

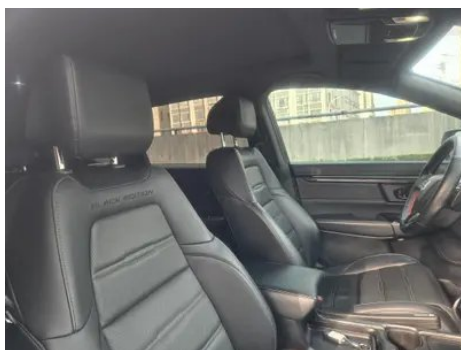
Vehicle Detail Report

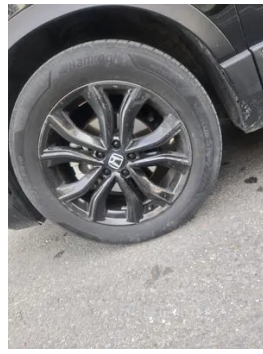
Honda CR-V 2021 240TURBO CVT Two-Drive Blackadder Edition

Basic Information

Brand	Honda
Mileage	80,000 km
Color	Black
First Registration	2020-10-01
Transfer Count	1

Vehicle Images





Vehicle Condition

1. Inner side of left C-pillar, Scratch. 2. Driver's seat rails and frame, Signs of removal. 3. Front passenger seat rails and frame, Signs of removal.

Configuration Information

Model Information

Model Name	Honda CR-V 2021 240TURBO CVT Two-Drive Blackadder Edition
Launch Date	2020.07

Basic parameters

Vehicle Class	Compact SUV
Energy Type	Gasoline
Maximum Power (kW)	142
Maximum Torque (N·m)	243
Transmission	CVT continuously variable transmission
Body Type	SUV
Engine	1.5T 193 horsepower L4
Dimensions (L×W×H) (mm)	4621*1855*1679

Basic parameters (continued)

Official 0-100 km/h Acceleration (s)	9.4
Top Speed (km/h)	190
Curb Weight (kg)	1582
Maximum Gross Weight (kg)	2030
NEDC Combined Fuel Consumption (L/100km)	6.8

engine

Engine Model	L15BL
Displacement (mL)	1498
Displacement (L)	1.5
Induction Type	Turbocharging
Cylinder Arrangement	L
Number of Cylinders	4
Valves per Cylinder	4
Compression Ratio	10.3
Valve Train	DOHC
Maximum Power (PS)	193
Max Power Speed (rpm)	5600
Max Torque Speed (rpm)	2000-5000
Maximum net power (kW)	142
Fuel Grade	92.
Fuel Delivery System	Direct injection
Cylinder Head Material	Aluminum alloy
Cylinder Block Material	Aluminum alloy
Engine layout	Horizontal
Engine-specific technologies	VTEC

Screen/System

Central control color screen	<ul style="list-style-type: none">• Touch LCD screen
Infotainment Screen Size	<ul style="list-style-type: none">• 7 inches
Bluetooth/In-car Phone	<ul style="list-style-type: none">•
Voice recognition control system	<ul style="list-style-type: none">• Telephone

Screen/System (continued)

In-vehicle intelligent system	•Honda Connect
--------------------------------------	----------------

Body

Length (mm)	4621
Width (mm)	1855
Height (mm)	1679
Wheelbase (mm)	2661
Front Track (mm)	1601
Rear Track (mm)	1607
Door Opening Type	swing door
Number of Doors	5
Number of Seats	5
Fuel Tank Capacity (L)	53
Trunk volume (L)	-
Drag Coefficient (Cd)	-
Approach Angle (°)	19
Departure Angle (°)	22
Minimum Turning Radius (m)	5.5

Gearbox

Abbreviation	CVT continuously variable transmission
Number of Gears	stepless speed change
Transmission Type	Continuously Variable Transmission (CVT)

Chassis steering

Drive Type	Front-engine, Front-wheel drive (FF)
Front Suspension Type	MacPherson independent suspension
Rear Suspension Type	Multi-link independent suspension
Power Steering Type	Electric power assistance
Vehicle structure	bearing type

Seat Configuration

Seat Material	• Leather
----------------------	-----------

Seat Configuration (continued)

Main seat adjustment	<ul style="list-style-type: none">• Front and rear adjustment;• Backrest adjustment;• Height adjustment (4-way);• Lumbar support (4-way)
Co-seat adjustment method	<ul style="list-style-type: none">• Front and rear adjustment;• Backrest adjustment
Electric adjustment of driver's seat and passenger seat	Main •/Deputy •
Front passenger seat rear adjustable buttons	-
Second row seat adjustment	<ul style="list-style-type: none">• Backrest adjustment
Rear seat folding	<ul style="list-style-type: none">• Proportional down
Front/rear center armrest	Front •/Rear •
Rear cup holder	<ul style="list-style-type: none">•

Active safety

Anti-lock Braking System (ABS)	<ul style="list-style-type: none">•
Electronic Brakeforce Distribution (EBD/CBC)	<ul style="list-style-type: none">•
Brake Assist System (EBA/BAS/BA)	<ul style="list-style-type: none">•
Traction Control System (ASR/TCS/TRC)	<ul style="list-style-type: none">•
Electronic Stability Control (ESC/ESP/DSC)	<ul style="list-style-type: none">•
Tire Pressure Monitoring System (TPMS)	<ul style="list-style-type: none">• Tire pressure alarm
Seat Belt Reminder	<ul style="list-style-type: none">• Front row
ISOFIX Child Seat Anchors	<ul style="list-style-type: none">•
Lane Departure Warning System (LDWS)	<ul style="list-style-type: none">•
Autonomous Emergency Braking (AEB)	<ul style="list-style-type: none">•
Driver Fatigue Detection	<ul style="list-style-type: none">•
Forward Collision Warning (FCW)	<ul style="list-style-type: none">•
Emergency Call System (eCall)	<ul style="list-style-type: none">•

Air conditioning/refrigerator

Air conditioning/refrigerator (continued)

Air conditioning temperature control method	• Automatic air conditioning
Rear Independent Climate Control	-
Rear seat air vents	•
Temperature zone control	•
Car air purifier	-
In-cabin PM2.5 Filter	-

Passive safety

Driver/passenger airbag	Main •/Deputy •
Front/rear side airbags	Front •/Rear-
Front/rear head airbags (curtain airbags)	Front •/Rear •

Wheel brake

Front Brake Type	Ventilation disc
Rear Brake Type	Disc
Parking brake type	Electronic Parking
Front Tire Size	235/55 R19
Rear Tire Size	235/55 R19
Spare Tire Size	Not full-size

Audio/Interior Lighting

Number of speakers	• 8 speakers
---------------------------	--------------

Driving functions

Navigation traffic information display	•
Lane assist	-
Lane Keeping Assist System	•
Cruise control system	• Full speed adaptive cruise
Satellite navigation system	•
Driving assistance level	•L2
Lane centering	•
Road traffic sign recognition	•
Driver assistance systems	•Honda SENSING

Driving functions (continued)

Parking Assist	-
-----------------------	---

Exterior lighting

Low beam light source	•LED
High beam light source	•LED
LED daytime running lights	•
Adaptive high and low beam	•
Automatic headlights	•
Front fog lights	•LED
Height-adjustable headlights	•
Headlight Delay Off	•

Exterior mirrors

Exterior mirror function	• Electric adjustment; • Electric folding; • Rearview mirror heating; • Automatic folding when locked
---------------------------------	---

Appearance/anti-theft

Rim material	• Aluminum alloy
Electronic engine immobilizer	•
Central locking system in the car	•
Key Type	• Remote key
Keyless start system	•
Keyless entry function	• Front row
Remote start function	•
Active closed grille	•

Skylight/Glass

Sunroof Type	• Openable panoramic sunroof
Front/rear electric windows	Front •/Rear •
One-touch window lifting function	• Driving position
Window anti-pinch function	•
Car makeup mirror	• Main driver's lamp; • co-pilot's lamp
Rear wiper	•

Skylight/Glass (continued)

Rear side privacy glass	•
-------------------------	---

Interior and exterior color

Exterior Color	color crystal black #000000 Jingyao White #EBECF1
----------------	---

Interior Color	Black:#000000
----------------	---------------

Steering wheel/interior mirror

Steering Wheel Material	• Leather
-------------------------	-----------

Steering wheel position adjustment	• Manual up and down front and rear adjustment
------------------------------------	--

Multi-function steering wheel	•
-------------------------------	---

Heated Steering Wheel	-
-----------------------	---

Steering wheel memory	-
-----------------------	---

Trip computer display screen	• Color
------------------------------	---------

Full LCD instrument panel	-
---------------------------	---

LCD instrument size	• 7 inches
---------------------	------------

Interior rearview mirror function	• Manual anti-glare
-----------------------------------	---------------------

Gear shifting	• Mechanical gear shift
---------------	-------------------------

Steering Wheel Shift Paddles	•
------------------------------	---

Intelligent configuration

Connected Car Services	•
------------------------	---

OTA Updates	-
-------------	---

4G/5G Network	•4G
---------------	-----

Active Noise Cancellation	•
---------------------------	---

Driving Control

Driving mode switch	• Movement; • Economy
---------------------	-----------------------

Automatic parking	•
-------------------	---

Hill start assist	•
-------------------	---

Variable steering ratio	•
-------------------------	---

Engine start-stop technology	•
------------------------------	---

Driving Hardware

Front/rear parking radar	Front-/Rear •
--------------------------	---------------

Driving Hardware (continued)

Driving Assistance Camera System	<ul style="list-style-type: none">• Reversing image;• Vehicle side blind area image
Front perception camera	<ul style="list-style-type: none">• Monocular
Number of cameras	<ul style="list-style-type: none">• 3
Number of ultrasonic radars	<ul style="list-style-type: none">• 4

In-car charging

Multimedia/charging port	<ul style="list-style-type: none">• USB
Number of USB/Type-C ports	<ul style="list-style-type: none">• 2 in the front row/2 in the back row
Mobile phone wireless charging function	<ul style="list-style-type: none">• Front row

"●" = Standard equipment

"-" = Not available

"○" = Optional equipment.

Note: These are Chinese market vehicles. Warranty coverage is not available outside of China.