

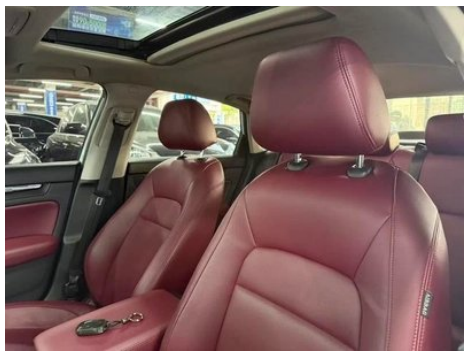
# Vehicle Detail Report

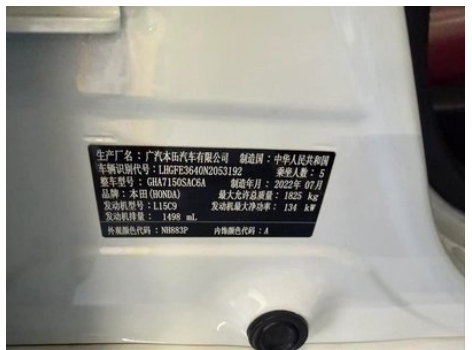
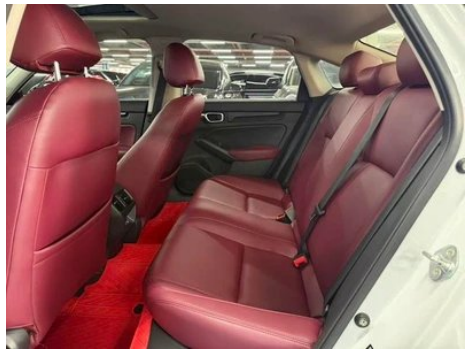
## Honda 2022 240TURBO CVT Premium Edition

### Basic Information

Brand	Honda
Mileage	86,000 km
Color	White
First Registration	2022-08-01
Transfer Count	1

### Vehicle Images





## Vehicle Condition

1. Right rear quarter panel, Body panel repair.

## Configuration Information

### Model Information

<b>Model Name</b>	Honda 2022 240TURBO CVT Premium Edition
-------------------	---

## Model Information (continued)

<b>Launch Date</b>	2021.12
--------------------	---------

### Basic parameters

<b>Vehicle Class</b>	compact car
<b>Energy Type</b>	Gasoline
<b>Maximum Power (kW)</b>	134
<b>Maximum Torque (N·m)</b>	240
<b>Transmission</b>	CVT continuously variable transmission
<b>Body Type</b>	Sedan
<b>Engine</b>	1.5T 182 horsepower L4
<b>Dimensions (L×W×H) (mm)</b>	4689*1802*1420
<b>Official 0-100 km/h Acceleration (s)</b>	-
<b>Top Speed (km/h)</b>	200
<b>Curb Weight (kg)</b>	1412
<b>Maximum Gross Weight (kg)</b>	1825
<b>WLTP Combined Fuel Consumption (L/100km)</b>	6.2
<b>Measured 0-100 km/h Acceleration (s)</b>	8.73
<b>Measured 100-0 km/h Braking Distance (m)</b>	38.15
<b>Real-world Fuel Consumption (L/100km)</b>	7

### engine

<b>Engine Model</b>	L15C9
<b>Displacement (mL)</b>	1498
<b>Displacement (L)</b>	1.5
<b>Induction Type</b>	Turbocharging
<b>Cylinder Arrangement</b>	L
<b>Number of Cylinders</b>	4
<b>Valves per Cylinder</b>	4
<b>Compression Ratio</b>	10.3
<b>Valve Train</b>	DOHC
<b>Maximum Power (PS)</b>	182

## engine (continued)

<b>Max Power Speed (rpm)</b>	6000
<b>Max Torque Speed (rpm)</b>	1700-4500
<b>Maximum net power (kW)</b>	134
<b>Fuel Grade</b>	92.
<b>Fuel Delivery System</b>	Direct injection
<b>Cylinder Head Material</b>	Aluminum alloy
<b>Cylinder Block Material</b>	Aluminum alloy
<b>Engine layout</b>	Horizontal
<b>Engine-specific technologies</b>	VTEC

## Screen/System

<b>Central control color screen</b>	<ul style="list-style-type: none"><li>• Touch LCD screen</li></ul>
<b>Infotainment Screen Size</b>	<ul style="list-style-type: none"><li>•9 inches</li></ul>
<b>Bluetooth/In-car Phone</b>	<ul style="list-style-type: none"><li>•</li></ul>
<b>Smartphone Integration/Mirroring</b>	<ul style="list-style-type: none"><li>• Baidu CarLife support</li></ul>
<b>Voice recognition control system</b>	<ul style="list-style-type: none"><li>• Multimedia system;</li><li>• Navigation;</li><li>• Telephone;</li><li>• Air conditioning</li></ul>
<b>In-vehicle intelligent system</b>	<ul style="list-style-type: none"><li>•Honda Connect</li></ul>

## Body

<b>Length (mm)</b>	4689
<b>Width (mm)</b>	1802
<b>Height (mm)</b>	1420
<b>Wheelbase (mm)</b>	2735
<b>Front Track (mm)</b>	1547
<b>Rear Track (mm)</b>	1575
<b>Door Opening Type</b>	swing door
<b>Number of Doors</b>	4
<b>Number of Seats</b>	5
<b>Fuel Tank Capacity (L)</b>	47
<b>Trunk volume (L)</b>	-
<b>Drag Coefficient (Cd)</b>	-
<b>Approach Angle (°)</b>	14
<b>Departure Angle (°)</b>	19

## Gearbox

<b>Abbreviation</b>	CVT continuously variable transmission
<b>Number of Gears</b>	stepless speed change
<b>Transmission Type</b>	Continuously Variable Transmission (CVT)

## Chassis steering

<b>Drive Type</b>	Front-engine, Front-wheel drive (FF)
<b>Front Suspension Type</b>	MacPherson independent suspension
<b>Rear Suspension Type</b>	Multi-link independent suspension
<b>Power Steering Type</b>	Electric power assistance
<b>Vehicle structure</b>	bearing type

## Seat Configuration

<b>Seat Material</b>	• Genuine leather; • Faux leather
<b>Main seat adjustment</b>	• Front and rear adjustment; • Backrest adjustment; • Height adjustment (4-way)
<b>Co-seat adjustment method</b>	• Front and rear adjustment; • Backrest adjustment
<b>Electric adjustment of driver's seat and passenger seat</b>	Main •/Deputy •
<b>Front passenger seat rear adjustable buttons</b>	-
<b>Rear seat folding</b>	• Proportional down
<b>Front/rear center armrest</b>	Front •/Rear •
<b>Rear cup holder</b>	•

## Active safety

<b>Anti-lock Braking System (ABS)</b>	•
<b>Electronic Brakeforce Distribution (EBD/CBC)</b>	•
<b>Brake Assist System (EBA/BAS/BA)</b>	•
<b>Traction Control System (ASR/TCS/TRC)</b>	•
<b>Electronic Stability Control (ESC/ESP/DSC)</b>	•
<b>Tire Pressure Monitoring System (TPMS)</b>	• Tire pressure alarm

## Active safety (continued)

<b>Seat Belt Reminder</b>	• Full vehicle
<b>ISOFIX Child Seat Anchors</b>	•
<b>Lane Departure Warning System (LDWS)</b>	•
<b>Autonomous Emergency Braking (AEB)</b>	•
<b>Driver Fatigue Detection</b>	•
<b>Forward Collision Warning (FCW)</b>	•
<b>Emergency Call System (eCall)</b>	•

## Air conditioning/refrigerator

<b>Air conditioning temperature control method</b>	• Automatic air conditioning
<b>Rear Independent Climate Control</b>	-
<b>Rear seat air vents</b>	•
<b>Temperature zone control</b>	•
<b>Car air purifier</b>	-
<b>In-cabin PM2.5 Filter</b>	•

## Passive safety

<b>Driver/passenger airbag</b>	Main •/Deputy •
<b>Front/rear side airbags</b>	Front •/Rear •
<b>Front/rear head airbags (curtain airbags)</b>	Front •/Rear •
<b>Knee airbag</b>	• Main driver's knee airbag; • Auxiliary driver's knee airbag
<b>Passive pedestrian protection</b>	•

## Wheel brake

<b>Front Brake Type</b>	Ventilation disc
<b>Rear Brake Type</b>	Disc
<b>Parking brake type</b>	Electronic Parking
<b>Front Tire Size</b>	225/45 R18
<b>Rear Tire Size</b>	225/45 R18
<b>Spare Tire Size</b>	Not full-size

## Audio/Interior Lighting

## Audio/Interior Lighting (continued)

<b>Speaker Brand Name</b>	•BOSE
<b>Number of speakers</b>	• 12 speakers
<b>Interior ambient lighting</b>	• Monochrome

## Driving functions

<b>Navigation traffic information display</b>	•
<b>Lane assist</b>	•
<b>Lane Keeping Assist System</b>	•
<b>Cruise control system</b>	• Full speed adaptive cruise
<b>Satellite navigation system</b>	•
<b>Driving assistance level</b>	•L2
<b>Rear Cross Traffic Alert</b>	•
<b>Lane centering</b>	•
<b>Road traffic sign recognition</b>	•
<b>Driver assistance systems</b>	•Honda SENSING
<b>Parking Assist</b>	-

## Exterior lighting

<b>Low beam light source</b>	•LED
<b>High beam light source</b>	•LED
<b>LED daytime running lights</b>	•
<b>Adaptive high and low beam</b>	•
<b>Automatic headlights</b>	•
<b>Height-adjustable headlights</b>	•
<b>Headlight Delay Off</b>	•
<b>Turn signal lamp</b>	•

## Exterior mirrors

<b>Exterior mirror function</b>	• Electric adjustment; • Electric folding; • Rearview mirror heating; • Automatic folding when locked
---------------------------------	---

## Appearance/anti-theft

<b>Rim material</b>	• Aluminum alloy
<b>Electric trunk</b>	-

## Appearance/anti-theft (continued)

<b>Electronic engine immobilizer</b>	<ul style="list-style-type: none"><li>•</li></ul>
<b>Central locking system in the car</b>	<ul style="list-style-type: none"><li>•</li></ul>
<b>Key Type</b>	<ul style="list-style-type: none"><li>• Remote key;</li><li>• Bluetooth key;</li><li>• NFC/RFID key</li></ul>
<b>Keyless start system</b>	<ul style="list-style-type: none"><li>•</li></ul>
<b>Keyless entry function</b>	<ul style="list-style-type: none"><li>• Front row</li></ul>
<b>Remote start function</b>	<ul style="list-style-type: none"><li>•</li></ul>

## Skylight/Glass

<b>Sunroof Type</b>	<ul style="list-style-type: none"><li>• Openable panoramic sunroof</li></ul>
<b>Front/rear electric windows</b>	Front •/Rear •
<b>One-touch window lifting function</b>	<ul style="list-style-type: none"><li>• Full vehicle</li></ul>
<b>Window anti-pinch function</b>	<ul style="list-style-type: none"><li>•</li></ul>
<b>Car makeup mirror</b>	<ul style="list-style-type: none"><li>• Main driving position;</li><li>• First officer</li></ul>
<b>Rear wiper</b>	-
<b>Rain sensor wiper function</b>	<ul style="list-style-type: none"><li>• Rainfall-sensing</li></ul>

## Interior and exterior color

<b>Exterior Color</b>	Blazing Yellow #F8C13E Greenland White #EDF2F8 Rose Black #0C0C21 Star Obsidian Red #8C050A Star Moon White #EFEFEE
<b>Interior Color</b>	Black Red #000000 #981414

## Steering wheel/interior mirror

<b>Steering Wheel Material</b>	<ul style="list-style-type: none"><li>• Leather</li></ul>
<b>Steering wheel position adjustment</b>	<ul style="list-style-type: none"><li>• Manual up and down front and rear adjustment</li></ul>
<b>Multi-function steering wheel</b>	<ul style="list-style-type: none"><li>•</li></ul>
<b>Heated Steering Wheel</b>	-
<b>Steering wheel memory</b>	-
<b>Trip computer display screen</b>	<ul style="list-style-type: none"><li>• Color</li></ul>
<b>Full LCD instrument panel</b>	<ul style="list-style-type: none"><li>•</li></ul>
<b>LCD instrument size</b>	<ul style="list-style-type: none"><li>• 10.2 inches</li></ul>

## Steering wheel/interior mirror (continued)

<b>Interior rearview mirror function</b>	<ul style="list-style-type: none"><li>• Automatic anti-glare</li></ul>
<b>Gear shifting</b>	<ul style="list-style-type: none"><li>• Mechanical gear shift</li></ul>
<b>ETC Device</b>	<ul style="list-style-type: none"><li>•</li></ul>

## Intelligent configuration

<b>Connected Car Services</b>	<ul style="list-style-type: none"><li>•</li></ul>
<b>OTA Updates</b>	<ul style="list-style-type: none"><li>•</li></ul>
<b>4G/5G Network</b>	<ul style="list-style-type: none"><li>•4G</li></ul>
<b>Mobile APP remote function</b>	<ul style="list-style-type: none"><li>• Door control Window control Vehicle start Lighting control Climate control Vehicle Condition Query Diagnosis Vehicle positioning Find car</li></ul>
<b>Wi-Fi hotspots</b>	<ul style="list-style-type: none"><li>•</li></ul>

## Driving Control

<b>Driving mode switch</b>	<ul style="list-style-type: none"><li>• Movement; • Economy</li></ul>
<b>Automatic parking</b>	<ul style="list-style-type: none"><li>•</li></ul>
<b>Hill start assist</b>	<ul style="list-style-type: none"><li>•</li></ul>
<b>Variable steering ratio</b>	<ul style="list-style-type: none"><li>•</li></ul>
<b>Engine start-stop technology</b>	<ul style="list-style-type: none"><li>•</li></ul>

## Driving Hardware

<b>Front/rear parking radar</b>	Front-/Rear •
<b>Driving Assistance Camera System</b>	<ul style="list-style-type: none"><li>• Reversing image</li></ul>

## In-car charging

<b>Multimedia/charging port</b>	<ul style="list-style-type: none"><li>•USB</li></ul>
<b>Number of USB/Type-C ports</b>	<ul style="list-style-type: none"><li>• 2 in the front row/2 in the back row</li></ul>
<b>Mobile phone wireless charging function</b>	<ul style="list-style-type: none"><li>• Front row</li></ul>

## Optional Package

<b>Optional Package</b>	Monochrome body color (2000 yuan Contains Star Moon White Greenland White Patek Philippe Brilliant Blue)
-------------------------	--

---

"●" = Standard equipment

"□" = Not available

"○" = Optional equipment.

Note: These are Chinese market vehicles. Warranty coverage is not available outside of China.