

Vehicle Detail Report

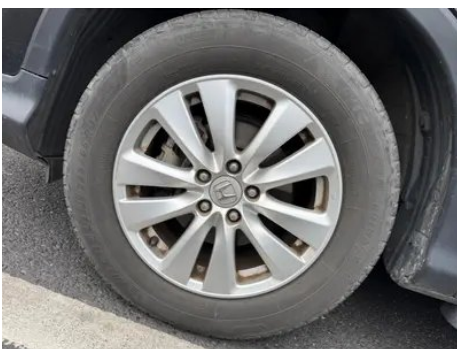
Honda CR-V 2015 2.0L Two-Drive Fashion Edition

Basic Information

Brand	Honda
Mileage	72,000 km
Color	Black
First Registration	2015-09-01
Transfer Count	1

Vehicle Images





Vehicle Condition

1. Left upper side rail, Paint repair. 2. Right upper side rail, Paint repair. 3. Left rear frame rail, Corrosion. 4. Right rocker panel, Outer-side deformation. 5. Inner side of left B-pillar, Scratch. 6. Inner side of left C-pillar, Scratch. 7. Inner side of right B-pillar, Scratch. 8. Inner side of right C-pillar, Scratch. 9. Driver's seat rails and frame, Signs of removal. 10. Front passenger seat rails and frame, Signs of removal. 11. Headliner, Water stains, Soiling. 12. Left rear quarter panel, Scratch. 13. Right rear quarter panel, Paint repair. 14. Headliner, Water stains, Soiling.

Configuration Information

Model Information

Model Name	Honda CR-V 2015 2.0L Two-Drive Fashion Edition
Launch Date	2015.04

Basic parameters

Vehicle Class	Compact SUV
Energy Type	Gasoline
Maximum Power (kW)	114
Maximum Torque (N·m)	190
Transmission	CVT continuously variable transmission
Body Type	SUV
Engine	2.0L 155 horsepower L4
Dimensions (L×W×H) (mm)	4585*1820*1685
Official 0-100 km/h Acceleration (s)	-
Top Speed (km/h)	-
Curb Weight (kg)	1540
Maximum Gross Weight (kg)	-
NEDC Combined Fuel Consumption (L/100km)	7.1

engine

Engine Model	R20A7
Displacement (mL)	1997
Displacement (L)	2.0
Induction Type	Natural aspiration
Cylinder Arrangement	L
Number of Cylinders	4
Valves per Cylinder	4
Compression Ratio	10.6
Valve Train	SOHC
Bore (mm)	81
Stroke (mm)	97
Maximum Power (PS)	155
Max Power Speed (rpm)	6500

engine (continued)

Max Torque Speed (rpm)	4300
Maximum net power (kW)	-
Fuel Grade	92.
Fuel Delivery System	Multi-point EFI
Cylinder Head Material	Aluminum alloy
Cylinder Block Material	Aluminum alloy
Engine-specific technologies	i-VTEC

Screen/System

Bluetooth/In-car Phone	-
In-car CD/DVD Player	<ul style="list-style-type: none">• Single disc CD

Body

Length (mm)	4585
Width (mm)	1820
Height (mm)	1685
Wheelbase (mm)	2620
Front Track (mm)	1580
Rear Track (mm)	1580
Ground Clearance (Fully Loaded) (mm)	137
Door Opening Type	-
Number of Doors	5
Number of Seats	5
Fuel Tank Capacity (L)	58
Trunk volume (L)	-
Drag Coefficient (Cd)	-

Gearbox

Abbreviation	CVT continuously variable transmission
Number of Gears	stepless speed change
Transmission Type	Continuously Variable Transmission (CVT)

Chassis steering

Drive Type	Front-engine, Front-wheel drive (FF)
Front Suspension Type	MacPherson independent suspension

Chassis steering (continued)

Rear Suspension Type	Double wishbone independent suspension
Power Steering Type	Electric power assistance
Vehicle structure	bearing type

Seat Configuration

Seat Material	<ul style="list-style-type: none">• Fabric
Main seat adjustment	<ul style="list-style-type: none">• Front and rear adjustment;• Backrest adjustment;• Height adjustment (2-way)
Co-seat adjustment method	<ul style="list-style-type: none">• Front and rear adjustment;• Backrest adjustment
Electric adjustment of driver's seat and passenger seat	-
Front passenger seat rear adjustable buttons	-
Second row seat adjustment	<ul style="list-style-type: none">• Backrest adjustment
Rear seat folding	<ul style="list-style-type: none">• Proportional down
Front/rear center armrest	Front •/Rear •
Rear cup holder	<ul style="list-style-type: none">•

Active safety

Anti-lock Braking System (ABS)	<ul style="list-style-type: none">•
Electronic Brakeforce Distribution (EBD/CBC)	<ul style="list-style-type: none">•
Brake Assist System (EBA/BAS/BA)	<ul style="list-style-type: none">•
Traction Control System (ASR/TCS/TRC)	<ul style="list-style-type: none">•
Electronic Stability Control (ESC/ESP/DSC)	<ul style="list-style-type: none">•
Tire Pressure Monitoring System (TPMS)	<ul style="list-style-type: none">•
Seat Belt Reminder	<ul style="list-style-type: none">•
ISOFIX Child Seat Anchors	<ul style="list-style-type: none">•
Lane Departure Warning System (LDWS)	-
Autonomous Emergency Braking (AEB)	-

Active safety (continued)

Driver Fatigue Detection	-
---------------------------------	---

Air conditioning/refrigerator

Air conditioning temperature control method	• Manual air conditioning
Rear Independent Climate Control	-
Rear seat air vents	•
Temperature zone control	-
Car air purifier	-
In-cabin PM2.5 Filter	-

Passive safety

Driver/passenger airbag	Main •/Deputy •
Front/rear side airbags	Front •/Rear-
Front/rear head airbags (curtain airbags)	Front •/Rear •

Wheel brake

Front Brake Type	Ventilation disc
Rear Brake Type	Disc
Parking brake type	Foot brake
Front Tire Size	225/65 R17
Rear Tire Size	225/65 R17
Spare Tire Size	Full size

Audio/Interior Lighting

Number of speakers	• 6-7 Horns
---------------------------	-------------

Driving functions

Navigation traffic information display	-
Lane assist	-
Lane Keeping Assist System	-
Satellite navigation system	-
Parking Assist	-

Exterior lighting

Low beam light source	• Halogen
High beam light source	• Halogen

Exterior lighting (continued)

LED daytime running lights	•
Adaptive high and low beam	-
Automatic headlights	-
Front fog lights	•
Height-adjustable headlights	•
Headlight Delay Off	-

Exterior mirrors

Exterior mirror function	• Electric adjustment; • Mirror heating
---------------------------------	---

Appearance/anti-theft

Rim material	• Aluminum alloy
Electronic engine immobilizer	•
Central locking system in the car	•
Key Type	• Remote key
Keyless start system	•
Keyless entry function	•

Skylight/Glass

Sunroof Type	• Electric sunroof
Front/rear electric windows	Front •/Rear •
One-touch window lifting function	• Driving position
Window anti-pinch function	•
Car makeup mirror	•
Rear wiper	•

Interior and exterior color

Exterior Color	Pearl White #F0F0F0 Crimson Red #B60202 Amber brown #4E433F color crystal black #000000 Silver snowflake #AAB2B2 Titanium Gold Silver #76757D
Interior Color	Black Beige #000000 #E0BF62 Black #000000

Steering wheel/interior mirror

Steering wheel/interior mirror (continued)

Steering wheel position adjustment	• Manual up and down front and rear adjustment
Multi-function steering wheel	•
Heated Steering Wheel	-
Steering wheel memory	-
Trip computer display screen	•
Full LCD instrument panel	-
Interior rearview mirror function	• Manual anti-glare

Intelligent configuration

Connected Car Services	-
OTA Updates	-

Driving Control

Automatic parking	-
Hill start assist	•
Engine start-stop technology	•

Driving Hardware

Front/rear parking radar	-
---------------------------------	---

In-car charging

Multimedia/charging port	•USB;•AUX
---------------------------------	-----------

"●" = Standard equipment

"_" = Not available

"○" = Optional equipment.

Note: These are Chinese market vehicles. Warranty coverage is not available outside of China.