

Vehicle Detail Report

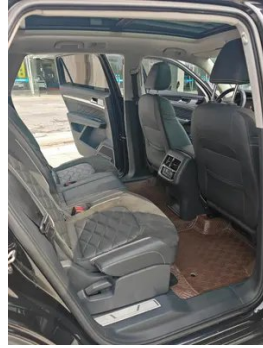
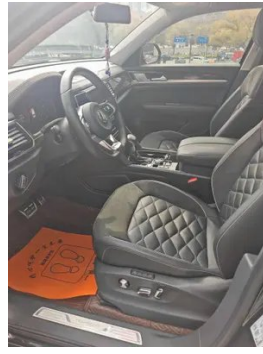
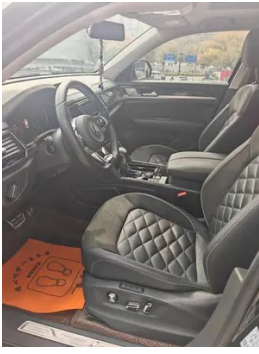
Volkswagen Teramont 2019 Teramont X 380TSI Four-wheel drive exalted deluxe edition

Basic Information

Brand	Volkswagen
Mileage	135,000 km
Color	Black
First Registration	2020-01-01
Transfer Count	1

Vehicle Images





Vehicle Condition

1. Driver's seat rails and frame, Signs of removal. 2. Front passenger seat rails and frame, Signs of removal.

Configuration Information

Model Information

Model Name	Volkswagen Touron 2019 Teramont X 380TSI Four-wheel drive exalted deluxe edition
Launch Date	2019.05

Basic parameters

Vehicle Class	Mid-size and large SUVs
Energy Type	Gasoline
Maximum Power (kW)	162

Basic parameters (continued)

Maximum Torque (N·m)	350
Transmission	7-speed wet dual-clutch
Body Type	SUV Crossover
Engine	2.0T 220 horsepower L4
Dimensions (L×W×H) (mm)	4905*1989*1719
Official 0-100 km/h Acceleration (s)	8.3
Top Speed (km/h)	200
Curb Weight (kg)	2010
Maximum Gross Weight (kg)	-
NEDC Combined Fuel Consumption (L/100km)	8.6

engine

Engine Model	EA888-DKX
Displacement (mL)	1984
Displacement (L)	2.0
Induction Type	Turbocharging
Cylinder Arrangement	L
Number of Cylinders	4
Valves per Cylinder	4
Valve Train	DOHC
Maximum Power (PS)	220
Max Power Speed (rpm)	4500-6200
Max Torque Speed (rpm)	1500-4400
Maximum net power (kW)	162
Fuel Grade	95.
Fuel Delivery System	Direct injection
Cylinder Head Material	Aluminum alloy
Cylinder Block Material	Cast iron
Engine layout	Horizontal

Screen/System

Central control color screen	<ul style="list-style-type: none">• Touch LCD screen
Infotainment Screen Size	<ul style="list-style-type: none">• 8 inches

Screen/System (continued)

Bluetooth/In-car Phone	<ul style="list-style-type: none">•
Smartphone Integration/Mirroring	<ul style="list-style-type: none">• Apple CarPlay support;• Baidu CarLife support;• OEM smartphone integration/mirroring
Voice recognition control system	<ul style="list-style-type: none">• Multimedia system;• Navigation;• Telephone

Body

Length (mm)	4905
Width (mm)	1989
Height (mm)	1719
Wheelbase (mm)	2980
Front Track (mm)	-
Rear Track (mm)	-
Door Opening Type	-
Number of Doors	5
Number of Seats	5
Fuel Tank Capacity (L)	70
Trunk volume (L)	509-1719
Drag Coefficient (Cd)	-

Gearbox

Abbreviation	7-speed wet dual-clutch
Number of Gears	7
Transmission Type	Wet Dual-Clutch Transmission (DCT)

Chassis steering

Drive Type	Front-engine, All-wheel drive (F-AWD)
Four-wheel drive	Timely four-wheel drive
Central differential structure	Multi-plate clutch
Front Suspension Type	MacPherson independent suspension
Rear Suspension Type	Multi-link independent suspension
Power Steering Type	Electric power assistance
Vehicle structure	bearing type

Seat Configuration

Seat Material	<ul style="list-style-type: none">• Genuine leather;• Faux leather
----------------------	---

Seat Configuration (continued)

Main seat adjustment	<ul style="list-style-type: none">• Front and rear adjustment;• Backrest adjustment;• Height adjustment (4-way);• Lumbar support (4-way)
Co-seat adjustment method	<ul style="list-style-type: none">• Front and rear adjustment;• Backrest adjustment;• Height adjustment (4-way);• Lumbar support (4-way)
Electric adjustment of driver's seat and passenger seat	Main •/Deputy •
Front seat functions	<ul style="list-style-type: none">• Heating
Electric seat memory function	<ul style="list-style-type: none">• Driving position
Front passenger seat rear adjustable buttons	-
Second row seat adjustment	<ul style="list-style-type: none">• Backrest adjustment
Rear seat folding	<ul style="list-style-type: none">• Proportional down
Front/rear center armrest	Front •/Rear •
Rear cup holder	<ul style="list-style-type: none">•
Second row seat functions	<ul style="list-style-type: none">• Heating

Active safety

Anti-lock Braking System (ABS)	<ul style="list-style-type: none">•
Electronic Brakeforce Distribution (EBD/CBC)	<ul style="list-style-type: none">•
Brake Assist System (EBA/BAS/BA)	<ul style="list-style-type: none">•
Traction Control System (ASR/TCS/TRC)	<ul style="list-style-type: none">•
Electronic Stability Control (ESC/ESP/DSC)	<ul style="list-style-type: none">•
Tire Pressure Monitoring System (TPMS)	<ul style="list-style-type: none">• Tire pressure display
Seat Belt Reminder	<ul style="list-style-type: none">• Full vehicle
ISOFIX Child Seat Anchors	<ul style="list-style-type: none">•
Lane Departure Warning System (LDWS)	-
Autonomous Emergency Braking (AEB)	-

Active safety (continued)

Driver Fatigue Detection	•
---------------------------------	---

Air conditioning/refrigerator

Air conditioning temperature control method	• Automatic air conditioning
Rear Independent Climate Control	•
Rear seat air vents	•
Temperature zone control	•
Car air purifier	-
In-cabin PM2.5 Filter	•

Passive safety

Driver/passenger airbag	Main •/Deputy •
Front/rear side airbags	Front •/Rear •
Front/rear head airbags (curtain airbags)	Front •/Rear •
Knee airbag	• Driver's knee airbag

Wheel brake

Front Brake Type	Ventilation disc
Rear Brake Type	Ventilation disc
Parking brake type	Electronic Parking
Front Tire Size	255/50 R20
Rear Tire Size	255/50 R20
Spare Tire Size	Not full-size

Audio/Interior Lighting

Number of speakers	• 8 speakers
Interior ambient lighting	• 10 colors

Driving functions

Navigation traffic information display	•
Lane assist	-
Lane Keeping Assist System	-
Cruise control system	• Cruise control
Satellite navigation system	•
Parking Assist	•

Exterior lighting

Low beam light source	•LED
High beam light source	•LED
LED daytime running lights	•
Adaptive high and low beam	-
Automatic headlights	•
Height-adjustable headlights	•
Headlight Delay Off	•
Turn signal lamp	•

Exterior mirrors

Exterior mirror function	• Electric adjustment; • Electric folding; • Rearview mirror memory; • Rearview mirror heating; • Automatic downturning when reversing; • Automatic folding when locked; • Automatic anti-glare
---------------------------------	---

Appearance/anti-theft

Rim material	• Aluminum alloy
Electric trunk	•
Electronic engine immobilizer	•
Central locking system in the car	•
Key Type	• Remote key
Keyless start system	•
Keyless entry function	• Full vehicle
Hands-free Trunk	•
Electric trunk position memory	•
Roof rack	•

Skylight/Glass

Sunroof Type	• Openable panoramic sunroof
Front/rear electric windows	Front •/Rear •
One-touch window lifting function	• Full vehicle
Window anti-pinch function	•

Skylight/Glass (continued)

Car makeup mirror	<ul style="list-style-type: none">• Main driver's lamp; • co-pilot's lamp
Rear wiper	<ul style="list-style-type: none">•
Rain sensor wiper function	<ul style="list-style-type: none">• Rainfall-sensing
Rear side privacy glass	<ul style="list-style-type: none">•
Side window multi-layer soundproof glass	<ul style="list-style-type: none">• Full vehicle

Interior and exterior color

Exterior Color	Icelandic Silver #9CABB2 thunder black #000000 Glacier White #EBEFF2 Flaming Orange #C83C28 carbon crystal ash #5A6E87 Xuanwu Black #000000 rock wall brown #563D1D
Interior Color	Titan Black:#000000; Natural Brown:#723D19

Steering wheel/interior mirror

Steering Wheel Material	<ul style="list-style-type: none">• Leather
Steering wheel position adjustment	<ul style="list-style-type: none">• Manual up and down front and rear adjustment
Multi-function steering wheel	<ul style="list-style-type: none">•
Heated Steering Wheel	-
Steering wheel memory	-
Trip computer display screen	<ul style="list-style-type: none">• Color
Full LCD instrument panel	<ul style="list-style-type: none">•
LCD instrument size	<ul style="list-style-type: none">• 10.2 inches
Interior rearview mirror function	<ul style="list-style-type: none">• Automatic anti-glare

Intelligent configuration

Connected Car Services	-
OTA Updates	-

Driving Control

Driving mode switch	<ul style="list-style-type: none">• Sport; • Economy; • Standard/Comfort; • Off-road; • Snow
Automatic parking	<ul style="list-style-type: none">•
Steep slope descent	<ul style="list-style-type: none">•
Hill start assist	<ul style="list-style-type: none">•

Driving Control (continued)

Variable suspension function	• Suspension damping adjustment
Engine start-stop technology	•

Driving Hardware

Front/rear parking radar	Front •/Rear •
Driving Assistance Camera System	• Reversing image

In-car charging

Multimedia/charging port	•USB
Number of USB/Type-C ports	• 3 in the front row/2 in the back row
Mobile phone wireless charging function	• Front row
Luggage compartment 12V power socket	•

"●" = Standard equipment

"-" = Not available

"○" = Optional equipment.

Note: These are Chinese market vehicles. Warranty coverage is not available outside of China.