

Vehicle Detail Report

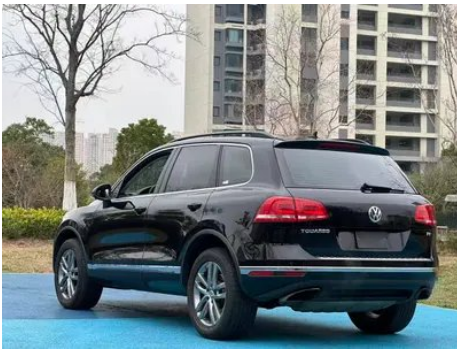
Volkswagen Touareg 2017 3.0TSI Boundary Extension Edition

Basic Information

Brand	Volkswagen
Mileage	200,000 km
Color	Black
First Registration	2017-12-01
Transfer Count	0

Vehicle Images





Vehicle Condition

1. Left rear quarter panel, Deformation. 2. Right rear quarter panel, Paint repair, Body panel repair.

Configuration Information

Model Information

Model Name	Volkswagen Touareg 2017 3.0TSI Boundary Extension Edition
Launch Date	2017.08

Basic parameters

Vehicle Class	Mid-size and large SUVs
Energy Type	Gasoline
Maximum Power (kW)	235
Maximum Torque (N·m)	440
Transmission	8-gear manual integration
Body Type	SUV
Engine	3.0T 320 horsepower V6
Dimensions (L×W×H) (mm)	4801*1940*1709
Official 0-100 km/h Acceleration (s)	7
Top Speed (km/h)	235
Curb Weight (kg)	2244
Maximum Gross Weight (kg)	-
NEDC Combined Fuel Consumption (L/100km)	10.2

engine

Engine Model	-
Displacement (mL)	2995
Displacement (L)	3.0
Induction Type	Mechanical Pressurization
Cylinder Arrangement	V

engine (continued)

Number of Cylinders	6
Valves per Cylinder	4
Valve Train	DOHC
Maximum Power (PS)	320
Max Power Speed (rpm)	5700-6500
Max Torque Speed (rpm)	2900-4700
Maximum net power (kW)	-
Fuel Grade	95.
Fuel Delivery System	Mixed injection
Cylinder Head Material	Aluminum alloy
Cylinder Block Material	Aluminum alloy

Screen/System

Central control color screen	<ul style="list-style-type: none">•
Infotainment Screen Size	<ul style="list-style-type: none">• 8 inches
Bluetooth/In-car Phone	-
Smartphone Integration/Mirroring	<ul style="list-style-type: none">•
In-car CD/DVD Player	<ul style="list-style-type: none">• Single DVD

Body

Length (mm)	4801
Width (mm)	1940
Height (mm)	1709
Wheelbase (mm)	2893
Front Track (mm)	-
Rear Track (mm)	-
Door Opening Type	-
Number of Doors	5
Number of Seats	5
Fuel Tank Capacity (L)	100
Trunk volume (L)	580-1642
Drag Coefficient (Cd)	-

Gearbox

Abbreviation	8-gear manual integration
Number of Gears	8

Gearbox (continued)

Transmission Type	Automatic Transmission with Manual Mode (AT)
--------------------------	--

Chassis steering

Drive Type	Front-engine, All-wheel drive (F-AWD)
Four-wheel drive	Full-time four-wheel drive
Central differential structure	Torson differential
Front Suspension Type	Double wishbone independent suspension
Rear Suspension Type	Double wishbone independent suspension
Power Steering Type	Electric power assistance
Vehicle structure	bearing type

Seat Configuration

Seat Material	<ul style="list-style-type: none">• Leather
Main seat adjustment	<ul style="list-style-type: none">• Front and rear adjustment;• Backrest adjustment;• Height adjustment (4-way);• Lumbar support (4-way)
Co-seat adjustment method	<ul style="list-style-type: none">• Front and rear adjustment;• Backrest adjustment;• Height adjustment (4-way);• Lumbar support (4-way)
Electric adjustment of driver's seat and passenger seat	Main •/Deputy •
Front seat functions	<ul style="list-style-type: none">• Heating;• Ventilation
Front passenger seat rear adjustable buttons	-
Second row seat adjustment	<ul style="list-style-type: none">• Front and rear adjustment;• Backrest adjustment
Rear seat folding	<ul style="list-style-type: none">• Proportional down
Front/rear center armrest	Front •/Rear •
Rear cup holder	<ul style="list-style-type: none">•

Active safety

Anti-lock Braking System (ABS)	<ul style="list-style-type: none">•
Electronic Brakeforce Distribution (EBD/CBC)	<ul style="list-style-type: none">•

Active safety (continued)

Brake Assist System (EBA/BAS/BA)	•
Traction Control System (ASR/TCS/TRC)	•
Electronic Stability Control (ESC/ESP/DSC)	•
Tire Pressure Monitoring System (TPMS)	•
Seat Belt Reminder	•
ISOFIX Child Seat Anchors	•
Lane Departure Warning System (LDWS)	-
Autonomous Emergency Braking (AEB)	-
Driver Fatigue Detection	-

Air conditioning/refrigerator

Air conditioning temperature control method	• Automatic air conditioning
Rear Independent Climate Control	-
Rear seat air vents	•
Temperature zone control	•
Car air purifier	-
In-cabin PM2.5 Filter	-

Passive safety

Driver/passenger airbag	Main •/Deputy •
Front/rear side airbags	Front •/Rear-
Front/rear head airbags (curtain airbags)	Front •/Rear •
Knee airbag	• Driver's knee airbag

Wheel brake

Front Brake Type	Ventilation disc
Rear Brake Type	Ventilation disc
Parking brake type	Electronic Parking
Front Tire Size	265/50 R19
Rear Tire Size	265/50 R19
Spare Tire Size	Not full-size

Audio/Interior Lighting

Number of speakers	<ul style="list-style-type: none">• 8-9 speakers
---------------------------	--

Driving functions

Navigation traffic information display	-
Lane assist	-
Lane Keeping Assist System	-
Cruise control system	<ul style="list-style-type: none">• Cruise control
Satellite navigation system	<ul style="list-style-type: none">•
Parking Assist	-

Exterior lighting

Low beam light source	<ul style="list-style-type: none">• Xenon
High beam light source	<ul style="list-style-type: none">• Xenon
LED daytime running lights	<ul style="list-style-type: none">•
Adaptive high and low beam	-
Automatic headlights	<ul style="list-style-type: none">•
Front fog lights	<ul style="list-style-type: none">•
Height-adjustable headlights	<ul style="list-style-type: none">•
Headlight Delay Off	-
Turn headlights	<ul style="list-style-type: none">•
Headlight cleaning device	<ul style="list-style-type: none">•

Exterior mirrors

Exterior mirror function	<ul style="list-style-type: none">• Electric adjustment;• Electric folding;• Heated mirrors;• Auto-dimming
---------------------------------	---

Appearance/anti-theft

Rim material	<ul style="list-style-type: none">• Aluminum alloy
Electric trunk	<ul style="list-style-type: none">•
Electronic engine immobilizer	<ul style="list-style-type: none">•
Central locking system in the car	<ul style="list-style-type: none">•
Key Type	<ul style="list-style-type: none">• Remote key
Keyless start system	<ul style="list-style-type: none">•

Appearance/anti-theft (continued)

Keyless entry function	•
Roof rack	•

Skylight/Glass

Sunroof Type	• Panoramic sunroof
Front/rear electric windows	Front •/Rear •
One-touch window lifting function	• Full vehicle
Window anti-pinch function	•
Car makeup mirror	•
Rear wiper	•
Rain sensor wiper function	•

Interior and exterior color

Exterior Color	reef blue #0662AA Mist White #98A7BC goose egg white #FAFAFA Piano Black #000000 Haiya Grey #3E4B51 Bright Night Blue #083560 Desert Brown #64564B Silver Armor #D4CDBB Flowing Light Silver #B2B5B7 Beach Gold #DCD4C1 Ink black #000000 Canyon Grey #606463
Interior Color	Titanium Tungsten Black #1E1D23 rich ore brown #533732 Oak Brown #2F2B27 Gardenia yellow #BAA590

Steering wheel/interior mirror

Steering Wheel Material	• Cortex
Steering wheel position adjustment	• Manual up and down front and rear adjustment
Multi-function steering wheel	•
Heated Steering Wheel	-
Steering wheel memory	-
Trip computer display screen	•
Full LCD instrument panel	-
Interior rearview mirror function	• Automatic anti-glare

Intelligent configuration

Intelligent configuration (continued)

Connected Car Services	-
OTA Updates	-

Driving Control

Automatic parking	•
Steep slope descent	•
Hill start assist	•
Variable suspension function	• Suspension damping adjustment; • Suspension height adjustment
Air Suspension	•
Engine start-stop technology	•

Driving Hardware

Front/rear parking radar	Front •/Rear •
---------------------------------	----------------

In-car charging

Multimedia/charging port	•USB;•AUX;•SD
---------------------------------	---------------

"●" = Standard equipment

"-" = Not available

"○" = Optional equipment.

Note: These are Chinese market vehicles. Warranty coverage is not available outside of China.