

Vehicle Detail Report

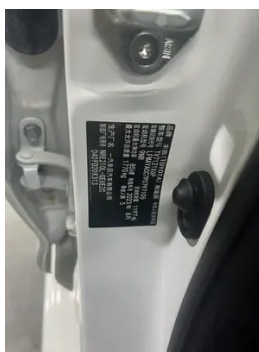
Toyota Corolla 2023 1.2T S-CVT Elite Edition

Basic Information

| | |
|--------------------|------------|
| Brand | Toyota |
| Mileage | 11,000 km |
| Color | White |
| First Registration | 2024-01-01 |
| Transfer Count | 0 |

Vehicle Images





Vehicle Condition

1. Original metal body panels with factory paint.

Configuration Information

Model Information

| | |
|--------------------|--|
| Model Name | Toyota Corolla 2023 1.2T Elite Edition |
| Launch Date | 2023.05 |

Basic parameters

| | |
|---|---|
| Vehicle Class | compact car |
| Energy Type | Gasoline |
| Maximum Power (kW) | 85 |
| Maximum Torque (N·m) | 185 |
| Transmission | CVT continuously variable (simulating 10 gears) |
| Body Type | Sedan |
| Engine | 1.2T 116 horsepower L4 |
| Dimensions (L×W×H) (mm) | 4635*1780*1455 |
| Official 0-100 km/h Acceleration (s) | - |
| Top Speed (km/h) | 180 |
| Curb Weight (kg) | 1340 |
| Maximum Gross Weight (kg) | 1770 |
| WLTP Combined Fuel Consumption (L/100km) | 5.88 |

engine

| | |
|-----------------------------|---------------|
| Engine Model | 9NR/8NR |
| Displacement (mL) | 1197 |
| Displacement (L) | 1.2 |
| Induction Type | Turbocharging |
| Cylinder Arrangement | L |

engine (continued)

| | |
|-------------------------------------|------------------|
| Number of Cylinders | 4 |
| Valves per Cylinder | 4 |
| Compression Ratio | 10 |
| Valve Train | DOHC |
| Bore (mm) | 71.5 |
| Stroke (mm) | 74.5 |
| Maximum Power (PS) | 116 |
| Max Power Speed (rpm) | 5200-5600 |
| Max Torque Speed (rpm) | 1500-4000 |
| Maximum net power (kW) | 85 |
| Fuel Grade | 92. |
| Fuel Delivery System | Direct injection |
| Cylinder Head Material | Aluminum alloy |
| Cylinder Block Material | Aluminum alloy |
| Engine layout | Horizontal |
| Engine-specific technologies | VVT-iW |

Screen/System

| | |
|---|--|
| Central control color screen | <ul style="list-style-type: none">• Touch LCD screen |
| Infotainment Screen Size | <ul style="list-style-type: none">•9 inches |
| Bluetooth/In-car Phone | <ul style="list-style-type: none">• |
| Voice recognition control system | <ul style="list-style-type: none">• Multimedia system;• Navigation;• Telephone;• Air conditioning;• Sunroof;• Windows |

Body

| | |
|--------------------------|------------|
| Length (mm) | 4635 |
| Width (mm) | 1780 |
| Height (mm) | 1455 |
| Wheelbase (mm) | 2700 |
| Front Track (mm) | 1527 |
| Rear Track (mm) | 1526 |
| Door Opening Type | swing door |
| Number of Doors | 4 |
| Number of Seats | 5 |

Body (continued)

| | |
|-----------------------------------|-----|
| Fuel Tank Capacity (L) | 50 |
| Trunk volume (L) | - |
| Drag Coefficient (Cd) | - |
| Approach Angle (°) | 12 |
| Departure Angle (°) | 16 |
| Minimum Turning Radius (m) | 5.2 |

Gearbox

| | |
|--------------------------|---|
| Abbreviation | CVT continuously variable (simulating 10 gears) |
| Number of Gears | 10 |
| Transmission Type | Continuously Variable Transmission (CVT) |

Chassis steering

| | |
|------------------------------|--|
| Drive Type | Front-engine, Front-wheel drive (FF) |
| Front Suspension Type | MacPherson independent suspension |
| Rear Suspension Type | E-type multi-link independent suspension |
| Power Steering Type | Electric power assistance |
| Vehicle structure | bearing type |

Seat Configuration

| | |
|--|---|
| Seat Material | • Fabric |
| Main seat adjustment | • Front and rear adjustment; • Backrest adjustment; • Height adjustment (2-way) |
| Co-seat adjustment method | • Front and rear adjustment; • Backrest adjustment |
| Electric adjustment of driver's seat and passenger seat | - |
| Front passenger seat rear adjustable buttons | - |
| Front/rear center armrest | Front •/Rear- |
| Rear cup holder | - |

Active safety

| | |
|---------------------------------------|---|
| Anti-lock Braking System (ABS) | • |
|---------------------------------------|---|

Active safety (continued)

| | |
|---|-------------------------|
| Electronic Brakeforce Distribution (EBD/CBC) | • |
| Brake Assist System (EBA/BAS/BA) | • |
| Traction Control System (ASR/TCS/TRC) | • |
| Electronic Stability Control (ESC/ESP/DSC) | • |
| Tire Pressure Monitoring System (TPMS) | • Tire pressure display |
| Seat Belt Reminder | • Full car |
| ISOFIX Child Seat Anchors | • |
| Lane Departure Warning System (LDWS) | • |
| Autonomous Emergency Braking (AEB) | • |
| Driver Fatigue Detection | - |
| Forward Collision Warning (FCW) | • |
| Emergency Call System (eCall) | • |

Air conditioning/refrigerator

| | |
|--|---------------------------|
| Air conditioning temperature control method | • Manual air conditioning |
| Rear Independent Climate Control | - |
| Rear seat air vents | - |
| Temperature zone control | - |
| Car air purifier | - |
| In-cabin PM2.5 Filter | • |

Passive safety

| | |
|--|---------------------------|
| Driver/passenger airbag | Main •/Deputy • |
| Front/rear side airbags | Front •/Rear- |
| Front/rear head airbags (curtain airbags) | Front •/Rear • |
| Knee airbag | • Main driver knee airbag |
| Passenger seat cushion airbag | • |

Wheel brake

Wheel brake (continued)

| | |
|-----------------------------|--------------------|
| Front Brake Type | Ventilation disc |
| Rear Brake Type | Disc |
| Parking brake type | Electronic Parking |
| Front Tire Size | 205/55 R16 |
| Rear Tire Size | 205/55 R16 |
| Spare Tire Size | Not full-size |
| Spare tire placement | In the trunk |

Audio/Interior Lighting

| | |
|---------------------------|--------------|
| Number of speakers | • 6 speakers |
|---------------------------|--------------|

Driving functions

| | |
|---|------------------------------|
| Navigation traffic information display | • |
| Lane assist | - |
| Lane Keeping Assist System | • |
| Cruise control system | • Full speed adaptive cruise |
| Satellite navigation system | • |
| Driving assistance level | •L2 |
| Lane centering | • |
| Driver assistance systems | •Toyota Safety Sense |
| Parking Assist | - |

Exterior lighting

| | |
|-------------------------------------|------|
| Low beam light source | •LED |
| High beam light source | •LED |
| LED daytime running lights | • |
| Adaptive high and low beam | • |
| Automatic headlights | • |
| Front fog lights | •LED |
| Height-adjustable headlights | • |
| Headlight Delay Off | - |

Exterior mirrors

| | |
|---------------------------------|---|
| Exterior mirror function | • Electric adjustment; • Mirror heating |
|---------------------------------|---|

Appearance/anti-theft

| | |
|--|------------------|
| Rim material | • Aluminum alloy |
| Electric trunk | - |
| Electronic engine immobilizer | • |
| Central locking system in the car | • |
| Key Type | • Remote key |
| Keyless start system | • |

Skylight/Glass

| | |
|--|--|
| Sunroof Type | • Electric sunroof |
| Front/rear electric windows | Front •/Rear • |
| One-touch window lifting function | • Full car |
| Window anti-pinch function | • |
| Car makeup mirror | • Main driving position; • First officer |
| Rear wiper | - |

Interior and exterior color

| | |
|-----------------------|--|
| Exterior Color | Super White:#FDFDFD; Platinum Bronze Metallic:#8D857F; Red Mica Metallic:#C4283E; Platinum White:#E5E5E5; Biotite:#000000; Charming Silver:#B8B6C4; Celestite Metallic:#48525E |
| Interior Color | Black:#3E4146 |

Steering wheel/interior mirror

| | |
|---|--|
| Steering Wheel Material | • Plastic |
| Steering wheel position adjustment | • Manual up and down front and rear adjustment |
| Multi-function steering wheel | • |
| Heated Steering Wheel | - |
| Steering wheel memory | - |
| Trip computer display screen | • Color |
| Full LCD instrument panel | - |
| LCD instrument size | • 4.2 inches |

Steering wheel/interior mirror (continued)

| | |
|--|-------------------------|
| Interior rearview mirror function | • Manual anti-glare |
| Gear shifting | • Mechanical gear shift |

Intelligent configuration

| | |
|-----------------------------------|---|
| Connected Car Services | • |
| OTA Updates | • |
| 4G/5G Network | •4G |
| Mobile APP remote function | • Air conditioning control; • Vehicle condition inquiry/diagnosis; • Vehicle location/car search; • Owner service (find charging piles, gas stations, parking lots, etc.); • Appointment maintenance/repair |

Driving Control

| | |
|-------------------------------------|------------|
| Driving mode switch | • Movement |
| Automatic parking | • |
| Hill start assist | • |
| Engine start-stop technology | • |

Driving Hardware

| | |
|---|-------------------|
| Front/rear parking radar | - |
| Driving Assistance Camera System | • Reversing image |

In-car charging

| | |
|-----------------------------------|----------------------|
| Multimedia/charging port | •USB |
| Number of USB/Type-C ports | • 1 in the front row |

"●" = Standard equipment

"-" = Not available

"○" = Optional equipment.

Note: These are Chinese market vehicles. Warranty coverage is not available outside of China.