

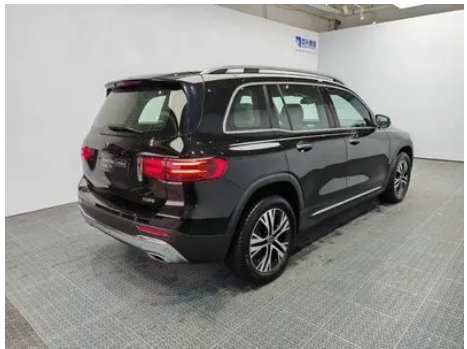
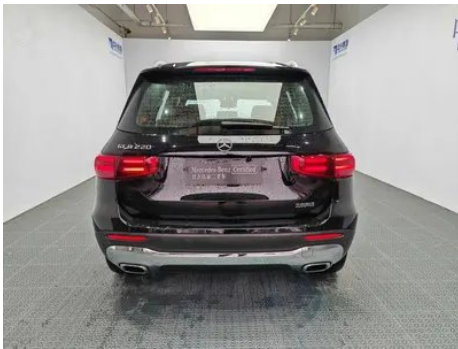
# Vehicle Detail Report

## Mercedes-Benz GLB 2025 GLB 220 Dynamic

### Basic Information

Brand	Mercedes-Benz
Mileage	16,300 km
Color	Black
First Registration	2025-04-01
Transfer Count	0

### Vehicle Images







## Vehicle Condition

1. Front bumper, Paint repair, Signs of removal. 2. Rear bumper, Paint chip, Scratch damage, Damage. 3. Left headlight, Signs of removal. 4. Right headlight, Signs of removal.

## Configuration Information

### Model Information

<b>Model Name</b>	Mercedes-Benz GLB 2025 GLB 220 Dynamic
<b>Launch Date</b>	2025.04

### Basic parameters

<b>Vehicle Class</b>	Compact SUV
<b>Energy Type</b>	Gasoline + 48V Mild Hybrid System
<b>Maximum Power (kW)</b>	140
<b>Maximum Torque (N·m)</b>	300
<b>Transmission</b>	8-speed wet dual-clutch
<b>Body Type</b>	SUV
<b>Engine</b>	2.0L 190 hp L4
<b>Dimensions (L×W×H) (mm)</b>	4638*1834*1696
<b>Official 0-100 km/h Acceleration (s)</b>	8.8
<b>Top Speed (km/h)</b>	210
<b>Curb Weight (kg)</b>	1704
<b>Maximum Gross Weight (kg)</b>	2145
<b>WLTP Combined Fuel Consumption (L/100km)</b>	6.94

### engine

<b>Engine Model</b>	260 920
<b>Displacement (mL)</b>	1991
<b>Displacement (L)</b>	2.0
<b>Induction Type</b>	Turbocharging

## engine (continued)

<b>Cylinder Arrangement</b>	L
<b>Number of Cylinders</b>	4
<b>Valves per Cylinder</b>	4
<b>Valve Train</b>	DOHC
<b>Maximum Power (PS)</b>	190
<b>Max Power Speed (rpm)</b>	6100
<b>Max Torque Speed (rpm)</b>	1800-4000
<b>Maximum net power (kW)</b>	140
<b>Fuel Grade</b>	95.
<b>Fuel Delivery System</b>	Direct injection
<b>Cylinder Head Material</b>	Aluminum alloy
<b>Cylinder Block Material</b>	Aluminum alloy
<b>Engine layout</b>	Horizontal

## Screen/System

<b>Central control color screen</b>	<ul style="list-style-type: none"><li>• Touch LCD screen</li></ul>
<b>Infotainment Screen Size</b>	<ul style="list-style-type: none"><li>• 10.25 inches</li></ul>
<b>Bluetooth/In-car Phone</b>	<ul style="list-style-type: none"><li>•</li></ul>
<b>Smartphone Integration/ Mirroring</b>	<ul style="list-style-type: none"><li>• Apple CarPlay support;</li><li>• Android Auto support</li></ul>
<b>Voice recognition control system</b>	<ul style="list-style-type: none"><li>• Multimedia system;</li><li>• Navigation;</li><li>• Telephone;</li><li>• Air conditioning</li></ul>
<b>In-vehicle intelligent system</b>	<ul style="list-style-type: none"><li>•MBUX</li></ul>
<b>Voice assistant wake-up word</b>	<ul style="list-style-type: none"><li>• Hello, Mercedes</li></ul>
<b>Continuous speech recognition</b>	<ul style="list-style-type: none"><li>•</li></ul>

## Body

<b>Length (mm)</b>	4638
<b>Width (mm)</b>	1834
<b>Height (mm)</b>	1696
<b>Wheelbase (mm)</b>	2829
<b>Front Track (mm)</b>	1590
<b>Rear Track (mm)</b>	1592
<b>Door Opening Type</b>	swing door

## Body (continued)

<b>Number of Doors</b>	5
<b>Number of Seats</b>	5
<b>Fuel Tank Capacity (L)</b>	52
<b>Trunk volume (L)</b>	703-1430
<b>Drag Coefficient (Cd)</b>	-
<b>Approach Angle (°)</b>	19
<b>Departure Angle (°)</b>	24

## Gearbox

<b>Abbreviation</b>	8-speed wet dual-clutch
<b>Number of Gears</b>	8
<b>Transmission Type</b>	Wet Dual-Clutch Transmission (DCT)

## Chassis steering

<b>Drive Type</b>	Front-engine, Front-wheel drive (FF)
<b>Front Suspension Type</b>	MacPherson independent suspension
<b>Rear Suspension Type</b>	Multi-link independent suspension
<b>Power Steering Type</b>	Electric power assistance
<b>Vehicle structure</b>	bearing type

## Seat Configuration

<b>Seat Material</b>	<ul style="list-style-type: none"><li>• Imitation leather</li></ul>
<b>Main seat adjustment</b>	<ul style="list-style-type: none"><li>• Front and rear adjustment;</li><li>• Backrest adjustment;</li><li>• Height adjustment (4-way);</li><li>• Leg rest adjustment;</li><li>• Lumbar support (4-way)</li></ul>
<b>Co-seat adjustment method</b>	<ul style="list-style-type: none"><li>• Front and rear adjustment;</li><li>• Backrest adjustment;</li><li>• Height adjustment (4-way);</li><li>○ Leg rest adjustment</li></ul>
<b>Electric adjustment of driver's seat and passenger seat</b>	Electric adjustment of main/auxiliary co-pilot position (USD 426)
<b>Front seat functions</b>	○ Heating (USD 382)
<b>Front passenger seat rear adjustable buttons</b>	-
<b>Second row seat adjustment</b>	<ul style="list-style-type: none"><li>• Backrest adjustment</li></ul>
<b>Rear seat folding</b>	<ul style="list-style-type: none"><li>• Proportional down</li></ul>
<b>Front/rear center armrest</b>	Front •/Rear •

## Seat Configuration (continued)

Rear cup holder	•
-----------------	---

## Active safety

Anti-lock Braking System (ABS)	•
Electronic Brakeforce Distribution (EBD/CBC)	•
Brake Assist System (EBA/BAS/BA)	•
Traction Control System (ASR/TCS/TRC)	•
Electronic Stability Control (ESC/ESP/DSC)	•
Tire Pressure Monitoring System (TPMS)	• Tire pressure display
Seat Belt Reminder	• Front row; • Second row
ISOFIX Child Seat Anchors	•
Lane Departure Warning System (LDWS)	•
Autonomous Emergency Braking (AEB)	•
Driver Fatigue Detection	•
Forward Collision Warning (FCW)	•
Emergency Call System (eCall)	•
Door Opening Warning (DOW)	•

## Air conditioning/refrigerator

Air conditioning temperature control method	• Automatic air conditioning
Rear Independent Climate Control	-
Rear seat air vents	•
Temperature zone control	-
Car air purifier	-
In-cabin PM2.5 Filter	-

## Passive safety

Driver/passenger airbag	Main •/Deputy •
Front/rear side airbags	Front •/Rear-

## Passive safety (continued)

<b>Front/rear head airbags (curtain airbags)</b>	Front •/Rear •
--------------------------------------------------	----------------

## Wheel brake

<b>Front Brake Type</b>	Ventilation disc
<b>Rear Brake Type</b>	Disc
<b>Parking brake type</b>	Electronic Parking
<b>Front Tire Size</b>	235/55 R18
<b>Rear Tire Size</b>	235/55 R18
<b>Spare Tire Size</b>	None

## Audio/Interior Lighting

<b>Speaker Brand Name</b>	○ Voice of Burmester Berlin (USD 1,206)
<b>Number of speakers</b>	• 7 horn; ○ 12 horn
<b>Interior ambient lighting</b>	• 64 colors

## Driving functions

<b>Navigation traffic information display</b>	•
<b>Lane assist</b>	•
<b>Lane Keeping Assist System</b>	•
<b>Cruise control system</b>	• Full speed adaptive cruise
<b>Satellite navigation system</b>	•
<b>Driving assistance level</b>	•L2
<b>Lane centering</b>	•
<b>Road traffic sign recognition</b>	•
<b>Map Brand</b>	• Gaud
<b>Parking Assist</b>	•

## Exterior lighting

<b>Low beam light source</b>	•LED
<b>High beam light source</b>	•LED
<b>LED daytime running lights</b>	•
<b>Adaptive high and low beam</b>	•
<b>Automatic headlights</b>	•

## Exterior lighting (continued)

<b>Height-adjustable headlights</b>	<ul style="list-style-type: none"><li>•</li></ul>
<b>Headlight Delay Off</b>	<ul style="list-style-type: none"><li>•</li></ul>

## Exterior mirrors

<b>Exterior mirror function</b>	<ul style="list-style-type: none"><li>•Electric adjustment;</li><li>•Electric folding;</li><li>•Rearview mirror heating;</li><li>•Automatically turn down when reversing;</li><li>•Automatically fold when locking the car</li></ul>
---------------------------------	--------------------------------------------------------------------------------------------------------------------------------------------------------------------------------------------------------------------------------------

## Appearance/anti-theft

<b>Rim material</b>	<ul style="list-style-type: none"><li>• Aluminum alloy</li></ul>
<b>Electric trunk</b>	<ul style="list-style-type: none"><li>•</li></ul>
<b>Electronic engine immobilizer</b>	<ul style="list-style-type: none"><li>•</li></ul>
<b>Central locking system in the car</b>	<ul style="list-style-type: none"><li>•</li></ul>
<b>Key Type</b>	<ul style="list-style-type: none"><li>• Remote key</li></ul>
<b>Keyless start system</b>	<ul style="list-style-type: none"><li>•</li></ul>
<b>Keyless entry function</b>	<input type="radio"/> Full vehicle (USD 574)
<b>Hands-free Trunk</b>	<input type="radio"/>
<b>Electric trunk position memory</b>	<ul style="list-style-type: none"><li>•</li></ul>
<b>Roof rack</b>	<ul style="list-style-type: none"><li>•</li></ul>

## Skylight/Glass

<b>Sunroof Type</b>	<ul style="list-style-type: none"><li>• Sectional electric sunroof</li></ul>
<b>Front/rear electric windows</b>	Front <input type="checkbox"/> /Rear <input type="checkbox"/>
<b>One-touch window lifting function</b>	<ul style="list-style-type: none"><li>• Full vehicle</li></ul>
<b>Window anti-pinch function</b>	<ul style="list-style-type: none"><li>•</li></ul>
<b>Car makeup mirror</b>	<ul style="list-style-type: none"><li>• Main driver's lamp;</li><li>• co-pilot's lamp</li></ul>
<b>Rear wiper</b>	<ul style="list-style-type: none"><li>•</li></ul>
<b>Rain sensor wiper function</b>	<ul style="list-style-type: none"><li>• Rainfall-sensing</li></ul>

## Interior and exterior color

## Interior and exterior color (continued)

<b>Exterior Color</b>	Arctic White #F4F4F4 obsidian black #000000 Spacetime Silver #ACACAE mountain gray #2F302A sea night blue #143882 Lava Red #B52E39 Matte Mountain Grey #424242
<b>Interior Color</b>	Black/Cocoa Brown: #000000/#844B41; Black: #000000

## Steering wheel/interior mirror

<b>Steering Wheel Material</b>	<ul style="list-style-type: none"><li>• Leather</li></ul>
<b>Steering wheel position adjustment</b>	<ul style="list-style-type: none"><li>• Manual up and down front and rear adjustment</li></ul>
<b>Multi-function steering wheel</b>	<ul style="list-style-type: none"><li>•</li></ul>
<b>Heated Steering Wheel</b>	-
<b>Steering wheel memory</b>	-
<b>Trip computer display screen</b>	<ul style="list-style-type: none"><li>• Color</li></ul>
<b>Full LCD instrument panel</b>	<ul style="list-style-type: none"><li>•</li></ul>
<b>LCD instrument size</b>	<ul style="list-style-type: none"><li>• 10.25 inches</li></ul>
<b>Interior rearview mirror function</b>	<ul style="list-style-type: none"><li>• Manual anti-glare</li></ul>
<b>Gear shifting</b>	<ul style="list-style-type: none"><li>• Electronic gear shift</li></ul>
<b>ETC Device</b>	○(USD 441)
<b>Steering Wheel Shift Paddles</b>	<ul style="list-style-type: none"><li>•</li></ul>

## Intelligent configuration

<b>Connected Car Services</b>	<ul style="list-style-type: none"><li>•</li></ul>
<b>OTA Updates</b>	<ul style="list-style-type: none"><li>•</li></ul>
<b>4G/5G Network</b>	<ul style="list-style-type: none"><li>•4G</li></ul>
<b>Mobile APP remote function</b>	<ul style="list-style-type: none"><li>• Vehicle status check/diagnostics;</li><li>• Vehicle location / find my car; • Service/repair appointment</li></ul>

## Driving Control

<b>Driving mode switch</b>	<ul style="list-style-type: none"><li>• Sport; • Economy; • Standard/Comfort</li></ul>
<b>Automatic parking</b>	<ul style="list-style-type: none"><li>•</li></ul>
<b>Hill start assist</b>	<ul style="list-style-type: none"><li>•</li></ul>
<b>Engine start-stop technology</b>	<ul style="list-style-type: none"><li>•</li></ul>

## Driving Hardware

## Driving Hardware (continued)

<b>Front/rear parking radar</b>	Front •/Rear •
<b>Driving Assistance Camera System</b>	• Reversing image
<b>Front perception camera</b>	• Monocular
<b>Number of cameras</b>	• 2
<b>Number of ultrasonic radars</b>	• 12

## In-car charging

<b>Multimedia/charging port</b>	•USB;•Type-C
<b>Number of USB/Type-C ports</b>	• 3 in the front row/2 in the back row

## Optional Package

<b>Optional Package</b>	Smart Driving Suit 1 (4600 yuan Contains Electrically adjustable front passenger seat Heated front seats)
-------------------------	-----------------------------------------------------------------------------------------------------------

---

"●" = Standard equipment

"-" = Not available

"○" = Optional equipment.

Note: These are Chinese market vehicles. Warranty coverage is not available outside of China.