

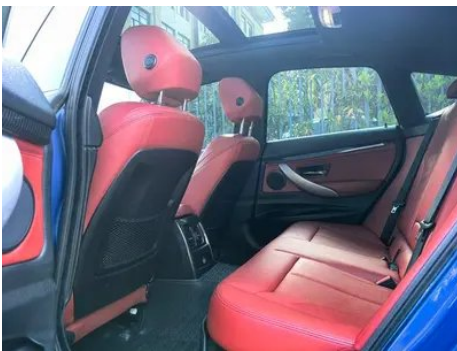
Vehicle Detail Report

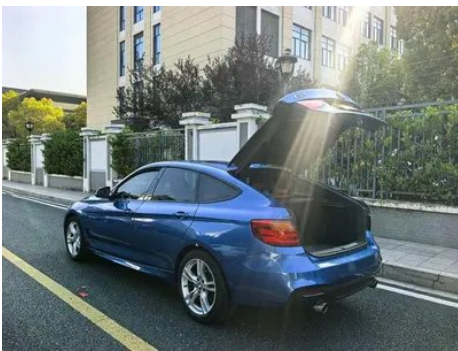
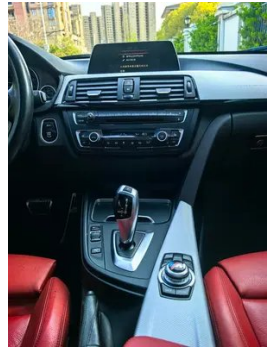
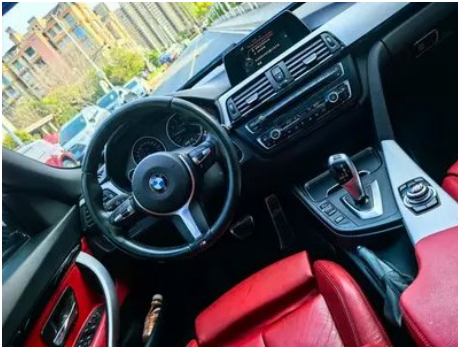
BMW 3 Series GT 2016 320i Design Suit Type

Basic Information

Brand	BMW
Mileage	133,000 km
Color	Blue
First Registration	2016-06-01
Transfer Count	0

Vehicle Images







Vehicle Condition

1. Left front strut tower, Aged and cracked rubber component. 2. Right front strut tower, Aged and cracked rubber component. 3. Inner side of left B-pillar, Non-accident-related deformation. 4. Left rear quarter panel, Paint repair, Body panel repair. 5. Right rear quarter panel, Paint repair, Body panel repair. 6. Driver's seat, Wear, Aging. 7. Front passenger seat, Wear, Aging. 8. Rear seats, Wear. 9. Airbag, Signs of removal, Replaced.

Configuration Information

Model Information

Model Name	BMW 3 Series GT 2016 320i design suit
Launch Date	2015.12

Basic parameters

Vehicle Class	Mid-size car
Energy Type	Gasoline
Maximum Power (kW)	135
Maximum Torque (N·m)	270
Transmission	8-gear manual integration
Body Type	Liftback
Engine	2.0L 184 hp L4
Dimensions (L×W×H) (mm)	4824*1828*1518
Official 0-100 km/h Acceleration (s)	8
Top Speed (km/h)	229
Curb Weight (kg)	-
Maximum Gross Weight (kg)	-
NEDC Combined Fuel Consumption (L/100km)	7

engine

Engine Model	N20B20
Displacement (mL)	1997
Displacement (L)	2.0

engine (continued)

Induction Type	Turbocharging
Cylinder Arrangement	L
Number of Cylinders	4
Valves per Cylinder	4
Compression Ratio	11
Valve Train	DOHC
Bore (mm)	84
Stroke (mm)	90.1
Maximum Power (PS)	184
Max Power Speed (rpm)	5000
Max Torque Speed (rpm)	1250-4500
Maximum net power (kW)	-
Fuel Grade	95.
Fuel Delivery System	Direct injection
Cylinder Head Material	Aluminum alloy
Cylinder Block Material	Aluminum alloy
Engine-specific technologies	Double VANOS/Valvetronic

Screen/System

Central control color screen	<ul style="list-style-type: none">•
Bluetooth/In-car Phone	<ul style="list-style-type: none">•
In-car CD/DVD Player	<ul style="list-style-type: none">• Single disc CD

Body

Length (mm)	4824
Width (mm)	1828
Height (mm)	1518
Wheelbase (mm)	2920
Front Track (mm)	-
Rear Track (mm)	-
Door Opening Type	-
Number of Doors	5
Number of Seats	5
Fuel Tank Capacity (L)	60

Body (continued)

Trunk volume (L)	-
Drag Coefficient (Cd)	-

Gearbox

Abbreviation	8-gear manual integration
Number of Gears	8
Transmission Type	Automatic Transmission with Manual Mode (AT)

Chassis steering

Drive Type	Front-engine, Rear-wheel drive (FR)
Front Suspension Type	Dual-ball-joint MacPherson independent suspension
Rear Suspension Type	Multi-link independent suspension
Power Steering Type	Electric power assistance
Vehicle structure	bearing type

Seat Configuration

Seat Material	• Leather
Main seat adjustment	• Front and rear adjustment; • Backrest adjustment; • Height adjustment (2-way);○ Height adjustment (4-way)
Co-seat adjustment method	• Front and rear adjustment; • Backrest adjustment
Electric adjustment of driver's seat and passenger seat	Main •/Deputy •
Front seat functions	• Heating
Electric seat memory function	•
Front passenger seat rear adjustable buttons	-
Rear seat folding	• Proportional down
Front/rear center armrest	Front •/Rear •
Rear cup holder	•
Second row seat functions	○ Heating (USD 515)
Sports style seats	○

Active safety

Anti-lock Braking System (ABS)	•
---------------------------------------	---

Active safety (continued)

Electronic Brakeforce Distribution (EBD/CBC)	•
Brake Assist System (EBA/BAS/BA)	•
Traction Control System (ASR/TCS/TRC)	•
Electronic Stability Control (ESC/ESP/DSC)	•
Tire Pressure Monitoring System (TPMS)	•
Seat Belt Reminder	•
ISOFIX Child Seat Anchors	•
Lane Departure Warning System (LDWS)	-
Autonomous Emergency Braking (AEB)	-
Driver Fatigue Detection	-
Emergency Call System (eCall)	•

Air conditioning/refrigerator

Air conditioning temperature control method	• Automatic air conditioning
Rear Independent Climate Control	-
Rear seat air vents	•
Temperature zone control	•
Car air purifier	-
In-cabin PM2.5 Filter	-

Passive safety

Driver/passenger airbag	Main •/Deputy •
Front/rear side airbags	Front •/Rear-
Front/rear head airbags (curtain airbags)	Front •/Rear •
Run-flat tires	•

Wheel brake

Front Brake Type	Ventilation disc
Rear Brake Type	Ventilation disc
Parking brake type	handbrake

Wheel brake (continued)

Front Tire Size	225/50 R18
Rear Tire Size	225/50 R18
Spare Tire Size	None

Audio/Interior Lighting

Number of speakers	• 4-5 speakers; ○ 6-7 speakers (USD 515)
---------------------------	--

Driving functions

Navigation traffic information display	-
Lane assist	-
Lane Keeping Assist System	-
Cruise control system	○ Cruise control
Satellite navigation system	•
Parking Assist	-

Exterior lighting

Low beam light source	• Xenon
High beam light source	• Xenon
LED daytime running lights	•
Adaptive high and low beam	•
Automatic headlights	•
Front fog lights	•
Height-adjustable headlights	•
Headlight Delay Off	-
Headlight cleaning device	•

Exterior mirrors

Exterior mirror function	• Electric adjustment; • Electric folding; • Rearview mirror memory; • Rearview mirror heating; • Automatic anti-glare
---------------------------------	--

Appearance/anti-theft

Rim material	• Aluminum alloy
Electric trunk	•
Electronic engine immobilizer	•

Appearance/anti-theft (continued)

Central locking system in the car	•
Key Type	• Remote key
Keyless start system	•
Keyless entry function	○
Appearance Kit	○ Sports style
Frameless door design	•

Skylight/Glass

Sunroof Type	• Panoramic sunroof
Front/rear electric windows	Front •/Rear •
Window anti-pinch function	•
Car makeup mirror	•
Rear wiper	-
Rain sensor wiper function	•

Interior and exterior color

Exterior Color	Snow mountain white:#FAFAFA; Estolan:#143594; Gem green:#242224; Glacier silver:#949A9C; Imperial blue:#273042; Black:#000000; Ore white:#E7E7E7; Ore ash:#949A9C; Melbourne red:#610303; Gravel yellow:#968982; Crystal blue:#B1C8D6; Midnight blue:#554006 starlight:#05526E;
Interior Color	Black:#000000; Black/Saddle Brown:#000000/#C8916D; Black/Coral Red:#000000/#F75800; Black/Veneto Beige:#000000/#BEBE; Black/Pearl White:#000000/#EBDEEB

Steering wheel/interior mirror

Steering Wheel Material	• Cortex
Steering wheel position adjustment	• Manual up and down front and rear adjustment
Multi-function steering wheel	•
Heated Steering Wheel	○
Steering wheel memory	-

Steering wheel/interior mirror (continued)

Trip computer display screen	•
Full LCD instrument panel	-
Interior rearview mirror function	• Automatic anti-glare
HUD Head Up Digital Display	○

Intelligent configuration

Connected Car Services	-
OTA Updates	-

Driving Control

Automatic parking	-
Hill start assist	•
Engine start-stop technology	•

Driving Hardware

Front/rear parking radar	Front •/Rear •
Driving Assistance Camera System	• Reversing image

In-car charging

Multimedia/charging port	•USB;•AUX
---------------------------------	-----------

"●" = Standard equipment

"-" = Not available

"○" = Optional equipment.

Note: These are Chinese market vehicles. Warranty coverage is not available outside of China.