

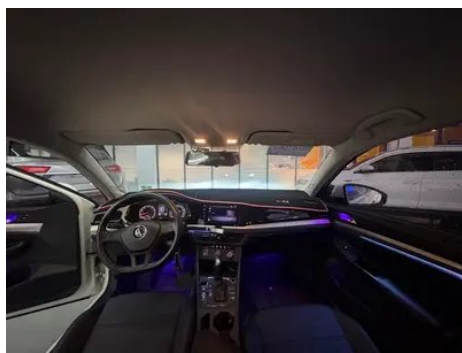
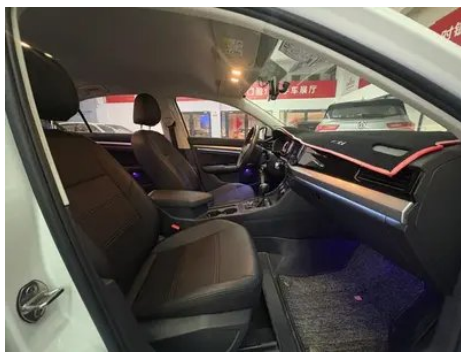
Vehicle Detail Report

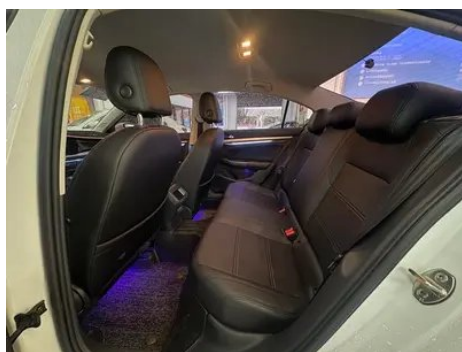
Volkswagen Bora 2021 1.5L Auto Fashion Smart Union Edition

Basic Information

Brand	Volkswagen
Mileage	98,000 km
Color	White
First Registration	2021-08-01
Transfer Count	0

Vehicle Images





Vehicle Condition

1. Driver's seat rails and frame, Signs of removal. 2. Front passenger seat rails and frame, Signs of removal.

Configuration Information

Model Information

Model Name	Volkswagen Bora 2021 1.5L Auto Fashion Smart Union Edition
Launch Date	2020.11

Basic parameters

Vehicle Class	compact car
Energy Type	Gasoline
Maximum Power (kW)	83
Maximum Torque (N·m)	145
Transmission	6-speed manual integration
Body Type	Sedan
Engine	1.5L 113 hp L4
Dimensions (L×W×H) (mm)	4663*1815*1462
Official 0-100 km/h Acceleration (s)	13.7
Top Speed (km/h)	190
Curb Weight (kg)	1285
Maximum Gross Weight (kg)	1730
NEDC Combined Fuel Consumption (L/100km)	5.7

Basic parameters (continued)

WLTP Combined Fuel Consumption (L/100km)	6.31
---	------

engine

Engine Model	EA211-DMB
Displacement (mL)	1498
Displacement (L)	1.5
Induction Type	Natural aspiration
Cylinder Arrangement	L
Number of Cylinders	4
Valves per Cylinder	4
Valve Train	DOHC
Maximum Power (PS)	113
Max Power Speed (rpm)	6000
Max Torque Speed (rpm)	3900
Maximum net power (kW)	83
Fuel Grade	92.
Fuel Delivery System	Multi-point EFI
Cylinder Head Material	Aluminum alloy
Cylinder Block Material	Aluminum alloy
Engine layout	Horizontal

Screen/System

Central control color screen	<ul style="list-style-type: none">• Touch LCD screen
Infotainment Screen Size	<ul style="list-style-type: none">• 8 inches
Bluetooth/In-car Phone	<ul style="list-style-type: none">•
Smartphone Integration/Mirroring	<ul style="list-style-type: none">• Apple CarPlay support;• Baidu CarLife support;• OEM smartphone integration/mirroring

Body

Length (mm)	4663
Width (mm)	1815
Height (mm)	1462
Wheelbase (mm)	2688
Front Track (mm)	1546
Rear Track (mm)	1520

Body (continued)

Ground Clearance (Fully Loaded) (mm)	126
Door Opening Type	swing door
Number of Doors	4
Number of Seats	5
Fuel Tank Capacity (L)	50
Trunk volume (L)	506
Drag Coefficient (Cd)	-
Approach Angle (°)	16
Departure Angle (°)	15
Minimum Turning Radius (m)	5.65

Gearbox

Abbreviation	6-speed manual integration
Number of Gears	6
Transmission Type	Automatic Transmission with Manual Mode (AT)

Chassis steering

Drive Type	Front-engine, Front-wheel drive (FF)
Front Suspension Type	MacPherson independent suspension
Rear Suspension Type	Torsion beam non-independent suspension
Power Steering Type	Electric power assistance
Vehicle structure	bearing type

Seat Configuration

Seat Material	<ul style="list-style-type: none">• Fabric
Main seat adjustment	<ul style="list-style-type: none">• Front and rear adjustment;• Backrest adjustment;• Height adjustment (2-way)
Co-seat adjustment method	<ul style="list-style-type: none">• Front and rear adjustment;• Backrest adjustment
Electric adjustment of driver's seat and passenger seat	-
Front passenger seat rear adjustable buttons	-
Rear seat folding	<ul style="list-style-type: none">• Proportional down

Seat Configuration (continued)

Front/rear center armrest	Front •/Rear-
Rear cup holder	-

Active safety

Anti-lock Braking System (ABS)	•
Electronic Brakeforce Distribution (EBD/CBC)	•
Brake Assist System (EBA/BAS/BA)	•
Traction Control System (ASR/TCS/TRC)	•
Electronic Stability Control (ESC/ESP/DSC)	•
Tire Pressure Monitoring System (TPMS)	• Tire pressure alarm
Seat Belt Reminder	• Front row
ISOFIX Child Seat Anchors	•
Lane Departure Warning System (LDWS)	-
Autonomous Emergency Braking (AEB)	-
Driver Fatigue Detection	-

Air conditioning/refrigerator

Air conditioning temperature control method	• Manual air conditioning
Rear Independent Climate Control	-
Rear seat air vents	-
Temperature zone control	-
Car air purifier	-
In-cabin PM2.5 Filter	•

Passive safety

Driver/passenger airbag	Main •/Deputy •
Front/rear side airbags	-
Front/rear head airbags (curtain airbags)	-

Wheel brake

Front Brake Type	Ventilation disc
-------------------------	------------------

Wheel brake (continued)

Rear Brake Type	Disc
Parking brake type	Electronic Parking
Front Tire Size	195/65 R15
Rear Tire Size	195/65 R15
Spare Tire Size	Not full-size

Audio/Interior Lighting

Number of speakers	• 6 speakers
---------------------------	--------------

Driving functions

Navigation traffic information display	-
Lane assist	-
Lane Keeping Assist System	-
Satellite navigation system	-
Parking Assist	-

Exterior lighting

Low beam light source	•LED
High beam light source	•LED
LED daytime running lights	•
Adaptive high and low beam	-
Automatic headlights	-
Height-adjustable headlights	•
Headlight Delay Off	-

Exterior mirrors

Exterior mirror function	• Electric adjustment; • Mirror heating
---------------------------------	---

Appearance/anti-theft

Rim material	• Aluminum alloy
Electronic engine immobilizer	•
Central locking system in the car	•
Key Type	• Remote key
Keyless start system	-

Skylight/Glass

Front/rear electric windows	Front •/Rear •
One-touch window lifting function	• Full vehicle
Window anti-pinch function	•
Car makeup mirror	• Main driving position; • First officer
Rear wiper	-

Interior and exterior color

Exterior Color	Polar White #FFFFFF Haibeijin #C8AA96 Manganite Black #010101 Shimmering Silver #C7C5C6
Interior Color	Black:#252B2A

Steering wheel/interior mirror

Steering Wheel Material	• Plastic
Steering wheel position adjustment	• Manual up and down front and rear adjustment
Multi-function steering wheel	-
Heated Steering Wheel	-
Steering wheel memory	-
Trip computer display screen	• Monochrome
Full LCD instrument panel	-
Interior rearview mirror function	• Manual anti-glare
Gear shifting	• Mechanical gear shift

Intelligent configuration

Connected Car Services	•
OTA Updates	-
4G/5G Network	•4G
Mobile APP remote function	•

Driving Control

Driving mode switch	• Movement
Automatic parking	•
Hill start assist	•

Driving Control (continued)

Energy recovery system	•
Engine start-stop technology	•

Driving Hardware

Front/rear parking radar	Front-/Rear •
Number of ultrasonic radars	• 4

In-car charging

Multimedia/charging port	•USB
Number of USB/Type-C ports	• 2 in the front row/2 in the back row

"●" = Standard equipment

"-" = Not available

"○" = Optional equipment.

Note: These are Chinese market vehicles. Warranty coverage is not available outside of China.