

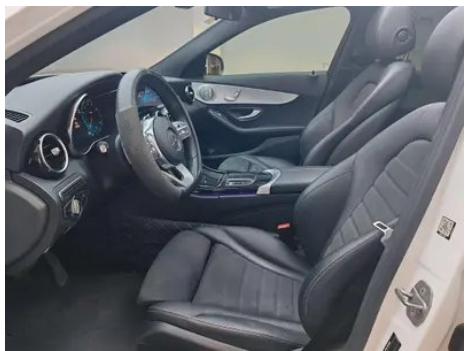
Vehicle Detail Report

Mercedes-Benz C-Class 2021 C 260 Xing Yao Zhen Tibetan Edition

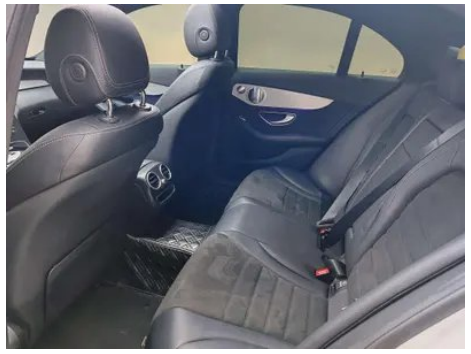
Basic Information

Brand	Mercedes-Benz
Mileage	82,000 km
Color	White
First Registration	2021-06-01
Transfer Count	1

Vehicle Images







Vehicle Condition

1. Rear body panel, Deformation, Body panel repair. 2. Driver's seat rails and frame, Signs of removal. 3. Front passenger seat rails and frame, Signs of removal. 4. Right rear quarter panel, Deformation.

Configuration Information

Model Information

Model Name	Mercedes-Benz C-Class 2021 C 260 Xing Yao Zhen Tibetan Edition
Launch Date	2020.09

Basic parameters

Vehicle Class	Mid-size car
Energy Type	Gasoline + 48V Mild Hybrid System
Maximum Power (kW)	135
Maximum Torque (N·m)	280
Transmission	9-gear manual integration
Body Type	Sedan
Engine	1.5T 184 horsepower L4
Dimensions (L×W×H) (mm)	4704*1810*1454
Official 0-100 km/h Acceleration (s)	8.3
Top Speed (km/h)	236
Curb Weight (kg)	1620
Maximum Gross Weight (kg)	-
NEDC Combined Fuel Consumption (L/100km)	6.1

engine

Engine Model	264 915
Displacement (mL)	1497
Displacement (L)	1.5
Induction Type	Turbocharging

engine (continued)

Cylinder Arrangement	L
Number of Cylinders	4
Valves per Cylinder	4
Valve Train	DOHC
Maximum Power (PS)	184
Max Power Speed (rpm)	6100
Max Torque Speed (rpm)	3000-4000
Maximum net power (kW)	-
Fuel Grade	95.
Fuel Delivery System	Direct injection
Cylinder Head Material	Aluminum alloy
Cylinder Block Material	Aluminum alloy

Screen/System

Central control color screen	<ul style="list-style-type: none">• Ordinary LCD screen
Infotainment Screen Size	<ul style="list-style-type: none">• 10.25 inches
Bluetooth/In-car Phone	<ul style="list-style-type: none">•
Smartphone Integration/Mirroring	<ul style="list-style-type: none">• Apple CarPlay support;• Baidu CarLife support
Voice recognition control system	<ul style="list-style-type: none">• Multimedia system;○ Navigation;• Telephone;• Air conditioning

Body

Length (mm)	4704
Width (mm)	1810
Height (mm)	1454
Wheelbase (mm)	2840
Front Track (mm)	1574
Rear Track (mm)	1540
Door Opening Type	-
Number of Doors	4
Number of Seats	5
Fuel Tank Capacity (L)	66
Trunk volume (L)	-
Drag Coefficient (Cd)	-

Gearbox

Gearbox (continued)

Abbreviation	9-gear manual integration
Number of Gears	9
Transmission Type	Automatic Transmission with Manual Mode (AT)

Chassis steering

Drive Type	Front-engine, Rear-wheel drive (FR)
Front Suspension Type	Multi-link independent suspension
Rear Suspension Type	Multi-link independent suspension
Power Steering Type	Electric power assistance
Vehicle structure	bearing type

Seat Configuration

Seat Material	• Imitation leather
Main seat adjustment	• Front and rear adjustment; • Backrest adjustment; • Height adjustment (4-way); • Leg rest adjustment; • Lumbar support (4-way)
Co-seat adjustment method	• Front and rear adjustment; • Backrest adjustment; • Height adjustment (4-way); • Leg rest adjustment; • Lumbar support (4-way)
Electric adjustment of driver's seat and passenger seat	Main •/Deputy •
Front passenger seat rear adjustable buttons	-
Front/rear center armrest	Front •/Rear •
Rear cup holder	•

Active safety

Anti-lock Braking System (ABS)	•
Electronic Brakeforce Distribution (EBD/CBC)	•
Brake Assist System (EBA/BAS/BA)	•
Traction Control System (ASR/TCS/TRC)	•
Electronic Stability Control (ESC/ESP/DSC)	•

Active safety (continued)

Tire Pressure Monitoring System (TPMS)	• Tire pressure display
Seat Belt Reminder	• Front row
ISOFIX Child Seat Anchors	•
Lane Departure Warning System (LDWS)	-
Autonomous Emergency Braking (AEB)	•
Driver Fatigue Detection	•
Emergency Call System (eCall)	•

Air conditioning/refrigerator

Air conditioning temperature control method	• Automatic air conditioning
Rear Independent Climate Control	-
Rear seat air vents	•
Temperature zone control	•
Car air purifier	-
In-cabin PM2.5 Filter	•

Passive safety

Driver/passenger airbag	Main •/Deputy •
Front/rear side airbags	Front •/Rear ○ Rear side airbags (USD 456)
Front/rear head airbags (curtain airbags)	Front •/Rear •
Run-flat tires	•
Knee airbag	• Driver's knee airbag
Passive pedestrian protection	•

Wheel brake

Front Brake Type	Ventilation disc
Rear Brake Type	Disc
Parking brake type	Electronic Parking
Front Tire Size	225/45 R18
Rear Tire Size	245/40 R18
Spare Tire Size	None

Audio/Interior Lighting

Speaker Brand Name	<ul style="list-style-type: none">• Burmester Voices of Berlin
Number of speakers	<ul style="list-style-type: none">• 13 speakers
Interior ambient lighting	<ul style="list-style-type: none">• 64 colors

Driving functions

Navigation traffic information display	<input type="radio"/>
Lane assist	<input type="radio"/>
Lane Keeping Assist System	-
Cruise control system	<ul style="list-style-type: none">• Cruise control
Satellite navigation system	<input type="radio"/>
Parking Assist	<ul style="list-style-type: none">•

Exterior lighting

Low beam light source	<ul style="list-style-type: none">• LED
High beam light source	<ul style="list-style-type: none">• LED
LED daytime running lights	<ul style="list-style-type: none">•
Adaptive high and low beam	-
Automatic headlights	<ul style="list-style-type: none">•
Height-adjustable headlights	<ul style="list-style-type: none">•
Headlight Delay Off	<ul style="list-style-type: none">•

Exterior mirrors

Exterior mirror function	<ul style="list-style-type: none">• Electric adjustment;• Electric folding;• Heated mirrors;• Automatic folding when locking the car;<input type="radio"/> Auto-dimming
---------------------------------	---

Appearance/anti-theft

Rim material	<ul style="list-style-type: none">• Aluminum alloy
Electric trunk	<ul style="list-style-type: none">•
Electronic engine immobilizer	<ul style="list-style-type: none">•
Central locking system in the car	<ul style="list-style-type: none">•
Key Type	<ul style="list-style-type: none">• Remote key
Keyless start system	<ul style="list-style-type: none">•
Appearance Kit	<ul style="list-style-type: none">• Sports style

Appearance/anti-theft (continued)

Hands-free Trunk	○
Remote start function	•

Skylight/Glass

Sunroof Type	• Electric sunroof
Front/rear electric windows	Front •/Rear •
One-touch window lifting function	• Full vehicle
Window anti-pinch function	•
Car makeup mirror	• Main driver's lamp; • co-pilot's lamp
Rear wiper	-
Rain sensor wiper function	• Rainfall-sensing
Rear side privacy glass	•

Interior and exterior color

Exterior Color	Arctic White #F4F4F4 Grandmother Stone Green #143C28 Gem blue #0D2C95 Hao Sha Yin #D7DCDC water silica alcalite blue #0C0D32 charcoal gray blue #464C64 obsidian black #000000 Iridium Silver #D7DBE9 Moonlight Lime #566262 zircon quartz red #B00D15
Interior Color	Black Mumberry Red #000000 #962A31 Black #000000 Black Silk Beige #000000 #C7BDB3 Coffee brown Silk Beige #231E1B #C7BDB3 magma gray Black #323232 #000000

Steering wheel/interior mirror

Steering Wheel Material	• Leather
Steering wheel position adjustment	• Manual up and down front and rear adjustment
Multi-function steering wheel	•
Heated Steering Wheel	-
Steering wheel memory	-
Trip computer display screen	• Color
Full LCD instrument panel	•

Steering wheel/interior mirror (continued)

LCD instrument size	• 12.3 inches
Interior rearview mirror function	• Manual anti-glare; ○ Automatic anti-glare
Steering Wheel Shift Paddles	•

Intelligent configuration

Connected Car Services	•
OTA Updates	-

Driving Control

Driving mode switch	• Sport; • Economy; • Standard/Comfort
Automatic parking	•
Hill start assist	•
Variable steering ratio	•
Engine start-stop technology	•

Driving Hardware

Front/rear parking radar	Front •/Rear •
Driving Assistance Camera System	• Reversing image

In-car charging

Multimedia/charging port	•USB;•SD
Number of USB/Type-C ports	• 2 in the First row/1 in the 2nd-row

"●" = Standard equipment

"-" = Not available

"○" = Optional equipment.

Note: These are Chinese market vehicles. Warranty coverage is not available outside of China.