

# Vehicle Detail Report

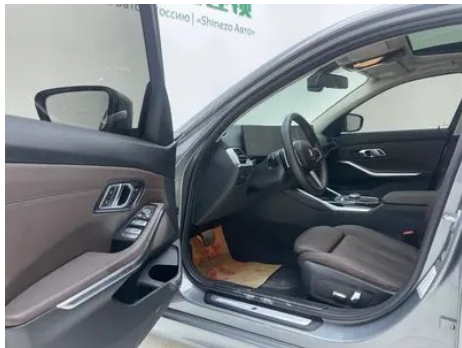
## BMW 3 Series 2023 320Li M Sports suit

### Basic Information

Brand	BMW
Mileage	53,000 km
Color	Dark gray
First Registration	2023-02-01
Transfer Count	1

### Vehicle Images







## Vehicle Condition

1. Front bumper, Paint repair, Scrape. 2. Rear bumper, Paint repair, Replaced. 3. Left front door, Paint chip. 4. Right front door, Paint chip. 5. Left rear door, Deformation. 6. Right rear door, Paint repair. 7. Left front fender, Deformation. 8. Left rear quarter panel, Paint repair, Body panel repair. 9. Right rear quarter panel, Paint repair. 10. Left tail light, Water stain.

## Configuration Information

### Model Information

<b>Model Name</b>	BMW 3 Series 2023 320Li M Sports suit
<b>Launch Date</b>	2022.08

### Basic parameters

<b>Vehicle Class</b>	Mid-size car
<b>Energy Type</b>	Gasoline
<b>Maximum Power (kW)</b>	115
<b>Maximum Torque (N·m)</b>	250
<b>Transmission</b>	8-gear manual integration
<b>Body Type</b>	Sedan
<b>Engine</b>	2.0T 156 horsepower L4
<b>Dimensions (L×W×H) (mm)</b>	4838*1827*1454
<b>Official 0-100 km/h Acceleration (s)</b>	9.1
<b>Top Speed (km/h)</b>	222
<b>Curb Weight (kg)</b>	1601
<b>Maximum Gross Weight (kg)</b>	2055
<b>WLTP Combined Fuel Consumption (L/100km)</b>	6.9

### engine

<b>Engine Model</b>	B48B20C
<b>Displacement (mL)</b>	1998
<b>Displacement (L)</b>	2.0

## engine (continued)

<b>Induction Type</b>	Turbocharging
<b>Cylinder Arrangement</b>	L
<b>Number of Cylinders</b>	4
<b>Valves per Cylinder</b>	4
<b>Valve Train</b>	DOHC
<b>Maximum Power (PS)</b>	156
<b>Max Power Speed (rpm)</b>	4500-6500
<b>Max Torque Speed (rpm)</b>	1300-4300
<b>Maximum net power (kW)</b>	115
<b>Fuel Grade</b>	95.
<b>Fuel Delivery System</b>	Direct injection
<b>Cylinder Head Material</b>	Aluminum alloy
<b>Cylinder Block Material</b>	Aluminum alloy
<b>Engine layout</b>	Longitudinal

## Screen/System

<b>Central control color screen</b>	<ul style="list-style-type: none"><li>• Touch LCD screen</li></ul>
<b>Infotainment Screen Size</b>	<ul style="list-style-type: none"><li>• 14.9 inches</li></ul>
<b>Bluetooth/In-car Phone</b>	<ul style="list-style-type: none"><li>•</li></ul>
<b>Smartphone Integration/ Mirroring</b>	<ul style="list-style-type: none"><li>• Support CarPlay</li></ul>
<b>Voice recognition control system</b>	<ul style="list-style-type: none"><li>• Multimedia system;</li><li>• Navigation;</li><li>• Telephone;</li><li>• Air conditioning;</li><li>• Windows</li></ul>
<b>In-vehicle intelligent system</b>	<ul style="list-style-type: none"><li>• iDrive</li></ul>

## Body

<b>Length (mm)</b>	4838
<b>Width (mm)</b>	1827
<b>Height (mm)</b>	1454
<b>Wheelbase (mm)</b>	2961
<b>Front Track (mm)</b>	1583
<b>Rear Track (mm)</b>	1599
<b>Door Opening Type</b>	swing door
<b>Number of Doors</b>	4
<b>Number of Seats</b>	5

## Body (continued)

<b>Fuel Tank Capacity (L)</b>	59
<b>Trunk volume (L)</b>	-
<b>Drag Coefficient (Cd)</b>	-
<b>Approach Angle (°)</b>	15
<b>Departure Angle (°)</b>	18

## Gearbox

<b>Abbreviation</b>	8-gear manual integration
<b>Number of Gears</b>	8
<b>Transmission Type</b>	Automatic Transmission with Manual Mode (AT)

## Chassis steering

<b>Drive Type</b>	Front-engine, Rear-wheel drive (FR)
<b>Front Suspension Type</b>	Dual-ball-joint MacPherson independent suspension
<b>Rear Suspension Type</b>	Multi-link independent suspension
<b>Power Steering Type</b>	Electric power assistance
<b>Vehicle structure</b>	bearing type

## Seat Configuration

<b>Seat Material</b>	• Imitation leather
<b>Main seat adjustment</b>	• Front and rear adjustment; • Backrest adjustment; • Height adjustment (4-way); • Leg rest adjustment; ○ Lumbar support (4-way)(USD 206)
<b>Co-seat adjustment method</b>	• Front and rear adjustment; • Backrest adjustment; • Height adjustment (4-way); • Leg support adjustment
<b>Electric adjustment of driver's seat and passenger seat</b>	Main •/Deputy •
<b>Front seat functions</b>	○ Heating
<b>Electric seat memory function</b>	• Driving position
<b>Front passenger seat rear adjustable buttons</b>	-
<b>Front/rear center armrest</b>	Front •/Rear •
<b>Rear cup holder</b>	•

## Active safety

## Active safety (continued)

<b>Anti-lock Braking System (ABS)</b>	•
<b>Electronic Brakeforce Distribution (EBD/CBC)</b>	•
<b>Brake Assist System (EBA/BAS/BA)</b>	•
<b>Traction Control System (ASR/TCS/TRC)</b>	•
<b>Electronic Stability Control (ESC/ESP/DSC)</b>	•
<b>Tire Pressure Monitoring System (TPMS)</b>	• Tire pressure display
<b>Seat Belt Reminder</b>	• Front row
<b>ISOFIX Child Seat Anchors</b>	•
<b>Lane Departure Warning System (LDWS)</b>	○
<b>Autonomous Emergency Braking (AEB)</b>	○
<b>Driver Fatigue Detection</b>	•
<b>Forward Collision Warning (FCW)</b>	○
<b>Emergency Call System (eCall)</b>	•

## Air conditioning/refrigerator

<b>Air conditioning temperature control method</b>	• Automatic air conditioning
<b>Rear Independent Climate Control</b>	•
<b>Rear seat air vents</b>	•
<b>Temperature zone control</b>	•
<b>Car air purifier</b>	-
<b>In-cabin PM2.5 Filter</b>	•

## Passive safety

<b>Driver/passenger airbag</b>	Main •/Deputy •
<b>Front/rear side airbags</b>	Front •/Rear-
<b>Front/rear head airbags (curtain airbags)</b>	Front •/Rear •
<b>Run-flat tires</b>	•

## Passive safety (continued)

<b>Passive pedestrian protection</b>	<ul style="list-style-type: none"><li>•</li></ul>
--------------------------------------	---------------------------------------------------

## Wheel brake

<b>Front Brake Type</b>	Ventilation disc
<b>Rear Brake Type</b>	Ventilation disc
<b>Parking brake type</b>	Electronic Parking
<b>Front Tire Size</b>	225/45 R18
<b>Rear Tire Size</b>	225/45 R18
<b>Spare Tire Size</b>	None

## Audio/Interior Lighting

<b>Speaker Brand Name</b>	<input type="radio"/> Harman/Kardon Harman Kardon
<b>Number of speakers</b>	<ul style="list-style-type: none"><li>• 6 speakers; <input type="radio"/> 10 speakers (USD 471); <input type="radio"/> 16 speakers</li></ul>
<b>Interior ambient lighting</b>	<input type="radio"/> 9 colors (USD 500)

## Driving functions

<b>Navigation traffic information display</b>	<ul style="list-style-type: none"><li>•</li></ul>
<b>Lane assist</b>	<input type="radio"/>
<b>Lane Keeping Assist System</b>	<input type="radio"/>
<b>Cruise control system</b>	<ul style="list-style-type: none"><li>• Constant speed cruise; <input type="radio"/> Full speed adaptive cruise (USD 868)</li></ul>
<b>Satellite navigation system</b>	<ul style="list-style-type: none"><li>•</li></ul>
<b>Driving assistance level</b>	<input type="radio"/> L2
<b>Rear Cross Traffic Alert</b>	<input type="radio"/>
<b>Lane centering</b>	<input type="radio"/>
<b>Road traffic sign recognition</b>	<input type="radio"/>
<b>Tracking reverse</b>	<input type="radio"/>
<b>Parking Assist</b>	<input type="radio"/>
<b>Lane Change Assist</b>	<input type="radio"/>

## Exterior lighting

<b>Low beam light source</b>	<ul style="list-style-type: none"><li>•LED</li></ul>
<b>High beam light source</b>	<ul style="list-style-type: none"><li>•LED</li></ul>
<b>LED daytime running lights</b>	<ul style="list-style-type: none"><li>•</li></ul>

## Exterior lighting (continued)

<b>Adaptive high and low beam</b>	○(USD 1,338)
<b>Automatic headlights</b>	•
<b>Height-adjustable headlights</b>	•
<b>Headlight Delay Off</b>	•

## Exterior mirrors

<b>Exterior mirror function</b>	• Electric adjustment; • Electric folding; • Rearview mirror memory; • Rearview mirror heating; • Automatic downturning when reversing; • Automatic folding when locked; ○ Automatic anti-glare
---------------------------------	-------------------------------------------------------------------------------------------------------------------------------------------------------------------------------------------------

## Appearance/anti-theft

<b>Rim material</b>	• Aluminum alloy
<b>Electric trunk</b>	○
<b>Electronic engine immobilizer</b>	•
<b>Central locking system in the car</b>	•
<b>Key Type</b>	• Remote key
<b>Keyless start system</b>	•
<b>Keyless entry function</b>	○ Whole vehicle
<b>Appearance Kit</b>	• Sports style
<b>Hands-free Trunk</b>	○
<b>Remote start function</b>	○
<b>Active closed grille</b>	•

## Skylight/Glass

<b>Sunroof Type</b>	• Openable panoramic sunroof
<b>Front/rear electric windows</b>	Front •/Rear •
<b>One-touch window lifting function</b>	• Full car
<b>Window anti-pinch function</b>	•
<b>Car makeup mirror</b>	• Main driver's lamp; • co-pilot's lamp
<b>Rear wiper</b>	-
<b>Rain sensor wiper function</b>	• Rainfall-sensing

## Interior and exterior color

<b>Exterior Color</b>	Ore white:#E7E7E7; Carbon black:#232A30; Porty blue:#1459A0; Coast blue:#0085A4; Skyscraper ash:#808686; Melbourne Red:#610303
<b>Interior Color</b>	Black/Volcanic Red:#000000/#8A3D47; Black:#000000; Black/Mocha:#000000/#423534; Volcanic Red/Black:#8A3D47/#000000

## Steering wheel/interior mirror

<b>Steering Wheel Material</b>	<ul style="list-style-type: none"><li>• Leather</li></ul>
<b>Steering wheel position adjustment</b>	<ul style="list-style-type: none"><li>• Manual up and down front and rear adjustment</li></ul>
<b>Multi-function steering wheel</b>	<ul style="list-style-type: none"><li>•</li></ul>
<b>Heated Steering Wheel</b>	-
<b>Steering wheel memory</b>	-
<b>Trip computer display screen</b>	<ul style="list-style-type: none"><li>• Color</li></ul>
<b>Full LCD instrument panel</b>	<ul style="list-style-type: none"><li>•</li></ul>
<b>LCD instrument size</b>	<ul style="list-style-type: none"><li>• 12.3 inches</li></ul>
<b>Interior rearview mirror function</b>	<ul style="list-style-type: none"><li>• Manual anti-glare; ○ Automatic anti-glare</li></ul>
<b>Gear shifting</b>	<ul style="list-style-type: none"><li>• Electronic gear shift</li></ul>
<b>HUD Head Up Digital Display</b>	○(USD 1,471)
<b>ETC Device</b>	○(USD 147)
<b>Steering Wheel Shift Paddles</b>	<ul style="list-style-type: none"><li>•</li></ul>

## Intelligent configuration

<b>Connected Car Services</b>	<ul style="list-style-type: none"><li>•</li></ul>
<b>OTA Updates</b>	<ul style="list-style-type: none"><li>•</li></ul>
<b>4G/5G Network</b>	<ul style="list-style-type: none"><li>• 4G;○ 5G(USD 441)</li></ul>
<b>Mobile APP remote function</b>	<ul style="list-style-type: none"><li>• Door control; • Vehicle start; • Vehicle light control; • Air conditioning control; • Vehicle condition inquiry/diagnosis; • Vehicle location/vehicle search</li></ul>
<b>Wi-Fi hotspots</b>	<ul style="list-style-type: none"><li>•</li></ul>

## Driving Control

## Driving Control (continued)

<b>Driving mode switch</b>	• Sport; • Economy; • Standard/Comfort; • Customization/Personalization
<b>Automatic parking</b>	•
<b>Hill start assist</b>	•
<b>Engine start-stop technology</b>	•

## Driving Hardware

<b>Front/rear parking radar</b>	Front •/Rear •
<b>Driving Assistance Camera System</b>	• Reversing image; ○ 360-degree panoramic image

## In-car charging

<b>Multimedia/charging port</b>	•USB;•Type-C
<b>Number of USB/Type-C ports</b>	• 2 in the front row/2 in the back row
<b>Mobile phone wireless charging function</b>	○ Front row

## Optional Package

<b>Optional Package</b>	Winter package (USD 735; Including: front seat heating function, remote engine start); Entertainment package 1(USD 1,176; Including: Harman/Kardon high-end audio system, mobile phone wireless charging); Comfort package 2(USD 1,235; Including: rear trunk lid with automatic control and keyless entry); Innovative package (USD 1,471; Including: intelligent interconnected cockpit (including full-color head-up display system))
-------------------------	------------------------------------------------------------------------------------------------------------------------------------------------------------------------------------------------------------------------------------------------------------------------------------------------------------------------------------------------------------------------------------------------------------------------------------------

"●" = Standard equipment

"-" = Not available

"○" = Optional equipment.

Note: These are Chinese market vehicles. Warranty coverage is not available outside of China.