

Vehicle Detail Report

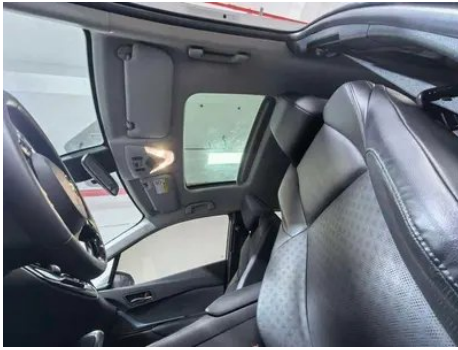
Toyota IZOA 2021 2.0L Yi Moving Edition

Basic Information

Brand	Toyota
Mileage	20,500 km
Color	Silver-gray
First Registration	2021-08-01
Transfer Count	1

Vehicle Images





Vehicle Condition

1. Left rear quarter panel, Paint repair.

Configuration Information

Model Information

Model Name	Toyota IZOA 2021 2.0L Yi Moving Edition
Launch Date	2021.06

Basic parameters

Vehicle Class	Small SUV
Energy Type	Gasoline
Maximum Power (kW)	126
Maximum Torque (N·m)	203

Basic parameters (continued)

Transmission	CVT continuously variable (simulating 10 gears)
Body Type	SUV
Engine	2.0L 171 horsepower L4
Dimensions (L×W×H) (mm)	4390*1795*1565
Official 0-100 km/h Acceleration (s)	10.3
Top Speed (km/h)	185
Curb Weight (kg)	1505
Maximum Gross Weight (kg)	1960
NEDC Combined Fuel Consumption (L/100km)	5.7

engine

Engine Model	M20E
Displacement (mL)	1987
Displacement (L)	2.0
Induction Type	Natural aspiration
Cylinder Arrangement	L
Number of Cylinders	4
Valves per Cylinder	4
Valve Train	DOHC
Bore (mm)	80.5
Stroke (mm)	97.6
Maximum Power (PS)	171
Max Power Speed (rpm)	6600
Max Torque Speed (rpm)	4400-4800
Maximum net power (kW)	126
Fuel Grade	92.
Fuel Delivery System	Mixed injection
Cylinder Head Material	Aluminum alloy
Cylinder Block Material	Aluminum alloy
Engine layout	Horizontal
Engine-specific technologies	VVT-iE

Screen/System

Central control color screen	<ul style="list-style-type: none">• Touch LCD screen
Infotainment Screen Size	<ul style="list-style-type: none">• 8 inches
Bluetooth/In-car Phone	<ul style="list-style-type: none">•
Smartphone Integration/Mirroring	<ul style="list-style-type: none">• Baidu CarLife support

Body

Length (mm)	4390
Width (mm)	1795
Height (mm)	1565
Wheelbase (mm)	2640
Front Track (mm)	1550
Rear Track (mm)	1550
Door Opening Type	swing door
Number of Doors	5
Number of Seats	5
Fuel Tank Capacity (L)	50
Trunk volume (L)	289
Drag Coefficient (Cd)	-
Approach Angle (°)	14
Departure Angle (°)	20
Minimum Turning Radius (m)	5.2
Minimum ground clearance without load (mm)	149

Gearbox

Abbreviation	CVT continuously variable (simulating 10 gears)
Number of Gears	10
Transmission Type	Continuously Variable Transmission (CVT)

Chassis steering

Drive Type	Front-engine, Front-wheel drive (FF)
Front Suspension Type	MacPherson independent suspension
Rear Suspension Type	E-type multi-link independent suspension

Chassis steering (continued)

Power Steering Type	Electric power assistance
Vehicle structure	bearing type

Seat Configuration

Seat Material	<ul style="list-style-type: none">• Fabric
Main seat adjustment	<ul style="list-style-type: none">• Front and rear adjustment;• Backrest adjustment;• Height adjustment (2-way)
Co-seat adjustment method	<ul style="list-style-type: none">• Front and rear adjustment;• Backrest adjustment
Electric adjustment of driver's seat and passenger seat	-
Front passenger seat rear adjustable buttons	-
Rear seat folding	<ul style="list-style-type: none">• Proportional down
Front/rear center armrest	Front •/Rear-
Rear cup holder	-

Active safety

Anti-lock Braking System (ABS)	<ul style="list-style-type: none">•
Electronic Brakeforce Distribution (EBD/CBC)	<ul style="list-style-type: none">•
Brake Assist System (EBA/BAS/BA)	<ul style="list-style-type: none">•
Traction Control System (ASR/TCS/TRC)	<ul style="list-style-type: none">•
Electronic Stability Control (ESC/ESP/DSC)	<ul style="list-style-type: none">•
Tire Pressure Monitoring System (TPMS)	<ul style="list-style-type: none">• Tire pressure alarm
Seat Belt Reminder	<ul style="list-style-type: none">• Full vehicle
ISOFIX Child Seat Anchors	<ul style="list-style-type: none">•
Lane Departure Warning System (LDWS)	<ul style="list-style-type: none">•
Autonomous Emergency Braking (AEB)	<ul style="list-style-type: none">•
Driver Fatigue Detection	-
Forward Collision Warning (FCW)	<ul style="list-style-type: none">•

Active safety (continued)

Emergency Call System (eCall)	•
--------------------------------------	---

Air conditioning/refrigerator

Air conditioning temperature control method	• Manual air conditioning
Rear Independent Climate Control	-
Rear seat air vents	-
Temperature zone control	-
Car air purifier	-
In-cabin PM2.5 Filter	•

Passive safety

Driver/passenger airbag	Main •/Deputy •
Front/rear side airbags	Front •/Rear •
Front/rear head airbags (curtain airbags)	Front •/Rear •
Knee airbag	• Driver's knee airbag
Passenger seat cushion airbag	•

Wheel brake

Front Brake Type	Ventilation disc
Rear Brake Type	Disc
Parking brake type	Electronic Parking
Front Tire Size	215/60 R17
Rear Tire Size	215/60 R17
Spare Tire Size	Not full-size

Audio/Interior Lighting

Number of speakers	• 4 speakers
---------------------------	--------------

Driving functions

Navigation traffic information display	-
Lane assist	-
Lane Keeping Assist System	•
Cruise control system	• Full speed adaptive cruise
Satellite navigation system	-

Driving functions (continued)

Driving assistance level	•L2
Lane centering	•
Driver assistance systems	•Toyota Safety Sense
Parking Assist	-

Exterior lighting

Low beam light source	•LED
High beam light source	•LED
LED daytime running lights	-
Adaptive high and low beam	•
Automatic headlights	•
Height-adjustable headlights	•
Headlight Delay Off	-

Exterior mirrors

Exterior mirror function	• Electric adjustment
---------------------------------	-----------------------

Appearance/anti-theft

Rim material	• Aluminum alloy
Electronic engine immobilizer	•
Central locking system in the car	•
Key Type	• Remote key
Keyless start system	-

Skylight/Glass

Front/rear electric windows	Front •/Rear •
One-touch window lifting function	• Full vehicle
Window anti-pinch function	•
Car makeup mirror	• Main driving position; • First officer
Rear wiper	•

Interior and exterior color

Interior and exterior color (continued)

Exterior Color	Platinum White #E5E5E5 Black Gem blue #1B2543 #1D378A Black Platinum White #000000 #E5E5E5 Moyuan Black Crimson Pearl Red #000000 #851129 Moyuan Black Flowing Light Silver #000000 #B2B5BA Black Yaojing gray #343338 #937A7A Crimson Pearl Red #851129 Flowing Light Silver #BFBDC5 Moyuan Black #1D1510 Yaojing gray #937A7A Silver Moyuan Black #CAC9D1 #1D1510 Silver Yaojing gray #C3C2CA #937A7A Gem blue #1D378A
Interior Color	Black Brown #3E4146 #442C25

Steering wheel/interior mirror

Steering Wheel Material	<ul style="list-style-type: none">• Plastic
Steering wheel position adjustment	<ul style="list-style-type: none">• Manual up and down front and rear adjustment
Multi-function steering wheel	<ul style="list-style-type: none">•
Heated Steering Wheel	-
Steering wheel memory	-
Trip computer display screen	<ul style="list-style-type: none">• Color
Full LCD instrument panel	-
LCD instrument size	<ul style="list-style-type: none">• 4.2 inches
Interior rearview mirror function	<ul style="list-style-type: none">• Manual anti-glare
Gear shifting	<ul style="list-style-type: none">• Mechanical gear shift

Intelligent configuration

Connected Car Services	-
OTA Updates	-

Driving Control

Driving mode switch	<ul style="list-style-type: none">• Sport; • Economy; • Standard/Comfort
Automatic parking	<ul style="list-style-type: none">•
Hill start assist	<ul style="list-style-type: none">•
Engine start-stop technology	<ul style="list-style-type: none">•

Driving Hardware

Front/rear parking radar	-
---------------------------------	---

In-car charging

Multimedia/charging port	•USB
Number of USB/Type-C ports	• 1 in the front row

"●" = Standard equipment

"-" = Not available

"○" = Optional equipment.

Note: These are Chinese market vehicles. Warranty coverage is not available outside of China.