

Vehicle Detail Report

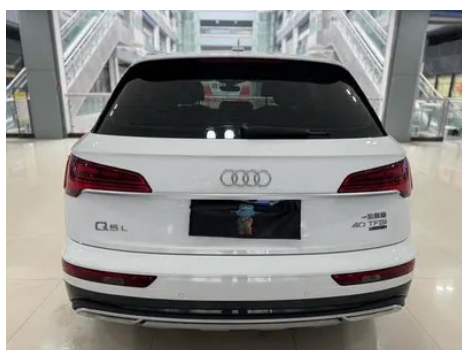
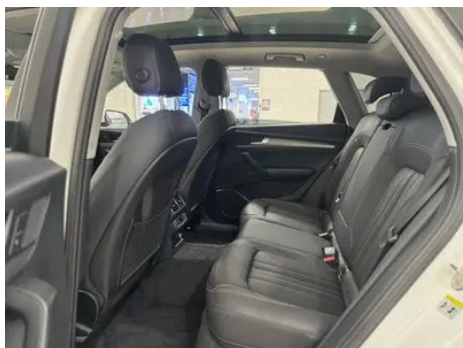
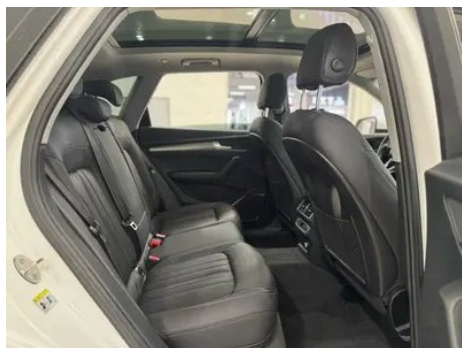
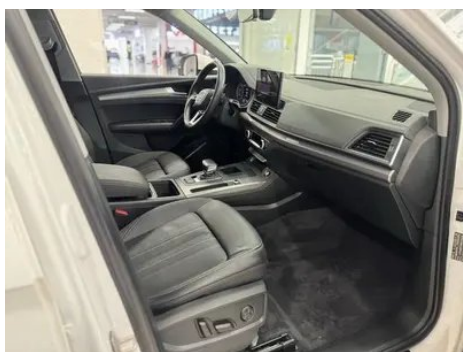
Audi Q5L 2022 40T Fashion and Elegant

Basic Information

Brand	Audi
Mileage	39,000 km
Color	White
First Registration	2023-01-01
Transfer Count	1

Vehicle Images





Vehicle Condition

1. Right rocker panel, Scratch damage. 2. Inner side of left B-pillar, Deformation. 3. Left rear quarter panel, Paint repair, Body panel repair.

Configuration Information

Model Information

Model Name	Audi Q5L 2022 40T Fashion and Elegant
Launch Date	2021.10

Basic parameters

Vehicle Class	Mid-size SUV
Energy Type	Gasoline
Maximum Power (kW)	140

Basic parameters (continued)

Maximum Torque (N·m)	320
Transmission	7-speed wet dual-clutch
Body Type	SUV
Engine	2.0L 190 hp L4
Dimensions (L×W×H) (mm)	4770*1893*1667
Official 0-100 km/h Acceleration (s)	9
Top Speed (km/h)	211
Curb Weight (kg)	1870
Maximum Gross Weight (kg)	2355
NEDC Combined Fuel Consumption (L/100km)	7.2
WLTP Combined Fuel Consumption (L/100km)	7.86

engine

Engine Model	DTA
Displacement (mL)	1984
Displacement (L)	2.0
Induction Type	Turbocharging
Cylinder Arrangement	L
Number of Cylinders	4
Valves per Cylinder	4
Valve Train	DOHC
Maximum Power (PS)	190
Max Power Speed (rpm)	-
Max Torque Speed (rpm)	-
Maximum net power (kW)	140
Fuel Grade	95.
Fuel Delivery System	Mixed injection
Cylinder Head Material	Aluminum alloy
Cylinder Block Material	Cast iron
Engine layout	Longitudinal

Screen/System

Screen/System (continued)

Central control color screen	<ul style="list-style-type: none">• Touch LCD screen
Infotainment Screen Size	<ul style="list-style-type: none">• 10.1 inches
Bluetooth/In-car Phone	<ul style="list-style-type: none">•
Smartphone Integration/Mirroring	<ul style="list-style-type: none">• Apple CarPlay support
Voice recognition control system	<ul style="list-style-type: none">• Multimedia system; ○ Navigation;• Phone
Voice wake-up recognition by region	<ul style="list-style-type: none">• Single area
In-vehicle intelligent system	<ul style="list-style-type: none">• Audi Connect
Touch screen vibration feedback	<ul style="list-style-type: none">•
App Store	<ul style="list-style-type: none">•

Body

Length (mm)	4770
Width (mm)	1893
Height (mm)	1667
Wheelbase (mm)	2907
Front Track (mm)	1616
Rear Track (mm)	1610
Ground Clearance (Fully Loaded) (mm)	166
Door Opening Type	swing door
Number of Doors	5
Number of Seats	5
Fuel Tank Capacity (L)	73
Trunk volume (L)	550
Drag Coefficient (Cd)	-
Approach Angle (°)	21
Departure Angle (°)	23
Minimum Turning Radius (m)	5.9

Gearbox

Abbreviation	7-speed wet dual-clutch
Number of Gears	7

Gearbox (continued)

Transmission Type	Wet Dual-Clutch Transmission (DCT)
--------------------------	------------------------------------

Chassis steering

Drive Type	Front-engine, All-wheel drive (F-AWD)
Four-wheel drive	Timely four-wheel drive
Central differential structure	Multi-plate clutch
Front Suspension Type	Five-link independent suspension
Rear Suspension Type	Five-link independent suspension
Power Steering Type	Electric power assistance
Vehicle structure	bearing type

Seat Configuration

Seat Material	• Imitation leather
Main seat adjustment	• Front and rear adjustment; • Backrest adjustment; • Height adjustment (4-way);○ Leg rest adjustment; • Lumbar support (4-way)
Co-seat adjustment method	• Front and rear adjustment; • Backrest adjustment; • Height adjustment (4-way);○ Leg rest adjustment; • Lumbar support (4-way)
Electric adjustment of driver's seat and passenger seat	Main •/Deputy •
Front seat functions	○ Heating (USD 338); ○ Ventilation (USD 1,456)
Electric seat memory function	○ Driving position (USD 368)
Front passenger seat rear adjustable buttons	-
Rear seat folding	• Proportional down
Front/rear center armrest	Front •/Rear •
Rear cup holder	•
Second row seat functions	○ Heating (USD 471)
Sports style seats	○(USD 0)
Heated/cooled cup holder	○ Heating (USD 235)

Active safety

Active safety (continued)

Anti-lock Braking System (ABS)	•
Electronic Brakeforce Distribution (EBD/CBC)	•
Brake Assist System (EBA/BAS/BA)	•
Traction Control System (ASR/TCS/TRC)	•
Electronic Stability Control (ESC/ESP/DSC)	•
Tire Pressure Monitoring System (TPMS)	• Tire pressure alarm
Seat Belt Reminder	• Front row
ISOFIX Child Seat Anchors	•
Lane Departure Warning System (LDWS)	-
Autonomous Emergency Braking (AEB)	•
Driver Fatigue Detection	-
Forward Collision Warning (FCW)	•
Rear Collision Warning	○
Emergency Call System (eCall)	•

Air conditioning/refrigerator

Air conditioning temperature control method	• Automatic air conditioning
Rear Independent Climate Control	•
Rear seat air vents	•
Temperature zone control	•
Car air purifier	-
In-cabin PM2.5 Filter	-

Passive safety

Driver/passenger airbag	Main •/Deputy •
Front/rear side airbags	Front/rear rear side airbag (USD 235)
Front/rear head airbags (curtain airbags)	Front •/Rear •

Wheel brake

Front Brake Type	Ventilation disc
Rear Brake Type	Ventilation disc
Parking brake type	Electronic Parking
Front Tire Size	235/55 R19
Rear Tire Size	235/55 R19
Spare Tire Size	None

Audio/Interior Lighting

Speaker Brand Name	<input type="radio"/> Bang & Olufsen(USD 1,059)
Number of speakers	<input type="checkbox"/> 10 horns; <input type="radio"/> 19 horns
Interior ambient lighting	<input type="checkbox"/> Solid color; <input type="radio"/> 30 colors (USD 206)
Touch reading light	<input type="checkbox"/>

Driving functions

Navigation traffic information display	<input type="radio"/> (USD 221)
Lane assist	<input type="radio"/> (USD 1,029)
Lane Keeping Assist System	-
Cruise control system	<input type="checkbox"/> Cruise control
Satellite navigation system	<input type="radio"/> (USD 809)
Rear Cross Traffic Alert	<input type="radio"/> (USD 176)
Parking Assist	<input type="radio"/> (USD 191)

Exterior lighting

Low beam light source	<input type="checkbox"/> LED
High beam light source	<input type="checkbox"/> LED
LED daytime running lights	<input type="checkbox"/>
Adaptive high and low beam	<input type="radio"/> (USD 294)
Automatic headlights	<input type="checkbox"/>
Height-adjustable headlights	<input type="checkbox"/>
Headlight Delay Off	<input type="checkbox"/>
Lighting features	<input type="radio"/> Matrix (USD 1,176)
Turn headlights	<input type="radio"/>
Headlight rain and fog mode	<input type="checkbox"/>

Exterior lighting (continued)

Headlight cleaning device	<input type="radio"/> (USD 1,176)
----------------------------------	-----------------------------------

Exterior mirrors

Exterior mirror function	<ul style="list-style-type: none">• Electric adjustment;• Electric folding;<input type="radio"/> Rearview mirror memory (USD 147);• Rearview mirror heating;• Reverse the car and turn down automatically;• Lock the car and fold automatically;<input type="radio"/> Automatic anti-glare (USD 118)
---------------------------------	--

Appearance/anti-theft

Rim material	<ul style="list-style-type: none">• Aluminum alloy
Electric trunk	<ul style="list-style-type: none">•
Electronic engine immobilizer	<ul style="list-style-type: none">•
Central locking system in the car	<ul style="list-style-type: none">•
Key Type	<ul style="list-style-type: none">• Remote key
Keyless start system	<ul style="list-style-type: none">•
Keyless entry function	<input type="radio"/> Full vehicle (USD 588)
Hands-free Trunk	<input type="radio"/>
Electric trunk position memory	<ul style="list-style-type: none">•
Roof rack	<ul style="list-style-type: none">•
Active closed grille	<ul style="list-style-type: none">•
Side pedals	<input type="radio"/> Fixed (USD 515)

Skylight/Glass

Sunroof Type	<ul style="list-style-type: none">• Openable panoramic sunroof
Front/rear electric windows	Front <input type="checkbox"/> /Rear <input type="checkbox"/>
One-touch window lifting function	<ul style="list-style-type: none">• Full vehicle
Window anti-pinch function	<ul style="list-style-type: none">•
Car makeup mirror	<ul style="list-style-type: none">• Main driver's lamp;• co-pilot's lamp
Rear wiper	<ul style="list-style-type: none">•
Rain sensor wiper function	<ul style="list-style-type: none">• Rainfall-sensing
Rear side window sunshades	<input type="radio"/> Manual (USD 515)

Interior and exterior color

Interior and exterior color (continued)

Exterior Color	Legendary Black #101010 Matador Red #69091E Rhythmic Blue #143250 Sohu Brown #50463C Tanggula White #E9E9E9 Sky Cloud Gray #646464 Interstellar Blue #053250 ibis white #F7F6F1
Interior Color	Black: #000000; Black/Alaskan Red: #000000/#821E22; Black/Occapi Brown: #000000/#966446; Black/Rock Gray: #000000/#BCBCBC

Steering wheel/interior mirror

Steering Wheel Material	<ul style="list-style-type: none">• Leather
Steering wheel position adjustment	<ul style="list-style-type: none">• Manual up and down front and rear adjustment
Multi-function steering wheel	<ul style="list-style-type: none">•
Heated Steering Wheel	○(USD 147)
Steering wheel memory	-
Trip computer display screen	<ul style="list-style-type: none">• Color
Full LCD instrument panel	<ul style="list-style-type: none">•
LCD instrument size	<ul style="list-style-type: none">• 12.3 inches
Interior rearview mirror function	<ul style="list-style-type: none">• Manual anti-glare; ○ Automatic anti-glare (USD 221)
Gear shifting	<ul style="list-style-type: none">• Electronic gear shift
Steering Wheel Shift Paddles	<ul style="list-style-type: none">•

Intelligent configuration

Connected Car Services	<ul style="list-style-type: none">•
OTA Updates	-
4G/5G Network	•4G
Mobile APP remote function	<ul style="list-style-type: none">•
Wi-Fi hotspots	<ul style="list-style-type: none">•

Driving Control

Driving mode switch	<ul style="list-style-type: none">• Sport; • Standard/Comfort; • Off-Road; • Custom/Personalized
Automatic parking	<ul style="list-style-type: none">•
Steep slope descent	<ul style="list-style-type: none">•
Hill start assist	<ul style="list-style-type: none">•

Driving Control (continued)

Engine start-stop technology	•
-------------------------------------	---

Driving Hardware

Front/rear parking radar	Front •/Rear •
Driving Assistance Camera System	• Reversing image; ○ 360-degree panoramic image (USD 544)
Number of cameras	• 1 ○4 pieces
Number of ultrasonic radars	• 8; ○ 12

In-car charging

Multimedia/charging port	•USB;•Type-C
Number of USB/Type-C ports	• 2 in the front row/2 in the back row
Luggage compartment 12V power socket	•

"●" = Standard equipment

"_" = Not available

"○" = Optional equipment.

Note: These are Chinese market vehicles. Warranty coverage is not available outside of China.