

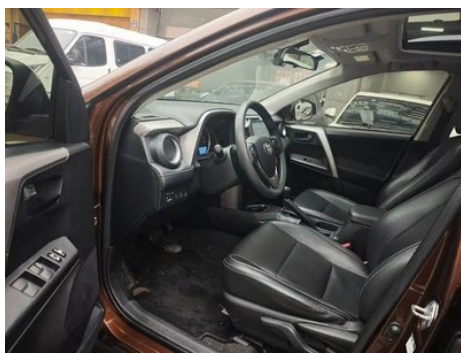
Vehicle Detail Report

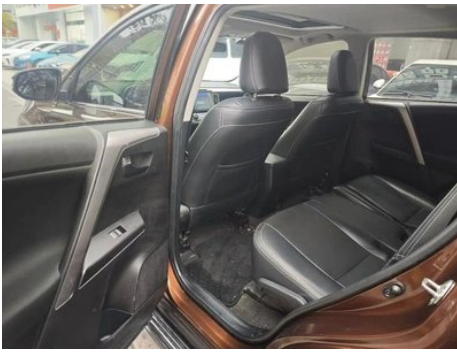
RAV4 Rong Fang 2019 2.0L CVT Two-Drive
Pioneer Edition country V

Basic Information

Brand	Toyota
Mileage	82,900 km
Color	Coffee color
First Registration	2018-03-01
Transfer Count	0

Vehicle Images





Vehicle Condition

1. Left rocker panel, Outer side deformation. 2. Right rocker panel, Outer side deformation. 3. Inner side of left B-pillar, Non-accident-related deformation. 4. Spare wheel well, Dust and sand, Water marks. 5. Left rear fender, Paint repair, Bodywork repair.

Configuration Information

Model Information

Model Name	RAV4 Rong Fang 2019 2.0L CVT Two-Drive Pioneer Edition country V
Launch Date	2018.09

Basic parameters

Vehicle Class	Compact SUV
Energy Type	Gasoline
Maximum Power (kW)	111
Maximum Torque (N·m)	192
Transmission	CVT continuously variable transmission (simulates 8 speeds)
Body Type	SUV
Engine	2.0L 151 horsepower L4
Dimensions (L×W×H) (mm)	4600*1845*1690
Official 0-100 km/h Acceleration (s)	-
Top Speed (km/h)	175
Curb Weight (kg)	1530
Maximum Gross Weight (kg)	-
NEDC Combined Fuel Consumption (L/100km)	6.4

engine

Engine Model	6ZR-FAE
Displacement (mL)	1987
Displacement (L)	2.0

engine (continued)

Induction Type	Natural aspiration
Cylinder Arrangement	L
Number of Cylinders	4
Valves per Cylinder	4
Compression Ratio	10.5
Valve Train	DOHC
Bore (mm)	80.5
Stroke (mm)	97.6
Maximum Power (PS)	151
Max Power Speed (rpm)	6200
Max Torque Speed (rpm)	3800
Maximum net power (kW)	-
Fuel Grade	92.
Fuel Delivery System	Multi-point EFI
Cylinder Head Material	Aluminum alloy
Cylinder Block Material	Aluminum alloy
Engine-specific technologies	VVT-i

Screen/System

Bluetooth/In-car Phone	-
In-car CD/DVD Player	• Single disc CD

Body

Length (mm)	4600
Width (mm)	1845
Height (mm)	1690
Wheelbase (mm)	2660
Front Track (mm)	1570
Rear Track (mm)	1570
Ground Clearance (Fully Loaded) (mm)	193
Door Opening Type	-
Number of Doors	5
Number of Seats	5
Fuel Tank Capacity (L)	60

Body (continued)

Trunk volume (L)	1142
Drag Coefficient (Cd)	-

Gearbox

Abbreviation	CVT continuously variable transmission (simulates 8 speeds)
Number of Gears	8
Transmission Type	Continuously Variable Transmission (CVT)

Chassis steering

Drive Type	Front-engine, Front-wheel drive (FF)
Front Suspension Type	MacPherson independent suspension
Rear Suspension Type	Double wishbone independent suspension
Power Steering Type	Electric power assistance
Vehicle structure	bearing type

Seat Configuration

Seat Material	<ul style="list-style-type: none">Fabric
Main seat adjustment	<ul style="list-style-type: none">Front and rear adjustment;Backrest adjustment;Height adjustment (2-way)
Co-seat adjustment method	<ul style="list-style-type: none">Front and rear adjustment;Backrest adjustment
Electric adjustment of driver's seat and passenger seat	-
Front passenger seat rear adjustable buttons	-
Second row seat adjustment	<ul style="list-style-type: none">Backrest adjustment
Rear seat folding	<ul style="list-style-type: none">Proportional down
Front/rear center armrest	Front •/Rear •
Rear cup holder	<ul style="list-style-type: none">

Active safety

Anti-lock Braking System (ABS)	<ul style="list-style-type: none">
Electronic Brakeforce Distribution (EBD/CBC)	<ul style="list-style-type: none">
Brake Assist System (EBA/BAS/BA)	<ul style="list-style-type: none">

Active safety (continued)

Traction Control System (ASR/TCS/TRC)	•
Electronic Stability Control (ESC/ESP/DSC)	•
Seat Belt Reminder	• Front row
ISOFIX Child Seat Anchors	•
Lane Departure Warning System (LDWS)	-
Autonomous Emergency Braking (AEB)	-
Driver Fatigue Detection	-

Air conditioning/refrigerator

Air conditioning temperature control method	• Automatic air conditioning
Rear Independent Climate Control	-
Rear seat air vents	-
Temperature zone control	•
Car air purifier	-
In-cabin PM2.5 Filter	•

Passive safety

Driver/passenger airbag	Main •/Deputy •
Front/rear side airbags	Front •/Rear-
Front/rear head airbags (curtain airbags)	Front •/Rear •

Wheel brake

Front Brake Type	Ventilation disc
Rear Brake Type	Disc
Parking brake type	handbrake
Front Tire Size	225/65 R17
Rear Tire Size	225/65 R17
Spare Tire Size	Full size

Audio/Interior Lighting

Number of speakers	• 4 speakers
---------------------------	--------------

Driving functions

Navigation traffic information display	-
---	---

Driving functions (continued)

Lane assist	-
Lane Keeping Assist System	-
Cruise control system	• Cruise control
Satellite navigation system	-
Parking Assist	-

Exterior lighting

Low beam light source	• Halogen
High beam light source	• Halogen
LED daytime running lights	-
Adaptive high and low beam	-
Automatic headlights	-
Front fog lights	• Halogen
Height-adjustable headlights	•
Headlight Delay Off	-

Exterior mirrors

Exterior mirror function	• Electric adjustment
---------------------------------	-----------------------

Appearance/anti-theft

Rim material	• Aluminum alloy
Electric trunk	-
Electronic engine immobilizer	•
Central locking system in the car	•
Key Type	• Remote key
Keyless start system	-

Skylight/Glass

Sunroof Type	• Electric sunroof
Front/rear electric windows	Front •/Rear •
One-touch window lifting function	• Driving position
Window anti-pinch function	•

Skylight/Glass (continued)

Car makeup mirror	<ul style="list-style-type: none">• Main driver's lamp; • co-pilot's lamp
Rear wiper	<ul style="list-style-type: none">•

Interior and exterior color

Exterior Color	Pearl white:#F0F4F5; Classic black:#000000; Technology blue:#264863; Cool gray:#81786F; Mysterious brown:#413635; Fashion red:#44282C
Interior Color	Black:#3E4146; Black/Beige:#3E4146/#C9A782

Steering wheel/interior mirror

Steering Wheel Material	<ul style="list-style-type: none">• Plastic
Steering wheel position adjustment	<ul style="list-style-type: none">• Manual up and down front and rear adjustment
Multi-function steering wheel	<ul style="list-style-type: none">•
Heated Steering Wheel	-
Steering wheel memory	-
Full LCD instrument panel	-
Interior rearview mirror function	<ul style="list-style-type: none">• Manual anti-glare

Intelligent configuration

Connected Car Services	-
OTA Updates	-

Driving Control

Driving mode switch	<ul style="list-style-type: none">• Movement; • Economy
Automatic parking	-
Hill start assist	<ul style="list-style-type: none">•
Engine start-stop technology	<ul style="list-style-type: none">•

Driving Hardware

Front/rear parking radar	-
---------------------------------	---

In-car charging

Multimedia/charging port	<ul style="list-style-type: none">•USB;•AUX
Number of USB/Type-C ports	<ul style="list-style-type: none">• 1 in the front row

"●" = Standard equipment

"□" = Not available

"○" = Optional equipment.

Note: These are Chinese market vehicles. Warranty coverage is not available outside of China.