

Vehicle Detail Report

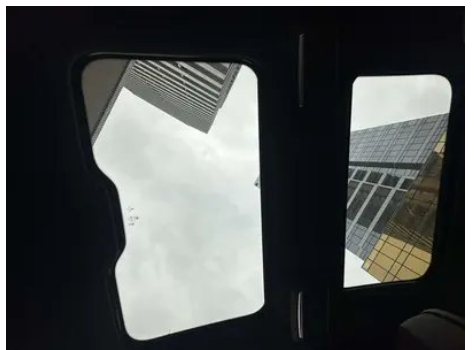
BMW 7 Series 2021 730Li M Sports suit

Basic Information

| | |
|--------------------|------------|
| Brand | BMW |
| Mileage | 55,000 km |
| Color | Black |
| First Registration | 2022-05-01 |
| Transfer Count | 2 |

Vehicle Images







Vehicle Condition

1. Right rocker panel, Inner-side deformation. 2. Driver's seat rails and frame, Signs of removal. 3. Front passenger seat rails and frame, Signs of removal. 4. Hood, Paint repair, Signs of removal. 5. Front bumper, Paint repair. 6. Rear bumper, Scratch damage. 7. Left front door, Deformation. 8. Right front door, Paint repair, Body panel repair. 9. Left rear door, Scratch. 10. Right front fender, Paint repair, Body panel repair. 11. Left rear quarter panel, Scrape, Deformation. 12. Driver's seat, Signs of removal. 13. Front passenger seat, Signs of removal.

Configuration Information

Model Information

| | |
|--------------------|---------------------------------------|
| Model Name | BMW 7 Series 2021 730Li M Sports suit |
| Launch Date | 2021.08 |

Basic parameters

| | |
|---|---------------------------|
| Vehicle Class | Large vehicle |
| Energy Type | Gasoline |
| Maximum Power (kW) | 195 |
| Maximum Torque (N·m) | 400 |
| Transmission | 8-gear manual integration |
| Body Type | Sedan |
| Engine | 2.0T 265 horsepower L4 |
| Dimensions (L×W×H) (mm) | 5273*1902*1498 |
| Official 0-100 km/h Acceleration (s) | 6.3 |
| Top Speed (km/h) | 250 |
| Curb Weight (kg) | 1898 |
| Maximum Gross Weight (kg) | 2505 |
| NEDC Combined Fuel Consumption (L/100km) | 6.9 |
| WLTP Combined Fuel Consumption (L/100km) | 7.8 |

engine

engine (continued)

| | |
|--------------------------------|------------------|
| Engine Model | B48B20B |
| Displacement (mL) | 1998 |
| Displacement (L) | 2.0 |
| Induction Type | Turbocharging |
| Cylinder Arrangement | L |
| Number of Cylinders | 4 |
| Valves per Cylinder | 4 |
| Valve Train | DOHC |
| Maximum Power (PS) | 265 |
| Max Power Speed (rpm) | 5000-6500 |
| Max Torque Speed (rpm) | 1550-4500 |
| Maximum net power (kW) | 195 |
| Fuel Grade | 95. |
| Fuel Delivery System | Direct injection |
| Cylinder Head Material | Aluminum alloy |
| Cylinder Block Material | Aluminum alloy |
| Engine layout | Longitudinal |

Screen/System

| | |
|--|--|
| Central control color screen | <ul style="list-style-type: none">• Touch LCD screen |
| Infotainment Screen Size | <ul style="list-style-type: none">• 10.25 inches |
| Bluetooth/In-car Phone | <ul style="list-style-type: none">• |
| Smartphone Integration/ Mirroring | <ul style="list-style-type: none">• Apple CarPlay support |
| Voice recognition control system | <ul style="list-style-type: none">• Multimedia system;• Navigation;• Telephone |
| In-vehicle intelligent system | <ul style="list-style-type: none">• iDrive |
| Rear LCD screen | ○(USD 4,265) |
| Rear multimedia control | <ul style="list-style-type: none">• |
| Gesture Control | ○ |

Body

| | |
|--------------------|------|
| Length (mm) | 5273 |
| Width (mm) | 1902 |
| Height (mm) | 1498 |

Body (continued)

| | |
|-------------------------------|------------|
| Wheelbase (mm) | 3210 |
| Front Track (mm) | - |
| Rear Track (mm) | - |
| Door Opening Type | swing door |
| Number of Doors | 4 |
| Number of Seats | 5 |
| Fuel Tank Capacity (L) | 78 |
| Trunk volume (L) | - |
| Drag Coefficient (Cd) | - |

Gearbox

| | |
|--------------------------|--|
| Abbreviation | 8-gear manual integration |
| Number of Gears | 8 |
| Transmission Type | Automatic Transmission with Manual Mode (AT) |

Chassis steering

| | |
|------------------------------|--|
| Drive Type | Front-engine, Rear-wheel drive (FR) |
| Front Suspension Type | Double wishbone independent suspension |
| Rear Suspension Type | Multi-link independent suspension |
| Power Steering Type | Electric power assistance |
| Vehicle structure | bearing type |

Seat Configuration

| | |
|--|--|
| Seat Material | • Leather |
| Main seat adjustment | • Front-to-back adjustment; • Backrest adjustment; • Height adjustment (4-way); • Shoulder adjustment; • Leg rest adjustment; • Lumbar support (4-way) |
| Co-seat adjustment method | • Front-to-back adjustment; • Backrest adjustment; • Height adjustment (4-way); • Shoulder adjustment; • Leg rest adjustment; • Lumbar support (4-way) |
| Electric adjustment of driver's seat and passenger seat | Main •/Deputy • |
| Front seat functions | • Heating; ○ Ventilation (USD 1,176) |
| Electric seat memory function | • Driver's seat; • Passenger seat; • Rear seats |

Seat Configuration (continued)

| | |
|---|---|
| Front passenger seat rear adjustable buttons | • |
| Second row seat adjustment | • Front and rear adjustment; • Backrest adjustment; • Height adjustment; • Lumbar adjustment; • Shoulder adjustment |
| Front/rear center armrest | Front •/Rear • |
| Rear cup holder | • |
| Second row seat functions | • Heating; ○ Ventilation (USD 1,176) |
| Second row seats electrically adjustable | • |

Active safety

| | |
|---|-------------------------|
| Anti-lock Braking System (ABS) | • |
| Electronic Brakeforce Distribution (EBD/CBC) | • |
| Brake Assist System (EBA/BAS/BA) | • |
| Traction Control System (ASR/TCS/TRC) | • |
| Electronic Stability Control (ESC/ESP/DSC) | • |
| Tire Pressure Monitoring System (TPMS) | • Tire pressure display |
| Seat Belt Reminder | • Front row |
| ISOFIX Child Seat Anchors | • |
| Lane Departure Warning System (LDWS) | ○ |
| Autonomous Emergency Braking (AEB) | • |
| Driver Fatigue Detection | • |
| Forward Collision Warning (FCW) | • |
| Emergency Call System (eCall) | • |
| Built-in Dashcam | ○ |

Air conditioning/refrigerator

| | |
|--|------------------------------|
| Air conditioning temperature control method | • Automatic air conditioning |
|--|------------------------------|

Air conditioning/refrigerator (continued)

| | |
|---|---|
| Rear Independent Climate Control | • |
| Rear seat air vents | • |
| Temperature zone control | • |
| Car air purifier | - |
| In-cabin PM2.5 Filter | • |
| Car fragrance device | ○ |

Passive safety

| | |
|--|-----------------|
| Driver/passenger airbag | Main •/Deputy • |
| Front/rear side airbags | Front •/Rear- |
| Front/rear head airbags (curtain airbags) | Front •/Rear • |
| Run-flat tires | • |

Wheel brake

| | |
|---------------------------|--------------------|
| Front Brake Type | Ventilation disc |
| Rear Brake Type | Ventilation disc |
| Parking brake type | Electronic Parking |
| Front Tire Size | 245/45 R19 |
| Rear Tire Size | 275/40 R19 |
| Spare Tire Size | None |

Audio/Interior Lighting

| | |
|----------------------------------|-------------------------------|
| Speaker Brand Name | • Harman/Kardon Harman Kardon |
| Number of speakers | • ≥ 12 horns |
| Interior ambient lighting | • 11 colors |
| Touch reading light | • |

Driving functions

| | |
|---|--|
| Navigation traffic information display | • |
| Lane assist | ○ |
| Lane Keeping Assist System | - |
| Cruise control system | • Constant speed cruise; ○ Adaptive cruise (USD 2,206) |
| Satellite navigation system | • |
| Rear Cross Traffic Alert | ○ |

Driving functions (continued)

| | |
|--------------------------------------|------------|
| Road traffic sign recognition | ○ |
| Remote Parking | ○(USD 588) |
| Tracking reverse | • |
| Parking Assist | • |

Exterior lighting

| | |
|-------------------------------------|---------------------------|
| Low beam light source | •LED |
| High beam light source | • LED;○ Laser (USD 2,353) |
| LED daytime running lights | • |
| Adaptive high and low beam | • |
| Automatic headlights | • |
| Height-adjustable headlights | • |
| Headlight Delay Off | • |
| Turn headlights | • |
| Turn signal lamp | • |

Exterior mirrors

| | |
|---------------------------------|---|
| Exterior mirror function | • Electric adjustment; • Electric folding; • Rearview mirror memory; • Rearview mirror heating; • Automatic downturning when reversing; • Automatic folding when locked; • Automatic anti-glare |
|---------------------------------|---|

Appearance/anti-theft

| | |
|--|-----------------------|
| Rim material | • Aluminum alloy |
| Electric trunk | • |
| Electronic engine immobilizer | • |
| Central locking system in the car | • |
| Key Type | • Touchscreen LCD key |
| Keyless start system | • |
| Keyless entry function | • Full vehicle |
| Appearance Kit | • Sports style |
| Hands-free Trunk | • |
| Remote start function | • |

Appearance/anti-theft (continued)

| | |
|------------------------------|----------------|
| Active closed grille | • |
| Electric door closing | • Full vehicle |

Skylight/Glass

| | |
|--|---|
| Sunroof Type | • Sectional electric sunroof |
| Front/rear electric windows | Front •/Rear • |
| One-touch window lifting function | • Full vehicle |
| Window anti-pinch function | • |
| Rear windshield sunshade | • |
| Car makeup mirror | • Driver's side ambient light; • Passenger-side ambient light; • Rear-row ambient light |
| Rear wiper | - |
| Rain sensor wiper function | • Rainfall-sensing |
| Rear side window sunshades | • Electric |
| Starry skylight | ○(USD 1,176) |

Interior and exterior color

| | |
|-----------------------|--|
| Exterior Color | Gem Green #252425 Carbon black #0F1319 Donington Grey #AAA8A4 Ore White #E7E7E7 bernina gray #49484E |
| Interior Color | Black/brown:#000000/#C8916E; Black:#000000; Black/cognac:#000000/#E48233; Black/Canberra Beige:#000000/#EBD3B9; Black/Mocha:#000000/#423932; Black/Ivory:#000000/#FFFFFF; Black/Zagora Desert Rice:#000000/#855A2F; Dark Coffee Canberra Beige:#EBD3B9/#C8916E |

Steering wheel/interior mirror

| | |
|---|--|
| Steering Wheel Material | • Leather |
| Steering wheel position adjustment | • Electric up and down front and rear adjustment |
| Multi-function steering wheel | • |
| Heated Steering Wheel | - |
| Steering wheel memory | • |

Steering wheel/interior mirror (continued)

| | |
|--|---|
| Trip computer display screen | <ul style="list-style-type: none">• Color |
| Full LCD instrument panel | <ul style="list-style-type: none">• |
| LCD instrument size | <ul style="list-style-type: none">• 12.3 inches |
| Interior rearview mirror function | <ul style="list-style-type: none">• Automatic anti-glare |
| Gear shifting | <ul style="list-style-type: none">• Electronic gear shift |
| HUD Head Up Digital Display | ○(USD 2,059) |
| Steering Wheel Shift Paddles | <ul style="list-style-type: none">• |

Intelligent configuration

| | |
|-----------------------------------|---|
| Connected Car Services | - |
| OTA Updates | - |
| Mobile APP remote function | <ul style="list-style-type: none">• Vehicle start;• Vehicle status check/diagnostics;• Vehicle location / find my car |

Driving Control

| | |
|-------------------------------------|---|
| Driving mode switch | <ul style="list-style-type: none">• Sport;• Economy;• Standard/Comfort;• Customization/Personalization |
| Automatic parking | <ul style="list-style-type: none">• |
| Hill start assist | <ul style="list-style-type: none">• |
| Energy recovery system | <ul style="list-style-type: none">• |
| Variable suspension function | <ul style="list-style-type: none">• Suspension damping adjustment;• Suspension height adjustment |
| Air Suspension | <ul style="list-style-type: none">• |
| Engine start-stop technology | <ul style="list-style-type: none">• |

Driving Hardware

| | |
|---|---|
| Front/rear parking radar | Front •/Rear • |
| Driving Assistance Camera System | <ul style="list-style-type: none">• Reversing image;○ 360-degree panoramic image |

In-car charging

| | |
|--|--|
| Multimedia/charging port | <ul style="list-style-type: none">•USB;○HDMI;•Type-C |
| Number of USB/Type-C ports | <ul style="list-style-type: none">• 2 in the front row/2 in the back row |
| Mobile phone wireless charging function | ○ Front row |

Optional Package

Optional Package (continued)

| Optional Package | |
|------------------|--|
| | Comfort package (USD 1,324; Including: advanced fragrance system, mobile phone wireless charging, gesture control system); Innovative package (USD 2,206; Including: BMW driving recorder, automatic parking assist system Plus, driving safety assist system) |

"●" = Standard equipment

"_" = Not available

"○" = Optional equipment.

Note: These are Chinese market vehicles. Warranty coverage is not available outside of China.