

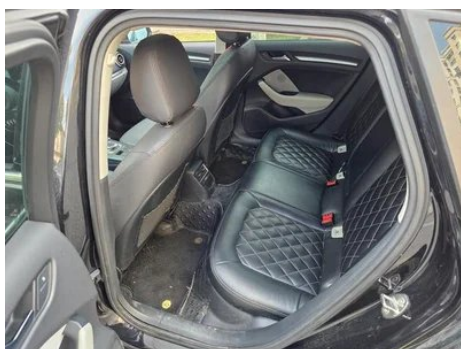
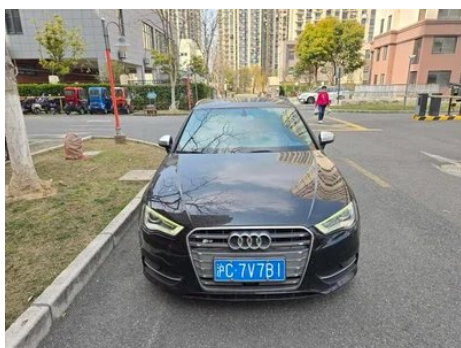
# Vehicle Detail Report

## Audi A3 2014 Sportback 35 TFSI Self-motivated

### Basic Information

Brand	Audi
Mileage	143,200 km
Color	Black
First Registration	2015-04-01
Transfer Count	0

### Vehicle Images





## Vehicle Condition

1. Left upper side rail, Paint repair. 2. Left rocker panel, Paint repair. 3. Rear body panel, Bodywork repair. 4. Left rear fender, Paint repair, Bodywork repair.

## Configuration Information

### Model Information

<b>Model Name</b>	Audi A3 2014 Sportback 35 TFSI Self-motivated
<b>Launch Date</b>	2014.03

### Basic parameters

<b>Vehicle Class</b>	compact car
<b>Energy Type</b>	Gasoline
<b>Maximum Power (kW)</b>	110
<b>Maximum Torque (N·m)</b>	250
<b>Transmission</b>	7-speed dry dual clutch
<b>Body Type</b>	Hatchback
<b>Engine</b>	1.4L 150 hp L4
<b>Dimensions (L×W×H) (mm)</b>	4319*1785*1441
<b>Official 0-100 km/h Acceleration (s)</b>	8.4
<b>Top Speed (km/h)</b>	213
<b>Curb Weight (kg)</b>	1340
<b>Maximum Gross Weight (kg)</b>	-
<b>NEDC Combined Fuel Consumption (L/100km)</b>	5.4

### engine

<b>Engine Model</b>	-
<b>Displacement (mL)</b>	1395
<b>Displacement (L)</b>	1.4
<b>Induction Type</b>	Turbocharging

## engine (continued)

<b>Cylinder Arrangement</b>	L
<b>Number of Cylinders</b>	4
<b>Valves per Cylinder</b>	4
<b>Valve Train</b>	DOHC
<b>Maximum Power (PS)</b>	150
<b>Max Power Speed (rpm)</b>	5000-6000
<b>Max Torque Speed (rpm)</b>	1750-3000
<b>Maximum net power (kW)</b>	-
<b>Fuel Grade</b>	95.
<b>Fuel Delivery System</b>	Direct injection
<b>Cylinder Head Material</b>	Aluminum alloy
<b>Cylinder Block Material</b>	Aluminum alloy

## Screen/System

<b>Central control color screen</b>	<ul style="list-style-type: none"><li>•</li></ul>
<b>Bluetooth/In-car Phone</b>	<input type="radio"/>
<b>In-car CD/DVD Player</b>	<ul style="list-style-type: none"><li>• Single disc CD</li></ul>

## Body

<b>Length (mm)</b>	4319
<b>Width (mm)</b>	1785
<b>Height (mm)</b>	1441
<b>Wheelbase (mm)</b>	2629
<b>Front Track (mm)</b>	-
<b>Rear Track (mm)</b>	-
<b>Door Opening Type</b>	-
<b>Number of Doors</b>	5
<b>Number of Seats</b>	5
<b>Fuel Tank Capacity (L)</b>	50
<b>Trunk volume (L)</b>	380-1220
<b>Drag Coefficient (Cd)</b>	-

## Gearbox

<b>Abbreviation</b>	7-speed dry dual clutch
<b>Number of Gears</b>	7
<b>Transmission Type</b>	Dry Dual-Clutch Transmission (DCT)

## Chassis steering

## Chassis steering (continued)

<b>Drive Type</b>	Front-engine, Front-wheel drive (FF)
<b>Front Suspension Type</b>	MacPherson independent suspension
<b>Rear Suspension Type</b>	Multi-link independent suspension
<b>Power Steering Type</b>	Electric power assistance
<b>Vehicle structure</b>	bearing type

## Seat Configuration

<b>Seat Material</b>	•Fabric; ○Genuine Leather (USD 1,324)
<b>Main seat adjustment</b>	• Front and rear adjustment; • Backrest adjustment; • Height adjustment (2-way);○ Height adjustment (4-way)
<b>Co-seat adjustment method</b>	• Front and rear adjustment; • Backrest adjustment
<b>Electric adjustment of driver's seat and passenger seat</b>	Main ○/Secondary ○
<b>Front seat functions</b>	○ Heating (USD 294)
<b>Front passenger seat rear adjustable buttons</b>	-
<b>Rear seat folding</b>	• Proportional down
<b>Front/rear center armrest</b>	Front •/Rear •
<b>Rear cup holder</b>	•
<b>Sports style seats</b>	○

## Active safety

<b>Anti-lock Braking System (ABS)</b>	•
<b>Electronic Brakeforce Distribution (EBD/CBC)</b>	•
<b>Brake Assist System (EBA/BAS/BA)</b>	•
<b>Traction Control System (ASR/TCS/TRC)</b>	•
<b>Electronic Stability Control (ESC/ESP/DSC)</b>	•
<b>Tire Pressure Monitoring System (TPMS)</b>	○
<b>Seat Belt Reminder</b>	•
<b>ISOFIX Child Seat Anchors</b>	•

## Active safety (continued)

<b>Lane Departure Warning System (LDWS)</b>	○
<b>Autonomous Emergency Braking (AEB)</b>	○
<b>Driver Fatigue Detection</b>	-

## Air conditioning/refrigerator

<b>Air conditioning temperature control method</b>	• Manual air conditioning; ○ Automatic air conditioning (USD 441)
<b>Rear Independent Climate Control</b>	-
<b>Rear seat air vents</b>	-
<b>Temperature zone control</b>	○
<b>Car air purifier</b>	-
<b>In-cabin PM2.5 Filter</b>	-

## Passive safety

<b>Driver/passenger airbag</b>	Main •/Deputy •
<b>Front/rear side airbags</b>	Front •/Rear ○ Rear side airbags (USD 265)
<b>Front/rear head airbags (curtain airbags)</b>	Front •/Rear-
<b>Knee airbag</b>	• Main driver knee airbag

## Wheel brake

<b>Front Brake Type</b>	Ventilation disc
<b>Rear Brake Type</b>	Disc
<b>Parking brake type</b>	Electronic Parking
<b>Front Tire Size</b>	205/55 R16
<b>Rear Tire Size</b>	205/55 R16
<b>Spare Tire Size</b>	Not full-size

## Audio/Interior Lighting

<b>Speaker Brand Name</b>	○Bang & Olufsen(USD 882)
<b>Number of speakers</b>	○ ≥ 12 horns; • 8-9 horns

## Driving functions

<b>Navigation traffic information display</b>	-
<b>Lane assist</b>	○
<b>Lane Keeping Assist System</b>	-

## Driving functions (continued)

<b>Cruise control system</b>	<input type="radio"/> Cruise control; <input type="radio"/> Adaptive cruise control
<b>Satellite navigation system</b>	<input type="radio"/>
<b>Parking Assist</b>	<input type="radio"/>

## Exterior lighting

<b>Low beam light source</b>	• Halogen; <input type="radio"/> Xenon (USD 882)
<b>High beam light source</b>	• Halogen; <input type="radio"/> Xenon (USD 882)
<b>LED daytime running lights</b>	<input type="radio"/>
<b>Adaptive high and low beam</b>	<input type="radio"/>
<b>Automatic headlights</b>	<input type="radio"/>
<b>Front fog lights</b>	•
<b>Height-adjustable headlights</b>	•
<b>Headlight Delay Off</b>	-
<b>Turn headlights</b>	<input type="radio"/>
<b>Headlight cleaning device</b>	<input type="radio"/>

## Exterior mirrors

<b>Exterior mirror function</b>	• Electric adjustment; <input type="radio"/> Electric folding; <input type="radio"/> Rearview mirror heating; <input type="radio"/> Automatic anti-glare
---------------------------------	--

## Appearance/anti-theft

<b>Rim material</b>	• Aluminum alloy
<b>Electric trunk</b>	-
<b>Electronic engine immobilizer</b>	•
<b>Central locking system in the car</b>	•
<b>Key Type</b>	• Remote key
<b>Keyless start system</b>	<input type="radio"/>
<b>Keyless entry function</b>	<input type="radio"/>

## Skylight/Glass

<b>Sunroof Type</b>	<input type="radio"/> Electric sunroof
<b>Front/rear electric windows</b>	Front •/Rear •
<b>Window anti-pinch function</b>	•

## Skylight/Glass (continued)

<b>Car makeup mirror</b>	•
<b>Rear wiper</b>	•
<b>Rain sensor wiper function</b>	○

## Interior and exterior color

<b>Exterior Color</b>	Misano Red:#D91624, Glacier White:#F6F6F6, Phantom, Black:#070A01; Samoa Orange:#D37201; Shinaz Red:#59222B, Crystal, Silver:#C7C8CA, Amalfi, White:#FFFFFF, Beluga Brown:#482807, Monsoon ash:#374A4A; Lotus ash:#5D6159; Titanium rice:#462807; Skobar blue:#0E3D69; Dazzling red:#D91624
<b>Interior Color</b>	Black:#000000; Black/titanium gray:#000000/#A8AA9; Black/capri orange:#000000/#DE7838; Black/kaishi beige:#000000/#DBCBA7; Black/chestnut brown:#000000/#544540

## Steering wheel/interior mirror

<b>Steering Wheel Material</b>	• Cortex
<b>Steering wheel position adjustment</b>	• Manual up and down front and rear adjustment
<b>Multi-function steering wheel</b>	○
<b>Heated Steering Wheel</b>	-
<b>Steering wheel memory</b>	-
<b>Trip computer display screen</b>	•
<b>Full LCD instrument panel</b>	-
<b>Interior rearview mirror function</b>	○ Automatic anti-glare
<b>Steering Wheel Shift Paddles</b>	○

## Intelligent configuration

<b>Connected Car Services</b>	-
<b>OTA Updates</b>	-

## Driving Control

<b>Automatic parking</b>	•
--------------------------	---

## Driving Control (continued)

<b>Hill start assist</b>	•
<b>Engine start-stop technology</b>	•

## Driving Hardware

<b>Front/rear parking radar</b>	Front ○/Rear • Front radar (USD 441)
<b>Driving Assistance Camera System</b>	○ Reversing image

## In-car charging

<b>Multimedia/charging port</b>	•SD
---------------------------------	-----

## Optional Package

<b>Optional Package</b>	Automatic, Anti-glare endoscope and windshield wiper with light rain sensor (2000 yuan; Including: inner rearview mirror automatic anti-glare, automatic headlights, sensor wipers), Smart key (4000 yuan; Including: keyless entry, one-key start), Driver seat electric adjustment and lumbar support (4000 yuan; Including: electric adjustment of driver's seat and lumbar support), Xenon lamp package (6000 yuan; Including bi-xenon lamp, LED tail lamp, dynamic adjustment of headlight irradiation distance, LED daytime running lamp, headlight cleaning), Electric front seat adjustment and lumbar support (6000 yuan; including: front seat electric adjustment, lumbar support)
-------------------------	---

"●" = Standard equipment

"\_" = Not available

"○" = Optional equipment.

Note: These are Chinese market vehicles. Warranty coverage is not available outside of China.