

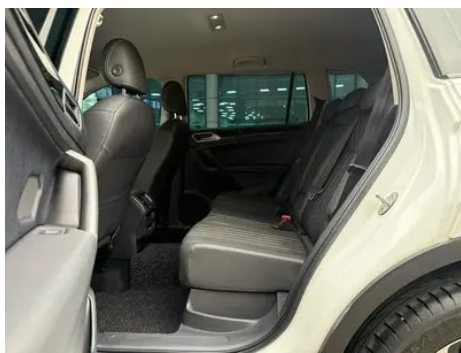
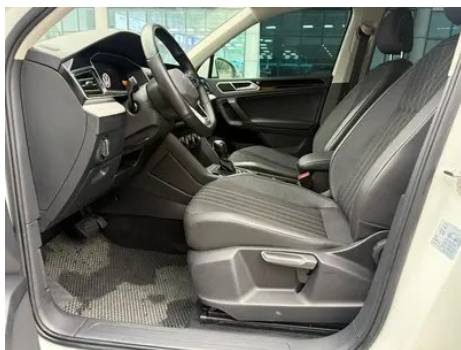
Vehicle Detail Report

Volkswagen Tiguan L 2022 330TSI Automatic two-wheel drive comfortable version

Basic Information

Brand	Volkswagen
Mileage	80,000 km
Color	White
First Registration	2022-09-01
Transfer Count	0

Vehicle Images





Vehicle Condition

1. Spare wheel well, Mud and sand residue, Water stains. 2. Driver's seat rails and frame, Corrosion. 3. Front passenger seat rails and frame, Corrosion.

Configuration Information

Model Information

Model Name	Volkswagen Tiguan L 2022 330TSI Automatic two-wheel drive comfortable version
Launch Date	2021.08

Basic parameters

Vehicle Class	Mid-size SUV
Energy Type	Gasoline
Maximum Power (kW)	137
Maximum Torque (N·m)	320
Transmission	7-speed wet dual-clutch
Body Type	SUV
Engine	2.0T 186 horsepower L4
Dimensions (L×W×H) (mm)	4733*1839*1673
Official 0-100 km/h Acceleration (s)	8.7
Top Speed (km/h)	200
Curb Weight (kg)	1665
Maximum Gross Weight (kg)	2135
NEDC Combined Fuel Consumption (L/100km)	6.6
WLTP Combined Fuel Consumption (L/100km)	7

engine

Engine Model	EA888-DPL
Displacement (mL)	1984

engine (continued)

Displacement (L)	2.0
Induction Type	Turbocharging
Cylinder Arrangement	L
Number of Cylinders	4
Valves per Cylinder	4
Valve Train	DOHC
Maximum Power (PS)	186
Max Power Speed (rpm)	4100-6000
Max Torque Speed (rpm)	1500-4000
Maximum net power (kW)	137
Fuel Grade	95.
Fuel Delivery System	Mixed injection
Cylinder Head Material	Aluminum alloy
Cylinder Block Material	Cast iron
Engine layout	Horizontal

Screen/System

Central control color screen	<ul style="list-style-type: none">• Touch LCD screen
Infotainment Screen Size	<ul style="list-style-type: none">• 8 inches
Bluetooth/In-car Phone	<ul style="list-style-type: none">•
Smartphone Integration/Mirroring	<ul style="list-style-type: none">• Apple CarPlay support;• Baidu CarLife support;• OEM smartphone integration/mirroring
Voice recognition control system	<ul style="list-style-type: none">• Multimedia system;• Telephone

Body

Length (mm)	4733
Width (mm)	1839
Height (mm)	1673
Wheelbase (mm)	2791
Front Track (mm)	1582
Rear Track (mm)	1572
Door Opening Type	swing door
Number of Doors	5
Number of Seats	5

Body (continued)

Fuel Tank Capacity (L)	60
Trunk volume (L)	495-1780
Drag Coefficient (Cd)	-
Approach Angle (°)	16
Departure Angle (°)	16

Gearbox

Abbreviation	7-speed wet dual-clutch
Number of Gears	7
Transmission Type	Wet Dual-Clutch Transmission (DCT)

Chassis steering

Drive Type	Front-engine, Front-wheel drive (FF)
Front Suspension Type	MacPherson independent suspension
Rear Suspension Type	Multi-link independent suspension
Power Steering Type	Electric power assistance
Vehicle structure	bearing type

Seat Configuration

Seat Material	<ul style="list-style-type: none">• Leather/fabric mix-and-match
Main seat adjustment	<ul style="list-style-type: none">• Front and rear adjustment;• Backrest adjustment;• Height adjustment (2-way);• Lumbar support (2-way)
Co-seat adjustment method	<ul style="list-style-type: none">• Front and rear adjustment;• Backrest adjustment;• Height adjustment (2-way);• Lumbar support (2-way)
Electric adjustment of driver's seat and passenger seat	-
Front passenger seat rear adjustable buttons	-
Second row seat adjustment	<ul style="list-style-type: none">• Backrest adjustment
Rear seat folding	<ul style="list-style-type: none">• Proportional down
Front/rear center armrest	Front •/Rear •
Rear cup holder	<ul style="list-style-type: none">•

Active safety

Anti-lock Braking System (ABS)	<ul style="list-style-type: none">•
---------------------------------------	---

Active safety (continued)

Electronic Brakeforce Distribution (EBD/CBC)	•
Brake Assist System (EBA/BAS/BA)	•
Traction Control System (ASR/TCS/TRC)	•
Electronic Stability Control (ESC/ESP/DSC)	•
Tire Pressure Monitoring System (TPMS)	• Tire pressure alarm
Seat Belt Reminder	• Front row
ISOFIX Child Seat Anchors	•
Lane Departure Warning System (LDWS)	-
Autonomous Emergency Braking (AEB)	•
Driver Fatigue Detection	-
Forward Collision Warning (FCW)	•

Air conditioning/refrigerator

Air conditioning temperature control method	• Manual air conditioning
Rear Independent Climate Control	-
Rear seat air vents	•
Temperature zone control	-
Car air purifier	-
In-cabin PM2.5 Filter	•

Passive safety

Driver/passenger airbag	Main •/Deputy •
Front/rear side airbags	Front •/Rear-
Front/rear head airbags (curtain airbags)	Front •/Rear •

Wheel brake

Front Brake Type	Ventilation disc
Rear Brake Type	Disc
Parking brake type	Electronic Parking
Front Tire Size	235/55 R18

Wheel brake (continued)

Rear Tire Size	235/55 R18
Spare Tire Size	Not full-size

Audio/Interior Lighting

Number of speakers	• 4 speakers
---------------------------	--------------

Driving functions

Navigation traffic information display	-
Lane assist	-
Lane Keeping Assist System	-
Cruise control system	• Cruise control
Satellite navigation system	-
Parking Assist	-

Exterior lighting

Low beam light source	•LED
High beam light source	•LED
LED daytime running lights	•
Adaptive high and low beam	-
Automatic headlights	•
Height-adjustable headlights	•
Headlight Delay Off	•
Headlight rain and fog mode	•

Exterior mirrors

Exterior mirror function	• Electric adjustment; • Mirror heating
---------------------------------	---

Appearance/anti-theft

Rim material	• Aluminum alloy
Electric trunk	-
Electronic engine immobilizer	•
Central locking system in the car	•
Key Type	• Remote key

Appearance/anti-theft (continued)

Keyless start system	<ul style="list-style-type: none">•
Keyless entry function	<ul style="list-style-type: none">• Front row
Roof rack	<ul style="list-style-type: none">•

Skylight/Glass

Front/rear electric windows	Front •/Rear •
One-touch window lifting function	<ul style="list-style-type: none">• Full vehicle
Window anti-pinch function	<ul style="list-style-type: none">•
Car makeup mirror	<ul style="list-style-type: none">• Main driving position;• First officer
Rear wiper	<ul style="list-style-type: none">•
Rain sensor wiper function	<ul style="list-style-type: none">• Rainfall-sensing

Interior and exterior color

Exterior Color	Aurora White #FFFFFF Icelandic Silver #9CABB2 superconducting red #CF0723 Pert Silver #ADB0B5 sky blue #4F7B99 Xuanwu Black #000000
Interior Color	Obsidian Black #000000

Steering wheel/interior mirror

Steering Wheel Material	<ul style="list-style-type: none">• Plastic
Steering wheel position adjustment	<ul style="list-style-type: none">• Manual up and down front and rear adjustment
Multi-function steering wheel	<ul style="list-style-type: none">•
Heated Steering Wheel	-
Steering wheel memory	-
Trip computer display screen	<ul style="list-style-type: none">• Color
Full LCD instrument panel	-
LCD instrument size	<ul style="list-style-type: none">• 8 inches
Interior rearview mirror function	<ul style="list-style-type: none">• Manual anti-glare
Gear shifting	<ul style="list-style-type: none">• Mechanical gear shift

Intelligent configuration

Connected Car Services	-
-------------------------------	---

Intelligent configuration (continued)

OTA Updates	-
--------------------	---

Driving Control

Driving mode switch	• Movement
Automatic parking	•
Hill start assist	•
Engine start-stop technology	•

Driving Hardware

Front/rear parking radar	Front-/Rear •
---------------------------------	---------------

In-car charging

Multimedia/charging port	•USB;•Type-C
Number of USB/Type-C ports	• 2 in the front row/2 in the back row
Luggage compartment 12V power socket	•

"●" = Standard equipment

"-" = Not available

"○" = Optional equipment.

Note: These are Chinese market vehicles. Warranty coverage is not available outside of China.