

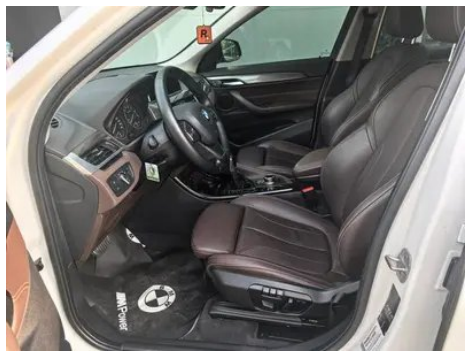
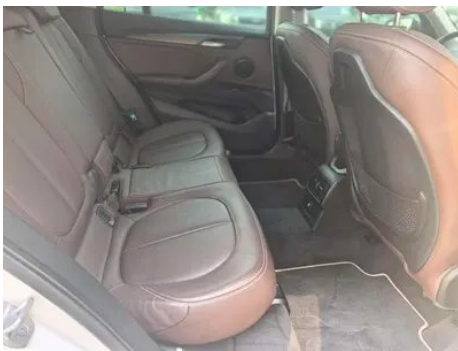
Vehicle Detail Report

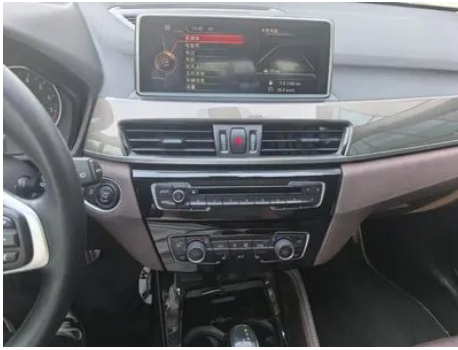
BMW X1 2018 sDrive20Li Leading Type

Basic Information

Brand	BMW
Mileage	109,000 km
Color	White
First Registration	2017-07-01
Transfer Count	0

Vehicle Images





Vehicle Condition

1. Inner side of left B-pillar, Non-accident-related deformation. 2. Inner side of right B-pillar, Non-accident-related deformation. 3. Left rear quarter panel, Paint repair.

Configuration Information

Model Information

Model Name	BMW X1 2018 sDrive20Li Leading Type
Launch Date	2017.07

Basic parameters

Vehicle Class	Compact SUV
Energy Type	Gasoline
Maximum Power (kW)	141

Basic parameters (continued)

Maximum Torque (N·m)	280
Transmission	8-gear manual integration
Body Type	SUV
Engine	2.0L 192 hp L4
Dimensions (L×W×H) (mm)	4565*1821*1624
Official 0-100 km/h Acceleration (s)	-
Top Speed (km/h)	-
Curb Weight (kg)	1607
Maximum Gross Weight (kg)	-
NEDC Combined Fuel Consumption (L/100km)	6.5
Measured 0-100 km/h Acceleration (s)	7.66
Measured 100-0 km/h Braking Distance (m)	39.7
Real-world Fuel Consumption (L/100km)	8.6

engine

Engine Model	-
Displacement (mL)	1998
Displacement (L)	2.0
Induction Type	Turbocharging
Cylinder Arrangement	L
Number of Cylinders	4
Valves per Cylinder	4
Valve Train	DOHC
Bore (mm)	82
Stroke (mm)	94.6
Maximum Power (PS)	192
Max Power Speed (rpm)	5000-6000
Max Torque Speed (rpm)	1250-4600
Maximum net power (kW)	-
Fuel Grade	95.

engine (continued)

Fuel Delivery System	Direct injection
Cylinder Head Material	Aluminum alloy
Cylinder Block Material	Aluminum alloy

Screen/System

Central control color screen	<ul style="list-style-type: none">•
Infotainment Screen Size	•6.5 inches; ○8.8 inches
Bluetooth/In-car Phone	<ul style="list-style-type: none">•
In-car CD/DVD Player	<ul style="list-style-type: none">• Single disc CD

Body

Length (mm)	4565
Width (mm)	1821
Height (mm)	1624
Wheelbase (mm)	2780
Front Track (mm)	1561
Rear Track (mm)	1562
Door Opening Type	-
Number of Doors	5
Number of Seats	5
Fuel Tank Capacity (L)	61
Trunk volume (L)	505
Drag Coefficient (Cd)	-

Gearbox

Abbreviation	8-gear manual integration
Number of Gears	8
Transmission Type	Automatic Transmission with Manual Mode (AT)

Chassis steering

Drive Type	Front-engine, Front-wheel drive (FF)
Front Suspension Type	MacPherson independent suspension
Rear Suspension Type	Multi-link independent suspension
Power Steering Type	Electric power assistance
Vehicle structure	bearing type

Seat Configuration

Seat Configuration (continued)

Seat Material	• Imitation leather
Main seat adjustment	• Front and rear adjustment; • Backrest adjustment; • Height adjustment (2-way); ○ Height adjustment (4-way)
Co-seat adjustment method	• Front and rear adjustment; • Backrest adjustment
Electric adjustment of driver's seat and passenger seat	Main •/Deputy •
Front seat functions	○ Heating (USD 441)
Electric seat memory function	•
Front passenger seat rear adjustable buttons	-
Second row seat adjustment	• Front and rear adjustment; • Backrest adjustment
Rear seat folding	• Proportional down
Front/rear center armrest	Front •/Rear •
Rear cup holder	•

Active safety

Anti-lock Braking System (ABS)	•
Electronic Brakeforce Distribution (EBD/CBC)	•
Brake Assist System (EBA/BAS/BA)	•
Traction Control System (ASR/TCS/TRC)	•
Electronic Stability Control (ESC/ESP/DSC)	•
Tire Pressure Monitoring System (TPMS)	•
Seat Belt Reminder	•
ISOFIX Child Seat Anchors	•
Lane Departure Warning System (LDWS)	○
Autonomous Emergency Braking (AEB)	-
Driver Fatigue Detection	-

Active safety (continued)

Emergency Call System (eCall)	•
--------------------------------------	---

Air conditioning/refrigerator

Air conditioning temperature control method	• Automatic air conditioning
Rear Independent Climate Control	-
Rear seat air vents	•
Temperature zone control	•
Car air purifier	-
In-cabin PM2.5 Filter	-

Passive safety

Driver/passenger airbag	Main •/Deputy •
Front/rear side airbags	Front •/Rear-
Front/rear head airbags (curtain airbags)	Front •/Rear •
Run-flat tires	•

Wheel brake

Front Brake Type	Ventilation disc
Rear Brake Type	Disc
Parking brake type	Electronic Parking
Front Tire Size	225/50 R18
Rear Tire Size	225/50 R18
Spare Tire Size	None

Audio/Interior Lighting

Speaker Brand Name	○ Harman/Kardon Harman Kardon (USD 676)
Number of speakers	○ ≥ 12 horns; • 8-9 horns
Interior ambient lighting	•

Driving functions

Navigation traffic information display	-
Lane assist	-
Lane Keeping Assist System	-
Cruise control system	○ Cruise control

Driving functions (continued)

Satellite navigation system	○
Parking Assist	○

Exterior lighting

Low beam light source	• LED
High beam light source	• LED
LED daytime running lights	•
Adaptive high and low beam	-
Automatic headlights	•
Front fog lights	•
Height-adjustable headlights	•
Headlight Delay Off	•

Exterior mirrors

Exterior mirror function	• Electric adjustment; • Electric folding; • Mirror memory function; • Heated mirrors; ○ Auto-dimming (USD 647)
---------------------------------	---

Appearance/anti-theft

Rim material	• Aluminum alloy
Electric trunk	•
Electronic engine immobilizer	•
Central locking system in the car	•
Key Type	• Remote key
Keyless start system	•
Keyless entry function	○
Hands-free Trunk	○
Roof rack	•

Skylight/Glass

Sunroof Type	• Panoramic sunroof
Front/rear electric windows	Front •/Rear •
One-touch window lifting function	• Full car

Skylight/Glass (continued)

Window anti-pinch function	•
Car makeup mirror	•
Rear wiper	•
Rain sensor wiper function	•

Interior and exterior color

Exterior Color	Mediterranean blue:#092A57; Valencia orange:#FF660E; Gemstone green:#242224; Cashmi silver:#C6C1B4; Ore white:#E7E7E7; Chestnut copper brown:#8A411B; Melbourne Red:#610303; Starlight Brown:#28160F; Whirlwind Brown:#573E35; Snow Mountain White:#FAFAFA
Interior Color	Black:#000000

Steering wheel/interior mirror

Steering Wheel Material	• Cortex
Steering wheel position adjustment	• Manual up and down front and rear adjustment
Multi-function steering wheel	•
Heated Steering Wheel	-
Steering wheel memory	-
Trip computer display screen	•
Full LCD instrument panel	-
Interior rearview mirror function	• Automatic anti-glare
HUD Head Up Digital Display	○

Intelligent configuration

Connected Car Services	○
OTA Updates	-

Driving Control

Driving mode switch	• Sport; • Economy; • Standard/ Comfort
Automatic parking	-
Hill start assist	•

Driving Control (continued)

Engine start-stop technology	•
-------------------------------------	---

Driving Hardware

Front/rear parking radar	Front ○/Rear •
Driving Assistance Camera System	• Reversing image

In-car charging

Multimedia/charging port	•USB;•AUX
Luggage compartment 12V power socket	•

"●" = Standard equipment

"-" = Not available

"○" = Optional equipment.

Note: These are Chinese market vehicles. Warranty coverage is not available outside of China.