

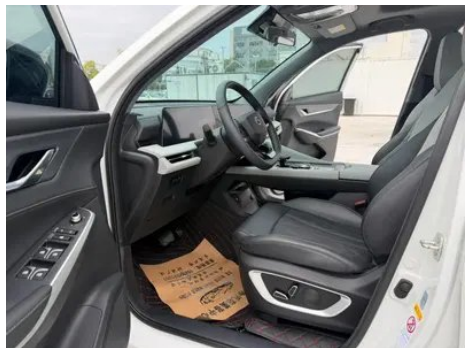
# Vehicle Detail Report

**Changan CS75 PLUS 2024 Third generation  
Champion Edition 1.5T Automatic intelligent  
driving type**

## Basic Information

Brand	Changan
Mileage	21,000 km
Color	White
First Registration	2024-07-01
Transfer Count	0

## Vehicle Images





## Vehicle Condition

1. Right rocker panel, Inner-side deformation.

## Configuration Information

### Model Information

<b>Model Name</b>	Changan CS75PLUS 2024 Third generation Champion Edition 1.5T Smart Driving and Strong Navigation Type
<b>Launch Date</b>	2024.03

### Basic parameters

<b>Vehicle Class</b>	Compact SUV
<b>Energy Type</b>	Gasoline
<b>Maximum Power (kW)</b>	138
<b>Maximum Torque (N·m)</b>	300
<b>Transmission</b>	8-gear manual integration
<b>Body Type</b>	SUV
<b>Engine</b>	1.5T 188 horsepower L4
<b>Dimensions (L×W×H) (mm)</b>	4710*1865*1710
<b>Official 0-100 km/h Acceleration (s)</b>	-
<b>Top Speed (km/h)</b>	190
<b>Curb Weight (kg)</b>	1575
<b>Maximum Gross Weight (kg)</b>	1950

## Basic parameters (continued)

<b>WLTP Combined Fuel Consumption (L/100km)</b>	6.96
---	------

## engine

<b>Engine Model</b>	JL473ZQ7
<b>Displacement (mL)</b>	1494
<b>Displacement (L)</b>	1.5
<b>Induction Type</b>	Turbocharging
<b>Cylinder Arrangement</b>	L
<b>Number of Cylinders</b>	4
<b>Valves per Cylinder</b>	4
<b>Valve Train</b>	DOHC
<b>Maximum Power (PS)</b>	188
<b>Max Power Speed (rpm)</b>	5500
<b>Max Torque Speed (rpm)</b>	1500-4000
<b>Maximum net power (kW)</b>	133
<b>Fuel Grade</b>	92.
<b>Fuel Delivery System</b>	Direct injection
<b>Cylinder Head Material</b>	Aluminum alloy
<b>Cylinder Block Material</b>	Aluminum alloy
<b>Engine layout</b>	Horizontal

## Screen/System

<b>Central control color screen</b>	<ul style="list-style-type: none"><li>• Touch LCD screen</li></ul>
<b>Infotainment Screen Size</b>	<ul style="list-style-type: none"><li>• 12.3 inches</li></ul>
<b>Bluetooth/In-car Phone</b>	<ul style="list-style-type: none"><li>•</li></ul>
<b>Smartphone Integration/Mirroring</b>	<ul style="list-style-type: none"><li>• OEM smartphone integration/mirroring</li></ul>
<b>Voice recognition control system</b>	<ul style="list-style-type: none"><li>• Multimedia system;</li><li>• Navigation;</li><li>• Telephone;</li><li>• Air conditioning;</li><li>• Sunroof</li></ul>

## Body

<b>Length (mm)</b>	4710
<b>Width (mm)</b>	1865
<b>Height (mm)</b>	1710
<b>Wheelbase (mm)</b>	2710
<b>Front Track (mm)</b>	1585

## Body (continued)

<b>Rear Track (mm)</b>	1585
<b>Ground Clearance (Fully Loaded) (mm)</b>	170
<b>Door Opening Type</b>	swing door
<b>Number of Doors</b>	5
<b>Number of Seats</b>	5
<b>Fuel Tank Capacity (L)</b>	58
<b>Trunk volume (L)</b>	620-1450
<b>Drag Coefficient (Cd)</b>	-
<b>Approach Angle (°)</b>	19
<b>Departure Angle (°)</b>	24
<b>Minimum ground clearance without load (mm)</b>	190
<b>Longitudinal passing angle (°)</b>	18

## Gearbox

<b>Abbreviation</b>	8-gear manual integration
<b>Number of Gears</b>	8
<b>Transmission Type</b>	Automatic Transmission with Manual Mode (AT)

## Chassis steering

<b>Drive Type</b>	Front-engine, Front-wheel drive (FF)
<b>Front Suspension Type</b>	MacPherson independent suspension
<b>Rear Suspension Type</b>	Multi-link independent suspension
<b>Power Steering Type</b>	Electric power assistance
<b>Vehicle structure</b>	bearing type

## Seat Configuration

<b>Seat Material</b>	• Imitation leather
<b>Main seat adjustment</b>	• Front-to-back adjustment; • Backrest adjustment; • Height adjustment (2-way); ○ Lumbar support (4-way)
<b>Co-seat adjustment method</b>	• Front and rear adjustment; • Backrest adjustment
<b>Electric adjustment of driver's seat and passenger seat</b>	Main •/Deputy •

## Seat Configuration (continued)

<b>Front seat functions</b>	<ul style="list-style-type: none"><li>• Heating; ○ Ventilation (driving position only)</li></ul>
<b>Front passenger seat rear adjustable buttons</b>	-
<b>Second row seat adjustment</b>	<ul style="list-style-type: none"><li>• Backrest adjustment</li></ul>
<b>Rear seat folding</b>	<ul style="list-style-type: none"><li>• Proportional down</li></ul>
<b>Front/rear center armrest</b>	Front •/Rear •
<b>Rear cup holder</b>	<ul style="list-style-type: none"><li>•</li></ul>
<b>Sports style seats</b>	<ul style="list-style-type: none"><li>•</li></ul>

## Active safety

<b>Anti-lock Braking System (ABS)</b>	<ul style="list-style-type: none"><li>•</li></ul>
<b>Electronic Brakeforce Distribution (EBD/CBC)</b>	<ul style="list-style-type: none"><li>•</li></ul>
<b>Brake Assist System (EBA/BAS/BA)</b>	<ul style="list-style-type: none"><li>•</li></ul>
<b>Traction Control System (ASR/TCS/TRC)</b>	<ul style="list-style-type: none"><li>•</li></ul>
<b>Electronic Stability Control (ESC/ESP/DSC)</b>	<ul style="list-style-type: none"><li>•</li></ul>
<b>Tire Pressure Monitoring System (TPMS)</b>	<ul style="list-style-type: none"><li>• Tire pressure display</li></ul>
<b>Seat Belt Reminder</b>	<ul style="list-style-type: none"><li>• Front row</li></ul>
<b>ISOFIX Child Seat Anchors</b>	<ul style="list-style-type: none"><li>•</li></ul>
<b>Lane Departure Warning System (LDWS)</b>	<ul style="list-style-type: none"><li>•</li></ul>
<b>Autonomous Emergency Braking (AEB)</b>	<ul style="list-style-type: none"><li>•</li></ul>
<b>Driver Fatigue Detection</b>	-
<b>Forward Collision Warning (FCW)</b>	<ul style="list-style-type: none"><li>•</li></ul>
<b>Built-in Dashcam</b>	<ul style="list-style-type: none"><li>•</li></ul>

## Air conditioning/refrigerator

<b>Air conditioning temperature control method</b>	<ul style="list-style-type: none"><li>• Automatic air conditioning</li></ul>
<b>Rear Independent Climate Control</b>	-
<b>Rear seat air vents</b>	<ul style="list-style-type: none"><li>•</li></ul>

## Air conditioning/refrigerator (continued)

Temperature zone control	-
Car air purifier	-
In-cabin PM2.5 Filter	•

## Passive safety

Driver/passenger airbag	Main •/Deputy •
Front/rear side airbags	Front •/Rear-
Front/rear head airbags (curtain airbags)	Front •/Rear •

## Wheel brake

Front Brake Type	Ventilation disc
Rear Brake Type	Disc
Parking brake type	Electronic Parking
Front Tire Size	225/55 R19
Rear Tire Size	225/55 R19
Spare Tire Size	Not full-size
Spare tire placement	In the trunk

## Audio/Interior Lighting

Number of speakers	• 6 speakers
Interior ambient lighting	○ 64 color

## Driving functions

Navigation traffic information display	•
Lane assist	-
Lane Keeping Assist System	•
Cruise control system	• Full speed adaptive cruise
Satellite navigation system	•
Driving assistance level	•L2
Lane centering	•
Road traffic sign recognition	•
Map Brand	• Amap; • Tencent
Parking Assist	-

## Exterior lighting

Low beam light source	•LED
-----------------------	------

## Exterior lighting (continued)

<b>High beam light source</b>	•LED
<b>LED daytime running lights</b>	•
<b>Adaptive high and low beam</b>	•
<b>Automatic headlights</b>	•
<b>Height-adjustable headlights</b>	•
<b>Headlight Delay Off</b>	•

## Exterior mirrors

<b>Exterior mirror function</b>	• Electric adjustment; • Electric folding; • Rearview mirror heating; • Automatic folding when locked
---------------------------------	---

## Appearance/anti-theft

<b>Rim material</b>	• Aluminum alloy
<b>Electric trunk</b>	•
<b>Electronic engine immobilizer</b>	•
<b>Central locking system in the car</b>	•
<b>Key Type</b>	• Remote key; • Bluetooth key
<b>Keyless start system</b>	•
<b>Keyless entry function</b>	• Driving position
<b>Electric trunk position memory</b>	•
<b>Roof rack</b>	•
<b>Remote start function</b>	•
<b>Active closed grille</b>	•

## Skylight/Glass

<b>Sunroof Type</b>	• Openable panoramic sunroof
<b>Front/rear electric windows</b>	Front •/Rear •
<b>One-touch window lifting function</b>	• Full vehicle
<b>Window anti-pinch function</b>	•
<b>Car makeup mirror</b>	• Main driver's lamp; • co-pilot's lamp
<b>Rear wiper</b>	•

## Interior and exterior color

<b>Exterior Color</b>	Andean Grey #585B62 dazzle crystal white #FFFFFF Noble Black #000000 blue sky #ADC7DE Atomic putty #ABACB0
<b>Interior Color</b>	Black Mysterious Red #000000 #D47979 Smoke and ink ash Black #D7D8DA #000000

## Steering wheel/interior mirror

<b>Steering Wheel Material</b>	<ul style="list-style-type: none"><li>• Cortex</li></ul>
<b>Steering wheel position adjustment</b>	<ul style="list-style-type: none"><li>• Manual up and down front and rear adjustment</li></ul>
<b>Multi-function steering wheel</b>	<ul style="list-style-type: none"><li>•</li></ul>
<b>Heated Steering Wheel</b>	-
<b>Steering wheel memory</b>	-
<b>Trip computer display screen</b>	<ul style="list-style-type: none"><li>• Color</li></ul>
<b>Full LCD instrument panel</b>	<ul style="list-style-type: none"><li>•</li></ul>
<b>LCD instrument size</b>	<ul style="list-style-type: none"><li>• 12.3 inches</li></ul>
<b>Interior rearview mirror function</b>	<ul style="list-style-type: none"><li>• Manual anti-glare</li></ul>
<b>Gear shifting</b>	<ul style="list-style-type: none"><li>• Electronic gear shift</li></ul>

## Intelligent configuration

<b>Connected Car Services</b>	<ul style="list-style-type: none"><li>•</li></ul>
<b>OTA Updates</b>	<ul style="list-style-type: none"><li>•</li></ul>
<b>4G/5G Network</b>	<ul style="list-style-type: none"><li>•4G</li></ul>
<b>Mobile APP remote function</b>	<ul style="list-style-type: none"><li>• Door control; • Window control; • Vehicle start; • Climate control; • Seat heating; • Vehicle status check/diagnostics; • Vehicle location / find my car</li></ul>
<b>Wi-Fi hotspots</b>	<ul style="list-style-type: none"><li>•</li></ul>

## Driving Control

<b>Driving mode switch</b>	<ul style="list-style-type: none"><li>• Sport; • Economy; • Standard/Comfort; • Customization/Personalization</li></ul>
<b>Automatic parking</b>	<ul style="list-style-type: none"><li>•</li></ul>
<b>Steep slope descent</b>	<ul style="list-style-type: none"><li>•</li></ul>
<b>Hill start assist</b>	<ul style="list-style-type: none"><li>•</li></ul>
<b>Engine start-stop technology</b>	<ul style="list-style-type: none"><li>•</li></ul>

## Driving Hardware

<b>Front/rear parking radar</b>	Front-/Rear •
<b>Driving Assistance Camera System</b>	• 360-degree panoramic image
<b>Number of cameras</b>	• 5
<b>Number of ultrasonic radars</b>	• 4
<b>Transparent chassis/540-degree imaging</b>	•

## In-car charging

<b>Multimedia/charging port</b>	•USB;•SD
<b>Number of USB/Type-C ports</b>	• 1 in the front row/2 in the back row
<b>Mobile phone wireless charging function</b>	• Front row

## Optional Package

<b>Optional Package</b>	Comfortable Bag (1999 yuan Contains Multi-color ambient lighting Driver's seat ventilation 4 Lumbar support)
-------------------------	---

---

"●" = Standard equipment

"-" = Not available

"○" = Optional equipment.

Note: These are Chinese market vehicles. Warranty coverage is not available outside of China.