

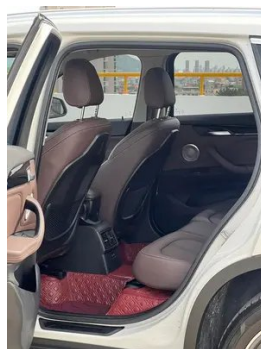
Vehicle Detail Report

BMW X1 2022 sDrive25Li Leading Type

Basic Information

Brand	BMW
Mileage	39,000 km
Color	White
First Registration	2022-01-01
Transfer Count	0

Vehicle Images





Vehicle Condition

1. Driver's seat rails and frame, Signs of removal. 2. Front passenger seat rails and frame, Signs of removal.

Configuration Information

Model Information

Model Name	BMW X1 2022 sDrive25Li Leading Type
Launch Date	2021.12

Basic parameters

Vehicle Class	Compact SUV
Energy Type	Gasoline
Maximum Power (kW)	141
Maximum Torque (N·m)	280
Transmission	7-speed wet dual-clutch
Body Type	SUV
Engine	2.0L 192 hp L4
Dimensions (L×W×H) (mm)	4565*1821*1620
Official 0-100 km/h Acceleration (s)	8.2
Top Speed (km/h)	220
Curb Weight (kg)	1588
Maximum Gross Weight (kg)	2060
NEDC Combined Fuel Consumption (L/100km)	6.2

Basic parameters (continued)

WLTP Combined Fuel Consumption (L/100km)	7.2
---	-----

engine

Engine Model	B48A20C
Displacement (mL)	1998
Displacement (L)	2.0
Induction Type	Turbocharging
Cylinder Arrangement	L
Number of Cylinders	4
Valves per Cylinder	4
Valve Train	DOHC
Maximum Power (PS)	192
Max Power Speed (rpm)	5000-6000
Max Torque Speed (rpm)	1350-4600
Maximum net power (kW)	141
Fuel Grade	95.
Fuel Delivery System	Direct injection
Cylinder Head Material	Aluminum alloy
Cylinder Block Material	Aluminum alloy
Engine layout	Horizontal

Screen/System

Central control color screen	<ul style="list-style-type: none">• Touch LCD screen
Infotainment Screen Size	<ul style="list-style-type: none">• 10.25 inches
Bluetooth/In-car Phone	<ul style="list-style-type: none">•
Smartphone Integration/Mirroring	<ul style="list-style-type: none">• Support CarPlay;• Support CarLife
Voice recognition control system	<ul style="list-style-type: none">• Multimedia system;• Telephone
In-vehicle intelligent system	<ul style="list-style-type: none">• iDrive

Body

Length (mm)	4565
Width (mm)	1821
Height (mm)	1620
Wheelbase (mm)	2780

Body (continued)

Front Track (mm)	1563
Rear Track (mm)	1564
Door Opening Type	swing door
Number of Doors	5
Number of Seats	5
Fuel Tank Capacity (L)	61
Trunk volume (L)	505-1650
Drag Coefficient (Cd)	-
Approach Angle (°)	18
Departure Angle (°)	21

Gearbox

Abbreviation	7-speed wet dual-clutch
Number of Gears	7
Transmission Type	Wet Dual-Clutch Transmission (DCT)

Chassis steering

Drive Type	Front-engine, Front-wheel drive (FF)
Front Suspension Type	MacPherson independent suspension
Rear Suspension Type	Multi-link independent suspension
Power Steering Type	Electric power assistance
Vehicle structure	bearing type

Seat Configuration

Seat Material	<ul style="list-style-type: none">• Imitation leather
Main seat adjustment	<ul style="list-style-type: none">• Front and rear adjustment;• Backrest adjustment;• Height adjustment (4-way);• Leg support adjustment
Co-seat adjustment method	<ul style="list-style-type: none">• Front and rear adjustment;• Backrest adjustment;• Height adjustment (4-way);• Leg support adjustment
Electric adjustment of driver's seat and passenger seat	Main •/Deputy •
Front seat functions	<input type="radio"/> Heating (USD 441)
Electric seat memory function	<ul style="list-style-type: none">• Driving position

Seat Configuration (continued)

Front passenger seat rear adjustable buttons	-
Second row seat adjustment	• Front and rear adjustment; • Backrest adjustment
Rear seat folding	• Proportional down
Front/rear center armrest	Front •/Rear •
Rear cup holder	•
Sports style seats	•

Active safety

Anti-lock Braking System (ABS)	•
Electronic Brakeforce Distribution (EBD/CBC)	•
Brake Assist System (EBA/BAS/BA)	•
Traction Control System (ASR/TCS/TRC)	•
Electronic Stability Control (ESC/ESP/DSC)	•
Tire Pressure Monitoring System (TPMS)	• Tire pressure display
Seat Belt Reminder	• Front row
ISOFIX Child Seat Anchors	•
Lane Departure Warning System (LDWS)	-
Autonomous Emergency Braking (AEB)	-
Driver Fatigue Detection	-
Emergency Call System (eCall)	•

Air conditioning/refrigerator

Air conditioning temperature control method	• Automatic air conditioning
Rear Independent Climate Control	-
Rear seat air vents	•
Temperature zone control	•
Car air purifier	-
In-cabin PM2.5 Filter	-

Passive safety

Driver/passenger airbag	Main •/Deputy •
Front/rear side airbags	Front •/Rear-
Front/rear head airbags (curtain airbags)	Front •/Rear •
Run-flat tires	•

Wheel brake

Front Brake Type	Ventilation disc
Rear Brake Type	Disc
Parking brake type	Electronic Parking
Front Tire Size	225/50 R18
Rear Tire Size	225/50 R18
Spare Tire Size	None

Audio/Interior Lighting

Speaker Brand Name	○ Harman/Kardon Harman Kardon (USD 956)
Number of speakers	• 7 horn; ○ 12 horn
Interior ambient lighting	• 6 colors

Driving functions

Navigation traffic information display	-
Lane assist	-
Lane Keeping Assist System	-
Cruise control system	• Cruise control
Satellite navigation system	-
Parking Assist	-

Exterior lighting

Low beam light source	•LED
High beam light source	•LED
LED daytime running lights	•
Adaptive high and low beam	-
Automatic headlights	•
Height-adjustable headlights	•

Exterior lighting (continued)

Headlight Delay Off	<ul style="list-style-type: none">•
----------------------------	---

Exterior mirrors

Exterior mirror function	<ul style="list-style-type: none">•Electric adjustment;•Electric folding;•Rearview mirror memory;•Rearview mirror heating;•Automatically turn down when reversing;•Automatically fold when locking the car
---------------------------------	---

Appearance/anti-theft

Rim material	<ul style="list-style-type: none">• Aluminum alloy
Electric trunk	<ul style="list-style-type: none">•
Electronic engine immobilizer	<ul style="list-style-type: none">•
Central locking system in the car	<ul style="list-style-type: none">•
Key Type	<ul style="list-style-type: none">• Remote key
Keyless start system	<ul style="list-style-type: none">•
Keyless entry function	<ul style="list-style-type: none">• Front row
Hands-free Trunk	<ul style="list-style-type: none">•
Electric trunk position memory	<ul style="list-style-type: none">•
Roof rack	<ul style="list-style-type: none">•

Skylight/Glass

Sunroof Type	<ul style="list-style-type: none">• Openable panoramic sunroof
Front/rear electric windows	Front •/Rear •
One-touch window lifting function	<ul style="list-style-type: none">• Full car
Window anti-pinch function	<ul style="list-style-type: none">•
Car makeup mirror	<ul style="list-style-type: none">• Main driver's lamp;• co-pilot's lamp
Rear wiper	<ul style="list-style-type: none">•
Rain sensor wiper function	<ul style="list-style-type: none">• Rainfall-sensing

Interior and exterior color

Interior and exterior color (continued)

Exterior Color	Mysterious gray:#262626; Quantum blue:#273F7C; Fragrant red:#810B17; Cashmi silver:#C6C1B4; Ore white:#E7E7E7; Starlight brown:#28160F
Interior Color	Black/mocha:#000000/#423534; Black:#000000

Steering wheel/interior mirror

Steering Wheel Material	• Leather
Steering wheel position adjustment	• Manual up and down front and rear adjustment
Multi-function steering wheel	•
Heated Steering Wheel	-
Steering wheel memory	-
Trip computer display screen	• Color
Full LCD instrument panel	-
Interior rearview mirror function	• Manual anti-glare
Gear shifting	• Electronic gear shift

Intelligent configuration

Connected Car Services	•
OTA Updates	-
4G/5G Network	•4G

Driving Control

Driving mode switch	• Sport; • Economy; • Standard/Comfort; • Customization/Personalization
Automatic parking	-
Hill start assist	•
Energy recovery system	•
Engine start-stop technology	•

Driving Hardware

Front/rear parking radar	Front •/Rear •
Driving Assistance Camera System	• Reversing image

In-car charging

In-car charging (continued)

Multimedia/charging port	•USB;•Type-C
Number of USB/Type-C ports	• 2 in the front row/2 in the back row

"●" = Standard equipment

"-" = Not available

"○" = Optional equipment.

Note: These are Chinese market vehicles. Warranty coverage is not available outside of China.