

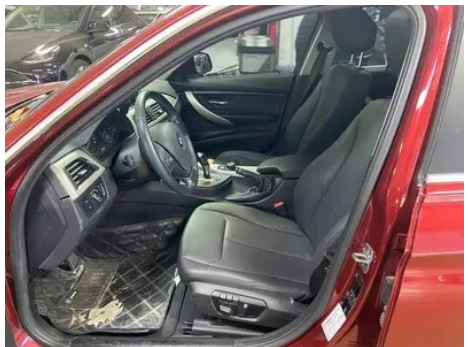
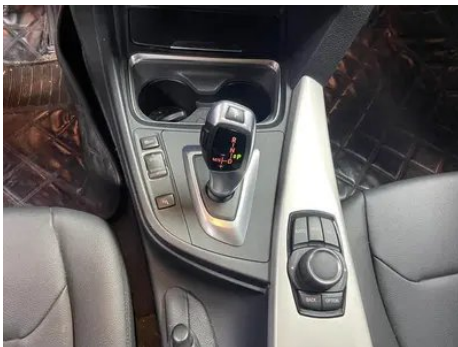
Vehicle Detail Report

BMW 3 Series 2015 320Li Fashionable

Basic Information

Brand	BMW
Mileage	94,000 km
Color	Red
First Registration	2015-07-01
Transfer Count	0

Vehicle Images





Vehicle Condition

1. Right rear quarter panel, Paint repair, Body panel repair.

Configuration Information

Model Information

Model Name	BMW 3 Series 2015 320Li Fashionable
Launch Date	2014.09

Basic parameters

Vehicle Class	Mid-size car
Energy Type	Gasoline
Maximum Power (kW)	135
Maximum Torque (N·m)	270
Transmission	8-gear manual integration
Body Type	Sedan
Engine	2.0L 184 hp L4
Dimensions (L×W×H) (mm)	4734*1811*1453
Official 0-100 km/h Acceleration (s)	7.9
Top Speed (km/h)	235
Curb Weight (kg)	1540
Maximum Gross Weight (kg)	-
NEDC Combined Fuel Consumption (L/100km)	6.9

engine

Engine Model	N20B20
Displacement (mL)	1997
Displacement (L)	2.0
Induction Type	Turbocharging
Cylinder Arrangement	L
Number of Cylinders	4
Valves per Cylinder	4
Compression Ratio	11
Valve Train	DOHC
Bore (mm)	84
Stroke (mm)	90.1
Maximum Power (PS)	184
Max Power Speed (rpm)	5000
Max Torque Speed (rpm)	1250-4500
Maximum net power (kW)	-
Fuel Grade	95.
Fuel Delivery System	Direct injection
Cylinder Head Material	Aluminum alloy
Cylinder Block Material	Aluminum alloy
Engine-specific technologies	Double VANOS/Valvetronic

Screen/System

Central control color screen	<ul style="list-style-type: none">•
Bluetooth/In-car Phone	<ul style="list-style-type: none">•
In-car CD/DVD Player	<ul style="list-style-type: none">• Single disc CD

Body

Length (mm)	4734
Width (mm)	1811
Height (mm)	1453
Wheelbase (mm)	2920
Front Track (mm)	1531
Rear Track (mm)	1572
Door Opening Type	-

Body (continued)

Number of Doors	4
Number of Seats	5
Fuel Tank Capacity (L)	60
Trunk volume (L)	480
Drag Coefficient (Cd)	-

Gearbox

Abbreviation	8-gear manual integration
Number of Gears	8
Transmission Type	Automatic Transmission with Manual Mode (AT)

Chassis steering

Drive Type	Front-engine, Rear-wheel drive (FR)
Front Suspension Type	Dual-ball-joint MacPherson independent suspension
Rear Suspension Type	Multi-link independent suspension
Power Steering Type	Electric power assistance
Vehicle structure	bearing type

Seat Configuration

Seat Material	<ul style="list-style-type: none">• Imitation leather
Main seat adjustment	<ul style="list-style-type: none">• Front and rear adjustment;• Backrest adjustment;• Height adjustment (2-way)
Co-seat adjustment method	<ul style="list-style-type: none">• Front and rear adjustment;• Backrest adjustment
Electric adjustment of driver's seat and passenger seat	Main •/Deputy •
Front seat functions	<input type="radio"/> Heating (USD 485)
Electric seat memory function	<ul style="list-style-type: none">•
Front passenger seat rear adjustable buttons	<ul style="list-style-type: none">•
Rear seat folding	<ul style="list-style-type: none">• Proportional down
Front/rear center armrest	Front •/Rear •
Rear cup holder	<ul style="list-style-type: none">•

Active safety

Anti-lock Braking System (ABS)	<ul style="list-style-type: none">•
---------------------------------------	---------------------------------------------------

Active safety (continued)

Electronic Brakeforce Distribution (EBD/CBC)	•
Brake Assist System (EBA/BAS/BA)	•
Traction Control System (ASR/TCS/TRC)	•
Electronic Stability Control (ESC/ESP/DSC)	•
Tire Pressure Monitoring System (TPMS)	•
Seat Belt Reminder	•
ISOFIX Child Seat Anchors	•
Lane Departure Warning System (LDWS)	-
Autonomous Emergency Braking (AEB)	-
Driver Fatigue Detection	-
Emergency Call System (eCall)	○

Air conditioning/refrigerator

Air conditioning temperature control method	• Automatic air conditioning
Rear Independent Climate Control	-
Rear seat air vents	•
Temperature zone control	•
Car air purifier	-
In-cabin PM2.5 Filter	-

Passive safety

Driver/passenger airbag	Main •/Deputy •
Front/rear side airbags	Front •/Rear-
Front/rear head airbags (curtain airbags)	Front •/Rear •
Run-flat tires	•

Wheel brake

Front Brake Type	Ventilation disc
Rear Brake Type	Ventilation disc
Parking brake type	handbrake

Wheel brake (continued)

Front Tire Size	225/55 R16
Rear Tire Size	225/55 R16
Spare Tire Size	None

Audio/Interior Lighting

Number of speakers	• 6-7 Horns
---------------------------	-------------

Driving functions

Navigation traffic information display	-
Lane assist	-
Lane Keeping Assist System	-
Satellite navigation system	-
Parking Assist	-

Exterior lighting

Low beam light source	• Xenon
High beam light source	• Xenon
LED daytime running lights	•
Adaptive high and low beam	-
Automatic headlights	•
Front fog lights	•
Height-adjustable headlights	•
Headlight Delay Off	-
Headlight cleaning device	•

Exterior mirrors

Exterior mirror function	• Electric adjustment; • Mirror memory function; • Heated mirrors
---------------------------------	-------------------------------------------------------------------

Appearance/anti-theft

Rim material	• Aluminum alloy
Electric trunk	-
Electronic engine immobilizer	•
Central locking system in the car	•
Key Type	• Remote key

Appearance/anti-theft (continued)

Keyless start system	•
Appearance Kit	○ Sports style

Skylight/Glass

Sunroof Type	• Electric sunroof
Front/rear electric windows	Front •/Rear •
Window anti-pinch function	•
Rear windshield sunshade	•
Car makeup mirror	•
Rear wiper	-
Rain sensor wiper function	•
Rear side window sunshades	•

Interior and exterior color

Exterior Color	Snow mountain white:#FAFAFA; Cashmi silver:#C6C1B4; Gemstone green:#242224; Glacier silver:#949A9C; Havana ash:#48413B; Ore ash:#949A9C; Milano beige:#BAAB8D; Melbourne red:#610303; Shiny brown:#837F71; Crystal blue:#75C8D6
Interior Color	Black: #000000; Black/Venetian Beige: #000000/#CDB589

Steering wheel/interior mirror

Steering Wheel Material	• Cortex
Steering wheel position adjustment	• Manual up and down front and rear adjustment
Multi-function steering wheel	•
Heated Steering Wheel	-
Steering wheel memory	-
Trip computer display screen	•
Full LCD instrument panel	-
Interior rearview mirror function	• Automatic anti-glare

Steering wheel/interior mirror (continued)

HUD Head Up Digital Display	○
------------------------------------	---

Intelligent configuration

Connected Car Services	-
OTA Updates	-

Driving Control

Automatic parking	-
Hill start assist	•
Engine start-stop technology	•

Driving Hardware

Front/rear parking radar	Front •/Rear •
---------------------------------	----------------

In-car charging

Multimedia/charging port	•USB;•AUX
---------------------------------	-----------

"●" = Standard equipment

"_" = Not available

"○" = Optional equipment.

Note: These are Chinese market vehicles. Warranty coverage is not available outside of China.