

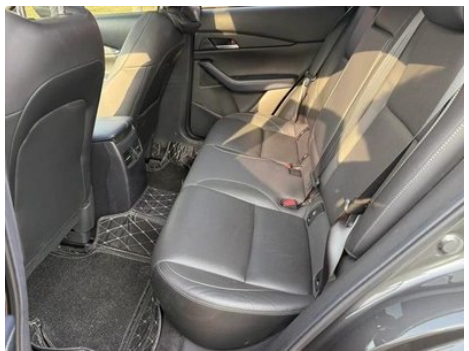
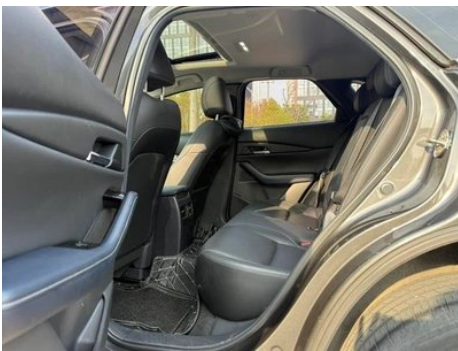
# Vehicle Detail Report

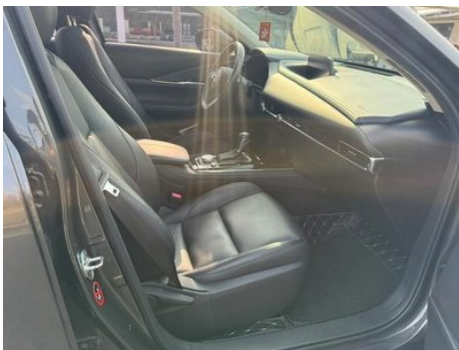
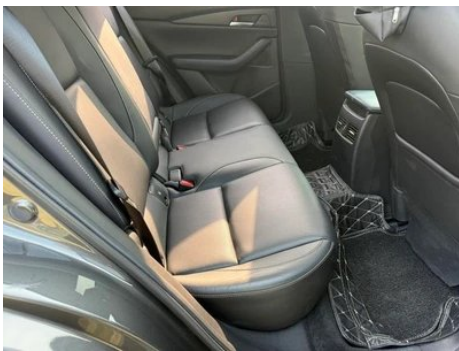
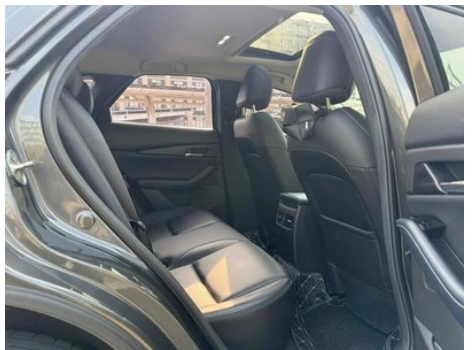
Mazda CX-30 2020 2.0L Automatic Jiayue

## Basic Information

Brand	Mazda
Mileage	53,000 km
Color	Dark gray
First Registration	2020-11-01
Transfer Count	0

## Vehicle Images







## Vehicle Condition

1. Right front door, Replaced. 2. Right rear door, Replaced. 3. Right front fender, Replaced. 4. Right rear fender, Paint repair. 5. Right headlight, Replaced.

## Configuration Information

### Model Information

<b>Model Name</b>	Mazda CX-30 2020 2.0L Automatic Jiayue
<b>Launch Date</b>	2020.05

### Basic parameters

<b>Vehicle Class</b>	Small SUV
<b>Energy Type</b>	Gasoline
<b>Maximum Power (kW)</b>	116
<b>Maximum Torque (N·m)</b>	202
<b>Transmission</b>	6-speed manual integration
<b>Body Type</b>	SUV
<b>Engine</b>	2.0L 158 horsepower L4
<b>Dimensions (L×W×H) (mm)</b>	4395*1797*1545
<b>Official 0-100 km/h Acceleration (s)</b>	-
<b>Top Speed (km/h)</b>	-
<b>Curb Weight (kg)</b>	1442
<b>Maximum Gross Weight (kg)</b>	-
<b>NEDC Combined Fuel Consumption (L/100km)</b>	6.1

### engine

<b>Engine Model</b>	PE
<b>Displacement (mL)</b>	1998
<b>Displacement (L)</b>	2.0
<b>Induction Type</b>	Natural aspiration

## engine (continued)

<b>Cylinder Arrangement</b>	L
<b>Number of Cylinders</b>	4
<b>Valves per Cylinder</b>	4
<b>Compression Ratio</b>	13
<b>Valve Train</b>	DOHC
<b>Maximum Power (PS)</b>	158
<b>Max Power Speed (rpm)</b>	6000
<b>Max Torque Speed (rpm)</b>	4000
<b>Maximum net power (kW)</b>	116
<b>Fuel Grade</b>	92.
<b>Fuel Delivery System</b>	Direct injection
<b>Cylinder Head Material</b>	Aluminum alloy
<b>Cylinder Block Material</b>	Aluminum alloy
<b>Engine layout</b>	Horizontal
<b>Engine-specific technologies</b>	Dual S-VT

## Screen/System

<b>Central control color screen</b>	<ul style="list-style-type: none"><li>• Ordinary LCD screen</li></ul>
<b>Infotainment Screen Size</b>	<ul style="list-style-type: none"><li>• 8.8 inches</li></ul>
<b>Bluetooth/In-car Phone</b>	<ul style="list-style-type: none"><li>•</li></ul>
<b>Smartphone Integration/Mirroring</b>	<ul style="list-style-type: none"><li>• Support CarPlay;</li><li>• Support CarLife</li></ul>

## Body

<b>Length (mm)</b>	4395
<b>Width (mm)</b>	1797
<b>Height (mm)</b>	1545
<b>Wheelbase (mm)</b>	2653
<b>Front Track (mm)</b>	1564
<b>Rear Track (mm)</b>	1563
<b>Door Opening Type</b>	swing door
<b>Number of Doors</b>	5
<b>Number of Seats</b>	5
<b>Trunk volume (L)</b>	-
<b>Drag Coefficient (Cd)</b>	-

## Body (continued)

<b>Approach Angle (°)</b>	16
<b>Departure Angle (°)</b>	26
<b>Minimum Turning Radius (m)</b>	5.7

## Gearbox

<b>Abbreviation</b>	6-speed manual integration
<b>Number of Gears</b>	6
<b>Transmission Type</b>	Automatic Transmission with Manual Mode (AT)

## Chassis steering

<b>Drive Type</b>	Front-engine, Front-wheel drive (FF)
<b>Front Suspension Type</b>	MacPherson independent suspension
<b>Rear Suspension Type</b>	Torsion beam non-independent suspension
<b>Power Steering Type</b>	Electric power assistance
<b>Vehicle structure</b>	bearing type

## Seat Configuration

<b>Seat Material</b>	• Leather
<b>Main seat adjustment</b>	• Front and rear adjustment; • Backrest adjustment; • Height adjustment (4-way)
<b>Co-seat adjustment method</b>	• Front and rear adjustment; • Backrest adjustment
<b>Electric adjustment of driver's seat and passenger seat</b>	-
<b>Front passenger seat rear adjustable buttons</b>	-
<b>Rear seat folding</b>	• Proportional down
<b>Front/rear center armrest</b>	Front •/Rear •
<b>Rear cup holder</b>	•

## Active safety

<b>Anti-lock Braking System (ABS)</b>	•
<b>Electronic Brakeforce Distribution (EBD/CBC)</b>	•
<b>Brake Assist System (EBA/BAS/BA)</b>	•

## Active safety (continued)

<b>Traction Control System (ASR/TCS/TRC)</b>	•
<b>Electronic Stability Control (ESC/ESP/DSC)</b>	•
<b>Tire Pressure Monitoring System (TPMS)</b>	• Tire pressure alarm
<b>Seat Belt Reminder</b>	• Full car
<b>ISOFIX Child Seat Anchors</b>	•
<b>Lane Departure Warning System (LDWS)</b>	-
<b>Autonomous Emergency Braking (AEB)</b>	-
<b>Driver Fatigue Detection</b>	-

## Air conditioning/refrigerator

<b>Air conditioning temperature control method</b>	• Automatic air conditioning
<b>Rear Independent Climate Control</b>	-
<b>Rear seat air vents</b>	•
<b>Temperature zone control</b>	•
<b>Car air purifier</b>	-
<b>In-cabin PM2.5 Filter</b>	-

## Passive safety

<b>Driver/passenger airbag</b>	Main •/Deputy •
<b>Front/rear side airbags</b>	Front •/Rear-
<b>Front/rear head airbags (curtain airbags)</b>	Front •/Rear •
<b>Knee airbag</b>	• Main driver knee airbag

## Wheel brake

<b>Front Brake Type</b>	Ventilation disc
<b>Rear Brake Type</b>	Disc
<b>Parking brake type</b>	Electronic Parking
<b>Front Tire Size</b>	215/55 R18
<b>Rear Tire Size</b>	215/55 R18
<b>Spare Tire Size</b>	Not full-size

## Audio/Interior Lighting

<b>Number of speakers</b>	• 8 speakers
---------------------------	--------------

## Driving functions

<b>Navigation traffic information display</b>	-
<b>Lane assist</b>	-
<b>Lane Keeping Assist System</b>	-
<b>Cruise control system</b>	• Cruise control
<b>Satellite navigation system</b>	-
<b>Parking Assist</b>	-

## Exterior lighting

<b>Low beam light source</b>	•LED
<b>High beam light source</b>	•LED
<b>LED daytime running lights</b>	-
<b>Adaptive high and low beam</b>	-
<b>Automatic headlights</b>	-
<b>Height-adjustable headlights</b>	•
<b>Headlight Delay Off</b>	•

## Exterior mirrors

<b>Exterior mirror function</b>	• Electric adjustment; • Electric folding; • Rearview mirror heating; • Automatic folding when locked
---------------------------------	---

## Appearance/anti-theft

<b>Rim material</b>	• Aluminum alloy
<b>Electric trunk</b>	-
<b>Electronic engine immobilizer</b>	•
<b>Central locking system in the car</b>	•
<b>Key Type</b>	• Remote key
<b>Keyless start system</b>	•
<b>Keyless entry function</b>	• Front row
<b>Roof rack</b>	•
<b>Active closed grille</b>	•

## Skylight/Glass

<b>Sunroof Type</b>	• Electric sunroof
---------------------	--------------------

## Skylight/Glass (continued)

<b>Front/rear electric windows</b>	Front •/Rear •
<b>One-touch window lifting function</b>	• Full car
<b>Window anti-pinch function</b>	•
<b>Car makeup mirror</b>	• Main driver's lamp; • co-pilot's lamp
<b>Rear wiper</b>	•

## Interior and exterior color

<b>Exterior Color</b>	Extreme ash:#58606C; Platinum steel ash:#55565A; Crystal diamond blue:#20325E, Crystal, Soul Moving Red:#D40117, Pearlescent, White:#FFFFFF
<b>Interior Color</b>	Black, Blue, #000000/#334353

## Steering wheel/interior mirror

<b>Steering Wheel Material</b>	• Leather
<b>Steering wheel position adjustment</b>	• Manual up and down front and rear adjustment
<b>Multi-function steering wheel</b>	•
<b>Heated Steering Wheel</b>	-
<b>Steering wheel memory</b>	-
<b>Trip computer display screen</b>	• Color
<b>Full LCD instrument panel</b>	-
<b>LCD instrument size</b>	• 7 inches
<b>Interior rearview mirror function</b>	• Manual anti-glare

## Intelligent configuration

<b>Connected Car Services</b>	-
<b>OTA Updates</b>	-

## Driving Control

<b>Automatic parking</b>	•
<b>Hill start assist</b>	•
<b>Engine start-stop technology</b>	•

## Driving Hardware

<b>Front/rear parking radar</b>	Front-/Rear •
---------------------------------	---------------

## Driving Hardware (continued)

<b>Driving Assistance Camera System</b>	• Reversing image
---	-------------------

## In-car charging

<b>Multimedia/charging port</b>	•USB;•SD
<b>Number of USB/Type-C ports</b>	• 2 in the front row

---

"●" = Standard equipment

"-" = Not available

"○" = Optional equipment.

Note: These are Chinese market vehicles. Warranty coverage is not available outside of China.