

Vehicle Detail Report

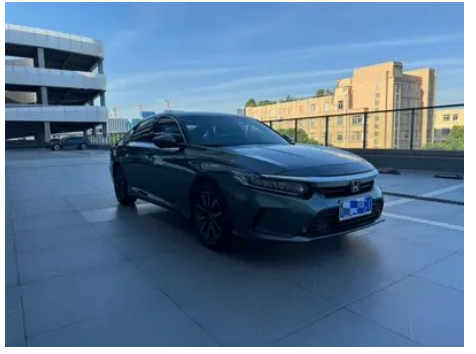
Honda Inspire 2022 260TURBO Fine Edition

Basic Information

Brand	Honda
Mileage	45,000 km
Color	Green
First Registration	2023-01-01
Transfer Count	0

Vehicle Images







Vehicle Condition

1. Right rocker panel, Paint repair, Outer-side body panel repair. 2. Right rear quarter panel, Paint repair, Body panel repair.

Configuration Information

Model Information

Model Name	Honda Inspire 2022 260TURBO Fine Edition
Launch Date	2021.11

Basic parameters

Vehicle Class	Mid-size car
Energy Type	Gasoline
Maximum Power (kW)	143
Maximum Torque (N·m)	260
Transmission	CVT continuously variable transmission
Body Type	Sedan
Engine	1.5T 194 horsepower L4
Dimensions (L×W×H) (mm)	4924*1862*1449
Official 0-100 km/h Acceleration (s)	-
Top Speed (km/h)	188
Curb Weight (kg)	1506
Maximum Gross Weight (kg)	2000
NEDC Combined Fuel Consumption (L/100km)	6.4

engine

Engine Model	L15BR
Displacement (mL)	1498
Displacement (L)	1.5
Induction Type	Turbocharging

engine (continued)

Cylinder Arrangement	L
Number of Cylinders	4
Valves per Cylinder	4
Compression Ratio	10.3
Valve Train	DOHC
Maximum Power (PS)	194
Max Power Speed (rpm)	5500
Max Torque Speed (rpm)	1600-5000
Maximum net power (kW)	143
Fuel Grade	92.
Fuel Delivery System	Direct injection
Cylinder Head Material	Aluminum alloy
Cylinder Block Material	Aluminum alloy
Engine layout	Horizontal
Engine-specific technologies	VTEC

Screen/System

Central control color screen	<ul style="list-style-type: none">• Touch LCD screen
Infotainment Screen Size	<ul style="list-style-type: none">• 10.25 inches
Bluetooth/In-car Phone	<ul style="list-style-type: none">•
Smartphone Integration/Mirroring	<ul style="list-style-type: none">• Baidu CarLife support

Body

Length (mm)	4924
Width (mm)	1862
Height (mm)	1449
Wheelbase (mm)	2830
Front Track (mm)	1600
Rear Track (mm)	1610
Door Opening Type	swing door
Number of Doors	4
Number of Seats	5
Fuel Tank Capacity (L)	56
Trunk volume (L)	-

Body (continued)

Drag Coefficient (Cd)	-
Approach Angle (°)	14
Departure Angle (°)	17
Minimum Turning Radius (m)	5.7

Gearbox

Abbreviation	CVT continuously variable transmission
Number of Gears	stepless speed change
Transmission Type	Continuously Variable Transmission (CVT)

Chassis steering

Drive Type	Front-engine, Front-wheel drive (FF)
Front Suspension Type	MacPherson independent suspension
Rear Suspension Type	Multi-link independent suspension
Power Steering Type	Electric power assistance
Vehicle structure	bearing type

Seat Configuration

Seat Material	• Imitation leather
Main seat adjustment	• Front and rear adjustment; • Backrest adjustment; • Height adjustment (4-way)
Co-seat adjustment method	• Front and rear adjustment; • Backrest adjustment
Electric adjustment of driver's seat and passenger seat	Main •/Deputy •
Front passenger seat rear adjustable buttons	-
Rear seat folding	• Overall down
Front/rear center armrest	Front •/Rear •
Rear cup holder	•

Active safety

Anti-lock Braking System (ABS)	•
Electronic Brakeforce Distribution (EBD/CBC)	•

Active safety (continued)

Brake Assist System (EBA/BAS/BA)	•
Traction Control System (ASR/TCS/TRC)	•
Electronic Stability Control (ESC/ESP/DSC)	•
Tire Pressure Monitoring System (TPMS)	• Tire pressure alarm
Seat Belt Reminder	• Front row
ISOFIX Child Seat Anchors	•
Lane Departure Warning System (LDWS)	•
Autonomous Emergency Braking (AEB)	•
Driver Fatigue Detection	•
Forward Collision Warning (FCW)	•

Air conditioning/refrigerator

Air conditioning temperature control method	• Automatic air conditioning
Rear Independent Climate Control	-
Rear seat air vents	•
Temperature zone control	•
Car air purifier	-
In-cabin PM2.5 Filter	•

Passive safety

Driver/passenger airbag	Main •/Deputy •
Front/rear side airbags	Front •/Rear-
Front/rear head airbags (curtain airbags)	Front •/Rear •
Passive pedestrian protection	•

Wheel brake

Front Brake Type	Ventilation disc
Rear Brake Type	Disc
Parking brake type	Electronic Parking
Front Tire Size	225/50 R17

Wheel brake (continued)

Rear Tire Size	225/50 R17
Spare Tire Size	Not full-size

Audio/Interior Lighting

Number of speakers	• 4 speakers
---------------------------	--------------

Driving functions

Navigation traffic information display	-
Lane assist	-
Lane Keeping Assist System	•
Cruise control system	• Full speed adaptive cruise
Satellite navigation system	-
Driving assistance level	•L2
Lane centering	•
Road traffic sign recognition	•
Driver assistance systems	•Honda SENSING
Parking Assist	-

Exterior lighting

Low beam light source	•LED
High beam light source	•LED
LED daytime running lights	•
Adaptive high and low beam	•
Automatic headlights	•
Front fog lights	•LED
Height-adjustable headlights	•
Headlight Delay Off	•
Turn signal lamp	•

Exterior mirrors

Exterior mirror function	• Electric adjustment
---------------------------------	-----------------------

Appearance/anti-theft

Rim material	• Aluminum alloy
Electric trunk	-

Appearance/anti-theft (continued)

Electronic engine immobilizer	<ul style="list-style-type: none">•
Central locking system in the car	<ul style="list-style-type: none">•
Key Type	<ul style="list-style-type: none">• Remote key
Keyless start system	<ul style="list-style-type: none">•
Keyless entry function	<ul style="list-style-type: none">• Front row
Active closed grille	<ul style="list-style-type: none">•

Skylight/Glass

Sunroof Type	<ul style="list-style-type: none">• Openable panoramic sunroof
Front/rear electric windows	Front •/Rear •
One-touch window lifting function	<ul style="list-style-type: none">• Front row
Window anti-pinch function	<ul style="list-style-type: none">•
Car makeup mirror	<ul style="list-style-type: none">• Main driver's lamp; • co-pilot's lamp
Rear wiper	-
Side window multi-layer soundproof glass	<ul style="list-style-type: none">• Front row

Interior and exterior color

Exterior Color	Yayun Gold #A29481 color crystal black #000000 Jingyao White #EBECF1 Silver and gray #2D4150 Moonlight Blue #005391
Interior Color	Black:#000000

Steering wheel/interior mirror

Steering Wheel Material	<ul style="list-style-type: none">• Leather
Steering wheel position adjustment	<ul style="list-style-type: none">• Manual up and down front and rear adjustment
Multi-function steering wheel	<ul style="list-style-type: none">•
Heated Steering Wheel	-
Steering wheel memory	-
Trip computer display screen	<ul style="list-style-type: none">• Color
Full LCD instrument panel	-
LCD instrument size	<ul style="list-style-type: none">• 7 inches

Steering wheel/interior mirror (continued)

Interior rearview mirror function	• Manual anti-glare
Gear shifting	• Mechanical gear shift
ETC Device	•

Intelligent configuration

Connected Car Services	-
OTA Updates	-
Active Noise Cancellation	•

Driving Control

Driving mode switch	• Movement; • Economy
Automatic parking	•
Hill start assist	•
Variable steering ratio	•
Engine start-stop technology	•

Driving Hardware

Front/rear parking radar	-
Driving Assistance Camera System	• Reversing image

In-car charging

Multimedia/charging port	•USB
Number of USB/Type-C ports	• 1 in the front row/2 in the back row

"●" = Standard equipment

"-" = Not available

"○" = Optional equipment.

Note: These are Chinese market vehicles. Warranty coverage is not available outside of China.