

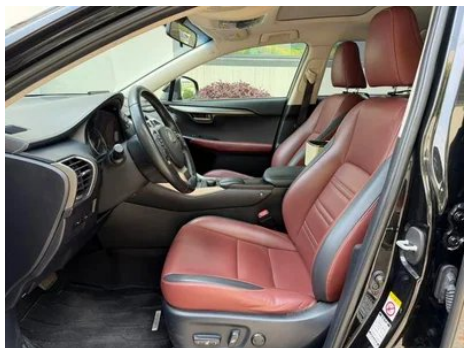
# Vehicle Detail Report

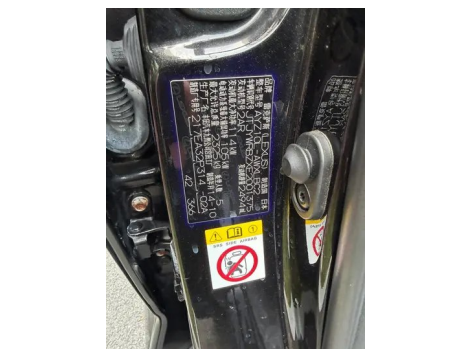
## Lexus NX 2015 300h Precursor Feng Shang Edition

### Basic Information

Brand	Lexus
Mileage	138,000 km
Color	Black
First Registration	2015-07-01
Transfer Count	0

### Vehicle Images





## Vehicle Condition

1. Left upper side rail, Paint repair, Bodywork repair. 2. Right upper side rail, Paint repair. 3. Left rocker panel, Outer side deformation. 4. Right rocker panel, Inner side deformation, Outer side deformation. 5. Left rear fender, Paint repair. 6. Right rear fender, Paint repair.

## Configuration Information

### Model Information

## Model Information (continued)

<b>Model Name</b>	Lexus NX 2015 300h Precursor Feng Shang Edition
<b>Launch Date</b>	2014.11

### Basic parameters

<b>Vehicle Class</b>	Mid-size SUV
<b>Energy Type</b>	Hybrid Electric Vehicle (HEV)
<b>Maximum Power (kW)</b>	114
<b>Maximum Torque (N·m)</b>	210
<b>Transmission</b>	E-CVT continuously variable transmission
<b>Body Type</b>	SUV
<b>Engine</b>	2.5L 155 horsepower L4
<b>Dimensions (L×W×H) (mm)</b>	4630*1845*1645
<b>Official 0-100 km/h Acceleration (s)</b>	9.2
<b>Top Speed (km/h)</b>	180
<b>Curb Weight (kg)</b>	1785
<b>Maximum Gross Weight (kg)</b>	-
<b>Electric Motor (PS)</b>	143
<b>NEDC Combined Fuel Consumption (L/100km)</b>	5.8

### engine

<b>Engine Model</b>	2AR-FXE
<b>Displacement (mL)</b>	2494
<b>Displacement (L)</b>	2.5
<b>Induction Type</b>	Natural aspiration
<b>Cylinder Arrangement</b>	L
<b>Number of Cylinders</b>	4
<b>Valves per Cylinder</b>	4
<b>Compression Ratio</b>	12.5
<b>Valve Train</b>	DOHC
<b>Bore (mm)</b>	90
<b>Stroke (mm)</b>	98
<b>Maximum Power (PS)</b>	155

## engine (continued)

<b>Max Power Speed (rpm)</b>	5700
<b>Max Torque Speed (rpm)</b>	4200-4400
<b>Maximum net power (kW)</b>	-
<b>Fuel Grade</b>	92.
<b>Fuel Delivery System</b>	Multi-point EFI
<b>Cylinder Head Material</b>	Aluminum alloy
<b>Cylinder Block Material</b>	Aluminum alloy
<b>Engine-specific technologies</b>	VVT-i

## Electric Motor

<b>Motor Type</b>	-
<b>Total Electric Motor Power (kW)</b>	105
<b>Total Electric Motor Torque (N·m)</b>	270
<b>Front Electric Motor Max Power (kW)</b>	105
<b>Front Electric Motor Max Torque (N·m)</b>	270
<b>System total power (kW)</b>	145
<b>Number of drive motors</b>	Single motor
<b>Motor Layout</b>	Front-end
<b>Battery Type</b>	-

## Screen/System

<b>Central control color screen</b>	<ul style="list-style-type: none"><li>•</li></ul>
<b>Infotainment Screen Size</b>	<ul style="list-style-type: none"><li>• 7 inches</li></ul>
<b>Bluetooth/In-car Phone</b>	<ul style="list-style-type: none"><li>•</li></ul>
<b>In-car CD/DVD Player</b>	<ul style="list-style-type: none"><li>• Single disc CD</li></ul>

## Body

<b>Length (mm)</b>	4630
<b>Width (mm)</b>	1845
<b>Height (mm)</b>	1645
<b>Wheelbase (mm)</b>	2660
<b>Front Track (mm)</b>	1580
<b>Rear Track (mm)</b>	1580

## Body (continued)

<b>Door Opening Type</b>	-
<b>Number of Doors</b>	5
<b>Number of Seats</b>	5
<b>Fuel Tank Capacity (L)</b>	56
<b>Trunk volume (L)</b>	475
<b>Drag Coefficient (Cd)</b>	-

## Gearbox

<b>Abbreviation</b>	E-CVT continuously variable transmission
<b>Number of Gears</b>	stepless speed change
<b>Transmission Type</b>	Electronic Continuously Variable Transmission (E-CVT)

## Chassis steering

<b>Drive Type</b>	Front-engine, Front-wheel drive (FF)
<b>Front Suspension Type</b>	MacPherson independent suspension
<b>Rear Suspension Type</b>	Multi-link independent suspension
<b>Power Steering Type</b>	Electric power assistance
<b>Vehicle structure</b>	bearing type

## Seat Configuration

<b>Seat Material</b>	<ul style="list-style-type: none"><li>• Imitation leather</li></ul>
<b>Main seat adjustment</b>	<ul style="list-style-type: none"><li>• Front and rear adjustment;</li><li>• Backrest adjustment;</li><li>• Height adjustment (4-way);</li><li>• Lumbar support (2-way)</li></ul>
<b>Co-seat adjustment method</b>	<ul style="list-style-type: none"><li>• Front and rear adjustment;</li><li>• Backrest adjustment;</li><li>• Height adjustment (4-way)</li></ul>
<b>Electric adjustment of driver's seat and passenger seat</b>	Main •/Deputy •
<b>Front seat functions</b>	<ul style="list-style-type: none"><li>• Heating</li></ul>
<b>Front passenger seat rear adjustable buttons</b>	-
<b>Second row seat adjustment</b>	<ul style="list-style-type: none"><li>• Backrest adjustment</li></ul>
<b>Rear seat folding</b>	<ul style="list-style-type: none"><li>• Proportional down</li></ul>
<b>Front/rear center armrest</b>	Front •/Rear •
<b>Rear cup holder</b>	<ul style="list-style-type: none"><li>•</li></ul>

## Active safety

<b>Anti-lock Braking System (ABS)</b>	•
<b>Electronic Brakeforce Distribution (EBD/CBC)</b>	•
<b>Brake Assist System (EBA/BAS/BA)</b>	•
<b>Traction Control System (ASR/TCS/TRC)</b>	•
<b>Electronic Stability Control (ESC/ESP/DSC)</b>	•
<b>Tire Pressure Monitoring System (TPMS)</b>	•
<b>Seat Belt Reminder</b>	•
<b>ISOFIX Child Seat Anchors</b>	•
<b>Lane Departure Warning System (LDWS)</b>	-
<b>Autonomous Emergency Braking (AEB)</b>	-
<b>Driver Fatigue Detection</b>	-

## Air conditioning/refrigerator

<b>Air conditioning temperature control method</b>	• Automatic air conditioning
<b>Rear Independent Climate Control</b>	-
<b>Rear seat air vents</b>	•
<b>Temperature zone control</b>	•
<b>Car air purifier</b>	-
<b>In-cabin PM2.5 Filter</b>	-

## Passive safety

<b>Driver/passenger airbag</b>	Main •/Deputy •
<b>Front/rear side airbags</b>	Front •/Rear-
<b>Front/rear head airbags (curtain airbags)</b>	Front •/Rear •
<b>Knee airbag</b>	• Main driver knee airbag

## Wheel brake

<b>Front Brake Type</b>	Ventilation disc
<b>Rear Brake Type</b>	Disc
<b>Parking brake type</b>	Electronic Parking

## Wheel brake (continued)

<b>Front Tire Size</b>	225/65 R17
<b>Rear Tire Size</b>	225/65 R17
<b>Spare Tire Size</b>	Not full-size

## Audio/Interior Lighting

<b>Number of speakers</b>	• 8-9 speakers
<b>Touch reading light</b>	•

## Driving functions

<b>Navigation traffic information display</b>	-
<b>Lane assist</b>	-
<b>Lane Keeping Assist System</b>	-
<b>Satellite navigation system</b>	○
<b>Parking Assist</b>	-

## Exterior lighting

<b>Low beam light source</b>	•LED
<b>High beam light source</b>	• Halogen
<b>LED daytime running lights</b>	•
<b>Adaptive high and low beam</b>	-
<b>Automatic headlights</b>	•
<b>Front fog lights</b>	•
<b>Height-adjustable headlights</b>	•
<b>Headlight Delay Off</b>	-
<b>Turn signal lamp</b>	•

## Exterior mirrors

<b>Exterior mirror function</b>	• Electric adjustment; • Electric folding; • Mirror heating
---------------------------------	---

## Appearance/anti-theft

<b>Rim material</b>	• Aluminum alloy
<b>Electric trunk</b>	•
<b>Electronic engine immobilizer</b>	•
<b>Central locking system in the car</b>	•

## Appearance/anti-theft (continued)

<b>Key Type</b>	• Remote key
<b>Keyless start system</b>	•
<b>Keyless entry function</b>	•
<b>Roof rack</b>	•

## Skylight/Glass

<b>Sunroof Type</b>	• Electric sunroof
<b>Front/rear electric windows</b>	Front •/Rear •
<b>One-touch window lifting function</b>	• Full car
<b>Window anti-pinch function</b>	•
<b>Car makeup mirror</b>	•
<b>Rear wiper</b>	•
<b>Rain sensor wiper function</b>	•
<b>Rear side privacy glass</b>	•

## Interior and exterior color

<b>Exterior Color</b>	Wine Red Mica:#78101C; Supersonic Quartz White:#EEEEEE; Platinum Grey:#CDD3D5; Supersonic Titanium Silver:#9C9B97; Ocean Blue:#002859, Black:#000000, Meteor Blue:#003545; Dark Brown Mica:#5B1A21; Mercury Grey Mica:#5A5D64; Starlight Black:#000B0B
<b>Interior Color</b>	Black:#000000, Black, Dark red:#000000/#5C2528, Black, White Ochre:#000000/#DDC9A5, Black yellow, Crystal, Brown:#000000/#916957

## Steering wheel/interior mirror

<b>Steering Wheel Material</b>	• Cortex
<b>Steering wheel position adjustment</b>	• Manual up and down front and rear adjustment
<b>Multi-function steering wheel</b>	•
<b>Heated Steering Wheel</b>	-
<b>Steering wheel memory</b>	-

## Steering wheel/interior mirror (continued)

<b>Trip computer display screen</b>	•
<b>Full LCD instrument panel</b>	-
<b>Interior rearview mirror function</b>	• Manual anti-glare

## Intelligent configuration

<b>Connected Car Services</b>	-
<b>OTA Updates</b>	-

## Driving Control

<b>Automatic parking</b>	•
<b>Hill start assist</b>	•
<b>Engine start-stop technology</b>	•

## Driving Hardware

<b>Front/rear parking radar</b>	Front •/Rear •
<b>Driving Assistance Camera System</b>	• Reversing image

## In-car charging

<b>Multimedia/charging port</b>	•USB
<b>Mobile phone wireless charging function</b>	•

---

"●" = Standard equipment

"-" = Not available

"○" = Optional equipment.

Note: These are Chinese market vehicles. Warranty coverage is not available outside of China.