

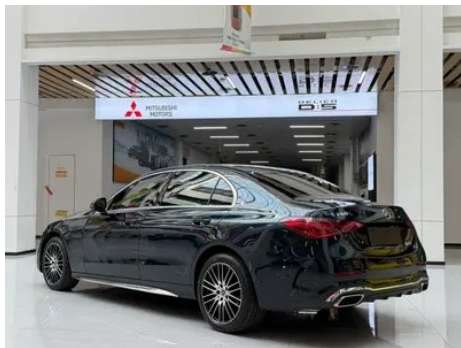
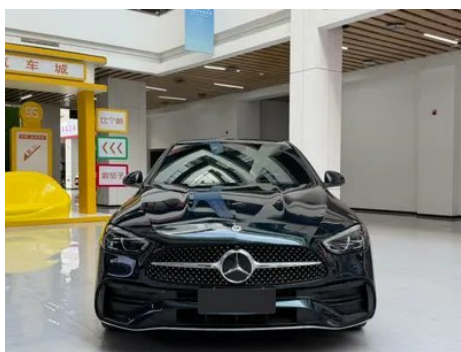
# Vehicle Detail Report

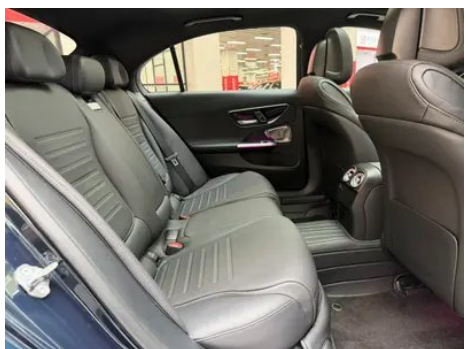
## Mercedes-Benz C-Class 2023 Restyling C 260 L Sports version

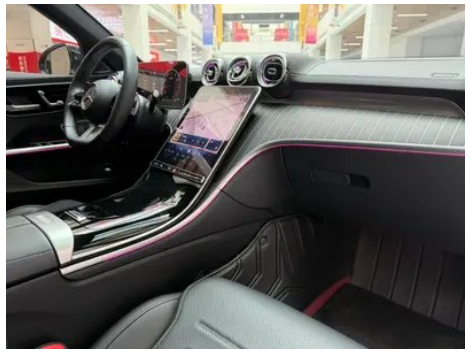
### Basic Information

Brand	Mercedes-Benz
Mileage	73,000 km
Color	Green
First Registration	2023-08-01
Transfer Count	0

### Vehicle Images







## Vehicle Condition

1. Left rear quarter panel, Deformation.

## Configuration Information

### Model Information

<b>Model Name</b>	Mercedes-Benz C-Class 2023 Restyling C 260 L Sports version
<b>Launch Date</b>	2023.03

### Basic parameters

<b>Vehicle Class</b>	Mid-size car
<b>Energy Type</b>	Gasoline + 48V Mild Hybrid System
<b>Maximum Power (kW)</b>	150
<b>Maximum Torque (N·m)</b>	300
<b>Transmission</b>	9-gear manual integration
<b>Body Type</b>	Sedan
<b>Engine</b>	1.5L 204 hp L4
<b>Dimensions (L×W×H) (mm)</b>	4882*1820*1461
<b>Official 0-100 km/h Acceleration (s)</b>	7.7
<b>Top Speed (km/h)</b>	236
<b>Curb Weight (kg)</b>	1740
<b>Maximum Gross Weight (kg)</b>	2260
<b>WLTP Combined Fuel Consumption (L/100km)</b>	6.45

### engine

<b>Engine Model</b>	254 915
<b>Displacement (mL)</b>	1496
<b>Displacement (L)</b>	1.5
<b>Induction Type</b>	Turbocharging
<b>Cylinder Arrangement</b>	L

## engine (continued)

<b>Number of Cylinders</b>	4
<b>Valves per Cylinder</b>	4
<b>Valve Train</b>	DOHC
<b>Maximum Power (PS)</b>	204
<b>Max Power Speed (rpm)</b>	6100
<b>Max Torque Speed (rpm)</b>	1800-4000
<b>Maximum net power (kW)</b>	150
<b>Fuel Grade</b>	95.
<b>Fuel Delivery System</b>	Direct injection
<b>Cylinder Head Material</b>	Aluminum alloy
<b>Cylinder Block Material</b>	Aluminum alloy
<b>Engine layout</b>	Longitudinal

## Screen/System

<b>Central control color screen</b>	<ul style="list-style-type: none"><li>• Touch LCD screen</li></ul>
<b>Infotainment Screen Size</b>	<ul style="list-style-type: none"><li>• 11.9 inches</li></ul>
<b>Bluetooth/In-car Phone</b>	<ul style="list-style-type: none"><li>•</li></ul>
<b>Smartphone Integration/Mirroring</b>	<ul style="list-style-type: none"><li>• Support CarPlay;</li><li>• Support Android Auto</li></ul>
<b>Voice recognition control system</b>	<ul style="list-style-type: none"><li>• Multimedia system;</li><li>• Navigation;</li><li>• Telephone;</li><li>• Air conditioning</li></ul>
<b>Voice wake-up recognition by region</b>	<ul style="list-style-type: none"><li>• Dual Zone</li></ul>
<b>In-vehicle intelligent system</b>	<ul style="list-style-type: none"><li>• MBUX</li></ul>
<b>Voice wake-up word-free</b>	<ul style="list-style-type: none"><li>•</li></ul>
<b>Continuous speech recognition</b>	<ul style="list-style-type: none"><li>•</li></ul>

## Body

<b>Length (mm)</b>	4882
<b>Width (mm)</b>	1820
<b>Height (mm)</b>	1461
<b>Wheelbase (mm)</b>	2954
<b>Front Track (mm)</b>	1589
<b>Rear Track (mm)</b>	1563
<b>Door Opening Type</b>	swing door

## Body (continued)

<b>Number of Doors</b>	4
<b>Number of Seats</b>	5
<b>Fuel Tank Capacity (L)</b>	66
<b>Trunk volume (L)</b>	-
<b>Drag Coefficient (Cd)</b>	-
<b>Approach Angle (°)</b>	15
<b>Departure Angle (°)</b>	18

## Gearbox

<b>Abbreviation</b>	9-gear manual integration
<b>Number of Gears</b>	9
<b>Transmission Type</b>	Automatic Transmission with Manual Mode (AT)

## Chassis steering

<b>Drive Type</b>	Front-engine, Rear-wheel drive (FR)
<b>Front Suspension Type</b>	Multi-link independent suspension
<b>Rear Suspension Type</b>	Multi-link independent suspension
<b>Power Steering Type</b>	Electric power assistance
<b>Vehicle structure</b>	bearing type

## Seat Configuration

<b>Seat Material</b>	<input type="radio"/> Genuine leather; <input type="checkbox"/> Imitation leather
<b>Main seat adjustment</b>	<ul style="list-style-type: none"><li>• Front and rear adjustment;</li><li>• Backrest adjustment;</li><li>• Height adjustment (4-way);</li><li>• Leg rest adjustment;</li><li>• Lumbar support (4-way)</li></ul>
<b>Co-seat adjustment method</b>	<ul style="list-style-type: none"><li>• Front and rear adjustment;</li><li>• Backrest adjustment;</li><li>• Height adjustment (4-way);</li><li>• Leg rest adjustment;</li><li>• Lumbar support (4-way)</li></ul>
<b>Electric adjustment of driver's seat and passenger seat</b>	Main <input type="checkbox"/> /Deputy <input type="checkbox"/>
<b>Front seat functions</b>	<input type="radio"/> Heating (USD 441); <input type="radio"/> Ventilation (USD 1,441)
<b>Electric seat memory function</b>	<input type="radio"/> Driving position
<b>Front passenger seat rear adjustable buttons</b>	<ul style="list-style-type: none"><li>•</li></ul>

## Seat Configuration (continued)

<b>Front/rear center armrest</b>	Front •/Rear •
<b>Rear cup holder</b>	•
<b>Second row seat functions</b>	○ Heating (USD 441)
<b>Sports style seats</b>	•

## Active safety

<b>Anti-lock Braking System (ABS)</b>	•
<b>Electronic Brakeforce Distribution (EBD/CBC)</b>	•
<b>Brake Assist System (EBA/BAS/BA)</b>	•
<b>Traction Control System (ASR/TCS/TRC)</b>	•
<b>Electronic Stability Control (ESC/ESP/DSC)</b>	•
<b>Tire Pressure Monitoring System (TPMS)</b>	• Tire pressure display
<b>Seat Belt Reminder</b>	• Full car
<b>ISOFIX Child Seat Anchors</b>	•
<b>Lane Departure Warning System (LDWS)</b>	•
<b>Autonomous Emergency Braking (AEB)</b>	•
<b>Driver Fatigue Detection</b>	•
<b>Forward Collision Warning (FCW)</b>	•
<b>Emergency Call System (eCall)</b>	•
<b>Built-in Dashcam</b>	•

## Air conditioning/refrigerator

<b>Air conditioning temperature control method</b>	• Automatic air conditioning
<b>Rear Independent Climate Control</b>	-
<b>Rear seat air vents</b>	•
<b>Temperature zone control</b>	•
<b>Car air purifier</b>	•
<b>In-cabin PM2.5 Filter</b>	•

## Air conditioning/refrigerator (continued)

Negative ion generator	<input type="radio"/>
Car fragrance device	<input type="radio"/>

## Passive safety

Driver/passenger airbag	Main •/Deputy •
Front/rear side airbags	Front •/Rear-
Front/rear head airbags (curtain airbags)	Front •/Rear •
Knee airbag	• Main driver knee airbag
Passive pedestrian protection	•

## Wheel brake

Front Brake Type	Ventilation disc
Rear Brake Type	Ventilation disc
Parking brake type	Electronic Parking
Front Tire Size	225/45 R18
Rear Tire Size	255/40 R18
Spare Tire Size	None

## Audio/Interior Lighting

Speaker Brand Name	<input type="radio"/> Burmester Voices of Berlin
Number of speakers	• 5 horns; <input type="radio"/> 15 horns
Interior ambient lighting	• 64 colors

## Driving functions

Navigation traffic information display	•
Lane assist	<input type="radio"/>
Lane Keeping Assist System	•
Cruise control system	• Full speed adaptive cruise
Satellite navigation system	•
Driving assistance level	•L2
Lane centering	<input type="radio"/>
Road traffic sign recognition	<input type="radio"/>
Map Brand	• Gaud
AR real-time navigation	<input type="radio"/> (USD 441)

## Driving functions (continued)

<b>Parking Assist</b>	•
<b>Lane Change Assist</b>	○

## Exterior lighting

<b>Low beam light source</b>	•LED
<b>High beam light source</b>	•LED
<b>LED daytime running lights</b>	•
<b>Adaptive high and low beam</b>	•
<b>Automatic headlights</b>	•
<b>Height-adjustable headlights</b>	•
<b>Headlight Delay Off</b>	•
<b>Lighting features</b>	○ Pixel-based
<b>Turn headlights</b>	○

## Exterior mirrors

<b>Exterior mirror function</b>	• Electric adjustment; • Electric folding; ○ Rearview mirror memory; • Rearview mirror heating; ○ Automatic downturning when reversing; • Automatic folding when locked; ○ Automatic anti-glare
---------------------------------	---

## Appearance/anti-theft

<b>Rim material</b>	• Aluminum alloy
<b>Electric trunk</b>	○(USD 382)
<b>Electronic engine immobilizer</b>	•
<b>Central locking system in the car</b>	•
<b>Key Type</b>	• Remote key
<b>Keyless start system</b>	•
<b>Keyless entry function</b>	○ Full car (USD 721)
<b>Appearance Kit</b>	• Sports style
<b>Hands-free Trunk</b>	○
<b>Remote start function</b>	•

## Skylight/Glass

<b>Sunroof Type</b>	• Sectional electric sunroof
<b>Front/rear electric windows</b>	Front •/Rear •

## Skylight/Glass (continued)

<b>One-touch window lifting function</b>	<ul style="list-style-type: none"><li>• Full car</li></ul>
<b>Window anti-pinch function</b>	<ul style="list-style-type: none"><li>•</li></ul>
<b>Car makeup mirror</b>	<ul style="list-style-type: none"><li>• Main driver's lamp; • co-pilot's lamp</li></ul>
<b>Rear wiper</b>	-
<b>Rain sensor wiper function</b>	<ul style="list-style-type: none"><li>• Rainfall-sensing</li></ul>

## Interior and exterior color

<b>Exterior Color</b>	Lava Red:#B52E39, Turquoise, Green, #193A48; Sea night blue:#143882; Fritillaria white:#E6E6E6; Graphite gray:#4E5158; Time and space silver:#ACACAE; Arctic white:#F4F4F4; Hao Sha Yin:#D7DCDC, Obsidian Black:#000000, Iridium Silver:#D7DBE9
<b>Interior Color</b>	Black/Ocher Brown:#000000/#773B34; Black:#000000; Black/Flame Red:#000000/#621C27; Black/Macchiato Beige:#000000/#D4D0CF; Black/Titanium Grey:#000000/#2C2D31

## Steering wheel/interior mirror

<b>Steering Wheel Material</b>	<ul style="list-style-type: none"><li>• Leather</li></ul>
<b>Steering wheel position adjustment</b>	<ul style="list-style-type: none"><li>• Manual up and down front and rear adjustment; ○ Electric up and down front and rear adjustment</li></ul>
<b>Multi-function steering wheel</b>	<ul style="list-style-type: none"><li>•</li></ul>
<b>Heated Steering Wheel</b>	-
<b>Steering wheel memory</b>	○
<b>Trip computer display screen</b>	<ul style="list-style-type: none"><li>• Color</li></ul>
<b>Full LCD instrument panel</b>	<ul style="list-style-type: none"><li>•</li></ul>
<b>LCD instrument size</b>	<ul style="list-style-type: none"><li>• 12.3 inches</li></ul>
<b>Interior rearview mirror function</b>	<ul style="list-style-type: none"><li>• Manual anti-glare; ○ Automatic anti-glare</li></ul>
<b>Gear shifting</b>	<ul style="list-style-type: none"><li>• Electronic gear shift</li></ul>
<b>HUD Head Up Digital Display</b>	○(USD 1,324)

## Steering wheel/interior mirror (continued)

<b>ETC Device</b>	○(USD 441)
<b>Steering Wheel Shift Paddles</b>	•

## Intelligent configuration

<b>Connected Car Services</b>	•
<b>OTA Updates</b>	•
<b>4G/5G Network</b>	•4G
<b>Mobile APP remote function</b>	• Door control; • Vehicle start-up; • Vehicle condition inquiry/diagnosis; • Vehicle location/vehicle search

## Driving Control

<b>Driving mode switch</b>	• Sport; • Economy; • Standard/Comfort
<b>Automatic parking</b>	•
<b>Hill start assist</b>	•
<b>Energy recovery system</b>	•
<b>Variable steering ratio</b>	•
<b>Engine start-stop technology</b>	•

## Driving Hardware

<b>Front/rear parking radar</b>	Front •/Rear •
<b>Driving Assistance Camera System</b>	• Reversing image

## In-car charging

<b>Multimedia/charging port</b>	•Type-C
<b>Number of USB/Type-C ports</b>	• 3 in the front row/2 in the back row; ○ 4 in the front row/2 in the back row (USD 397)
<b>Mobile phone wireless charging function</b>	• Front row

## Optional Package

## Optional Package (continued)

Optional Package	
	Zhilian package (USD 441; Including: MBUX intelligent human-computer interaction system real-life navigation, MBUX intelligent human-computer interaction system (upgraded version)); Smart package (USD 585; Including: MBUX intelligent human-computer interaction system (upgraded version), in-car air conditioning components, and refreshing function); Zhile package (USD 1,174; Including: Burmester 3D surround stereo sound system and personalized sound effect settings); smart driving package (USD 2,912; Including: rearview mirror component, driver assistance component enhanced version, preventive safety system (PRE-SAFE))

---

"●" = Standard equipment

"-" = Not available

"○" = Optional equipment.

Note: These are Chinese market vehicles. Warranty coverage is not available outside of China.