

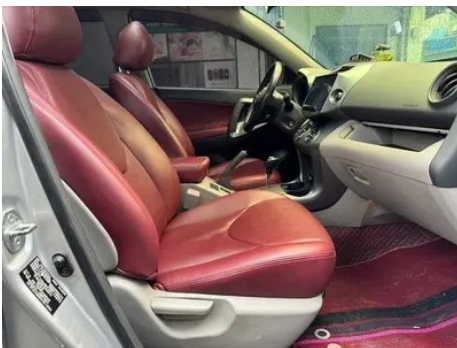
# Vehicle Detail Report

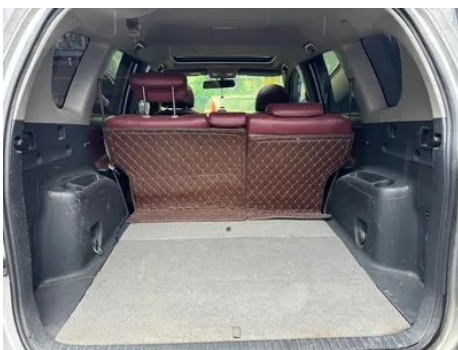
## Toyota RAV4 2011 2.0L Automatic Classic Edition

### Basic Information

Brand	Toyota
Mileage	174,000 km
Color	Silver-gray
First Registration	2011-08-01
Transfer Count	5

### Vehicle Images





## Vehicle Condition

1. Left upper side rail, Paint repair. 2. Right upper side rail, Paint repair. 3. Inner side of left A-pillar, Deformation, Paint repair. 4. Inner side of left C-pillar, Paint repair, Body panel repair. 5. Rear body panel, Deformation. 6. Spare wheel well, Deformation. 7. Driver's seat rails and frame, Signs of removal. 8. Front passenger seat rails and frame, Signs of removal. 9. Left rear quarter panel, Paint repair, Body panel repair. 10. Right rear quarter panel, Paint repair, Body panel repair. 11. Front passenger seat, Modified. 12. Rear seats, Modified.

## Configuration Information

### Model Information

<b>Model Name</b>	Toyota RAV4 2011 2.0L Automatic Classic Edition
<b>Launch Date</b>	2011.08

### Basic parameters

<b>Vehicle Class</b>	Compact SUV
----------------------	-------------

## Basic parameters (continued)

<b>Energy Type</b>	Gasoline
<b>Maximum Power (kW)</b>	110
<b>Maximum Torque (N·m)</b>	192
<b>Transmission</b>	4-speed automatic
<b>Body Type</b>	SUV
<b>Engine</b>	2.0L 150 hp L4
<b>Dimensions (L×W×H) (mm)</b>	4630*1815*1685
<b>Official 0-100 km/h Acceleration (s)</b>	-
<b>Top Speed (km/h)</b>	175
<b>Curb Weight (kg)</b>	1520
<b>Maximum Gross Weight (kg)</b>	-
<b>NEDC Combined Fuel Consumption (L/100km)</b>	8.9

## engine

<b>Engine Model</b>	1AZ-FE
<b>Displacement (mL)</b>	1998
<b>Displacement (L)</b>	2.0
<b>Induction Type</b>	Natural aspiration
<b>Cylinder Arrangement</b>	L
<b>Number of Cylinders</b>	4
<b>Valves per Cylinder</b>	4
<b>Compression Ratio</b>	9.8
<b>Valve Train</b>	DOHC
<b>Bore (mm)</b>	86
<b>Stroke (mm)</b>	86
<b>Maximum Power (PS)</b>	150
<b>Max Power Speed (rpm)</b>	6000
<b>Max Torque Speed (rpm)</b>	4000
<b>Maximum net power (kW)</b>	-
<b>Fuel Grade</b>	95.
<b>Fuel Delivery System</b>	Multi-point EFI
<b>Cylinder Head Material</b>	Aluminum alloy

## engine (continued)

<b>Cylinder Block Material</b>	Aluminum alloy
<b>Engine-specific technologies</b>	VVT-i

## Screen/System

<b>Bluetooth/In-car Phone</b>	-
<b>In-car CD/DVD Player</b>	<ul style="list-style-type: none"><li>• Single disc CD</li></ul>

## Body

<b>Length (mm)</b>	4630
<b>Width (mm)</b>	1815
<b>Height (mm)</b>	1685
<b>Wheelbase (mm)</b>	2660
<b>Front Track (mm)</b>	1560
<b>Rear Track (mm)</b>	1560
<b>Ground Clearance (Fully Loaded) (mm)</b>	190
<b>Door Opening Type</b>	-
<b>Number of Doors</b>	5
<b>Number of Seats</b>	5
<b>Fuel Tank Capacity (L)</b>	60
<b>Trunk volume (L)</b>	1031
<b>Drag Coefficient (Cd)</b>	-

## Gearbox

<b>Abbreviation</b>	4-speed automatic
<b>Number of Gears</b>	4
<b>Transmission Type</b>	Automatic Transmission (AT)

## Chassis steering

<b>Drive Type</b>	Front-engine, Front-wheel drive (FF)
<b>Front Suspension Type</b>	MacPherson independent suspension
<b>Rear Suspension Type</b>	Double wishbone independent suspension
<b>Power Steering Type</b>	Electric power assistance
<b>Vehicle structure</b>	bearing type

## Seat Configuration

<b>Seat Material</b>	<ul style="list-style-type: none"><li>• Fabric</li></ul>
----------------------	--

## Seat Configuration (continued)

<b>Main seat adjustment</b>	<ul style="list-style-type: none"><li>• Front and rear adjustment;</li><li>• Backrest adjustment;</li><li>• Height adjustment (2-way)</li></ul>
<b>Co-seat adjustment method</b>	<ul style="list-style-type: none"><li>• Front and rear adjustment;</li><li>• Backrest adjustment</li></ul>
<b>Electric adjustment of driver's seat and passenger seat</b>	-
<b>Front passenger seat rear adjustable buttons</b>	-
<b>Second row seat adjustment</b>	<ul style="list-style-type: none"><li>• Front and rear adjustment;</li><li>• Backrest adjustment</li></ul>
<b>Rear seat folding</b>	<ul style="list-style-type: none"><li>• Proportional down</li></ul>
<b>Front/rear center armrest</b>	Front •/Rear •
<b>Rear cup holder</b>	<ul style="list-style-type: none"><li>•</li></ul>

## Active safety

<b>Anti-lock Braking System (ABS)</b>	<ul style="list-style-type: none"><li>•</li></ul>
<b>Electronic Brakeforce Distribution (EBD/CBC)</b>	<ul style="list-style-type: none"><li>•</li></ul>
<b>Brake Assist System (EBA/BAS/BA)</b>	-
<b>Traction Control System (ASR/TCS/TRC)</b>	-
<b>Electronic Stability Control (ESC/ESP/DSC)</b>	-
<b>Seat Belt Reminder</b>	<ul style="list-style-type: none"><li>•</li></ul>
<b>ISOFIX Child Seat Anchors</b>	<ul style="list-style-type: none"><li>•</li></ul>
<b>Lane Departure Warning System (LDWS)</b>	-
<b>Autonomous Emergency Braking (AEB)</b>	-
<b>Driver Fatigue Detection</b>	-

## Air conditioning/refrigerator

<b>Air conditioning temperature control method</b>	<ul style="list-style-type: none"><li>• Automatic air conditioning</li></ul>
<b>Rear Independent Climate Control</b>	-
<b>Rear seat air vents</b>	-
<b>Temperature zone control</b>	<ul style="list-style-type: none"><li>•</li></ul>

## Air conditioning/refrigerator (continued)

<b>Car air purifier</b>	-
<b>In-cabin PM2.5 Filter</b>	-

## Passive safety

<b>Driver/passenger airbag</b>	Main •/Deputy •
<b>Front/rear side airbags</b>	Front •/Rear-
<b>Front/rear head airbags (curtain airbags)</b>	-

## Wheel brake

<b>Front Brake Type</b>	Ventilation disc
<b>Rear Brake Type</b>	Disc
<b>Parking brake type</b>	handbrake
<b>Front Tire Size</b>	225/65 R17
<b>Rear Tire Size</b>	225/65 R17
<b>Spare Tire Size</b>	Full size

## Audio/Interior Lighting

<b>Number of speakers</b>	• 4-5 speakers
---------------------------	----------------

## Driving functions

<b>Navigation traffic information display</b>	-
<b>Lane assist</b>	-
<b>Lane Keeping Assist System</b>	-
<b>Satellite navigation system</b>	-
<b>Parking Assist</b>	-

## Exterior lighting

<b>LED daytime running lights</b>	-
<b>Adaptive high and low beam</b>	-
<b>Automatic headlights</b>	-
<b>Front fog lights</b>	•
<b>Height-adjustable headlights</b>	•
<b>Headlight Delay Off</b>	-

## Exterior mirrors

<b>Exterior mirror function</b>	• Electric adjustment; • Mirror heating
---------------------------------	---

## Appearance/anti-theft

<b>Rim material</b>	• Aluminum alloy
<b>Electronic engine immobilizer</b>	•
<b>Central locking system in the car</b>	•
<b>Key Type</b>	• Remote key
<b>Keyless start system</b>	-

## Skylight/Glass

<b>Front/rear electric windows</b>	Front •/Rear •
<b>Window anti-pinch function</b>	•
<b>Car makeup mirror</b>	•
<b>Rear wiper</b>	•
<b>Rear side privacy glass</b>	•

## Interior and exterior color

<b>Exterior Color</b>	super white #FDFDFD Silver #BABABA biotite #000000 red mica metallic #C4283E gray metallic #3D4142 dark brown mica metallic #52433A
-----------------------	---

## Steering wheel/interior mirror

<b>Steering wheel position adjustment</b>	• Manual up and down front and rear adjustment
<b>Multi-function steering wheel</b>	•
<b>Heated Steering Wheel</b>	-
<b>Steering wheel memory</b>	-
<b>Trip computer display screen</b>	•
<b>Full LCD instrument panel</b>	-
<b>Interior rearview mirror function</b>	• Manual anti-glare

## Intelligent configuration

<b>Connected Car Services</b>	-
<b>OTA Updates</b>	-

## Driving Control

<b>Automatic parking</b>	-
--------------------------	---

## Driving Hardware

## Driving Hardware (continued)

### Front/rear parking radar

-

"●" = Standard equipment

"-" = Not available

"○" = Optional equipment.

Note: These are Chinese market vehicles. Warranty coverage is not available outside of China.