

# Vehicle Detail Report

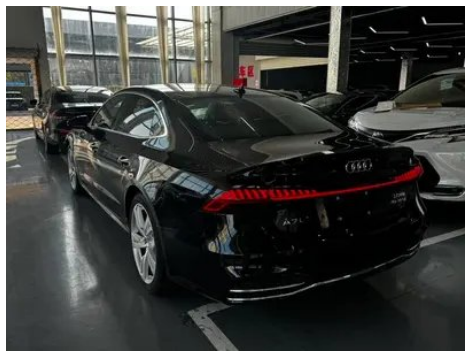
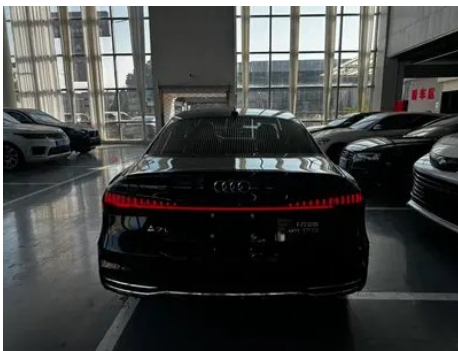
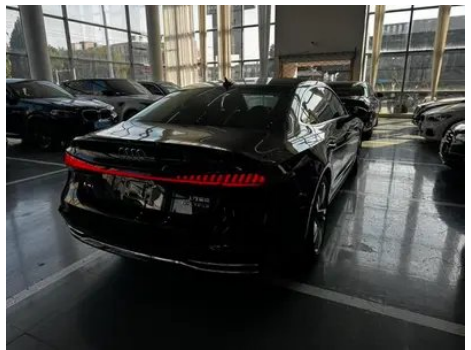
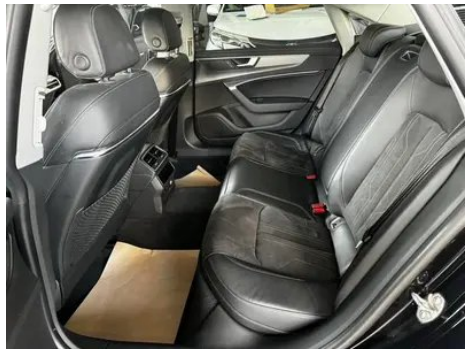
## Audi A7L 2022 45 TFSI S-line Dream Building Youth Edition

### Basic Information

Brand	Audi
Mileage	58,000 km
Color	Black
First Registration	2023-07-01
Transfer Count	0

### Vehicle Images





## Vehicle Condition

1. Radiator support, Signs of removal. 2. Left rear quarter panel, Paint repair, Body panel repair. 3. Right rear quarter panel, Paint repair, Body panel repair.

## Configuration Information

### Model Information

<b>Model Name</b>	Audi A7L 2022 45 TFSI S-line Dream Building Youth Edition
<b>Launch Date</b>	2022.05

### Basic parameters

<b>Vehicle Class</b>	Mid-size and large cars
<b>Energy Type</b>	Gasoline
<b>Maximum Power (kW)</b>	180

## Basic parameters (continued)

<b>Maximum Torque (N·m)</b>	370
<b>Transmission</b>	7-speed wet dual-clutch
<b>Body Type</b>	Sedan
<b>Engine</b>	2.0T 245 horsepower L4
<b>Dimensions (L×W×H) (mm)</b>	5076*1908*1429
<b>Official 0-100 km/h Acceleration (s)</b>	7.9
<b>Top Speed (km/h)</b>	208
<b>Curb Weight (kg)</b>	1855
<b>Maximum Gross Weight (kg)</b>	2335
<b>WLTP Combined Fuel Consumption (L/100km)</b>	7.4

## engine

<b>Engine Model</b>	DTK
<b>Displacement (mL)</b>	1984
<b>Displacement (L)</b>	2.0
<b>Induction Type</b>	Turbocharging
<b>Cylinder Arrangement</b>	L
<b>Number of Cylinders</b>	4
<b>Valves per Cylinder</b>	4
<b>Valve Train</b>	DOHC
<b>Maximum Power (PS)</b>	245
<b>Max Power Speed (rpm)</b>	5000-6500
<b>Max Torque Speed (rpm)</b>	1600-4300
<b>Maximum net power (kW)</b>	180
<b>Fuel Grade</b>	95.
<b>Fuel Delivery System</b>	Direct injection
<b>Cylinder Head Material</b>	Aluminum alloy
<b>Cylinder Block Material</b>	Cast iron
<b>Engine layout</b>	Longitudinal

## Screen/System

<b>Central control color screen</b>	<ul style="list-style-type: none"><li>• Touch LCD screen</li></ul>
<b>Infotainment Screen Size</b>	<ul style="list-style-type: none"><li>• 10.1 inches</li></ul>

## Screen/System (continued)

<b>Bluetooth/In-car Phone</b>	<ul style="list-style-type: none"><li>•</li></ul>
<b>Smartphone Integration/Mirroring</b>	<ul style="list-style-type: none"><li>• Apple CarPlay support</li></ul>
<b>Voice recognition control system</b>	<ul style="list-style-type: none"><li>• Multimedia system;</li><li>• Navigation;</li><li>• Telephone;</li><li>• Air conditioning</li></ul>
<b>In-car CD/DVD Player</b>	<ul style="list-style-type: none"><li>• Single DVD</li></ul>
<b>Center console screen size</b>	<ul style="list-style-type: none"><li>• 8.6 inches</li></ul>
<b>In-vehicle intelligent system</b>	<ul style="list-style-type: none"><li>• Audi Connect</li></ul>

## Body

<b>Length (mm)</b>	5076
<b>Width (mm)</b>	1908
<b>Height (mm)</b>	1429
<b>Wheelbase (mm)</b>	3026
<b>Front Track (mm)</b>	1644
<b>Rear Track (mm)</b>	1629
<b>Door Opening Type</b>	swing door
<b>Number of Doors</b>	4
<b>Number of Seats</b>	5
<b>Fuel Tank Capacity (L)</b>	73
<b>Trunk volume (L)</b>	384
<b>Drag Coefficient (Cd)</b>	-
<b>Approach Angle (°)</b>	13
<b>Departure Angle (°)</b>	15
<b>Minimum Turning Radius (m)</b>	6.3

## Gearbox

<b>Abbreviation</b>	7-speed wet dual-clutch
<b>Number of Gears</b>	7
<b>Transmission Type</b>	Wet Dual-Clutch Transmission (DCT)

## Chassis steering

<b>Drive Type</b>	Front-engine, Front-wheel drive (FF)
<b>Front Suspension Type</b>	Five-link independent suspension
<b>Rear Suspension Type</b>	Five-link independent suspension
<b>Power Steering Type</b>	Electric power assistance

## Chassis steering (continued)

<b>Vehicle structure</b>	bearing type
--------------------------	--------------

## Seat Configuration

<b>Seat Material</b>	<ul style="list-style-type: none"><li>• Leather/suede mix and match</li></ul>
<b>Main seat adjustment</b>	<ul style="list-style-type: none"><li>• Front and rear adjustment;</li><li>• Backrest adjustment;</li><li>• Height adjustment (4-way);</li><li>• Lumbar support (4-way)</li></ul>
<b>Co-seat adjustment method</b>	<ul style="list-style-type: none"><li>• Front and rear adjustment;</li><li>• Backrest adjustment;</li><li>• Height adjustment (4-way);</li><li>• Lumbar support (4-way)</li></ul>
<b>Electric adjustment of driver's seat and passenger seat</b>	Main •/Deputy •
<b>Front passenger seat rear adjustable buttons</b>	-
<b>Front/rear center armrest</b>	Front •/Rear •
<b>Rear cup holder</b>	<ul style="list-style-type: none"><li>•</li></ul>
<b>Sports style seats</b>	<ul style="list-style-type: none"><li>•</li></ul>

## Active safety

<b>Anti-lock Braking System (ABS)</b>	<ul style="list-style-type: none"><li>•</li></ul>
<b>Electronic Brakeforce Distribution (EBD/CBC)</b>	<ul style="list-style-type: none"><li>•</li></ul>
<b>Brake Assist System (EBA/BAS/BA)</b>	<ul style="list-style-type: none"><li>•</li></ul>
<b>Traction Control System (ASR/TCS/TRC)</b>	<ul style="list-style-type: none"><li>•</li></ul>
<b>Electronic Stability Control (ESC/ESP/DSC)</b>	<ul style="list-style-type: none"><li>•</li></ul>
<b>Tire Pressure Monitoring System (TPMS)</b>	<ul style="list-style-type: none"><li>• Tire pressure alarm</li></ul>
<b>Seat Belt Reminder</b>	<ul style="list-style-type: none"><li>• Front row</li></ul>
<b>ISOFIX Child Seat Anchors</b>	<ul style="list-style-type: none"><li>•</li></ul>
<b>Lane Departure Warning System (LDWS)</b>	<ul style="list-style-type: none"><li>•</li></ul>
<b>Autonomous Emergency Braking (AEB)</b>	<ul style="list-style-type: none"><li>•</li></ul>
<b>Driver Fatigue Detection</b>	-
<b>Forward Collision Warning (FCW)</b>	<ul style="list-style-type: none"><li>•</li></ul>

## Active safety (continued)

<b>Emergency Call System (eCall)</b>	•
--------------------------------------	---

## Air conditioning/refrigerator

<b>Air conditioning temperature control method</b>	• Automatic air conditioning
<b>Rear Independent Climate Control</b>	•
<b>Rear seat air vents</b>	•
<b>Temperature zone control</b>	•
<b>Car air purifier</b>	-
<b>In-cabin PM2.5 Filter</b>	-

## Passive safety

<b>Driver/passenger airbag</b>	Main •/Deputy •
<b>Front/rear side airbags</b>	Front •/Rear-
<b>Front/rear head airbags (curtain airbags)</b>	Front •/Rear •
<b>Passive pedestrian protection</b>	•

## Wheel brake

<b>Front Brake Type</b>	Ventilation disc
<b>Rear Brake Type</b>	Ventilation disc
<b>Parking brake type</b>	Electronic Parking
<b>Front Tire Size</b>	245/45 R19
<b>Rear Tire Size</b>	245/45 R19
<b>Spare Tire Size</b>	Not full-size

## Audio/Interior Lighting

<b>Number of speakers</b>	• 8-9 speakers
<b>Interior ambient lighting</b>	• 30 colors
<b>Touch reading light</b>	•

## Driving functions

<b>Navigation traffic information display</b>	•
<b>Lane assist</b>	-
<b>Lane Keeping Assist System</b>	-
<b>Cruise control system</b>	• Cruise control

## Driving functions (continued)

<b>Satellite navigation system</b>	•
<b>Parking Assist</b>	-

## Exterior lighting

<b>Low beam light source</b>	•LED
<b>High beam light source</b>	•LED
<b>LED daytime running lights</b>	•
<b>Adaptive high and low beam</b>	•
<b>Automatic headlights</b>	•
<b>Height-adjustable headlights</b>	•
<b>Headlight Delay Off</b>	•
<b>Lighting features</b>	• Matrix
<b>Turn headlights</b>	•
<b>Headlight rain and fog mode</b>	•
<b>Headlight cleaning device</b>	•

## Exterior mirrors

<b>Exterior mirror function</b>	•Electric adjustment; •Electric folding; •Rearview mirror heating; •Automatically turn down when reversing; •Automatically fold when locking the car
---------------------------------	--

## Appearance/anti-theft

<b>Rim material</b>	• Aluminum alloy
<b>Electronic engine immobilizer</b>	•
<b>Central locking system in the car</b>	•
<b>Key Type</b>	• Remote key
<b>Keyless start system</b>	•
<b>Keyless entry function</b>	• Full vehicle
<b>Appearance Kit</b>	• Sports style
<b>Frameless door design</b>	•

## Skylight/Glass

<b>Sunroof Type</b>	• Electric sunroof
---------------------	--------------------

## Skylight/Glass (continued)

<b>Front/rear electric windows</b>	Front •/Rear •
<b>One-touch window lifting function</b>	• Full vehicle
<b>Window anti-pinch function</b>	•
<b>Car makeup mirror</b>	• Main driver's lamp; • co-pilot's lamp
<b>Rear wiper</b>	-
<b>Rain sensor wiper function</b>	• Rainfall-sensing

## Interior and exterior color

<b>Exterior Color</b>	Xinghe Blue #073046 Chixia Zhu #270C22 Bright Moon White #FFFFFF Gentle Breeze Gray #B1B1B1 dark night #000000 Pearlescent silver #D3D3D3
<b>Interior Color</b>	quiet black #000000 Warm Brown #433930

## Steering wheel/interior mirror

<b>Steering Wheel Material</b>	• Leather
<b>Steering wheel position adjustment</b>	• Manual up and down front and rear adjustment
<b>Multi-function steering wheel</b>	•
<b>Heated Steering Wheel</b>	-
<b>Steering wheel memory</b>	-
<b>Trip computer display screen</b>	• Color
<b>Full LCD instrument panel</b>	•
<b>LCD instrument size</b>	• 12.3 inches
<b>Interior rearview mirror function</b>	• Automatic anti-glare
<b>Gear shifting</b>	• Electronic gear shift
<b>Steering Wheel Shift Paddles</b>	•

## Intelligent configuration

<b>Connected Car Services</b>	•
<b>OTA Updates</b>	-
<b>4G/5G Network</b>	•4G;•5G

## Intelligent configuration (continued)

<b>Mobile APP remote function</b>	<ul style="list-style-type: none"><li>•</li></ul>
<b>V2X Communications</b>	<ul style="list-style-type: none"><li>•</li></ul>

## Driving Control

<b>Driving mode switch</b>	<ul style="list-style-type: none"><li>• Sport;</li><li>• Economy;</li><li>• Standard/Comfort</li></ul>
<b>Automatic parking</b>	<ul style="list-style-type: none"><li>•</li></ul>
<b>Hill start assist</b>	<ul style="list-style-type: none"><li>•</li></ul>
<b>Variable steering ratio</b>	<ul style="list-style-type: none"><li>•</li></ul>
<b>Engine start-stop technology</b>	<ul style="list-style-type: none"><li>•</li></ul>

## Driving Hardware

<b>Front/rear parking radar</b>	Front •/Rear •
<b>Driving Assistance Camera System</b>	<ul style="list-style-type: none"><li>• Reversing image</li></ul>
<b>Front perception camera</b>	<ul style="list-style-type: none"><li>• Monocular</li></ul>
<b>Number of cameras</b>	<ul style="list-style-type: none"><li>• 2</li></ul>
<b>Number of ultrasonic radars</b>	<ul style="list-style-type: none"><li>• 8 pieces</li></ul>

## In-car charging

<b>Multimedia/charging port</b>	<ul style="list-style-type: none"><li>• Type-C</li></ul>
<b>Number of USB/Type-C ports</b>	<ul style="list-style-type: none"><li>• 2 in the front row/2 in the back row</li></ul>
<b>Mobile phone wireless charging function</b>	<ul style="list-style-type: none"><li>• Front row</li></ul>
<b>Luggage compartment 12V power socket</b>	<ul style="list-style-type: none"><li>•</li></ul>

## Optional Package

<b>Optional Package</b>	Enterprising Freshman Style Kit (8800 yuan Contains Carbon fiber mirror housing Carbon fiber rear wing Exclusive red trim Custom welcome lamp)
-------------------------	--

---

"●" = Standard equipment

"□" = Not available

"○" = Optional equipment.

Note: These are Chinese market vehicles. Warranty coverage is not available outside of China.