

# Vehicle Detail Report

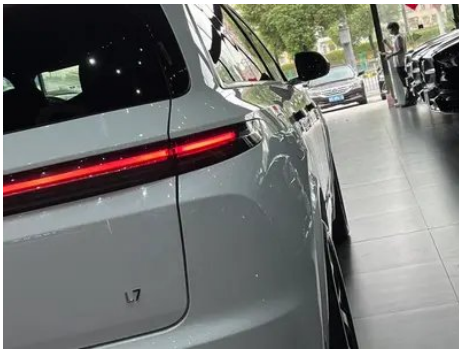
## Li Auto L7 2023 Pro version

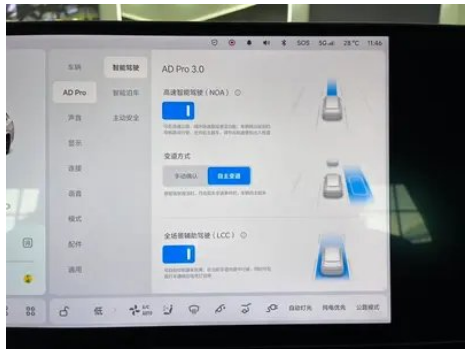
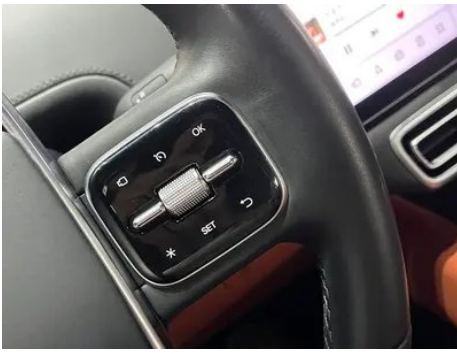
### Basic Information

Brand	Li Auto
Mileage	45,000 km
Color	White
First Registration	2024-01-01
Transfer Count	0

### Vehicle Images







## Vehicle Condition

1. Left front door, Paint repair. 2. Right front door, Paint repair. 3. Left rear door, Paint repair. 4. Right rear door, Body panel repair. 5. Right front fender, Body panel repair. 6. Left rocker panel exterior trim, Scratch damage.

## Configuration Information

### Model Information

<b>Model Name</b>	Li Auto L7 2023 Pro
<b>Launch Date</b>	2022.09

### Basic parameters

<b>Vehicle Class</b>	Mid-size and large SUVs
<b>Energy Type</b>	Extended Range Electric Vehicle (EREV)
<b>Maximum Power (kW)</b>	113
<b>Maximum Torque (N·m)</b>	-
<b>Transmission</b>	Electric vehicle single speed gearbox
<b>Body Type</b>	SUV
<b>Engine</b>	Extended range 154 horsepower
<b>Dimensions (L×W×H) (mm)</b>	5050*1995*1750
<b>Official 0-100 km/h Acceleration (s)</b>	5.3
<b>Top Speed (km/h)</b>	180
<b>Curb Weight (kg)</b>	2450
<b>Maximum Gross Weight (kg)</b>	3080
<b>Fast Charging Time (h)</b>	0.5
<b>Slow Charging Time (h)</b>	6.5
<b>Electric Motor (PS)</b>	449
<b>Fast Charging Range (%)</b>	20-80
<b>Electricity Consumption in Fuel Equivalent (L/100km)</b>	2.48

## Basic parameters (continued)

<b>WLTC Electric Range (km)</b>	170
<b>Fuel Consumption with Depleted Battery (L/100km)</b>	7.6
<b>WLTP Combined Fuel Consumption (L/100km)</b>	0.85
<b>CLTC Electric Range (km)</b>	210
<b>Battery slow charging capacity range (%)</b>	0-100

## engine

<b>Engine Model</b>	L2E15M
<b>Displacement (mL)</b>	1496
<b>Displacement (L)</b>	1.5
<b>Induction Type</b>	Turbocharging
<b>Cylinder Arrangement</b>	L
<b>Number of Cylinders</b>	4
<b>Valves per Cylinder</b>	4
<b>Valve Train</b>	DOHC
<b>Maximum Power (PS)</b>	154
<b>Max Power Speed (rpm)</b>	-
<b>Max Torque Speed (rpm)</b>	-
<b>Maximum net power (kW)</b>	110
<b>Fuel Grade</b>	95.
<b>Fuel Delivery System</b>	Direct injection
<b>Cylinder Head Material</b>	Aluminum alloy
<b>Cylinder Block Material</b>	Aluminum alloy
<b>Engine layout</b>	Horizontal

## Electric Motor

<b>Motor Type</b>	Permanent magnet/synchronous
<b>Total Electric Motor Power (kW)</b>	330
<b>Total Electric Motor Torque (N·m)</b>	620
<b>Front Electric Motor Max Power (kW)</b>	130
<b>Front Electric Motor Max Torque (N·m)</b>	220

## Electric Motor (continued)

<b>System total power (kW)</b>	330
<b>System comprehensive torque (N·m)</b>	620
<b>Number of drive motors</b>	Dual motors
<b>Motor Layout</b>	Front-mounted Rear-mounted
<b>Battery Type</b>	Ternary lithium battery
<b>Battery Capacity (kWh)</b>	40.9
<b>Total Electric Motor Power (PS)</b>	449
<b>Rear Electric Motor Max Power (kW)</b>	200
<b>Rear Electric Motor Max Torque (N·m)</b>	400
<b>Battery Cell Brand</b>	Ningde Times
<b>Battery Cooling System</b>	Liquid cooling
<b>Power consumption per 100 kilometers (kWh/100km)</b>	21.9
<b>Fast charging function</b>	Support
<b>WLTC comprehensive range (km)</b>	1100
<b>Slow charging port location</b>	Rear right side of the car
<b>System comprehensive power (Ps)</b>	449
<b>Rear motor model</b>	TZ220XS066
<b>Fast charging port location</b>	Rear right side of the car
<b>External AC discharge power (kW)</b>	3.5
<b>Minimum allowable value of external discharge (%)</b>	20
<b>Front motor model</b>	TZ180XS008
<b>Fast Charging Power (kW)</b>	75
<b>Battery unique technology</b>	Using flame retardant materials and thermal runaway protection technology
<b>CLTC comprehensive endurance (km)</b>	1315
<b>Charging pile price (yuan)</b>	5000

## Screen/System

<b>Central control color screen</b>	<ul style="list-style-type: none"><li>• Touch LCD screen</li></ul>
<b>Infotainment Screen Size</b>	<ul style="list-style-type: none"><li>• 15.7 inches</li></ul>
<b>Bluetooth/In-car Phone</b>	<ul style="list-style-type: none"><li>•</li></ul>
<b>Voice recognition control system</b>	<ul style="list-style-type: none"><li>• Multimedia system;</li><li>• Navigation;</li><li>• Telephone;</li><li>• Air conditioning;</li><li>• Windows;</li><li>• Seat heating;</li><li>• Seat ventilation;</li><li>• Seat massage</li></ul>
<b>Voice wake-up recognition by region</b>	<ul style="list-style-type: none"><li>• Four areas</li></ul>
<b>Vehicle system storage (GB)</b>	<ul style="list-style-type: none"><li>•128</li></ul>
<b>App Store</b>	<ul style="list-style-type: none"><li>•</li></ul>
<b>Central control screen type</b>	<ul style="list-style-type: none"><li>•LCD</li></ul>
<b>Central control screen resolution</b>	<ul style="list-style-type: none"><li>•3K</li></ul>
<b>Central control screen pixel density</b>	<ul style="list-style-type: none"><li>•210PPI</li></ul>
<b>Passenger entertainment screen size</b>	<ul style="list-style-type: none"><li>• 15.7 inches</li></ul>
<b>Passenger screen type</b>	<ul style="list-style-type: none"><li>•LCD</li></ul>
<b>Passenger screen resolution</b>	<ul style="list-style-type: none"><li>•3K</li></ul>
<b>Passenger screen pixel density</b>	<ul style="list-style-type: none"><li>•210PPI</li></ul>
<b>Voice assistant wake-up word</b>	<ul style="list-style-type: none"><li>• Ideal classmate</li></ul>
<b>Voice wake-up word-free</b>	<ul style="list-style-type: none"><li>•</li></ul>
<b>Continuous speech recognition</b>	<ul style="list-style-type: none"><li>•</li></ul>
<b>See and Say</b>	<ul style="list-style-type: none"><li>•</li></ul>
<b>Car Intelligent Chip</b>	<ul style="list-style-type: none"><li>• Qualcomm Snapdragon 8155</li></ul>
<b>Multi-finger flying screen control</b>	<ul style="list-style-type: none"><li>•</li></ul>
<b>Vehicle system memory (GB)</b>	<ul style="list-style-type: none"><li>•12</li></ul>
<b>Gesture Control</b>	<ul style="list-style-type: none"><li>•</li></ul>
<b>Voiceprint Recognition</b>	<ul style="list-style-type: none"><li>•</li></ul>

## Body

## Body (continued)

<b>Length (mm)</b>	5050
<b>Width (mm)</b>	1995
<b>Height (mm)</b>	1750
<b>Wheelbase (mm)</b>	3005
<b>Front Track (mm)</b>	1725
<b>Rear Track (mm)</b>	1741
<b>Door Opening Type</b>	swing door
<b>Number of Doors</b>	5
<b>Number of Seats</b>	5
<b>Fuel Tank Capacity (L)</b>	65
<b>Trunk volume (L)</b>	801
<b>Drag Coefficient (Cd)</b>	-
<b>Approach Angle (°)</b>	19
<b>Departure Angle (°)</b>	21

## Gearbox

<b>Abbreviation</b>	Electric vehicle single speed gearbox
<b>Number of Gears</b>	1
<b>Transmission Type</b>	Fixed Gear Ratio Transmission

## Chassis steering

<b>Drive Type</b>	Dual-motor All-wheel Drive
<b>Four-wheel drive</b>	Electric four-wheel drive
<b>Front Suspension Type</b>	Double wishbone independent suspension
<b>Rear Suspension Type</b>	Five-link independent suspension
<b>Power Steering Type</b>	Electric power assistance
<b>Vehicle structure</b>	bearing type

## Seat Configuration

<b>Seat Material</b>	• Leather
<b>Main seat adjustment</b>	• Front and rear adjustment; • Backrest adjustment; • Height adjustment (4-way); • Lumbar support (4-way)
<b>Co-seat adjustment method</b>	• Front and rear adjustment; • Backrest adjustment; • Height adjustment (4-way); • Lumbar support (4-way)

## Seat Configuration (continued)

<b>Electric adjustment of driver's seat and passenger seat</b>	Main •/Deputy •
<b>Front seat functions</b>	• Heating; • Ventilation; • Massage
<b>Electric seat memory function</b>	• driving position; • co-pilot position
<b>Front passenger seat rear adjustable buttons</b>	•
<b>Second row seat adjustment</b>	• Backrest adjustment; • Lumbar adjustment
<b>Rear seat folding</b>	• Proportional down
<b>Front/rear center armrest</b>	Front •/Rear •
<b>Rear cup holder</b>	•
<b>Second row seat functions</b>	• Heating; • Ventilation; • Massage
<b>Electric folding rear seats</b>	•
<b>Second row seats electrically adjustable</b>	•

## Active safety

<b>Anti-lock Braking System (ABS)</b>	•
<b>Electronic Brakeforce Distribution (EBD/CBC)</b>	•
<b>Brake Assist System (EBA/BAS/BA)</b>	•
<b>Traction Control System (ASR/TCS/TRC)</b>	•
<b>Electronic Stability Control (ESC/ESP/DSC)</b>	•
<b>Tire Pressure Monitoring System (TPMS)</b>	• Tire pressure display
<b>Seat Belt Reminder</b>	• Full car
<b>ISOFIX Child Seat Anchors</b>	•
<b>Lane Departure Warning System (LDWS)</b>	•
<b>Autonomous Emergency Braking (AEB)</b>	•
<b>Driver Fatigue Detection</b>	•
<b>Forward Collision Warning (FCW)</b>	•

## Active safety (continued)

<b>Rear Collision Warning</b>	•
<b>Low Speed Alert</b>	•
<b>Emergency Call System (eCall)</b>	•
<b>Built-in Dashcam</b>	•
<b>Door Opening Warning (DOW)</b>	•
<b>Sentry Mode</b>	•

## Air conditioning/refrigerator

<b>Air conditioning temperature control method</b>	• Automatic air conditioning
<b>Rear Independent Climate Control</b>	•
<b>Rear seat air vents</b>	•
<b>Temperature zone control</b>	•
<b>Car air purifier</b>	•
<b>In-cabin PM2.5 Filter</b>	•
<b>Air quality monitoring</b>	•

## Passive safety

<b>Driver/passenger airbag</b>	Main •/Deputy •
<b>Front/rear side airbags</b>	Front •/Rear •
<b>Front/rear head airbags (curtain airbags)</b>	Front •/Rear •

## Wheel brake

<b>Front Brake Type</b>	Ventilation disc
<b>Rear Brake Type</b>	Ventilation disc
<b>Parking brake type</b>	Electronic Parking
<b>Front Tire Size</b>	255/50 R20
<b>Rear Tire Size</b>	255/50 R20
<b>Spare Tire Size</b>	-

## Audio/Interior Lighting

<b>Number of speakers</b>	• 19 Horn
<b>Interior ambient lighting</b>	• 256 color
<b>Touch reading light</b>	•
<b>Dolby Atmos</b>	•

## Driving functions

## Driving functions (continued)

<b>Navigation traffic information display</b>	<ul style="list-style-type: none"><li>•</li></ul>
<b>Lane assist</b>	<ul style="list-style-type: none"><li>•</li></ul>
<b>Lane Keeping Assist System</b>	<ul style="list-style-type: none"><li>•</li></ul>
<b>Cruise control system</b>	<ul style="list-style-type: none"><li>• Full speed adaptive cruise</li></ul>
<b>Satellite navigation system</b>	<ul style="list-style-type: none"><li>•</li></ul>
<b>Driving assistance level</b>	<ul style="list-style-type: none"><li>• L2</li></ul>
<b>Rear Cross Traffic Alert</b>	<ul style="list-style-type: none"><li>•</li></ul>
<b>Lane centering</b>	<ul style="list-style-type: none"><li>•</li></ul>
<b>Road traffic sign recognition</b>	<ul style="list-style-type: none"><li>•</li></ul>
<b>Map Brand</b>	<ul style="list-style-type: none"><li>• Gaud</li></ul>
<b>Remote Parking</b>	<ul style="list-style-type: none"><li>•</li></ul>
<b>Driver assistance systems</b>	<ul style="list-style-type: none"><li>• The ideal AD Pro</li></ul>
<b>High-precision map</b>	<ul style="list-style-type: none"><li>•</li></ul>
<b>Remote Summon</b>	<ul style="list-style-type: none"><li>•</li></ul>
<b>Hands-off detection</b>	<ul style="list-style-type: none"><li>•</li></ul>
<b>Start reminder</b>	<ul style="list-style-type: none"><li>•</li></ul>
<b>Parking Assist</b>	<ul style="list-style-type: none"><li>•</li></ul>
<b>Lane Change Assist</b>	<ul style="list-style-type: none"><li>•</li></ul>
<b>Automatic Ramp Entry/Exit Assist</b>	<ul style="list-style-type: none"><li>•</li></ul>
<b>Highway sections</b>	<ul style="list-style-type: none"><li>• Expressway section</li></ul>

## Exterior lighting

<b>Low beam light source</b>	<ul style="list-style-type: none"><li>• LED</li></ul>
<b>High beam light source</b>	<ul style="list-style-type: none"><li>• LED</li></ul>
<b>LED daytime running lights</b>	<ul style="list-style-type: none"><li>•</li></ul>
<b>Adaptive high and low beam</b>	<ul style="list-style-type: none"><li>•</li></ul>
<b>Automatic headlights</b>	<ul style="list-style-type: none"><li>•</li></ul>
<b>Height-adjustable headlights</b>	<ul style="list-style-type: none"><li>•</li></ul>
<b>Headlight Delay Off</b>	<ul style="list-style-type: none"><li>•</li></ul>
<b>Turn signal lamp</b>	<ul style="list-style-type: none"><li>•</li></ul>

## Exterior mirrors

<b>Exterior mirror function</b>	<ul style="list-style-type: none"><li>• Electric adjustment;</li><li>• Electric folding;</li><li>• Rearview mirror memory;</li><li>• Rearview mirror heating;</li><li>• Automatic downturning when reversing;</li><li>• Automatic folding when locked;</li><li>• Automatic anti-glare</li></ul>
---------------------------------	-------------------------------------------------------------------------------------------------------------------------------------------------------------------------------------------------------------------------------------------------------------------------------------------------

## Appearance/anti-theft

<b>Rim material</b>	<ul style="list-style-type: none"><li>• Aluminum alloy</li></ul>
<b>Electric trunk</b>	<ul style="list-style-type: none"><li>•</li></ul>
<b>Electronic engine immobilizer</b>	<ul style="list-style-type: none"><li>•</li></ul>
<b>Central locking system in the car</b>	<ul style="list-style-type: none"><li>•</li></ul>
<b>Key Type</b>	<ul style="list-style-type: none"><li>• Remote key;</li><li>• Bluetooth key</li></ul>
<b>Keyless start system</b>	<ul style="list-style-type: none"><li>•</li></ul>
<b>Keyless entry function</b>	<ul style="list-style-type: none"><li>• Full car</li></ul>
<b>Hands-free Trunk</b>	<ul style="list-style-type: none"><li>•</li></ul>
<b>Electric trunk position memory</b>	<ul style="list-style-type: none"><li>•</li></ul>
<b>Remote start function</b>	<ul style="list-style-type: none"><li>•</li></ul>
<b>Battery preheating</b>	<ul style="list-style-type: none"><li>•</li></ul>
<b>Active closed grille</b>	<ul style="list-style-type: none"><li>•</li></ul>
<b>Electric door closing</b>	<ul style="list-style-type: none"><li>• Full car</li></ul>
<b>Hidden electric door handle</b>	<ul style="list-style-type: none"><li>•</li></ul>
<b>Discharge to the outside</b>	<ul style="list-style-type: none"><li>•</li></ul>
<b>Side pedals</b>	<ul style="list-style-type: none"><li>○ Electric (USD 1,471)</li></ul>

## Skylight/Glass

<b>Sunroof Type</b>	<ul style="list-style-type: none"><li>• Sectional unopenable skylight</li></ul>
<b>Front/rear electric windows</b>	Front •/Rear •
<b>One-touch window lifting function</b>	<ul style="list-style-type: none"><li>• Full car</li></ul>
<b>Window anti-pinch function</b>	<ul style="list-style-type: none"><li>•</li></ul>
<b>Car makeup mirror</b>	<ul style="list-style-type: none"><li>• Main driver's lamp;</li><li>• co-pilot's lamp</li></ul>
<b>Rear wiper</b>	<ul style="list-style-type: none"><li>•</li></ul>
<b>Rain sensor wiper function</b>	<ul style="list-style-type: none"><li>• Rainfall-sensing</li></ul>

## Skylight/Glass (continued)

<b>Rear side privacy glass</b>	<ul style="list-style-type: none"><li>•</li></ul>
<b>Side window multi-layer soundproof glass</b>	<ul style="list-style-type: none"><li>• Full car</li></ul>

## Interior and exterior color

<b>Exterior Color</b>	Green special edition pearl paint:#6C877C; Silver metallic paint:#C7C7C7; Grey metallic paint:#A4A8AE; Blue special edition cold light paint:#A3B9D2; Black metallic paint:#1E1E1E; White pearl paint:#FFFFFF; Dawn red special edition multi-layer paint:#C52219
<b>Interior Color</b>	Black/Orange:#000000/#C0674A; Black/White:#000000/#DAD6CF; Black:#000000

## Steering wheel/interior mirror

<b>Steering Wheel Material</b>	<ul style="list-style-type: none"><li>• Leather</li></ul>
<b>Steering wheel position adjustment</b>	<ul style="list-style-type: none"><li>• Electric up and down front and rear adjustment</li></ul>
<b>Multi-function steering wheel</b>	<ul style="list-style-type: none"><li>•</li></ul>
<b>Heated Steering Wheel</b>	<ul style="list-style-type: none"><li>•</li></ul>
<b>Steering wheel memory</b>	<ul style="list-style-type: none"><li>•</li></ul>
<b>Trip computer display screen</b>	<ul style="list-style-type: none"><li>• Color</li></ul>
<b>Full LCD instrument panel</b>	<ul style="list-style-type: none"><li>•</li></ul>
<b>LCD instrument size</b>	<ul style="list-style-type: none"><li>• 4.82 inches</li></ul>
<b>Interior rearview mirror function</b>	<ul style="list-style-type: none"><li>• Automatic anti-glare</li></ul>
<b>Gear shifting</b>	<ul style="list-style-type: none"><li>• Electronic gear shift</li></ul>
<b>HUD Head Up Digital Display</b>	<ul style="list-style-type: none"><li>•</li></ul>
<b>HUD head up size</b>	<ul style="list-style-type: none"><li>• 13.35 inches</li></ul>

## Intelligent configuration

<b>Connected Car Services</b>	<ul style="list-style-type: none"><li>•</li></ul>
<b>OTA Updates</b>	<ul style="list-style-type: none"><li>•</li></ul>
<b>4G/5G Network</b>	<ul style="list-style-type: none"><li>•5G</li></ul>

## Intelligent configuration (continued)

<b>Mobile APP remote function</b>	<ul style="list-style-type: none"><li>• Door control;</li><li>• Window control;</li><li>• Vehicle startup;</li><li>• Charging management;</li><li>• Air conditioning control;</li><li>• Steering wheel heating;</li><li>• Seat heating;</li><li>• Seat ventilation;</li><li>• Vehicle condition inquiry/diagnosis;</li><li>• Vehicle location/car search;</li><li>• Owner service (find charging piles, gas stations, parking lots, etc.);</li><li>• Appointment maintenance/repair</li></ul>
<b>Wi-Fi hotspots</b>	<ul style="list-style-type: none"><li>•</li></ul>
<b>In-vehicle Biometric Monitoring</b>	<ul style="list-style-type: none"><li>•</li></ul>
<b>Car KTV</b>	<ul style="list-style-type: none"><li>•</li></ul>

## Driving Control

<b>Driving mode switch</b>	<ul style="list-style-type: none"><li>• Sport;</li><li>• Standard/Comfort;</li><li>• Off-road;</li><li>• Snow</li></ul>
<b>Automatic parking</b>	<ul style="list-style-type: none"><li>•</li></ul>
<b>Steep slope descent</b>	<ul style="list-style-type: none"><li>•</li></ul>
<b>Hill start assist</b>	<ul style="list-style-type: none"><li>•</li></ul>
<b>Energy recovery system</b>	<ul style="list-style-type: none"><li>•</li></ul>
<b>Variable suspension function</b>	<ul style="list-style-type: none"><li>• Suspension soft and hard adjustment;</li><li>• Suspension height adjustment</li></ul>
<b>Air Suspension</b>	<ul style="list-style-type: none"><li>•</li></ul>
<b>Magic Carpet Intelligent Suspension</b>	<ul style="list-style-type: none"><li>•</li></ul>

## Driving Hardware

<b>Front/rear parking radar</b>	Front •/Rear •
<b>Driving Assistance Camera System</b>	<ul style="list-style-type: none"><li>• 360-degree panoramic image</li></ul>
<b>Front perception camera</b>	<ul style="list-style-type: none"><li>• Monocular</li></ul>
<b>Number of cameras</b>	<ul style="list-style-type: none"><li>• 10</li></ul>
<b>Number of ultrasonic radars</b>	<ul style="list-style-type: none"><li>• 12</li></ul>
<b>Transparent chassis/540-degree imaging</b>	<ul style="list-style-type: none"><li>•</li></ul>
<b>Millimeter wave radar quantity</b>	<ul style="list-style-type: none"><li>• 1</li></ul>
<b>Assisted driving chip</b>	<ul style="list-style-type: none"><li>• Horizon Journey 5</li></ul>
<b>Total chip computing power</b>	<ul style="list-style-type: none"><li>•128 TOPS</li></ul>

## Driving Hardware (continued)

<b>Front perception camera pixels</b>	• 8 million
<b>Environmental awareness camera pixels</b>	• 2 million
<b>Surround view camera pixels</b>	• 2 million

## In-car charging

<b>Multimedia/charging port</b>	•Type-C
<b>Number of USB/Type-C ports</b>	• 2 in the front row/2 in the back row
<b>Mobile phone wireless charging function</b>	• Front row
<b>220V/230V power supply</b>	•
<b>Luggage compartment 12V power socket</b>	•
<b>USB/Type-C maximum charging power</b>	•60W
<b>Mobile phone wireless charging power</b>	•15W

## Optional Package

<b>Optional Package</b>	21-inch rim tire combination (USD 1,471; including: 21-inch silver gray/black gray two-color wheels, 265/45 R21 tires)
-------------------------	------------------------------------------------------------------------------------------------------------------------

---

"●" = Standard equipment

"\_" = Not available

"○" = Optional equipment.

Note: These are Chinese market vehicles. Warranty coverage is not available outside of China.