

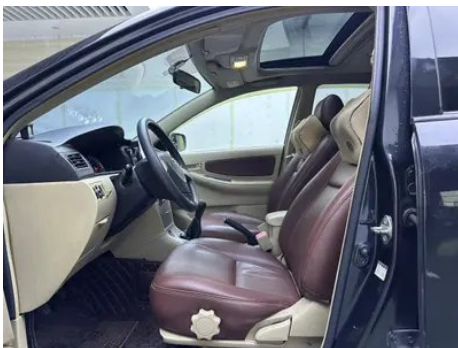
Vehicle Detail Report

Toyota Corolla EX 2013 1.6L Manual Premier Edition

Basic Information

Brand	Toyota
Mileage	137,900 km
Color	Black
First Registration	2014-09-01
Transfer Count	0

Vehicle Images





Vehicle Condition

1. Deformation. 2. Mold stains. 3. Left front door, Paint repair. 4. Left rear door, Body panel repair. 5. Right rear door, Body panel repair. 6. Trunk lid, Body panel repair. 7. Left front fender, Body panel repair. 8. Right rear quarter panel, Body panel repair. 9. Left front door glass, Replaced. 10. Right front door glass, Replaced. 11. Left headlight, Replaced. 12. Right tail light, Replaced.

Configuration Information

Model Information

Model Name	Toyota Corolla EX 2013 1.6L Manual Premier Edition
Launch Date	2012.11

Basic parameters

Vehicle Class	compact car
Energy Type	Gasoline
Maximum Power (kW)	88
Maximum Torque (N·m)	152
Transmission	5th gear manual
Body Type	Sedan
Engine	1.6L 120 horsepower L4

Basic parameters (continued)

Dimensions (L×W×H) (mm)	4555*1705*1490
Official 0-100 km/h Acceleration (s)	-
Top Speed (km/h)	200
Curb Weight (kg)	1150
Maximum Gross Weight (kg)	-
NEDC Combined Fuel Consumption (L/100km)	6.5

engine

Engine Model	1ZR-FE
Displacement (mL)	1598
Displacement (L)	1.6
Induction Type	Natural aspiration
Cylinder Arrangement	L
Number of Cylinders	4
Valves per Cylinder	4
Compression Ratio	10.2
Valve Train	DOHC
Bore (mm)	80.5
Stroke (mm)	78.5
Maximum Power (PS)	120
Max Power Speed (rpm)	6000
Max Torque Speed (rpm)	5200
Maximum net power (kW)	-
Fuel Grade	92.
Fuel Delivery System	Multi-point EFI
Cylinder Head Material	Aluminum alloy
Cylinder Block Material	Aluminum alloy
Engine-specific technologies	Double VVT-i

Screen/System

Bluetooth/In-car Phone	-
In-car CD/DVD Player	• Single disc CD

Body

Body (continued)

Length (mm)	4555
Width (mm)	1705
Height (mm)	1490
Wheelbase (mm)	2600
Front Track (mm)	1470
Rear Track (mm)	1460
Ground Clearance (Fully Loaded) (mm)	170
Door Opening Type	-
Number of Doors	4
Number of Seats	5
Fuel Tank Capacity (L)	50
Trunk volume (L)	430
Drag Coefficient (Cd)	-

Gearbox

Abbreviation	5th gear manual
Number of Gears	5
Transmission Type	Manual Transmission (MT)

Chassis steering

Drive Type	Front-engine, Front-wheel drive (FF)
Front Suspension Type	MacPherson independent suspension
Rear Suspension Type	Trailing arm non-independent suspension
Power Steering Type	Electric power assistance
Vehicle structure	bearing type

Seat Configuration

Seat Material	<ul style="list-style-type: none">• Fabric
Main seat adjustment	<ul style="list-style-type: none">• Front and rear adjustment;• Backrest adjustment;• Height adjustment (2-way)
Co-seat adjustment method	<ul style="list-style-type: none">• Front and rear adjustment;• Backrest adjustment
Electric adjustment of driver's seat and passenger seat	-
Front passenger seat rear adjustable buttons	-

Seat Configuration (continued)

Front/rear center armrest	Front •/Rear-
Rear cup holder	-

Active safety

Anti-lock Braking System (ABS)	•
Electronic Brakeforce Distribution (EBD/CBC)	•
Brake Assist System (EBA/BAS/BA)	-
Traction Control System (ASR/TCS/TRC)	-
Electronic Stability Control (ESC/ESP/DSC)	-
Seat Belt Reminder	•
ISOFIX Child Seat Anchors	•
Lane Departure Warning System (LDWS)	-
Autonomous Emergency Braking (AEB)	-
Driver Fatigue Detection	-

Air conditioning/refrigerator

Air conditioning temperature control method	• Manual air conditioning
Rear Independent Climate Control	-
Rear seat air vents	-
Temperature zone control	-
Car air purifier	-
In-cabin PM2.5 Filter	-

Passive safety

Driver/passenger airbag	Main •/Deputy •
Front/rear side airbags	-
Front/rear head airbags (curtain airbags)	-

Wheel brake

Front Brake Type	Ventilation disc
Rear Brake Type	Disc
Parking brake type	handbrake

Wheel brake (continued)

Front Tire Size	195/60 R15
Rear Tire Size	195/60 R15
Spare Tire Size	Full size

Audio/Interior Lighting

Number of speakers	• 4-5 speakers
---------------------------	----------------

Driving functions

Navigation traffic information display	-
Lane assist	-
Lane Keeping Assist System	-
Satellite navigation system	-
Parking Assist	-

Exterior lighting

Low beam light source	• Halogen
High beam light source	• Halogen
LED daytime running lights	-
Adaptive high and low beam	-
Automatic headlights	-
Front fog lights	•
Height-adjustable headlights	•
Headlight Delay Off	-

Exterior mirrors

Exterior mirror function	• Electric adjustment
---------------------------------	-----------------------

Appearance/anti-theft

Electronic engine immobilizer	•
Central locking system in the car	•
Key Type	• Remote key
Keyless start system	-

Skylight/Glass

Sunroof Type	• Electric sunroof
---------------------	--------------------

Skylight/Glass (continued)

Front/rear electric windows	Front •/Rear •
Window anti-pinch function	•
Car makeup mirror	•
Rear wiper	-

Interior and exterior color

Exterior Color	biotite #000000 Silver #BABABA White #FFFFFF red mica metallic #C4283E Blue #1D313C
Interior Color	Black Beige #3E4146 #C9A782

Steering wheel/interior mirror

Steering wheel position adjustment	• Manual up and down adjustment
Multi-function steering wheel	-
Heated Steering Wheel	-
Steering wheel memory	-
Full LCD instrument panel	-
Interior rearview mirror function	• Manual anti-glare

Intelligent configuration

Connected Car Services	-
OTA Updates	-

Driving Control

Automatic parking	-
--------------------------	---

Driving Hardware

Front/rear parking radar	Front-/Rear ○
---------------------------------	---------------

In-car charging

Multimedia/charging port	•USB;•AUX
---------------------------------	-----------

"●" = Standard equipment

"□" = Not available

"○" = Optional equipment.

Note: These are Chinese market vehicles. Warranty coverage is not available outside of China.