

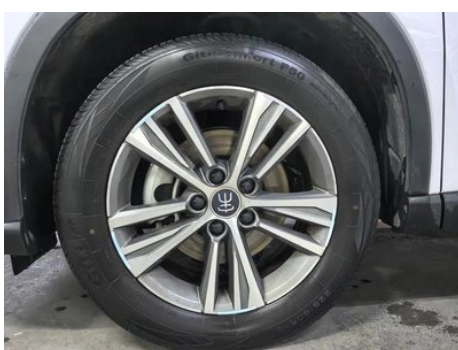
# Vehicle Detail Report

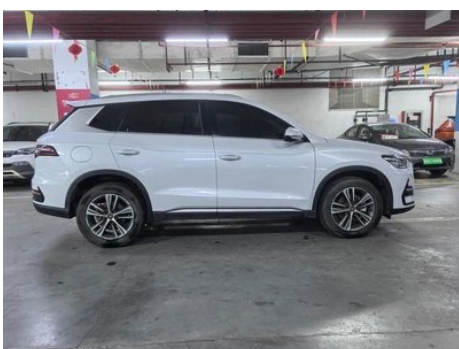
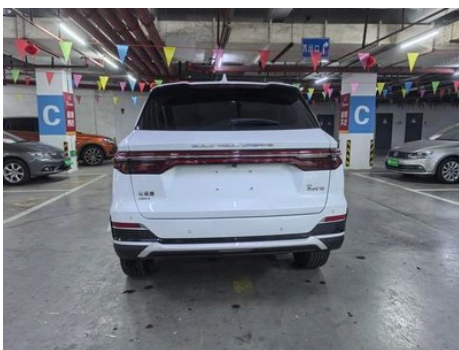
Song Pro DM 2022 DM-i 51km Luxury type

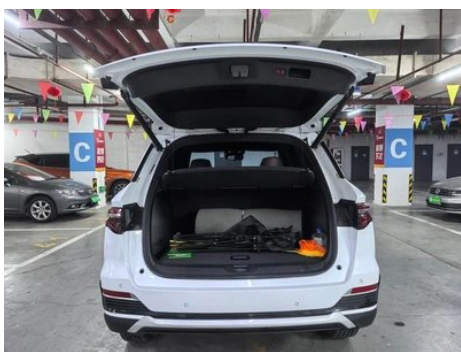
## Basic Information

Brand	BYD
Mileage	22,000 km
Color	White
First Registration	2022-11-01
Transfer Count	0

## Vehicle Images







## Vehicle Condition

1. Original metal panels and factory paint.

## Configuration Information

### Model Information

<b>Model Name</b>	Song Pro New Energy 2022 DM-i 51km Luxury type
<b>Launch Date</b>	2021.12

### Basic parameters

<b>Vehicle Class</b>	Compact SUV
<b>Energy Type</b>	Plug-in Hybrid Electric Vehicle (PHEV)
<b>Maximum Power (kW)</b>	81
<b>Maximum Torque (N·m)</b>	135
<b>Transmission</b>	E-CVT continuously variable transmission
<b>Body Type</b>	SUV
<b>Engine</b>	1.5L 110 horsepower L4
<b>Dimensions (L×W×H) (mm)</b>	4650*1860*1700
<b>Official 0-100 km/h Acceleration (s)</b>	8.5
<b>Top Speed (km/h)</b>	170
<b>Curb Weight (kg)</b>	1680
<b>Maximum Gross Weight (kg)</b>	2055
<b>NEDC Electric Range (km)</b>	51
<b>Electric Motor (PS)</b>	180
<b>NEDC Combined Fuel Consumption (L/100km)</b>	1.5
<b>Electricity Consumption in Fuel Equivalent (L/100km)</b>	1.5

## Basic parameters (continued)

<b>Fuel Consumption with Depleted Battery (L/100km)</b>	5.3
<b>WLTP Combined Fuel Consumption (L/100km)</b>	2.87

## engine

<b>Engine Model</b>	BYD472QA
<b>Displacement (mL)</b>	1498
<b>Displacement (L)</b>	1.5
<b>Induction Type</b>	Natural aspiration
<b>Cylinder Arrangement</b>	L
<b>Number of Cylinders</b>	4
<b>Valves per Cylinder</b>	4
<b>Valve Train</b>	DOHC
<b>Maximum Power (PS)</b>	110
<b>Max Power Speed (rpm)</b>	6000
<b>Max Torque Speed (rpm)</b>	4500
<b>Maximum net power (kW)</b>	78
<b>Fuel Grade</b>	92.
<b>Fuel Delivery System</b>	Multi-point EFI
<b>Cylinder Head Material</b>	Aluminum alloy
<b>Cylinder Block Material</b>	Aluminum alloy
<b>Engine layout</b>	Horizontal

## Electric Motor

<b>Motor Type</b>	Permanent magnet/synchronous
<b>Total Electric Motor Power (kW)</b>	132
<b>Total Electric Motor Torque (N·m)</b>	316
<b>Front Electric Motor Max Power (kW)</b>	132
<b>Front Electric Motor Max Torque (N·m)</b>	316
<b>Number of drive motors</b>	Single motor
<b>Motor Layout</b>	Front-end
<b>Battery Type</b>	Lithium iron phosphate battery
<b>Battery Capacity (kWh)</b>	8.3

## Electric Motor (continued)

<b>Total Electric Motor Power (PS)</b>	180
<b>Battery Cell Brand</b>	Fordy
<b>Power consumption per 100 kilometers (kWh/100km)</b>	13.1
<b>Fast charging function</b>	Not supported

## Screen/System

<b>Central control color screen</b>	<ul style="list-style-type: none"><li>• Touch LCD screen</li></ul>
<b>Infotainment Screen Size</b>	<ul style="list-style-type: none"><li>• 10.1 inches</li></ul>
<b>Bluetooth/In-car Phone</b>	<ul style="list-style-type: none"><li>•</li></ul>
<b>Voice recognition control system</b>	<ul style="list-style-type: none"><li>• Multimedia system;</li><li>• Navigation;</li><li>• Telephone;</li><li>• Air conditioning</li></ul>
<b>In-vehicle intelligent system</b>	<ul style="list-style-type: none"><li>•DiLink</li></ul>
<b>Rotating large screen</b>	<ul style="list-style-type: none"><li>•</li></ul>

## Body

<b>Length (mm)</b>	4650
<b>Width (mm)</b>	1860
<b>Height (mm)</b>	1700
<b>Wheelbase (mm)</b>	2712
<b>Front Track (mm)</b>	1565
<b>Rear Track (mm)</b>	1565
<b>Door Opening Type</b>	swing door
<b>Number of Doors</b>	5
<b>Number of Seats</b>	5
<b>Fuel Tank Capacity (L)</b>	52
<b>Trunk volume (L)</b>	-
<b>Drag Coefficient (Cd)</b>	-
<b>Approach Angle (°)</b>	19
<b>Departure Angle (°)</b>	22
<b>Minimum Turning Radius (m)</b>	5.8

## Gearbox

<b>Abbreviation</b>	E-CVT continuously variable transmission
---------------------	------------------------------------------

## Gearbox (continued)

<b>Number of Gears</b>	stepless speed change
<b>Transmission Type</b>	Electronic Continuously Variable Transmission (E-CVT)

## Chassis steering

<b>Drive Type</b>	Front-engine, Front-wheel drive (FF)
<b>Front Suspension Type</b>	MacPherson independent suspension
<b>Rear Suspension Type</b>	Multi-link independent suspension
<b>Power Steering Type</b>	Electric power assistance
<b>Vehicle structure</b>	bearing type

## Seat Configuration

<b>Seat Material</b>	<ul style="list-style-type: none"><li>• Imitation leather</li></ul>
<b>Main seat adjustment</b>	<ul style="list-style-type: none"><li>• Front and rear adjustment;</li><li>• Backrest adjustment;</li><li>• Height adjustment (2-way)</li></ul>
<b>Co-seat adjustment method</b>	<ul style="list-style-type: none"><li>• Front and rear adjustment;</li><li>• Backrest adjustment</li></ul>
<b>Electric adjustment of driver's seat and passenger seat</b>	-
<b>Front passenger seat rear adjustable buttons</b>	-
<b>Second row seat adjustment</b>	<ul style="list-style-type: none"><li>• Backrest adjustment</li></ul>
<b>Rear seat folding</b>	<ul style="list-style-type: none"><li>• Proportional down</li></ul>
<b>Front/rear center armrest</b>	Front •/Rear •
<b>Rear cup holder</b>	<ul style="list-style-type: none"><li>•</li></ul>

## Active safety

<b>Anti-lock Braking System (ABS)</b>	<ul style="list-style-type: none"><li>•</li></ul>
<b>Electronic Brakeforce Distribution (EBD/CBC)</b>	<ul style="list-style-type: none"><li>•</li></ul>
<b>Brake Assist System (EBA/BAS/BA)</b>	<ul style="list-style-type: none"><li>•</li></ul>
<b>Traction Control System (ASR/TCS/TRC)</b>	<ul style="list-style-type: none"><li>•</li></ul>
<b>Electronic Stability Control (ESC/ESP/DSC)</b>	<ul style="list-style-type: none"><li>•</li></ul>
<b>Tire Pressure Monitoring System (TPMS)</b>	<ul style="list-style-type: none"><li>• Tire pressure display</li></ul>

## Active safety (continued)

<b>Seat Belt Reminder</b>	• Front row
<b>ISOFIX Child Seat Anchors</b>	•
<b>Lane Departure Warning System (LDWS)</b>	-
<b>Autonomous Emergency Braking (AEB)</b>	-
<b>Driver Fatigue Detection</b>	-

## Air conditioning/refrigerator

<b>Air conditioning temperature control method</b>	• Automatic air conditioning
<b>Rear Independent Climate Control</b>	-
<b>Rear seat air vents</b>	•
<b>Temperature zone control</b>	•
<b>Car air purifier</b>	-
<b>In-cabin PM2.5 Filter</b>	•

## Passive safety

<b>Driver/passenger airbag</b>	Main •/Deputy •
<b>Front/rear side airbags</b>	Front •/Rear-
<b>Front/rear head airbags (curtain airbags)</b>	-

## Wheel brake

<b>Front Brake Type</b>	Ventilation disc
<b>Rear Brake Type</b>	Disc
<b>Parking brake type</b>	Electronic Parking
<b>Front Tire Size</b>	225/60 R18
<b>Rear Tire Size</b>	225/60 R18
<b>Spare Tire Size</b>	None

## Audio/Interior Lighting

<b>Number of speakers</b>	• 4 speakers
<b>Touch reading light</b>	•

## Driving functions

<b>Navigation traffic information display</b>	•
<b>Lane assist</b>	-

## Driving functions (continued)

<b>Lane Keeping Assist System</b>	-
<b>Cruise control system</b>	• Cruise control
<b>Satellite navigation system</b>	•
<b>Map Brand</b>	• Gaud
<b>Remote Parking</b>	•
<b>Driver assistance systems</b>	• DiPilot
<b>Parking Assist</b>	-

## Exterior lighting

<b>Low beam light source</b>	• LED
<b>High beam light source</b>	• LED
<b>LED daytime running lights</b>	•
<b>Adaptive high and low beam</b>	-
<b>Automatic headlights</b>	•
<b>Height-adjustable headlights</b>	•
<b>Headlight Delay Off</b>	•

## Exterior mirrors

<b>Exterior mirror function</b>	• Electric adjustment; • Mirror heating
---------------------------------	-----------------------------------------

## Appearance/anti-theft

<b>Rim material</b>	• Aluminum alloy
<b>Electric trunk</b>	-
<b>Electronic engine immobilizer</b>	•
<b>Central locking system in the car</b>	•
<b>Key Type</b>	• Remote key; • Bluetooth key; • NFC/RFID key
<b>Keyless start system</b>	•
<b>Keyless entry function</b>	• Front row
<b>Remote start function</b>	•
<b>Battery preheating</b>	•

## Skylight/Glass

## Skylight/Glass (continued)

<b>Front/rear electric windows</b>	Front •/Rear •
<b>One-touch window lifting function</b>	• Driving position
<b>Window anti-pinch function</b>	•
<b>Car makeup mirror</b>	• Main driver's lamp; • co-pilot's lamp
<b>Rear wiper</b>	•

## Interior and exterior color

<b>Exterior Color</b>	Snowy Region, White:#FFFFFF, Red Emperor Red:#B7242E; Time Grey:#404954; Sky blue:#000555; Xuanyu, Black:#000000
<b>Interior Color</b>	Sky gray/Kirin brown:#787878/#965A5A; Glazed jade blue/eclipse blue:#3F4555/#4F6A8C

## Steering wheel/interior mirror

<b>Steering Wheel Material</b>	• Cortex
<b>Steering wheel position adjustment</b>	• Manual up and down front and rear adjustment
<b>Multi-function steering wheel</b>	•
<b>Heated Steering Wheel</b>	-
<b>Steering wheel memory</b>	-
<b>Trip computer display screen</b>	• Color
<b>Full LCD instrument panel</b>	-
<b>LCD instrument size</b>	• 8.8 inches
<b>Interior rearview mirror function</b>	• Manual anti-glare
<b>Gear shifting</b>	• Electronic gear shift

## Intelligent configuration

<b>Connected Car Services</b>	•
<b>OTA Updates</b>	•
<b>4G/5G Network</b>	•4G

## Intelligent configuration (continued)

<b>Mobile APP remote function</b>	<ul style="list-style-type: none"><li>• Door control;</li><li>• Vehicle start;</li><li>• Lighting control;</li><li>• Climate control;</li><li>• Vehicle status check/diagnostics;</li><li>• Vehicle location/finding;</li><li>• Owner services (locating charging stations, gas stations, parking lots, etc.);</li><li>• Appointment for maintenance/repair</li></ul>
<b>Wi-Fi hotspots</b>	<ul style="list-style-type: none"><li>•</li></ul>

## Driving Control

<b>Driving mode switch</b>	<ul style="list-style-type: none"><li>• Sport;</li><li>• Economy;</li><li>• Standard/Comfort;</li><li>• Snow</li></ul>
<b>Automatic parking</b>	<ul style="list-style-type: none"><li>•</li></ul>
<b>Steep slope descent</b>	<ul style="list-style-type: none"><li>•</li></ul>
<b>Hill start assist</b>	<ul style="list-style-type: none"><li>•</li></ul>
<b>Energy recovery system</b>	<ul style="list-style-type: none"><li>•</li></ul>

## Driving Hardware

<b>Front/rear parking radar</b>	Front-/Rear •
<b>Driving Assistance Camera System</b>	<ul style="list-style-type: none"><li>• Reversing image</li></ul>
<b>Number of cameras</b>	<ul style="list-style-type: none"><li>• 1</li></ul>
<b>Number of ultrasonic radars</b>	<ul style="list-style-type: none"><li>• 4</li></ul>

## In-car charging

<b>Multimedia/charging port</b>	<ul style="list-style-type: none"><li>• USB</li></ul>
<b>Number of USB/Type-C ports</b>	<ul style="list-style-type: none"><li>• 2 in the front row/2 in the back row</li></ul>

"●" = Standard equipment

"\_" = Not available

"○" = Optional equipment.

Note: These are Chinese market vehicles. Warranty coverage is not available outside of China.