

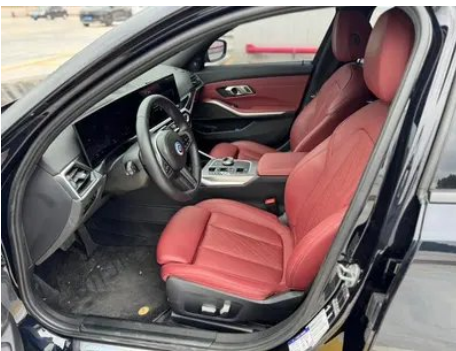
Vehicle Detail Report

BMW 3 Series 2023 330Li M Sports Night Suit

Basic Information

Brand	BMW
Mileage	40,000 km
Color	Purple
First Registration	2023-01-01
Transfer Count	0

Vehicle Images





Vehicle Condition

1. Driver's seat rails and frame, Signs of removal. 2. Front passenger seat rails and frame, Signs of removal. 3. Driver's seat, Signs of removal.

Configuration Information

Model Information

Model Name	BMW 3 Series 2023 330Li M Sports Night Suit
Launch Date	2022.08

Basic parameters

Vehicle Class	Mid-size car
Energy Type	Gasoline
Maximum Power (kW)	180

Basic parameters (continued)

Maximum Torque (N·m)	400
Transmission	8-gear manual integration
Body Type	Sedan
Engine	2.0T 245 horsepower L4
Dimensions (L×W×H) (mm)	4838*1827*1454
Official 0-100 km/h Acceleration (s)	6.3
Top Speed (km/h)	250
Curb Weight (kg)	1618
Maximum Gross Weight (kg)	2070
WLTP Combined Fuel Consumption (L/100km)	7

engine

Engine Model	B48B20G
Displacement (mL)	1998
Displacement (L)	2.0
Induction Type	Turbocharging
Cylinder Arrangement	L
Number of Cylinders	4
Valves per Cylinder	4
Valve Train	DOHC
Maximum Power (PS)	245
Max Power Speed (rpm)	4500-6500
Max Torque Speed (rpm)	1600-4000
Maximum net power (kW)	180
Fuel Grade	95.
Fuel Delivery System	Direct injection
Cylinder Head Material	Aluminum alloy
Cylinder Block Material	Aluminum alloy
Engine layout	Longitudinal

Screen/System

Central control color screen	<ul style="list-style-type: none">• Touch LCD screen
Infotainment Screen Size	<ul style="list-style-type: none">• 14.9 inches

Screen/System (continued)

Bluetooth/In-car Phone	<ul style="list-style-type: none">•
Smartphone Integration/Mirroring	<ul style="list-style-type: none">• Apple CarPlay support
Voice recognition control system	<ul style="list-style-type: none">• Multimedia system;• Navigation;• Telephone;• Air conditioning;• Windows
In-vehicle intelligent system	<ul style="list-style-type: none">•iDrive

Body

Length (mm)	4838
Width (mm)	1827
Height (mm)	1454
Wheelbase (mm)	2961
Front Track (mm)	1583
Rear Track (mm)	1569
Door Opening Type	swing door
Number of Doors	4
Number of Seats	5
Fuel Tank Capacity (L)	59
Trunk volume (L)	-
Drag Coefficient (Cd)	-
Approach Angle (°)	15
Departure Angle (°)	18

Gearbox

Abbreviation	8-gear manual integration
Number of Gears	8
Transmission Type	Automatic Transmission with Manual Mode (AT)

Chassis steering

Drive Type	Front-engine, Rear-wheel drive (FR)
Front Suspension Type	Dual-ball-joint MacPherson independent suspension
Rear Suspension Type	Multi-link independent suspension
Power Steering Type	Electric power assistance
Vehicle structure	bearing type

Seat Configuration

Seat Configuration (continued)

Seat Material	• Imitation leather
Main seat adjustment	• Front and rear adjustment; • Backrest adjustment; • Height adjustment (4-way); • Leg rest adjustment; ○ Lumbar support (4-way)(USD 206)
Co-seat adjustment method	• Front and rear adjustment; • Backrest adjustment; • Height adjustment (4-way); • Leg support adjustment
Electric adjustment of driver's seat and passenger seat	Main •/Deputy •
Front seat functions	○ Heating
Electric seat memory function	• Driving position
Front passenger seat rear adjustable buttons	-
Front/rear center armrest	Front •/Rear •
Rear cup holder	•

Active safety

Anti-lock Braking System (ABS)	•
Electronic Brakeforce Distribution (EBD/CBC)	•
Brake Assist System (EBA/BAS/BA)	•
Traction Control System (ASR/TCS/TRC)	•
Electronic Stability Control (ESC/ESP/DSC)	•
Tire Pressure Monitoring System (TPMS)	• Tire pressure display
Seat Belt Reminder	• Front row
ISOFIX Child Seat Anchors	•
Lane Departure Warning System (LDWS)	○
Autonomous Emergency Braking (AEB)	•
Driver Fatigue Detection	•
Forward Collision Warning (FCW)	•

Active safety (continued)

Emergency Call System (eCall)	•
Built-in Dashcam	•

Air conditioning/refrigerator

Air conditioning temperature control method	• Automatic air conditioning
Rear Independent Climate Control	•
Rear seat air vents	•
Temperature zone control	•
Car air purifier	-
In-cabin PM2.5 Filter	•

Passive safety

Driver/passenger airbag	Main •/Deputy •
Front/rear side airbags	Front •/Rear-
Front/rear head airbags (curtain airbags)	Front •/Rear •
Run-flat tires	•
Passive pedestrian protection	•

Wheel brake

Front Brake Type	Ventilation disc
Rear Brake Type	Ventilation disc
Parking brake type	Electronic Parking
Front Tire Size	225/45 R18
Rear Tire Size	255/40 R18
Spare Tire Size	None

Audio/Interior Lighting

Speaker Brand Name	• Harman/Kardon Harman Kardon
Number of speakers	• 16 speakers
Interior ambient lighting	•9 colors

Driving functions

Navigation traffic information display	•
Lane assist	○

Driving functions (continued)

Lane Keeping Assist System	○
Cruise control system	• Full speed adaptive cruise
Satellite navigation system	•
Driving assistance level	○L2
Rear Cross Traffic Alert	○
Lane centering	○
Road traffic sign recognition	○
Tracking reverse	•
Parking Assist	•
Lane Change Assist	○

Exterior lighting

Low beam light source	•LED
High beam light source	•LED
LED daytime running lights	•
Adaptive high and low beam	•
Automatic headlights	•
Height-adjustable headlights	•
Headlight Delay Off	•
Turn headlights	•

Exterior mirrors

Exterior mirror function	• Electric adjustment; • Electric folding; • Rearview mirror memory; • Rearview mirror heating; • Automatic downturning when reversing; • Automatic folding when locked; • Automatic anti-glare
---------------------------------	---

Appearance/anti-theft

Rim material	• Aluminum alloy
Electric trunk	•
Electronic engine immobilizer	•
Central locking system in the car	•

Appearance/anti-theft (continued)

Key Type	• Remote key
Keyless start system	•
Keyless entry function	• Full vehicle
Appearance Kit	• Sports style
Hands-free Trunk	•
Remote start function	○
Active closed grille	•

Skylight/Glass

Sunroof Type	• Openable panoramic sunroof
Front/rear electric windows	Front •/Rear •
One-touch window lifting function	• Full vehicle
Window anti-pinch function	•
Car makeup mirror	• Main driver's lamp; • co-pilot's lamp
Rear wiper	-
Rain sensor wiper function	• Rainfall-sensing

Interior and exterior color

Exterior Color	Skyscraper Gray #808686 Porti Mango Blue #1459A0 Coastal Blue #0085A4 Ore White #E7E7E7 Melbourne Red #610303 Carbon black #232A30
Interior Color	Black #000000 Black Volcano Red #000000 #8A3D47 Black Mocha color #000000 #423534 Volcano Red Black #8A3D47 #000000

Steering wheel/interior mirror

Steering Wheel Material	• Leather
Steering wheel position adjustment	• Manual up and down front and rear adjustment
Multi-function steering wheel	•
Heated Steering Wheel	-
Steering wheel memory	-
Trip computer display screen	• Color

Steering wheel/interior mirror (continued)

Full LCD instrument panel	<ul style="list-style-type: none">•
LCD instrument size	<ul style="list-style-type: none">• 12.3 inches
Interior rearview mirror function	<ul style="list-style-type: none">• Automatic anti-glare
Gear shifting	<ul style="list-style-type: none">• Electronic gear shift
HUD Head Up Digital Display	<ul style="list-style-type: none">•
ETC Device	○(USD 147)
Steering Wheel Shift Paddles	<ul style="list-style-type: none">•

Intelligent configuration

Connected Car Services	<ul style="list-style-type: none">•
OTA Updates	<ul style="list-style-type: none">•
4G/5G Network	<ul style="list-style-type: none">•4G;○5G(USD 441)
Mobile APP remote function	<ul style="list-style-type: none">• Door control;• Vehicle start;• Lighting control;• Climate control;• Vehicle status check/diagnostics;• Vehicle location / find my car
Wi-Fi hotspots	<ul style="list-style-type: none">•

Driving Control

Driving mode switch	<ul style="list-style-type: none">• Sport;• Economy;• Standard/Comfort;• Customization/Personalization
Automatic parking	<ul style="list-style-type: none">•
Hill start assist	<ul style="list-style-type: none">•
Engine start-stop technology	<ul style="list-style-type: none">•

Driving Hardware

Front/rear parking radar	Front •/Rear •
Driving Assistance Camera System	<ul style="list-style-type: none">• 360-degree panoramic image
Front perception camera	<ul style="list-style-type: none">• Monocular Three eyes
Number of cameras	<ul style="list-style-type: none">• 5; ○ 7
Number of ultrasonic radars	<ul style="list-style-type: none">• 12

In-car charging

Multimedia/charging port	<ul style="list-style-type: none">•USB;•Type-C
Number of USB/Type-C ports	<ul style="list-style-type: none">• 2 in the front row/2 in the back row

In-car charging (continued)

Mobile phone wireless charging function	• Front row
--	-------------

Optional Package

Optional Package	Winter suit (5000 yuan Contains Front seat heating function Remote engine start)
-------------------------	--

"●" = Standard equipment

"-" = Not available

"○" = Optional equipment.

Note: These are Chinese market vehicles. Warranty coverage is not available outside of China.