

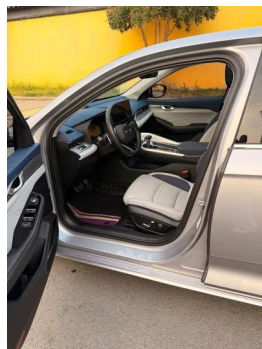
Vehicle Detail Report

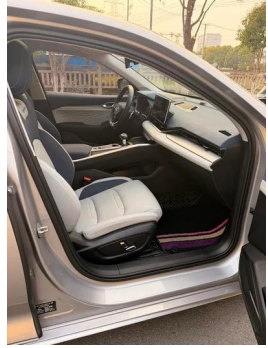
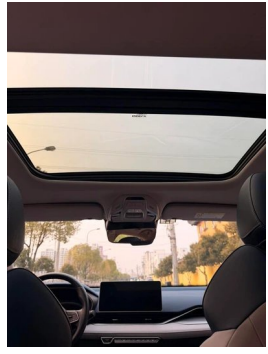
Geely Auto Xingrui 2023 2.0T Premium Trim

Basic Information

| | |
|--------------------|-----------------|
| Brand | Geely |
| Mileage | 46,000 km |
| Color | Champagne color |
| First Registration | 2023-01-01 |
| Transfer Count | 0 |

Vehicle Images







Vehicle Condition

1. Inner side of left C-pillar, Dent. 2. Driver's seat rails and frame, Signs of removal. 3. Front passenger seat rails and frame, Signs of removal. 4. Right rear quarter panel, Deformation.

Configuration Information

Model Information

| | |
|--------------------|------------------------------------|
| Model Name | PREFACE 2023 2.0TD Honorable Model |
| Launch Date | 2022.07 |

Basic parameters

| | |
|---|-------------------------|
| Vehicle Class | compact car |
| Energy Type | Gasoline |
| Maximum Power (kW) | 140 |
| Maximum Torque (N·m) | 300 |
| Transmission | 7-speed wet dual-clutch |
| Body Type | Sedan |
| Engine | 2.0L 190 hp L4 |
| Dimensions (L×W×H) (mm) | 4785*1869*1469 |
| Official 0-100 km/h Acceleration (s) | 7.9 |
| Top Speed (km/h) | 210 |
| Curb Weight (kg) | 1542 |
| Maximum Gross Weight (kg) | 2050 |
| NEDC Combined Fuel Consumption (L/100km) | 6.7 |

engine

| | |
|--------------------------|---------------|
| Engine Model | JLH-4G20TD |
| Displacement (mL) | 1969 |
| Displacement (L) | 2.0 |
| Induction Type | Turbocharging |

engine (continued)

| | |
|--------------------------------|------------------|
| Cylinder Arrangement | L |
| Number of Cylinders | 4 |
| Valves per Cylinder | 4 |
| Valve Train | DOHC |
| Maximum Power (PS) | 190 |
| Max Power Speed (rpm) | 4700 |
| Max Torque Speed (rpm) | 1400-4000 |
| Maximum net power (kW) | 140 |
| Fuel Grade | 95. |
| Fuel Delivery System | Direct injection |
| Cylinder Head Material | Aluminum alloy |
| Cylinder Block Material | Aluminum alloy |
| Engine layout | Horizontal |

Screen/System

| | |
|---|---|
| Central control color screen | <ul style="list-style-type: none">• Touch LCD screen |
| Infotainment Screen Size | <ul style="list-style-type: none">• 12.3 inches |
| Bluetooth/In-car Phone | <ul style="list-style-type: none">• |
| Smartphone Integration/ Mirroring | <ul style="list-style-type: none">• Support HUAWEI HiCar |
| Voice recognition control system | <ul style="list-style-type: none">• Multimedia system;• Navigation;• Telephone;• Air conditioning;• Sunroof |
| In-vehicle intelligent system | <ul style="list-style-type: none">• Geely Galaxy OS |
| Central control screen resolution | <ul style="list-style-type: none">•1920x720 |
| Central control screen pixel density | <ul style="list-style-type: none">•167PPI |
| Multi-finger flying screen control | <ul style="list-style-type: none">• |

Body

| | |
|-------------------------|------|
| Length (mm) | 4785 |
| Width (mm) | 1869 |
| Height (mm) | 1469 |
| Wheelbase (mm) | 2800 |
| Front Track (mm) | 1618 |

Body (continued)

| | |
|-------------------------------|------------|
| Rear Track (mm) | 1618 |
| Door Opening Type | swing door |
| Number of Doors | 4 |
| Number of Seats | 5 |
| Fuel Tank Capacity (L) | 50 |
| Trunk volume (L) | - |
| Drag Coefficient (Cd) | - |
| Approach Angle (°) | 14.8 |
| Departure Angle (°) | 14.3 |

Gearbox

| | |
|--------------------------|------------------------------------|
| Abbreviation | 7-speed wet dual-clutch |
| Number of Gears | 7 |
| Transmission Type | Wet Dual-Clutch Transmission (DCT) |

Chassis steering

| | |
|------------------------------|--------------------------------------|
| Drive Type | Front-engine, Front-wheel drive (FF) |
| Front Suspension Type | MacPherson independent suspension |
| Rear Suspension Type | Multi-link independent suspension |
| Power Steering Type | Electric power assistance |
| Vehicle structure | bearing type |

Seat Configuration

| | |
|--|---|
| Seat Material | <ul style="list-style-type: none">• Imitation leather |
| Main seat adjustment | <ul style="list-style-type: none">• Front and rear adjustment;• Backrest adjustment;• Height adjustment (2-way);• Lumbar support (4-way) |
| Co-seat adjustment method | <ul style="list-style-type: none">• Front and rear adjustment;• Backrest adjustment |
| Electric adjustment of driver's seat and passenger seat | Main •/Deputy • |
| Front seat functions | <ul style="list-style-type: none">• Heating |
| Front passenger seat rear adjustable buttons | - |
| Rear seat folding | <ul style="list-style-type: none">• Proportional down |
| Front/rear center armrest | Front •/Rear • |
| Rear cup holder | <ul style="list-style-type: none">• |

Active safety

Active safety (continued)

| | |
|---|-------------------------|
| Anti-lock Braking System (ABS) | • |
| Electronic Brakeforce Distribution (EBD/CBC) | • |
| Brake Assist System (EBA/BAS/BA) | • |
| Traction Control System (ASR/TCS/TRC) | • |
| Electronic Stability Control (ESC/ESP/DSC) | • |
| Tire Pressure Monitoring System (TPMS) | • Tire pressure display |
| Seat Belt Reminder | • Full car |
| ISOFIX Child Seat Anchors | • |
| Lane Departure Warning System (LDWS) | • |
| Autonomous Emergency Braking (AEB) | • |
| Driver Fatigue Detection | - |
| Forward Collision Warning (FCW) | • |
| Emergency Call System (eCall) | • |
| Built-in Dashcam | ○ |

Air conditioning/refrigerator

| | |
|--|------------------------------|
| Air conditioning temperature control method | • Automatic air conditioning |
| Rear Independent Climate Control | - |
| Rear seat air vents | • |
| Temperature zone control | • |
| Car air purifier | - |
| In-cabin PM2.5 Filter | • |
| Car fragrance device | • |

Passive safety

| | |
|--|-----------------|
| Driver/passenger airbag | Main •/Deputy • |
| Front/rear side airbags | Front •/Rear- |
| Front/rear head airbags (curtain airbags) | Front •/Rear • |

Wheel brake

| | |
|-----------------------------|--------------------|
| Front Brake Type | Ventilation disc |
| Rear Brake Type | Disc |
| Parking brake type | Electronic Parking |
| Front Tire Size | 225/45 R18 |
| Rear Tire Size | 225/45 R18 |
| Spare Tire Size | Not full-size |
| Spare tire placement | In the trunk |

Audio/Interior Lighting

| | |
|----------------------------------|---------------|
| Speaker Brand Name | •BOSE |
| Number of speakers | • 10 speakers |
| Interior ambient lighting | • Multicolor |

Driving functions

| | |
|---|------------------------------|
| Navigation traffic information display | • |
| Lane assist | • |
| Lane Keeping Assist System | • |
| Cruise control system | • Full speed adaptive cruise |
| Satellite navigation system | • |
| Driving assistance level | •L2 |
| Lane centering | • |
| Road traffic sign recognition | • |
| Map Brand | • Gaud |
| Remote Parking | • |
| Parking Assist | • |

Exterior lighting

| | |
|-------------------------------------|------|
| Low beam light source | •LED |
| High beam light source | •LED |
| LED daytime running lights | • |
| Adaptive high and low beam | • |
| Automatic headlights | • |
| Height-adjustable headlights | • |

Exterior lighting (continued)

| | |
|----------------------------|---|
| Headlight Delay Off | <ul style="list-style-type: none">• |
|----------------------------|---|

Exterior mirrors

| | |
|---------------------------------|--|
| Exterior mirror function | <ul style="list-style-type: none">•Electric adjustment;•Electric folding;•Rearview mirror heating;•Automatically turn down when reversing;•Automatically fold when locking the car |
|---------------------------------|--|

Appearance/anti-theft

| | |
|--|---|
| Rim material | <ul style="list-style-type: none">• Aluminum alloy |
| Electric trunk | - |
| Electronic engine immobilizer | <ul style="list-style-type: none">• |
| Central locking system in the car | <ul style="list-style-type: none">• |
| Key Type | <ul style="list-style-type: none">• Remote key;• Bluetooth key |
| Keyless start system | <ul style="list-style-type: none">• |
| Keyless entry function | <ul style="list-style-type: none">• Front row |
| Remote start function | <ul style="list-style-type: none">• |

Skylight/Glass

| | |
|--|---|
| Sunroof Type | <ul style="list-style-type: none">• Openable panoramic sunroof |
| Front/rear electric windows | Front •/Rear • |
| One-touch window lifting function | <ul style="list-style-type: none">• Full car |
| Window anti-pinch function | <ul style="list-style-type: none">• |
| Car makeup mirror | <ul style="list-style-type: none">• Main driver's lamp;• co-pilot's lamp |
| Rear wiper | - |
| Rain sensor wiper function | <ul style="list-style-type: none">• Rainfall-sensing |

Interior and exterior color

| | |
|-----------------------|---|
| Exterior Color | Ice crystal white:#FFFFFF; Basalt gray:#4C5764; Sky gray:#B2CCE4; Aurora silver:#CFD3D3; Moyu black:#000000 |
| Interior Color | Blue/Grey:#3F405C/#D0CCCF |

Steering wheel/interior mirror

| | |
|--------------------------------|--|
| Steering Wheel Material | <ul style="list-style-type: none">• Cortex |
|--------------------------------|--|

Steering wheel/interior mirror (continued)

| | |
|---|--|
| Steering wheel position adjustment | <ul style="list-style-type: none">• Manual up and down front and rear adjustment |
| Multi-function steering wheel | <ul style="list-style-type: none">• |
| Heated Steering Wheel | - |
| Steering wheel memory | - |
| Trip computer display screen | <ul style="list-style-type: none">• Color |
| Full LCD instrument panel | <ul style="list-style-type: none">• |
| LCD instrument size | <ul style="list-style-type: none">• 12.3 inches |
| Interior rearview mirror function | <ul style="list-style-type: none">• Manual anti-glare |
| Gear shifting | <ul style="list-style-type: none">• Electronic gear shift |
| Steering Wheel Shift Paddles | <ul style="list-style-type: none">• |

Intelligent configuration

| | |
|-----------------------------------|---|
| Connected Car Services | <ul style="list-style-type: none">• |
| OTA Updates | <ul style="list-style-type: none">• |
| 4G/5G Network | <ul style="list-style-type: none">•4G |
| Mobile APP remote function | <ul style="list-style-type: none">• |
| Wi-Fi hotspots | <ul style="list-style-type: none">• |

Driving Control

| | |
|----------------------------|--|
| Driving mode switch | <ul style="list-style-type: none">• Sport; • Economy; • Standard/Comfort |
| Automatic parking | <ul style="list-style-type: none">• |
| Hill start assist | <ul style="list-style-type: none">• |

Driving Hardware

| | |
|---|--|
| Front/rear parking radar | Front •/Rear • |
| Driving Assistance Camera System | <ul style="list-style-type: none">• 360-degree panoramic image |
| Number of cameras | <ul style="list-style-type: none">• 5 |
| Number of ultrasonic radars | <ul style="list-style-type: none">• 12 |
| Transparent chassis/540-degree imaging | <ul style="list-style-type: none">• |

In-car charging

| | |
|---------------------------------|--|
| Multimedia/charging port | <ul style="list-style-type: none">•USB |
|---------------------------------|--|

In-car charging (continued)

| Number of USB/Type-C ports | • 2 in the First row/1 in the 2nd-row |
|----------------------------|---------------------------------------|
|----------------------------|---------------------------------------|

"●" = Standard equipment

"_" = Not available

"○" = Optional equipment.

Note: These are Chinese market vehicles. Warranty coverage is not available outside of China.