

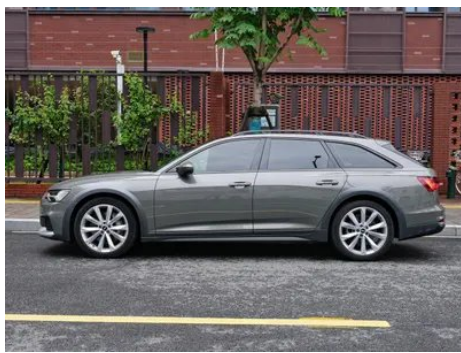
# Vehicle Detail Report

Audi A6 2021 allroad quattro Explore Home 55  
TFSI Exclusive off-road type

## Basic Information

Brand	Audi
Mileage	52,000 km
Color	Silver-gray
First Registration	2021-11-01
Transfer Count	0

## Vehicle Images





## Vehicle Condition

1. Right rocker panel, Scratch damage.

## Configuration Information

### Model Information

<b>Model Name</b>	Audi A6 (Imported) 2021 allroad quattro Explorers 55 TFSI Exclusive Cross-country Model
<b>Launch Date</b>	2020.10

### Basic parameters

<b>Vehicle Class</b>	Mid-size and large cars
<b>Energy Type</b>	Gasoline + 48V Mild Hybrid System
<b>Maximum Power (kW)</b>	250
<b>Maximum Torque (N·m)</b>	500
<b>Transmission</b>	7-speed wet dual-clutch
<b>Body Type</b>	Station Wagon Crossover
<b>Engine</b>	3.0L 340 hp V6
<b>Dimensions (L×W×H) (mm)</b>	4951*1902*1498

## Basic parameters (continued)

<b>Official 0-100 km/h Acceleration (s)</b>	5.3
<b>Top Speed (km/h)</b>	250
<b>Curb Weight (kg)</b>	2040
<b>Maximum Gross Weight (kg)</b>	-
<b>NEDC Combined Fuel Consumption (L/100km)</b>	8.2
<b>Measured 0-100 km/h Acceleration (s)</b>	5.06
<b>Measured 100-0 km/h Braking Distance (m)</b>	38.24
<b>Real-world Fuel Consumption (L/100km)</b>	8.9

## engine

<b>Engine Model</b>	DLZ
<b>Displacement (mL)</b>	2995
<b>Displacement (L)</b>	3.0
<b>Induction Type</b>	Turbocharging
<b>Cylinder Arrangement</b>	V
<b>Number of Cylinders</b>	6
<b>Valves per Cylinder</b>	4
<b>Valve Train</b>	DOHC
<b>Maximum Power (PS)</b>	340
<b>Max Power Speed (rpm)</b>	5000-6400
<b>Max Torque Speed (rpm)</b>	1370-4500
<b>Maximum net power (kW)</b>	250
<b>Fuel Grade</b>	95.
<b>Fuel Delivery System</b>	Direct injection
<b>Cylinder Head Material</b>	Aluminum alloy
<b>Cylinder Block Material</b>	Aluminum alloy
<b>Engine layout</b>	Longitudinal

## Screen/System

<b>Central control color screen</b>	<ul style="list-style-type: none"><li>• Touch LCD screen</li></ul>
<b>Infotainment Screen Size</b>	<ul style="list-style-type: none"><li>• 10.1 inches</li></ul>
<b>Bluetooth/In-car Phone</b>	<ul style="list-style-type: none"><li>•</li></ul>

## Screen/System (continued)

<b>Smartphone Integration/Mirroring</b>	<ul style="list-style-type: none"><li>• Support CarPlay;</li><li>• Support Android Auto</li></ul>
<b>Voice recognition control system</b>	<ul style="list-style-type: none"><li>• Multimedia system;</li><li>• Navigation;</li><li>• Telephone;</li><li>• Air conditioning</li></ul>
<b>Center console screen size</b>	<ul style="list-style-type: none"><li>• 8.6 inches</li></ul>

## Body

<b>Length (mm)</b>	4951
<b>Width (mm)</b>	1902
<b>Height (mm)</b>	1498
<b>Wheelbase (mm)</b>	2925
<b>Front Track (mm)</b>	-
<b>Rear Track (mm)</b>	-
<b>Door Opening Type</b>	swing door
<b>Number of Doors</b>	5
<b>Number of Seats</b>	5
<b>Fuel Tank Capacity (L)</b>	73
<b>Trunk volume (L)</b>	565
<b>Drag Coefficient (Cd)</b>	-
<b>Minimum Turning Radius (m)</b>	6.1

## Gearbox

<b>Abbreviation</b>	7-speed wet dual-clutch
<b>Number of Gears</b>	7
<b>Transmission Type</b>	Wet Dual-Clutch Transmission (DCT)

## Chassis steering

<b>Drive Type</b>	Front-engine, All-wheel drive (F-AWD)
<b>Four-wheel drive</b>	Timely four-wheel drive
<b>Central differential structure</b>	Multi-plate clutch
<b>Front Suspension Type</b>	Five-link independent suspension
<b>Rear Suspension Type</b>	Five-link independent suspension
<b>Power Steering Type</b>	Electric power assistance
<b>Vehicle structure</b>	bearing type

## Seat Configuration

## Seat Configuration (continued)

<b>Seat Material</b>	○ Leather (USD 2,382); • Imitation leather; ○ Mix and match of leather/Alcantara (USD 750)
<b>Main seat adjustment</b>	• Front and rear adjustment; • Backrest adjustment; • Height adjustment (4-way); • Lumbar support (4-way)
<b>Co-seat adjustment method</b>	• Front and rear adjustment; • Backrest adjustment; • Height adjustment (4-way); • Lumbar support (4-way)
<b>Electric adjustment of driver's seat and passenger seat</b>	Main •/Deputy •
<b>Front seat functions</b>	• Heating; ○ Ventilation (USD 1,735); ○ Massage (USD 3,353)
<b>Electric seat memory function</b>	• Driving position; ○ Deputy driving position
<b>Front passenger seat rear adjustable buttons</b>	-
<b>Rear seat folding</b>	• Proportional down
<b>Front/rear center armrest</b>	Front •/Rear •
<b>Rear cup holder</b>	•
<b>Second row seat functions</b>	○ Heating (USD 824)
<b>Sports style seats</b>	○(USD 765)

## Active safety

<b>Anti-lock Braking System (ABS)</b>	•
<b>Electronic Brakeforce Distribution (EBD/CBC)</b>	•
<b>Brake Assist System (EBA/BAS/BA)</b>	•
<b>Traction Control System (ASR/TCS/TRC)</b>	•
<b>Electronic Stability Control (ESC/ESP/DSC)</b>	•
<b>Tire Pressure Monitoring System (TPMS)</b>	• Tire pressure alarm
<b>Seat Belt Reminder</b>	• Front row
<b>ISOFIX Child Seat Anchors</b>	•

## Active safety (continued)

<b>Lane Departure Warning System (LDWS)</b>	○(USD 324)
<b>Autonomous Emergency Braking (AEB)</b>	•
<b>Driver Fatigue Detection</b>	-
<b>Emergency Call System (eCall)</b>	•

## Air conditioning/refrigerator

<b>Air conditioning temperature control method</b>	• Automatic air conditioning
<b>Rear Independent Climate Control</b>	○(USD 1,735)
<b>Rear seat air vents</b>	•
<b>Temperature zone control</b>	•
<b>Car air purifier</b>	○
<b>In-cabin PM2.5 Filter</b>	○
<b>Negative ion generator</b>	○(USD 971)

## Passive safety

<b>Driver/passenger airbag</b>	Main •/Deputy •
<b>Front/rear side airbags</b>	Front/rear rear side airbag (USD 956)
<b>Front/rear head airbags (curtain airbags)</b>	Front •/Rear •

## Wheel brake

<b>Front Brake Type</b>	Ventilation disc
<b>Rear Brake Type</b>	Ventilation disc
<b>Parking brake type</b>	Electronic Parking
<b>Front Tire Size</b>	245/45 R20
<b>Rear Tire Size</b>	245/45 R20
<b>Spare Tire Size</b>	Not full-size

## Audio/Interior Lighting

<b>Speaker Brand Name</b>	○ Bang & Olufsen(USD 1,662)
<b>Number of speakers</b>	○ $\geq 12$ horns; • 10-11 horns
<b>Interior ambient lighting</b>	• 30 colors
<b>Touch reading light</b>	•

## Driving functions

## Driving functions (continued)

<b>Navigation traffic information display</b>	•
<b>Lane assist</b>	○(USD 1,956)
<b>Lane Keeping Assist System</b>	○
<b>Cruise control system</b>	• Constant speed cruise; ○ Full speed adaptive cruise (USD 4,044)
<b>Satellite navigation system</b>	•
<b>Night Vision System</b>	○(USD 4,662)
<b>Rear Cross Traffic Alert</b>	○
<b>Road traffic sign recognition</b>	○(USD 426)
<b>Parking Assist</b>	○(USD 2,265)

## Exterior lighting

<b>Low beam light source</b>	•LED
<b>High beam light source</b>	•LED
<b>LED daytime running lights</b>	•
<b>Adaptive high and low beam</b>	•
<b>Automatic headlights</b>	•
<b>Height-adjustable headlights</b>	•
<b>Headlight Delay Off</b>	•
<b>Lighting features</b>	• Matrix
<b>Headlight rain and fog mode</b>	•
<b>Headlight cleaning device</b>	•

## Exterior mirrors

<b>Exterior mirror function</b>	• Electric adjustment; • Electric folding; • Rearview mirror memory; • Rearview mirror heating; • Automatically turn down when reversing; • Automatically fold when locking the car; ○ Automatic anti-glare (USD 221)
---------------------------------	---

## Appearance/anti-theft

<b>Rim material</b>	• Aluminum alloy
<b>Electric trunk</b>	•

## Appearance/anti-theft (continued)

<b>Electronic engine immobilizer</b>	<ul style="list-style-type: none"><li>•</li></ul>
<b>Central locking system in the car</b>	<ul style="list-style-type: none"><li>•</li></ul>
<b>Key Type</b>	<ul style="list-style-type: none"><li>• Remote key</li></ul>
<b>Keyless start system</b>	<ul style="list-style-type: none"><li>•</li></ul>
<b>Keyless entry function</b>	<ul style="list-style-type: none"><li>• Full car</li></ul>
<b>Hands-free Trunk</b>	<ul style="list-style-type: none"><li>•</li></ul>
<b>Electric trunk position memory</b>	<ul style="list-style-type: none"><li>•</li></ul>
<b>Roof rack</b>	<ul style="list-style-type: none"><li>•</li></ul>
<b>Electric door closing</b>	<input type="radio"/> Full car (USD 1,382)

## Skylight/Glass

<b>Sunroof Type</b>	<ul style="list-style-type: none"><li>• Sectional electric sunroof</li></ul>
<b>Front/rear electric windows</b>	Front <input type="checkbox"/> /Rear <input type="checkbox"/>
<b>One-touch window lifting function</b>	<ul style="list-style-type: none"><li>• Full car</li></ul>
<b>Window anti-pinch function</b>	<ul style="list-style-type: none"><li>•</li></ul>
<b>Car makeup mirror</b>	<ul style="list-style-type: none"><li>• Main driver's lamp; • co-pilot's lamp</li></ul>
<b>Rear wiper</b>	<ul style="list-style-type: none"><li>•</li></ul>
<b>Rain sensor wiper function</b>	<ul style="list-style-type: none"><li>• Rainfall-sensing</li></ul>
<b>Rear side window sunshades</b>	<input type="radio"/> Manual (USD 426)
<b>Rear side privacy glass</b>	<input type="radio"/> (USD 971)
<b>Side window multi-layer soundproof glass</b>	<input type="radio"/> Full car (USD 1,088)
<b>Heated water nozzle</b>	<input type="radio"/>

## Interior and exterior color

<b>Exterior Color</b>	Avalon green:#182022; Ibis white:#F7F6F1; Foil silver:#CAD1D7; Legendary black:#000000; Krami:#999081; Crocodile green:#444E57; Glacier white:#FFFFFF; Sky blue:#2D3142; Nado gray:#8E8E90; Navarra blue:#082086; Tango red:#C23033C; whirlwind Black:#000000
-----------------------	---

## Interior and exterior color (continued)

<b>Interior Color</b>	Black:#000000; Black/ Brown:#000000/#906450; Black/ Green:#2D2B30/#696A76; Black/ Grey:#000000/#999E9D; Black/ Beige:#000000/#C4B9A7
-----------------------	--

## Steering wheel/interior mirror

<b>Steering Wheel Material</b>	• Leather
<b>Steering wheel position adjustment</b>	• Manual up and down front and back adjustment; ○ Electric up and down front and back adjustment (USD 868)
<b>Multi-function steering wheel</b>	•
<b>Heated Steering Wheel</b>	○(USD 412)
<b>Steering wheel memory</b>	○
<b>Trip computer display screen</b>	• Color
<b>Full LCD instrument panel</b>	•
<b>LCD instrument size</b>	• 12.3 inches
<b>Interior rearview mirror function</b>	• Automatic anti-glare
<b>HUD Head Up Digital Display</b>	○(USD 3,029)
<b>Steering Wheel Shift Paddles</b>	•

## Intelligent configuration

<b>Connected Car Services</b>	•
<b>OTA Updates</b>	-

## Driving Control

<b>Driving mode switch</b>	•Sport; •Economy; •Standard/Comfort; •Off-Road
<b>Automatic parking</b>	•
<b>Steep slope descent</b>	•
<b>Hill start assist</b>	•
<b>Variable suspension function</b>	• Suspension soft and hard adjustment; • Suspension height adjustment
<b>Air Suspension</b>	•
<b>Variable steering ratio</b>	•
<b>Engine start-stop technology</b>	•

## Driving Control (continued)

<b>Integral Active Steering</b>	○(USD 4,118)
---------------------------------	--------------

## Driving Hardware

<b>Front/rear parking radar</b>	Front •/Rear •
---------------------------------	----------------

<b>Driving Assistance Camera System</b>	• Reversing image; ○ 360-degree panoramic image (USD 1,294)
---	---

## In-car charging

<b>Multimedia/charging port</b>	•USB;•SD
---------------------------------	----------

<b>Number of USB/Type-C ports</b>	• 2 in the front row
-----------------------------------	----------------------

<b>Mobile phone wireless charging function</b>	○ Front row
--	-------------

<b>Luggage compartment 12V power socket</b>	•
---	---

## Optional Package

## Optional Package (continued)

<b>Optional Package</b>	Allroad interior package (USD 956; Including: welcome lamp, with "allroad" logo, stainless steel foot pedal and footrest, front and rear door sills with aluminum insert anti-friction plate, with lighting, front with "Allroad" logo); External highlight package (USD 1,059; Including: additional anti-stone guard plate, aluminum roof rack, highlight package); 360 panoramic imaging system (USD 1,294; Including: sensor-based side protection front and rear parking assist system, panoramic image system); Audi side assist system (USD 1,956; including: Audi pre-safety system rear version, Audi side assist system); intelligent parking system (USD 2,265; including: parking assist system enhanced version, panoramic image system, automatic parking system); urban driving assistance package (USD 2,926; including: the rear version of Audi's integral pre-safety system includes the front version, Audi side assist system, and intersection assist system); Adaptive cruise control system (USD 4,044; Including: adaptive cruise control system, lane keeping system and traffic congestion Assist system, Audi integral pre-safety system city version, multi-function camera); Four-wheel steering (USD 4,118; Including: dynamic steering, four-wheel steering); Front comfortable seats, with memory function (USD 4,412; Including: front comfortable seat, comfortable front seat headrest)
-------------------------	---

---

"●" = Standard equipment

"\_" = Not available

"○" = Optional equipment.

Note: These are Chinese market vehicles. Warranty coverage is not available outside of China.