

Vehicle Detail Report

Mercedes-Benz CLA 2024 CLA 200 Four-door coupe

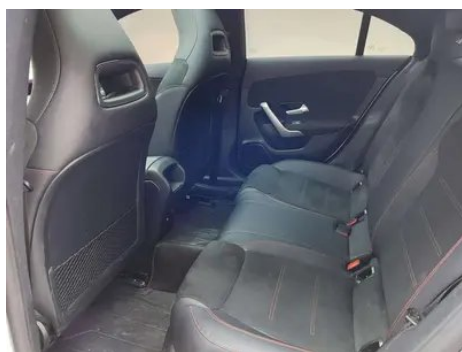
Basic Information

Brand	Mercedes-Benz
Mileage	26,000 km
Color	White
First Registration	2025-01-01
Transfer Count	1

Vehicle Images







Vehicle Condition

1. Inner side of left B-pillar, Scratch. 2. Inner side of left C-pillar, Scratch. 3. Inner side of right C-pillar, Scratch.

Configuration Information

Model Information

Model Name	Mercedes-Benz CLA 2024 CLA 200
Launch Date	2023.10

Basic parameters

Vehicle Class	compact car
Energy Type	Gasoline
Maximum Power (kW)	120
Maximum Torque (N·m)	270
Transmission	7-speed wet dual-clutch
Body Type	Sedan
Engine	1.3T 163 horsepower L4
Dimensions (L×W×H) (mm)	4692*1830*1452
Official 0-100 km/h Acceleration (s)	9
Top Speed (km/h)	223
Curb Weight (kg)	1467
Maximum Gross Weight (kg)	1965
WLTP Combined Fuel Consumption (L/100km)	5.93

engine

Engine Model	282 814
Displacement (mL)	1332
Displacement (L)	1.3
Induction Type	Turbocharging
Cylinder Arrangement	L

engine (continued)

Number of Cylinders	4
Valves per Cylinder	4
Valve Train	DOHC
Maximum Power (PS)	163
Max Power Speed (rpm)	5500
Max Torque Speed (rpm)	2000-3500
Maximum net power (kW)	120
Fuel Grade	95.
Fuel Delivery System	Direct injection
Cylinder Head Material	Aluminum alloy
Cylinder Block Material	Aluminum alloy
Engine layout	Horizontal

Screen/System

Central control color screen	<ul style="list-style-type: none">• Touch LCD screen
Infotainment Screen Size	<ul style="list-style-type: none">• 10.25 inches
Bluetooth/In-car Phone	<ul style="list-style-type: none">•
Smartphone Integration/Mirroring	<ul style="list-style-type: none">• Apple CarPlay support;• Android Auto support
Voice recognition control system	<ul style="list-style-type: none">• Multimedia system;• Navigation;• Telephone;• Air conditioning
Voice wake-up recognition by region	<ul style="list-style-type: none">• Single area
In-vehicle intelligent system	<ul style="list-style-type: none">• MBUX
Voice assistant wake-up word	<ul style="list-style-type: none">• Hello, Mercedes

Body

Length (mm)	4692
Width (mm)	1830
Height (mm)	1452
Wheelbase (mm)	2729
Front Track (mm)	-
Rear Track (mm)	-
Door Opening Type	swing door
Number of Doors	4

Body (continued)

Number of Seats	5
Fuel Tank Capacity (L)	51
Trunk volume (L)	470
Drag Coefficient (Cd)	-
Approach Angle (°)	12.6
Departure Angle (°)	18.9

Gearbox

Abbreviation	7-speed wet dual-clutch
Number of Gears	7
Transmission Type	Wet Dual-Clutch Transmission (DCT)

Chassis steering

Drive Type	Front-engine, Front-wheel drive (FF)
Front Suspension Type	MacPherson independent suspension
Rear Suspension Type	Multi-link independent suspension
Power Steering Type	Electric power assistance
Vehicle structure	bearing type

Seat Configuration

Seat Material	• Leather/suede mix and match
Main seat adjustment	• Front and rear adjustment; • Backrest adjustment; • Height adjustment (4-way); • Leg rest adjustment; • Lumbar support (4-way)
Co-seat adjustment method	• Front and rear adjustment; • Backrest adjustment; • Height adjustment (4-way); • Leg rest adjustment; • Lumbar support (4-way)
Electric adjustment of driver's seat and passenger seat	Main •/Deputy •
Front seat functions	○ Heating (USD 382)
Electric seat memory function	• driving position; • co-pilot position
Front passenger seat rear adjustable buttons	-
Rear seat folding	• Proportional down
Front/rear center armrest	Front •/Rear-

Seat Configuration (continued)

Rear cup holder	-
Sports style seats	•

Active safety

Anti-lock Braking System (ABS)	•
Electronic Brakeforce Distribution (EBD/CBC)	•
Brake Assist System (EBA/BAS/BA)	•
Traction Control System (ASR/TCS/TRC)	•
Electronic Stability Control (ESC/ESP/DSC)	•
Tire Pressure Monitoring System (TPMS)	• Tire pressure display
Seat Belt Reminder	• Full vehicle
ISOFIX Child Seat Anchors	•
Lane Departure Warning System (LDWS)	-
Autonomous Emergency Braking (AEB)	•
Driver Fatigue Detection	•
Forward Collision Warning (FCW)	•
Emergency Call System (eCall)	•

Air conditioning/refrigerator

Air conditioning temperature control method	• Automatic air conditioning
Rear Independent Climate Control	-
Rear seat air vents	-
Temperature zone control	-
Car air purifier	-
In-cabin PM2.5 Filter	-

Passive safety

Driver/passenger airbag	Main •/Deputy •
Front/rear side airbags	Front/rear rear side airbag (USD 500)

Passive safety (continued)

Front/rear head airbags (curtain airbags)	Front •/Rear •
Passive pedestrian protection	•

Wheel brake

Front Brake Type	Ventilation disc
Rear Brake Type	Disc
Parking brake type	Electronic Parking
Front Tire Size	225/45 R18
Rear Tire Size	225/45 R18
Spare Tire Size	None

Audio/Interior Lighting

Speaker Brand Name	<input type="radio"/> Voice of Burmester Berlin (USD 838)
Number of speakers	<input type="radio"/> 14 Speaker • 6-7 Horns

Driving functions

Navigation traffic information display	•
Lane assist	-
Lane Keeping Assist System	-
Cruise control system	• Full speed adaptive cruise
Satellite navigation system	•
Driving assistance level	•L1
Map Brand	• Gaud
Parking Assist	•

Exterior lighting

Low beam light source	•LED
High beam light source	•LED
LED daytime running lights	•
Adaptive high and low beam	•
Automatic headlights	•
Height-adjustable headlights	•
Headlight Delay Off	•

Exterior mirrors

Exterior mirror function	<ul style="list-style-type: none">•Electric adjustment;•Electric folding;•Rearview mirror memory;•Rearview mirror heating;•Automatically turn down when reversing;•Automatically fold when locking the car
---------------------------------	---

Appearance/anti-theft

Rim material	<ul style="list-style-type: none">• Aluminum alloy
Electric trunk	-
Electronic engine immobilizer	<ul style="list-style-type: none">•
Central locking system in the car	<ul style="list-style-type: none">•
Key Type	<ul style="list-style-type: none">• Remote key
Keyless start system	<ul style="list-style-type: none">•
Keyless entry function	<input type="radio"/> Full vehicle (USD 706)
Appearance Kit	<ul style="list-style-type: none">• Sports style
Hands-free Trunk	<input type="radio"/>
Frameless door design	<ul style="list-style-type: none">•

Skylight/Glass

Sunroof Type	<ul style="list-style-type: none">• Openable panoramic sunroof
Front/rear electric windows	Front <ul style="list-style-type: none">• /Rear <ul style="list-style-type: none">•
One-touch window lifting function	<ul style="list-style-type: none">• Full vehicle
Window anti-pinch function	<ul style="list-style-type: none">•
Car makeup mirror	<ul style="list-style-type: none">• Main driving position• COPILOT Driver's seat Lighting lampCo-pilot Lighting lamp
Rear wiper	-
Rain sensor wiper function	<ul style="list-style-type: none">• Rainfall-sensing

Interior and exterior color

Exterior Color	Arctic White #FFFEE9 mountain gray #414047 Lava Red #820311 dimensional white #DEDEDE Gui Li Gold #A8837B sea night blue #1D558D extremely empty blue #2A3E69 Washed blue #2C5673 Iridium Silver #888F92 Cosmic Black #3C3847
-----------------------	---

Interior and exterior color (continued)

Interior Color	Black:#000000
-----------------------	---------------

Steering wheel/interior mirror

Steering Wheel Material	<ul style="list-style-type: none">• Leather
Steering wheel position adjustment	<ul style="list-style-type: none">• Manual up and down front and rear adjustment
Multi-function steering wheel	<ul style="list-style-type: none">•
Heated Steering Wheel	-
Steering wheel memory	-
Trip computer display screen	<ul style="list-style-type: none">• Color
Full LCD instrument panel	<ul style="list-style-type: none">•
LCD instrument size	<ul style="list-style-type: none">• 10.25 inches
Interior rearview mirror function	<ul style="list-style-type: none">• Automatic anti-glare
Gear shifting	<ul style="list-style-type: none">• Electronic gear shift
ETC Device	○(USD 441)
Steering Wheel Shift Paddles	<ul style="list-style-type: none">•

Intelligent configuration

Connected Car Services	<ul style="list-style-type: none">•
OTA Updates	<ul style="list-style-type: none">•
4G/5G Network	<ul style="list-style-type: none">•4G
In-vehicle Biometric Monitoring	<ul style="list-style-type: none">•

Driving Control

Driving mode switch	<ul style="list-style-type: none">• Sport; • Economy; • Standard/ Comfort
Automatic parking	<ul style="list-style-type: none">•
Hill start assist	<ul style="list-style-type: none">•
Variable steering ratio	<ul style="list-style-type: none">•
Engine start-stop technology	<ul style="list-style-type: none">•

Driving Hardware

Front/rear parking radar	Front •/Rear •
Driving Assistance Camera System	<ul style="list-style-type: none">• Reversing image

In-car charging

In-car charging (continued)

Multimedia/charging port	•Type-C
Number of USB/Type-C ports	• 3 in the front row/1 in the back row

"●" = Standard equipment

"_" = Not available

"○" = Optional equipment.

Note: These are Chinese market vehicles. Warranty coverage is not available outside of China.