

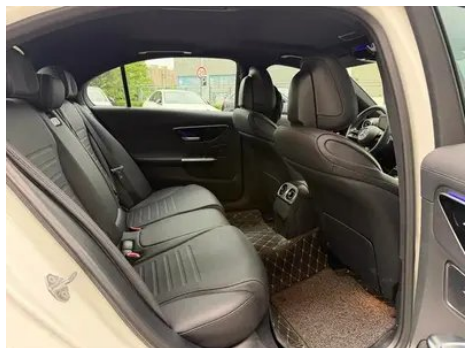
Vehicle Detail Report

Mercedes-Benz C-Class 2024 C 200 L Sports version

Basic Information

Brand	Mercedes-Benz
Mileage	23,300 km
Color	White
First Registration	2023-07-01
Transfer Count	1

Vehicle Images





Configuration Information

Model Information

Model Name	Mercedes-Benz C-Class 2024 C 200 L Sports version
Launch Date	2023.10

Basic parameters

Vehicle Class	Mid-size car
Energy Type	Gasoline + 48V Mild Hybrid System
Maximum Power (kW)	125
Maximum Torque (N·m)	250
Transmission	9-gear manual integration
Body Type	Sedan
Engine	1.5T 170 horsepower L4
Dimensions (L×W×H) (mm)	4882*1820*1461
Official 0-100 km/h Acceleration (s)	9.2
Top Speed (km/h)	225
Curb Weight (kg)	1730
Maximum Gross Weight (kg)	2250
WLTP Combined Fuel Consumption (L/100km)	6.35

engine

Engine Model	254 915
---------------------	---------

engine (continued)

Displacement (mL)	1496
Displacement (L)	1.5
Induction Type	Turbocharging
Cylinder Arrangement	L
Number of Cylinders	4
Valves per Cylinder	4
Valve Train	DOHC
Maximum Power (PS)	170
Max Power Speed (rpm)	5800
Max Torque Speed (rpm)	1800-4000
Maximum net power (kW)	125
Fuel Grade	95.
Fuel Delivery System	Direct injection
Cylinder Head Material	Aluminum alloy
Cylinder Block Material	Aluminum alloy
Engine layout	Longitudinal

Screen/System

Central control color screen	<ul style="list-style-type: none">• Touch LCD screen
Infotainment Screen Size	<ul style="list-style-type: none">• 11.9 inches
Bluetooth/In-car Phone	<ul style="list-style-type: none">•
Smartphone Integration/ Mirroring	<ul style="list-style-type: none">• Support CarPlay;• Support Android Auto
Voice recognition control system	<ul style="list-style-type: none">• Multimedia system;• Navigation;• Telephone;• Air conditioning
Voice wake-up recognition by region	<ul style="list-style-type: none">• Four areas
In-vehicle intelligent system	<ul style="list-style-type: none">• MBUX
App Store	<ul style="list-style-type: none">•
Voice assistant wake-up word	<ul style="list-style-type: none">• Hello, Mercedes
Voice wake-up word-free	<ul style="list-style-type: none">•
Continuous speech recognition	<ul style="list-style-type: none">•

Body

Length (mm)	4882
--------------------	------

Body (continued)

Width (mm)	1820
Height (mm)	1461
Wheelbase (mm)	2954
Front Track (mm)	1589
Rear Track (mm)	1563
Door Opening Type	swing door
Number of Doors	4
Number of Seats	5
Fuel Tank Capacity (L)	66
Trunk volume (L)	475
Drag Coefficient (Cd)	-
Approach Angle (°)	15
Departure Angle (°)	18

Gearbox

Abbreviation	9-gear manual integration
Number of Gears	9
Transmission Type	Automatic Transmission with Manual Mode (AT)

Chassis steering

Drive Type	Front-engine, Rear-wheel drive (FR)
Front Suspension Type	Multi-link independent suspension
Rear Suspension Type	Multi-link independent suspension
Power Steering Type	Electric power assistance
Vehicle structure	bearing type

Seat Configuration

Seat Material	<ul style="list-style-type: none">• Imitation leather
Main seat adjustment	<ul style="list-style-type: none">• Front and rear adjustment;• Backrest adjustment;• Height adjustment (4-way);• Leg rest adjustment;• Lumbar support (4-way)
Co-seat adjustment method	<ul style="list-style-type: none">• Front and rear adjustment;• Backrest adjustment;• Height adjustment (4-way);• Leg rest adjustment;• Lumbar support (4-way)

Seat Configuration (continued)

Electric adjustment of driver's seat and passenger seat	Main •/Deputy •
Front seat functions	○ Heating (USD 441)
Front passenger seat rear adjustable buttons	•
Front/rear center armrest	Front •/Rear •
Rear cup holder	•
Second row seat functions	○ Heating (USD 441)
Sports style seats	•

Active safety

Anti-lock Braking System (ABS)	•
Electronic Brakeforce Distribution (EBD/CBC)	•
Brake Assist System (EBA/BAS/BA)	•
Traction Control System (ASR/TCS/TRC)	•
Electronic Stability Control (ESC/ESP/DSC)	•
Tire Pressure Monitoring System (TPMS)	• Tire pressure display
Seat Belt Reminder	• Full car
ISOFIX Child Seat Anchors	•
Lane Departure Warning System (LDWS)	•
Autonomous Emergency Braking (AEB)	•
Driver Fatigue Detection	•
Forward Collision Warning (FCW)	•
Emergency Call System (eCall)	•

Air conditioning/refrigerator

Air conditioning temperature control method	• Automatic air conditioning
Rear Independent Climate Control	-

Air conditioning/refrigerator (continued)

Rear seat air vents	•
Temperature zone control	•
Car air purifier	•
In-cabin PM2.5 Filter	•

Passive safety

Driver/passenger airbag	Main •/Deputy •
Front/rear side airbags	Front •/Rear ○
Front/rear head airbags (curtain airbags)	Front •/Rear •
Knee airbag	• Main driver knee airbag
Passive pedestrian protection	•

Wheel brake

Front Brake Type	Ventilation disc
Rear Brake Type	Ventilation disc
Parking brake type	Electronic Parking
Front Tire Size	225/45 R18
Rear Tire Size	255/40 R18
Spare Tire Size	None

Audio/Interior Lighting

Speaker Brand Name	○Burmester Berlin Sound (USD 1,174)
Number of speakers	• 5 horns; ○ 15 horns
Interior ambient lighting	• 64 colors

Driving functions

Navigation traffic information display	•
Lane assist	-
Lane Keeping Assist System	•
Cruise control system	• Full speed adaptive cruise
Satellite navigation system	•
Driving assistance level	•L2
Map Brand	• Gaud
Parking Assist	•

Exterior lighting

Exterior lighting (continued)

Low beam light source	•LED
High beam light source	•LED
LED daytime running lights	•
Adaptive high and low beam	•
Automatic headlights	•
Height-adjustable headlights	•
Headlight Delay Off	•

Exterior mirrors

Exterior mirror function	• Electric adjustment; • Electric folding; • Rearview mirror heating; • Automatic folding when locked
---------------------------------	---

Appearance/anti-theft

Rim material	• Aluminum alloy
Electric trunk	-
Electronic engine immobilizer	•
Central locking system in the car	•
Key Type	• Remote key
Keyless start system	•
Appearance Kit	• Sports style
Remote start function	•

Skylight/Glass

Sunroof Type	• Electric sunroof
Front/rear electric windows	Front •/Rear •
One-touch window lifting function	• Full car
Window anti-pinch function	•
Car makeup mirror	• Main driver's lamp; • co-pilot's lamp
Rear wiper	-
Rain sensor wiper function	• Rainfall-sensing

Interior and exterior color

Interior and exterior color (continued)

Exterior Color	Lava red:#B52E39; Arctic white:#F4F4F4; Fritillaria white:#E6E6E6; Sea night blue:#143882; Graphite gray:#4E5158; Time and space silver:#ACACAE; Pine green:#193A48; Obsidian black:#000000
Interior Color	Black:#000000; Black/Flame Red:#000000/#621C27; Black/Macchiato Beige:#000000/#D4D0CF; Black/Titanium Grey:#000000/#2C2D31; Black/Ochre Brown:#000000/#773B34

Steering wheel/interior mirror

Steering Wheel Material	<ul style="list-style-type: none">• Leather
Steering wheel position adjustment	<ul style="list-style-type: none">• Manual up and down front and rear adjustment
Multi-function steering wheel	<ul style="list-style-type: none">•
Heated Steering Wheel	-
Steering wheel memory	-
Trip computer display screen	<ul style="list-style-type: none">• Color
Full LCD instrument panel	<ul style="list-style-type: none">•
LCD instrument size	<ul style="list-style-type: none">• 12.3 inches
Interior rearview mirror function	<ul style="list-style-type: none">• Manual anti-glare
Gear shifting	<ul style="list-style-type: none">• Electronic gear shift
ETC Device	○(USD 441)
Steering Wheel Shift Paddles	<ul style="list-style-type: none">•

Intelligent configuration

Connected Car Services	<ul style="list-style-type: none">•
OTA Updates	<ul style="list-style-type: none">•
4G/5G Network	•4G
Mobile APP remote function	<ul style="list-style-type: none">• Door control;• Vehicle start-up;• Vehicle condition inquiry/diagnosis;• Vehicle location/vehicle search

Driving Control

Driving mode switch	<ul style="list-style-type: none">• Sport;• Economy;• Standard/Comfort
----------------------------	--

Driving Control (continued)

Automatic parking	•
Hill start assist	•
Energy recovery system	•
Variable steering ratio	•
Engine start-stop technology	•

Driving Hardware

Front/rear parking radar	Front •/Rear •
Driving Assistance Camera System	• Reversing image
Front perception camera	• Monocular
Number of cameras	• 2
Number of ultrasonic radars	• 12

In-car charging

Multimedia/charging port	•Type-C
Number of USB/Type-C ports	• 2 in the front row/2 in the back row

Optional Package

Optional Package	Zhile Package (USD 1,174; Including: Burmester 3D Surround Stereo Sound System, Personalized Sound Settings)
-------------------------	--

"●" = Standard equipment

"-" = Not available

"○" = Optional equipment.

Note: These are Chinese market vehicles. Warranty coverage is not available outside of China.