

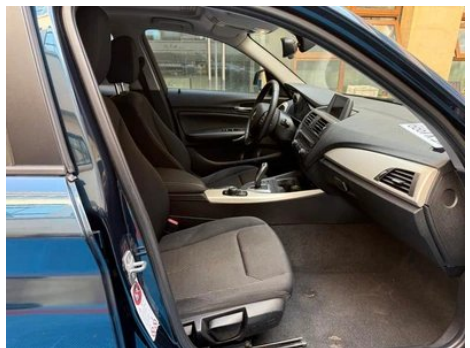
Vehicle Detail Report

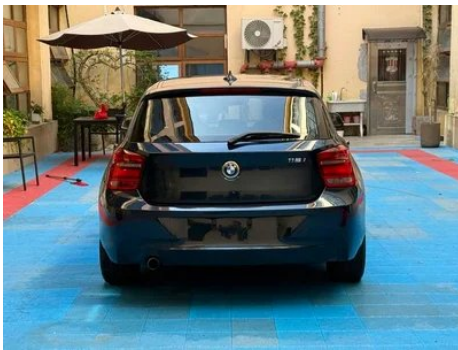
BMW 1 Series (Imported) 2013 Restyling 116i Leading Type

Basic Information

| | |
|--------------------|-------------------|
| Brand | BMW |
| Mileage | 125,000 km |
| Color | Green |
| First Registration | 2014-03-01 |
| Transfer Count | 0 |

Vehicle Images





Vehicle Condition

1. Inside of the left B- pillar, Scratch, Depression (Not caused by an accident).
2. Inside of the right B- pillar, Scratch, Depression (Not caused by an accident).
3. Rear panel, Deformation (Not caused by an accident).
4. Right rear fender, Paint spray repair, Sheet metal repair.

Configuration Information

Model Information

| | |
|--------------------|--|
| Model Name | 1 Series (Imported) 2013 model changed to 116i leading model |
| Launch Date | 2013.05 |

Basic parameters

| | |
|--------------------------------|---------------------------|
| Vehicle Class | compact car |
| Energy Type | Gasoline |
| Maximum Power (kW) | 100 |
| Maximum Torque (N·m) | 220 |
| Transmission | 8-gear manual integration |
| Body Type | Hatchback |
| Engine | 1.6T 136 horsepower L4 |
| Dimensions (L×W×H) (mm) | 4324*1765*1458 |

Basic parameters (continued)

| | |
|---|------|
| Official 0-100 km/h Acceleration (s) | 8.7 |
| Top Speed (km/h) | 210 |
| Curb Weight (kg) | 1475 |
| Maximum Gross Weight (kg) | - |
| NEDC Combined Fuel Consumption (L/100km) | 6.3 |

engine

| | |
|-------------------------------------|--------------------------|
| Engine Model | N13B16A |
| Displacement (mL) | 1598 |
| Displacement (L) | 1.6 |
| Induction Type | Turbocharging |
| Cylinder Arrangement | L |
| Number of Cylinders | 4 |
| Valves per Cylinder | 4 |
| Compression Ratio | 10.5 |
| Valve Train | DOHC |
| Bore (mm) | 77 |
| Stroke (mm) | 85.8 |
| Maximum Power (PS) | 136 |
| Max Power Speed (rpm) | 4400 |
| Max Torque Speed (rpm) | 1350-4300 |
| Maximum net power (kW) | - |
| Fuel Grade | 95. |
| Fuel Delivery System | Direct injection |
| Cylinder Head Material | Aluminum alloy |
| Cylinder Block Material | Aluminum alloy |
| Engine-specific technologies | Double VANOS/Valvetronic |

Screen/System

| | |
|-------------------------------------|------------------|
| Central control color screen | • |
| Bluetooth/In-car Phone | ○ |
| In-car CD/DVD Player | • Single disc CD |

Body

Body (continued)

| | |
|-------------------------------|------|
| Length (mm) | 4324 |
| Width (mm) | 1765 |
| Height (mm) | 1458 |
| Wheelbase (mm) | 2690 |
| Front Track (mm) | 1535 |
| Rear Track (mm) | 1569 |
| Door Opening Type | - |
| Number of Doors | 5 |
| Number of Seats | 5 |
| Fuel Tank Capacity (L) | 52 |
| Trunk volume (L) | - |
| Drag Coefficient (Cd) | - |

Gearbox

| | |
|--------------------------|--|
| Abbreviation | 8-gear manual integration |
| Number of Gears | 8 |
| Transmission Type | Automatic Transmission with Manual Mode (AT) |

Chassis steering

| | |
|------------------------------|---|
| Drive Type | Front-engine, Rear-wheel drive (FR) |
| Front Suspension Type | Dual-ball-joint MacPherson independent suspension |
| Rear Suspension Type | Multi-link independent suspension |
| Power Steering Type | Electric power assistance |
| Vehicle structure | bearing type |

Seat Configuration

| | |
|--|---|
| Seat Material | •Fabric; ○Genuine Leather |
| Main seat adjustment | • Front and rear adjustment; • Backrest adjustment; • Height adjustment (2-way);○ Height adjustment (4-way) |
| Co-seat adjustment method | • Front and rear adjustment; • Backrest adjustment |
| Electric adjustment of driver's seat and passenger seat | Main ○/Secondary ○ |
| Front seat functions | ○ Heating (USD 515) |
| Electric seat memory function | ○ |

Seat Configuration (continued)

| | |
|---|---------------------|
| Front passenger seat rear adjustable buttons | - |
| Rear seat folding | • Proportional down |
| Front/rear center armrest | Front •/Rear- |
| Rear cup holder | - |
| Sports style seats | ○ |

Active safety

| | |
|---|---|
| Anti-lock Braking System (ABS) | • |
| Electronic Brakeforce Distribution (EBD/CBC) | • |
| Brake Assist System (EBA/BAS/BA) | • |
| Traction Control System (ASR/TCS/TRC) | • |
| Electronic Stability Control (ESC/ESP/DSC) | • |
| Tire Pressure Monitoring System (TPMS) | • |
| Seat Belt Reminder | • |
| ISOFIX Child Seat Anchors | • |
| Lane Departure Warning System (LDWS) | ○ |
| Autonomous Emergency Braking (AEB) | - |
| Driver Fatigue Detection | - |

Air conditioning/refrigerator

| | |
|--|---|
| Air conditioning temperature control method | • Manual air conditioning; ○ Automatic air conditioning |
| Rear Independent Climate Control | - |
| Rear seat air vents | ○ |
| Temperature zone control | ○ |
| Car air purifier | - |
| In-cabin PM2.5 Filter | - |

Passive safety

| | |
|--------------------------------|-----------------|
| Driver/passenger airbag | Main •/Deputy • |
| Front/rear side airbags | Front •/Rear- |

Passive safety (continued)

| | |
|--|----------------|
| Front/rear head airbags (curtain airbags) | Front •/Rear • |
| Run-flat tires | • |

Wheel brake

| | |
|---------------------------|------------------|
| Front Brake Type | Ventilation disc |
| Rear Brake Type | Disc |
| Parking brake type | handbrake |
| Front Tire Size | 205/55 R16 |
| Rear Tire Size | 205/55 R16 |
| Spare Tire Size | None |

Audio/Interior Lighting

| | |
|----------------------------------|-------------|
| Number of speakers | • 6-7 Horns |
| Interior ambient lighting | • |

Driving functions

| | |
|---|--------------------------------------|
| Navigation traffic information display | - |
| Lane assist | - |
| Lane Keeping Assist System | - |
| Cruise control system | <input type="radio"/> Cruise control |
| Satellite navigation system | <input type="radio"/> |
| Parking Assist | - |

Exterior lighting

| | |
|-------------------------------------|--|
| Low beam light source | • Halogen; <input type="radio"/> Xenon |
| High beam light source | • Halogen; <input type="radio"/> Xenon |
| LED daytime running lights | <input type="radio"/> |
| Adaptive high and low beam | - |
| Automatic headlights | • |
| Front fog lights | • |
| Height-adjustable headlights | <input type="radio"/> |
| Headlight Delay Off | - |
| Turn headlights | <input type="radio"/> |
| Headlight cleaning device | <input type="radio"/> |

Exterior mirrors

| | |
|---------------------------------|--|
| Exterior mirror function | <ul style="list-style-type: none">• Electric adjustment; ○ Mirror memory; • Mirror heating; ○ Automatic anti-glare |
|---------------------------------|--|

Appearance/anti-theft

| | |
|--|--|
| Rim material | <ul style="list-style-type: none">• Aluminum alloy |
| Electric trunk | - |
| Electronic engine immobilizer | <ul style="list-style-type: none">• |
| Central locking system in the car | <ul style="list-style-type: none">• |
| Key Type | <ul style="list-style-type: none">• Remote key |
| Keyless start system | <ul style="list-style-type: none">• |
| Keyless entry function | ○ |

Skylight/Glass

| | |
|------------------------------------|--|
| Sunroof Type | <ul style="list-style-type: none">• Electric sunroof |
| Front/rear electric windows | Front •/Rear • |
| Window anti-pinch function | <ul style="list-style-type: none">• |
| Car makeup mirror | <ul style="list-style-type: none">• |
| Rear wiper | <ul style="list-style-type: none">• |
| Rain sensor wiper function | <ul style="list-style-type: none">• |

Interior and exterior color

| | |
|-----------------------|---|
| Exterior Color | Snow mountain white:#FAFAFA; Midnight blue:#05526E; Ore white:#E7E7E7; Valencia orange:#FF660E; Gem green:#242224; Glacier silver:#949A9C; Black:#000000; Ore ash:#949A9C; Deep sea blue:#263756; Estolan:#143594 |
| Interior Color | Black:#000000; Black/Inky Grey:#000000/#969696; Black/Pearl White:#000000/#EBDEEB |

Steering wheel/interior mirror

| | |
|---|--|
| Steering Wheel Material | <ul style="list-style-type: none">• Cortex |
| Steering wheel position adjustment | <ul style="list-style-type: none">• Manual up and down front and rear adjustment |
| Multi-function steering wheel | <ul style="list-style-type: none">• |

Steering wheel/interior mirror (continued)

| | |
|-----------------------------------|----------------------------------|
| Heated Steering Wheel | - |
| Steering wheel memory | - |
| Trip computer display screen | • |
| Full LCD instrument panel | - |
| Interior rearview mirror function | ○ Automatic anti-glare (USD 265) |

Intelligent configuration

| | |
|------------------------|---|
| Connected Car Services | - |
| OTA Updates | - |

Driving Control

| | |
|------------------------------|---|
| Automatic parking | - |
| Engine start-stop technology | • |

Driving Hardware

| | |
|----------------------------------|-------------------|
| Front/rear parking radar | Front-/Rear • |
| Driving Assistance Camera System | ○ Reversing image |

In-car charging

| | |
|--------------------------|------|
| Multimedia/charging port | •AUX |
|--------------------------|------|

"●" = Standard equipment

"_" = Not available

"○" = Optional equipment.

Note: These are Chinese market vehicles. Warranty coverage is not available outside of China.