

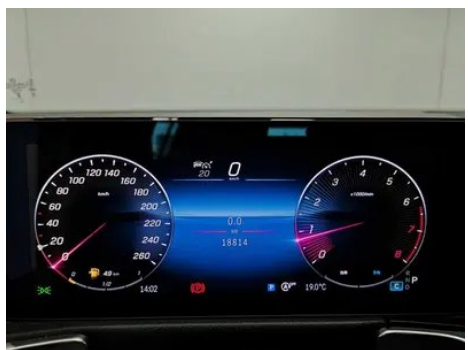
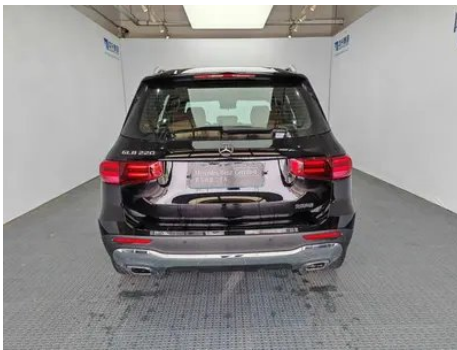
Vehicle Detail Report

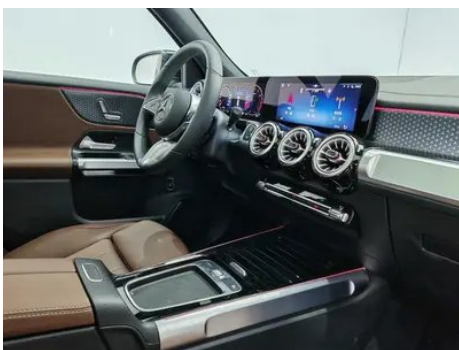
Mercedes-Benz GLB 2024 Restyling GLB 220 Dynamic

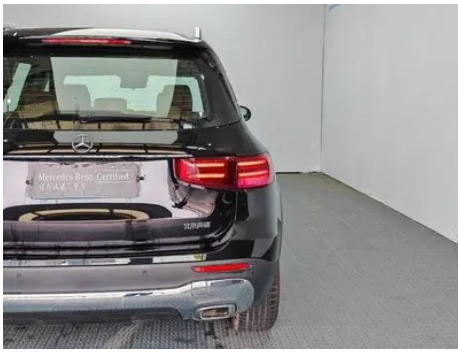
Basic Information

Brand	Mercedes-Benz
Mileage	18,600 km
Color	Black
First Registration	2025-01-01
Transfer Count	0

Vehicle Images







Vehicle Condition

1. Original metal body panels with factory paint.

Configuration Information

Model Information

Model Name	Mercedes-Benz GLB 2024 Restyling GLB 220 Dynamic
Launch Date	2024.05

Basic parameters

Vehicle Class	Compact SUV
Energy Type	Gasoline + 48V Mild Hybrid System
Maximum Power (kW)	140
Maximum Torque (N·m)	300
Transmission	8-speed wet dual-clutch
Body Type	SUV
Engine	2.0L 190 hp L4
Dimensions (L×W×H) (mm)	4638*1834*1696
Official 0-100 km/h Acceleration (s)	8.8
Top Speed (km/h)	210
Curb Weight (kg)	1646
Maximum Gross Weight (kg)	2145
WLTP Combined Fuel Consumption (L/100km)	6.94

engine

Engine Model	260 920
Displacement (mL)	1991
Displacement (L)	2.0
Induction Type	Turbocharging
Cylinder Arrangement	L

engine (continued)

Number of Cylinders	4
Valves per Cylinder	4
Valve Train	DOHC
Maximum Power (PS)	190
Max Power Speed (rpm)	6100
Max Torque Speed (rpm)	1800-4000
Maximum net power (kW)	140
Fuel Grade	95.
Fuel Delivery System	Direct injection
Cylinder Head Material	Aluminum alloy
Cylinder Block Material	Aluminum alloy
Engine layout	Horizontal

Screen/System

Central control color screen	<ul style="list-style-type: none">• Touch LCD screen
Infotainment Screen Size	<ul style="list-style-type: none">• 10.25 inches
Bluetooth/In-car Phone	<ul style="list-style-type: none">•
Smartphone Integration/Mirroring	<ul style="list-style-type: none">• Apple CarPlay support;• Android Auto support
Voice recognition control system	<ul style="list-style-type: none">• Multimedia system;• Navigation;• Telephone;• Air conditioning
In-vehicle intelligent system	<ul style="list-style-type: none">•MBUX
Voice assistant wake-up word	<ul style="list-style-type: none">• Hello, Mercedes
Continuous speech recognition	<ul style="list-style-type: none">•

Body

Length (mm)	4638
Width (mm)	1834
Height (mm)	1696
Wheelbase (mm)	2829
Front Track (mm)	1590
Rear Track (mm)	1592
Door Opening Type	swing door
Number of Doors	5

Body (continued)

Number of Seats	5
Fuel Tank Capacity (L)	52
Trunk volume (L)	703-1430
Drag Coefficient (Cd)	-
Approach Angle (°)	19
Departure Angle (°)	24

Gearbox

Abbreviation	8-speed wet dual-clutch
Number of Gears	8
Transmission Type	Wet Dual-Clutch Transmission (DCT)

Chassis steering

Drive Type	Front-engine, Front-wheel drive (FF)
Front Suspension Type	MacPherson independent suspension
Rear Suspension Type	Multi-link independent suspension
Power Steering Type	Electric power assistance
Vehicle structure	bearing type

Seat Configuration

Seat Material	<ul style="list-style-type: none">• Imitation leather
Main seat adjustment	<ul style="list-style-type: none">• Front and rear adjustment;• Backrest adjustment;• Height adjustment (4-way);• Leg rest adjustment;• Lumbar support (4-way)
Co-seat adjustment method	<ul style="list-style-type: none">• Front and rear adjustment;• Backrest adjustment;• Height adjustment (4-way);○ Leg rest adjustment
Electric adjustment of driver's seat and passenger seat	Electric adjustment of main/auxiliary co-pilot position (USD 426)
Front seat functions	○ Heating (USD 382)
Front passenger seat rear adjustable buttons	-
Second row seat adjustment	<ul style="list-style-type: none">• Backrest adjustment
Rear seat folding	<ul style="list-style-type: none">• Proportional down
Front/rear center armrest	Front •/Rear •
Rear cup holder	<ul style="list-style-type: none">•

Active safety

Anti-lock Braking System (ABS)	•
Electronic Brakeforce Distribution (EBD/CBC)	•
Brake Assist System (EBA/BAS/BA)	•
Traction Control System (ASR/TCS/TRC)	•
Electronic Stability Control (ESC/ESP/DSC)	•
Tire Pressure Monitoring System (TPMS)	• Tire pressure display
Seat Belt Reminder	• Front row; • Second row
ISOFIX Child Seat Anchors	•
Lane Departure Warning System (LDWS)	-
Autonomous Emergency Braking (AEB)	•
Driver Fatigue Detection	•
Forward Collision Warning (FCW)	•
Emergency Call System (eCall)	•

Air conditioning/refrigerator

Air conditioning temperature control method	• Automatic air conditioning
Rear Independent Climate Control	-
Rear seat air vents	•
Temperature zone control	-
Car air purifier	-
In-cabin PM2.5 Filter	-

Passive safety

Driver/passenger airbag	Main •/Deputy •
Front/rear side airbags	Front •/Rear-
Front/rear head airbags (curtain airbags)	Front •/Rear •

Wheel brake

Front Brake Type	Ventilation disc
-------------------------	------------------

Wheel brake (continued)

Rear Brake Type	Disc
Parking brake type	Electronic Parking
Front Tire Size	235/55 R18
Rear Tire Size	235/55 R18
Spare Tire Size	None

Audio/Interior Lighting

Speaker Brand Name	○ Voice of Burmester Berlin (USD 1,206)
Number of speakers	• 7 horn; ○ 12 horn
Interior ambient lighting	• 64 colors

Driving functions

Navigation traffic information display	•
Lane assist	-
Lane Keeping Assist System	-
Cruise control system	• Full speed adaptive cruise
Satellite navigation system	•
Driving assistance level	•L1
Map Brand	• Gaud
Parking Assist	•

Exterior lighting

Low beam light source	•LED
High beam light source	•LED
LED daytime running lights	•
Adaptive high and low beam	•
Automatic headlights	•
Height-adjustable headlights	•
Headlight Delay Off	•

Exterior mirrors

Exterior mirror function	•Electric adjustment; •Electric folding; •Rearview mirror heating; •Automatically turn down when reversing; •Automatically fold when locking the car
---------------------------------	------------------------------------------------------------------------------------------------------------------------------------------------------

Appearance/anti-theft

Rim material	• Aluminum alloy
Electric trunk	•
Electronic engine immobilizer	•
Central locking system in the car	•
Key Type	• Remote key
Keyless start system	•
Keyless entry function	○ Full vehicle (USD 485)
Electric trunk position memory	•
Roof rack	•

Skylight/Glass

Sunroof Type	• Sectional electric sunroof
Front/rear electric windows	Front •/Rear •
One-touch window lifting function	• Full vehicle
Window anti-pinch function	•
Car makeup mirror	• Main driver's lamp; • co-pilot's lamp
Rear wiper	•
Rain sensor wiper function	• Rainfall-sensing

Interior and exterior color

Exterior Color	Lava Red #B52E39 Arctic White #F4F4F4 mountain gray #2F302A obsidian black #000000 Spacetime Silver #ACACAE sea night blue #143882 Matte Mountain Grey #424242
Interior Color	Black Brown #000000 #543E41 Black #000000

Steering wheel/interior mirror

Steering Wheel Material	• Leather
Steering wheel position adjustment	• Manual up and down front and rear adjustment
Multi-function steering wheel	•
Heated Steering Wheel	-

Steering wheel/interior mirror (continued)

Steering wheel memory	-
Trip computer display screen	• Color
Full LCD instrument panel	•
LCD instrument size	• 10.25 inches
Interior rearview mirror function	• Manual anti-glare
Gear shifting	• Electronic gear shift
ETC Device	○(USD 441)
Steering Wheel Shift Paddles	•

Intelligent configuration

Connected Car Services	•
OTA Updates	•
4G/5G Network	•4G
Mobile APP remote function	• Vehicle status check/diagnostics; • Vehicle location / find my car; • Service/repair appointment

Driving Control

Driving mode switch	• Sport; • Economy; • Standard/ Comfort
Automatic parking	•
Hill start assist	•
Engine start-stop technology	•

Driving Hardware

Front/rear parking radar	Front •/Rear •
Driving Assistance Camera System	• Reversing image
Front perception camera	• Monocular
Number of cameras	• 2
Number of ultrasonic radars	• 12

In-car charging

Multimedia/charging port	•USB;•Type-C
Number of USB/Type-C ports	• 3 in the front row/2 in the back row

"●" = Standard equipment

"□" = Not available

"○" = Optional equipment.

Note: These are Chinese market vehicles. Warranty coverage is not available outside of China.