

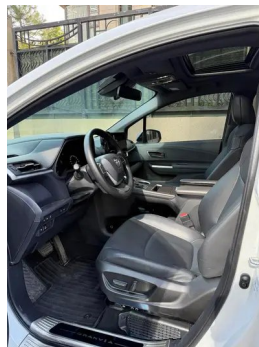
Vehicle Detail Report

Toyota Granvia 2024 Intelligent electric hybrid double engine 2.5L Two-wheel drive luxury edition

Basic Information

Brand	Toyota
Mileage	33,000 km
Color	White
First Registration	2024-11-01
Transfer Count	1

Vehicle Images





Vehicle Condition

1. Original metal body panels with factory paint.

Configuration Information

Model Information

Model Name	Toyota Granvia 2024 2.5L Hybrid Luxury Edition
Launch Date	2024.04

Basic parameters

Vehicle Class	Mid- to large-size MPV
Energy Type	Hybrid Electric Vehicle (HEV)
Maximum Power (kW)	139
Maximum Torque (N·m)	236

Basic parameters (continued)

Transmission	E-CVT continuously variable transmission
Body Type	MPV
Engine	2.5L 189 horsepower L4
Dimensions (L×W×H) (mm)	5175*1995*1785
Official 0-100 km/h Acceleration (s)	-
Top Speed (km/h)	180
Curb Weight (kg)	2090
Maximum Gross Weight (kg)	2800
Electric Motor (PS)	182
WLTP Combined Fuel Consumption (L/100km)	5.77

engine

Engine Model	A25H
Displacement (mL)	2487
Displacement (L)	2.5
Induction Type	Natural aspiration
Cylinder Arrangement	L
Number of Cylinders	4
Valves per Cylinder	4
Compression Ratio	14
Valve Train	DOHC
Maximum Power (PS)	189
Max Power Speed (rpm)	6000
Max Torque Speed (rpm)	4200-4700
Maximum net power (kW)	139
Fuel Grade	92.
Fuel Delivery System	Mixed injection
Cylinder Head Material	Aluminum alloy
Cylinder Block Material	Aluminum alloy
Engine layout	Horizontal
Engine-specific technologies	VVT-iE

Electric Motor

Motor Type	Permanent magnet/synchronous
Total Electric Motor Power (kW)	134
Total Electric Motor Torque (N·m)	270
Front Electric Motor Max Power (kW)	134
Front Electric Motor Max Torque (N·m)	270
System total power (kW)	181
Number of drive motors	Single motor
Motor Layout	Front-end
Battery Type	Nickel-metal hydride battery
Total Electric Motor Power (PS)	182
Battery Cell Brand	PRIMEARTH
System comprehensive power (Ps)	246
Battery Pack Warranty	First Owner Lifetime Warranty/Non-Operating (Liability Exemption Terms Subject to Official)

Screen/System

Central control color screen	<ul style="list-style-type: none">• Touch LCD screen
Infotainment Screen Size	<ul style="list-style-type: none">• 10.25 inches
Bluetooth/In-car Phone	<ul style="list-style-type: none">•
Smartphone Integration/Mirroring	<ul style="list-style-type: none">• Apple CarPlay support;• Baidu CarLife support;• HUAWEI HiCar support
Central control screen type	<ul style="list-style-type: none">•TFT
Central control screen resolution	<ul style="list-style-type: none">•1920x720

Body

Length (mm)	5175
Width (mm)	1995
Height (mm)	1785
Wheelbase (mm)	3060
Front Track (mm)	1725

Body (continued)

Rear Track (mm)	1726
Door Opening Type	Side sliding door
Number of Doors	5
Number of Seats	7
Fuel Tank Capacity (L)	68
Trunk volume (L)	525-2112
Drag Coefficient (Cd)	-
Approach Angle (°)	14
Departure Angle (°)	17
Minimum Turning Radius (m)	5.7

Gearbox

Abbreviation	E-CVT continuously variable transmission
Number of Gears	stepless speed change
Transmission Type	Electronic Continuously Variable Transmission (E-CVT)

Chassis steering

Drive Type	Front-engine, Front-wheel drive (FF)
Front Suspension Type	MacPherson independent suspension
Rear Suspension Type	Double wishbone independent suspension
Power Steering Type	Electric power assistance
Vehicle structure	bearing type

Seat Configuration

Seat Material	<ul style="list-style-type: none">• Imitation leather
Main seat adjustment	<ul style="list-style-type: none">• Front and rear adjustment;• Backrest adjustment;• Height adjustment (2-way)
Co-seat adjustment method	<ul style="list-style-type: none">• Front and rear adjustment;• Backrest adjustment
Electric adjustment of driver's seat and passenger seat	-
Front passenger seat rear adjustable buttons	-
Second row seat adjustment	<ul style="list-style-type: none">• Front and rear adjustment;• Backrest adjustment

Seat Configuration (continued)

Rear seat folding	• Proportional down
Front/rear center armrest	Front •/Rear •
Rear cup holder	•
Seat Layout	•2-2-3
Second row independent seats	•
Rear small table	•

Active safety

Anti-lock Braking System (ABS)	•
Electronic Brakeforce Distribution (EBD/CBC)	•
Brake Assist System (EBA/BAS/BA)	•
Traction Control System (ASR/TCS/TRC)	•
Electronic Stability Control (ESC/ESP/DSC)	•
Tire Pressure Monitoring System (TPMS)	• Tire pressure display
Seat Belt Reminder	• Full vehicle
ISOFIX Child Seat Anchors	•
Lane Departure Warning System (LDWS)	•
Autonomous Emergency Braking (AEB)	•
Driver Fatigue Detection	-
Forward Collision Warning (FCW)	•
Low Speed Alert	•
Emergency Call System (eCall)	•

Air conditioning/refrigerator

Air conditioning temperature control method	• Automatic air conditioning
Rear Independent Climate Control	•
Rear seat air vents	•
Temperature zone control	•

Air conditioning/refrigerator (continued)

Car air purifier	-
In-cabin PM2.5 Filter	•

Passive safety

Driver/passenger airbag	Main •/Deputy •
Front/rear side airbags	Front •/Rear •
Front/rear head airbags (curtain airbags)	Front •/Rear •
Knee airbag	• Driver's knee airbag

Wheel brake

Front Brake Type	Ventilation disc
Rear Brake Type	Ventilation disc
Parking brake type	Electronic Parking
Front Tire Size	235/60 R18
Rear Tire Size	235/60 R18
Spare Tire Size	Not full-size
Spare tire placement	In the trunk

Audio/Interior Lighting

Number of speakers	• 6 speakers
---------------------------	--------------

Driving functions

Navigation traffic information display	-
Lane assist	-
Lane Keeping Assist System	•
Cruise control system	• Full speed adaptive cruise
Satellite navigation system	-
Driving assistance level	•L2
Lane centering	•
Driver assistance systems	•Toyota Pilot
Parking Assist	-

Exterior lighting

Low beam light source	•LED
High beam light source	•LED
LED daytime running lights	•

Exterior lighting (continued)

Adaptive high and low beam	•
Automatic headlights	•
Front fog lights	•LED
Height-adjustable headlights	•
Headlight Delay Off	-

Exterior mirrors

Exterior mirror function	• Electric adjustment
---------------------------------	-----------------------

Appearance/anti-theft

Rim material	• Aluminum alloy
Electric trunk	-
Electronic engine immobilizer	•
Central locking system in the car	•
Key Type	• Remote key; • Bluetooth key
Keyless start system	•
Keyless entry function	• Full vehicle
Roof rack	•
Remote start function	•
Sliding door type	• Dual electric

Skylight/Glass

Sunroof Type	• Sectional electric sunroof
Front/rear electric windows	Front •/Rear •
One-touch window lifting function	• Full vehicle
Window anti-pinch function	•
Car makeup mirror	• Main driver's lamp; • co-pilot's lamp
Rear wiper	•
Rear side window sunshades	• Manual
Rear side privacy glass	•

Interior and exterior color

Interior and exterior color (continued)

Exterior Color	Platinum White #E5E5E5 Moyuan Black #1D1510 Flowing Light Silver #BFBDC5 ink blue #05152E carbon crystal brown #503C32
Interior Color	Elegant and sophisticated #000000

Steering wheel/interior mirror

Steering Wheel Material	<ul style="list-style-type: none">• Plastic
Steering wheel position adjustment	<ul style="list-style-type: none">• Manual up and down front and rear adjustment
Multi-function steering wheel	<ul style="list-style-type: none">•
Heated Steering Wheel	-
Steering wheel memory	-
Trip computer display screen	<ul style="list-style-type: none">• Color
Full LCD instrument panel	-
LCD instrument size	<ul style="list-style-type: none">• 4.2 inches
Interior rearview mirror function	<ul style="list-style-type: none">• Manual anti-glare
Gear shifting	<ul style="list-style-type: none">• Mechanical gear shift
Dashboard screen material	<ul style="list-style-type: none">•TFT

Intelligent configuration

Connected Car Services	-
OTA Updates	-
Mobile APP remote function	<ul style="list-style-type: none">• Door control;• Vehicle start;• Climate control;• Vehicle status check/diagnostics;• Vehicle location / find my car;• Owner services (charging stations, gas stations, parking, etc.);• Service/repair appointment

Driving Control

Driving mode switch	<ul style="list-style-type: none">• Sport;• Economy;• Standard/Comfort
Automatic parking	<ul style="list-style-type: none">•
Hill start assist	<ul style="list-style-type: none">•
Energy recovery system	<ul style="list-style-type: none">•

Driving Hardware

Front/rear parking radar	Front •/Rear •
---------------------------------	----------------

Driving Hardware (continued)

Driving Assistance Camera System	• Reversing image
Front perception camera	• Monocular
Number of cameras	• 2
Number of ultrasonic radars	• 8 pieces
Millimeter wave radar quantity	• 1

In-car charging

Multimedia/charging port	•USB;•Type-C
Number of USB/Type-C ports	• 3 in the front row/4 in the back row

"●" = Standard equipment

"-" = Not available

"○" = Optional equipment.

Note: These are Chinese market vehicles. Warranty coverage is not available outside of China.