

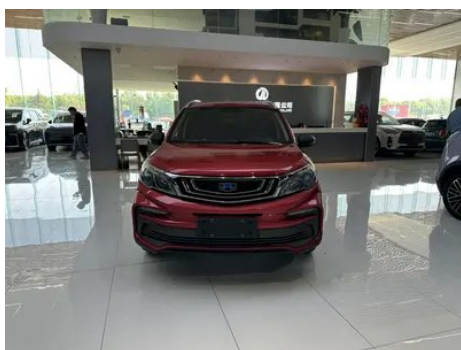
Vehicle Detail Report

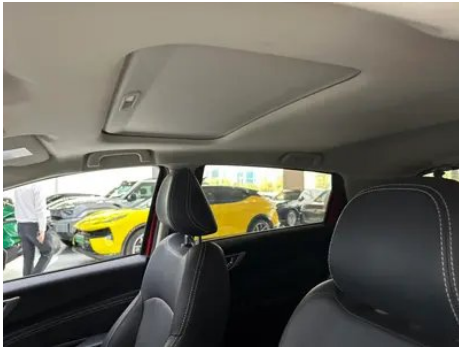
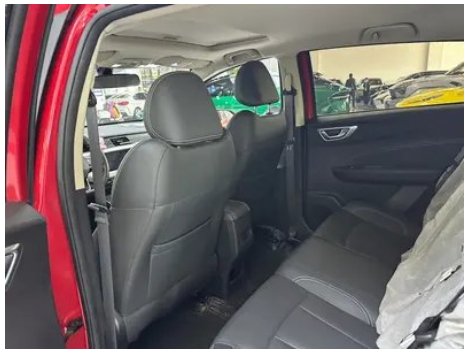
Geely Vision X3 2020 1.5L CVT Premium Trim

Basic Information

Brand	Geely
Mileage	67,000 km
Color	Red
First Registration	2020-11-01
Transfer Count	1

Vehicle Images







Vehicle Condition

1. Original metal body panels with factory paint.

Configuration Information

Model Information

Model Name	Geely Vision X3 2020 1.5L CVT Premium Trim
Launch Date	2020.04

Basic parameters

Vehicle Class	Small SUV
Energy Type	Gasoline
Maximum Power (kW)	80
Maximum Torque (N·m)	142
Transmission	CVT continuously variable transmission
Body Type	SUV
Engine	1.5L 109 horsepower L4
Dimensions (L×W×H) (mm)	4005*1760*1575
Official 0-100 km/h Acceleration (s)	-
Top Speed (km/h)	-
Curb Weight (kg)	1215
Maximum Gross Weight (kg)	-
NEDC Combined Fuel Consumption (L/100km)	6.1

engine

Engine Model	JLy-4G15
Displacement (mL)	1498
Displacement (L)	1.5
Induction Type	Natural aspiration
Cylinder Arrangement	L

engine (continued)

Number of Cylinders	4
Valves per Cylinder	4
Valve Train	DOHC
Maximum Power (PS)	109
Max Power Speed (rpm)	6000
Max Torque Speed (rpm)	4400
Maximum net power (kW)	-
Fuel Grade	92.
Fuel Delivery System	Multi-point EFI
Cylinder Head Material	Aluminum alloy
Cylinder Block Material	Aluminum alloy
Engine layout	Horizontal
Engine-specific technologies	DVVT

Screen/System

Central control color screen	<ul style="list-style-type: none">• Touch LCD screen
Infotainment Screen Size	<ul style="list-style-type: none">• 8 inches
Bluetooth/In-car Phone	<ul style="list-style-type: none">•
Smartphone Integration/Mirroring	<ul style="list-style-type: none">• OEM smartphone integration/mirroring
Voice recognition control system	<ul style="list-style-type: none">• Multimedia system;• Navigation;• Telephone

Body

Length (mm)	4005
Width (mm)	1760
Height (mm)	1575
Wheelbase (mm)	2480
Front Track (mm)	1468
Rear Track (mm)	1492
Door Opening Type	swing door
Number of Doors	5
Number of Seats	5
Trunk volume (L)	400
Drag Coefficient (Cd)	-

Body (continued)

Approach Angle (°)	22
Departure Angle (°)	37
Minimum ground clearance without load (mm)	185

Gearbox

Abbreviation	CVT continuously variable transmission
Number of Gears	stepless speed change
Transmission Type	Continuously Variable Transmission (CVT)

Chassis steering

Drive Type	Front-engine, Front-wheel drive (FF)
Front Suspension Type	MacPherson independent suspension
Rear Suspension Type	Torsion beam non-independent suspension
Power Steering Type	Electric power assistance
Vehicle structure	bearing type

Seat Configuration

Seat Material	<ul style="list-style-type: none">• Imitation leather
Main seat adjustment	<ul style="list-style-type: none">• Front and rear adjustment;• Backrest adjustment;• Height adjustment (2-way)
Co-seat adjustment method	<ul style="list-style-type: none">• Front and rear adjustment;• Backrest adjustment
Electric adjustment of driver's seat and passenger seat	-
Front passenger seat rear adjustable buttons	-
Rear seat folding	<ul style="list-style-type: none">• Proportional down
Front/rear center armrest	Front •/Rear-
Rear cup holder	-

Active safety

Anti-lock Braking System (ABS)	<ul style="list-style-type: none">•
Electronic Brakeforce Distribution (EBD/CBC)	<ul style="list-style-type: none">•

Active safety (continued)

Brake Assist System (EBA/BAS/BA)	•
Traction Control System (ASR/TCS/TRC)	•
Electronic Stability Control (ESC/ESP/DSC)	•
Tire Pressure Monitoring System (TPMS)	• Tire pressure alarm
Seat Belt Reminder	• Front row
ISOFIX Child Seat Anchors	•
Lane Departure Warning System (LDWS)	-
Autonomous Emergency Braking (AEB)	-
Driver Fatigue Detection	-
Built-in Dashcam	•

Air conditioning/refrigerator

Air conditioning temperature control method	• Manual air conditioning
Rear Independent Climate Control	-
Rear seat air vents	-
Temperature zone control	-
Car air purifier	-
In-cabin PM2.5 Filter	-

Passive safety

Driver/passenger airbag	Main •/Deputy •
Front/rear side airbags	-
Front/rear head airbags (curtain airbags)	-

Wheel brake

Front Brake Type	Ventilation disc
Rear Brake Type	Disc
Parking brake type	handbrake
Front Tire Size	205/60 R16
Rear Tire Size	205/60 R16
Spare Tire Size	Not full-size

Audio/Interior Lighting

Number of speakers	• 6 speakers
---------------------------	--------------

Driving functions

Navigation traffic information display	•
Lane assist	-
Lane Keeping Assist System	-
Cruise control system	• Cruise control
Satellite navigation system	•
Parking Assist	-

Exterior lighting

Low beam light source	• Halogen
High beam light source	• Halogen
LED daytime running lights	•
Adaptive high and low beam	-
Automatic headlights	•
Height-adjustable headlights	•
Headlight Delay Off	-

Exterior mirrors

Exterior mirror function	• Electric adjustment; • Mirror heating
---------------------------------	---

Appearance/anti-theft

Rim material	• Aluminum alloy
Electronic engine immobilizer	•
Central locking system in the car	•
Key Type	• Remote key
Keyless start system	•
Keyless entry function	• Driving position
Roof rack	•

Skylight/Glass

Sunroof Type	• Electric sunroof
---------------------	--------------------

Skylight/Glass (continued)

Front/rear electric windows	Front •/Rear •
One-touch window lifting function	• Full vehicle
Window anti-pinch function	•
Rear wiper	•

Interior and exterior color

Exterior Color	Ice Crystal White #FFFFFF Ryukyu Gold #AB9F85 Coral red #BA150D Starry Blue #1D778F
Interior Color	Black:#000000

Steering wheel/interior mirror

Steering Wheel Material	• Leather
Steering wheel position adjustment	• Manual up and down adjustment
Multi-function steering wheel	•
Heated Steering Wheel	-
Steering wheel memory	-
Trip computer display screen	• Monochrome
Full LCD instrument panel	-
Interior rearview mirror function	• Manual anti-glare

Intelligent configuration

Connected Car Services	-
OTA Updates	-

Driving Control

Driving mode switch	• Movement
Automatic parking	-
Steep slope descent	•
Hill start assist	•

Driving Hardware

Front/rear parking radar	Front-/Rear •
Driving Assistance Camera System	• Reversing image

In-car charging

In-car charging (continued)

Multimedia/charging port	•USB
Number of USB/Type-C ports	• 1 front row/1 back row

"●" = Standard equipment

"-" = Not available

"○" = Optional equipment.

Note: These are Chinese market vehicles. Warranty coverage is not available outside of China.