

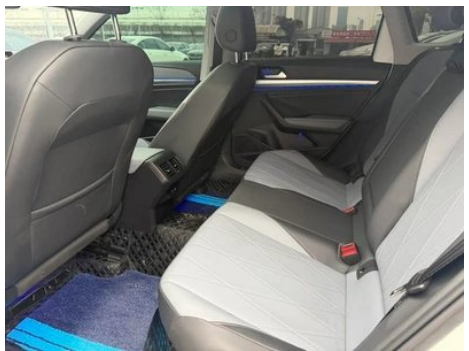
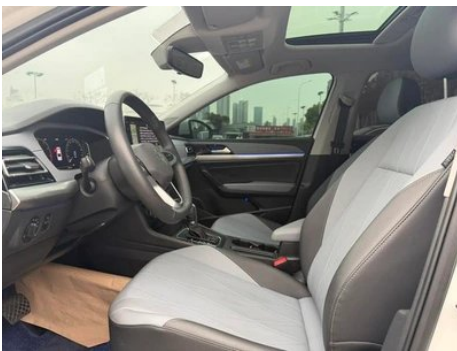
Vehicle Detail Report

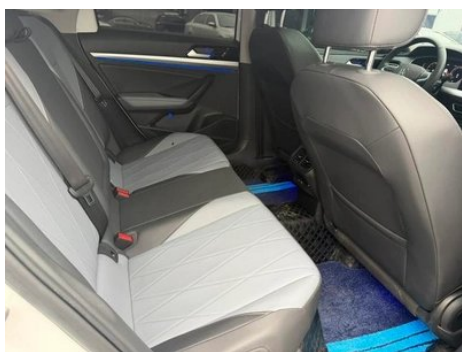
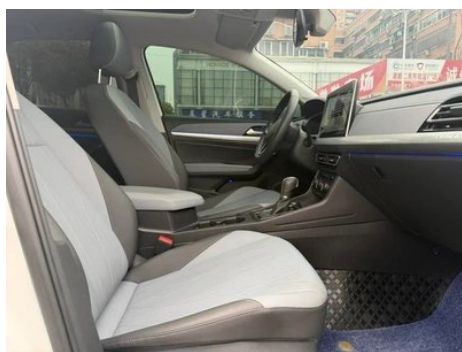
Volkswagen Lavida 2023 Restyling 1.5L Automatic Five Million Edition

Basic Information

Brand	Volkswagen
Mileage	33,000 km
Color	White
First Registration	2024-02-01
Transfer Count	0

Vehicle Images





Vehicle Condition

1. Driver's seat rails and frame, Signs of removal. 2. Front passenger seat rails and frame, Signs of removal.

Configuration Information

Model Information

Model Name	Lavida 2023 Model Facelift 1.5L Automatic Five Million Edition
Launch Date	2023.04

Basic parameters

Vehicle Class	compact car
Energy Type	Gasoline
Maximum Power (kW)	81
Maximum Torque (N·m)	141
Transmission	6-speed manual integration
Body Type	Sedan
Engine	1.5L 110 horsepower L4
Dimensions (L×W×H) (mm)	4678*1806*1474

Basic parameters (continued)

Official 0-100 km/h Acceleration (s)	-
Top Speed (km/h)	188
Curb Weight (kg)	1295
Maximum Gross Weight (kg)	1755
WLTP Combined Fuel Consumption (L/100km)	5.92

engine

Engine Model	EA211-DRZ
Displacement (mL)	1498
Displacement (L)	1.5
Induction Type	Natural aspiration
Cylinder Arrangement	L
Number of Cylinders	4
Valves per Cylinder	4
Valve Train	DOHC
Maximum Power (PS)	110
Max Power Speed (rpm)	6200
Max Torque Speed (rpm)	4100
Maximum net power (kW)	81
Fuel Grade	92.
Fuel Delivery System	Multi-point EFI
Cylinder Head Material	Aluminum alloy
Cylinder Block Material	Aluminum alloy
Engine layout	Horizontal

Screen/System

Central control color screen	<ul style="list-style-type: none">• Touch LCD screen
Infotainment Screen Size	<ul style="list-style-type: none">• 12 inches
Bluetooth/In-car Phone	<ul style="list-style-type: none">•
Smartphone Integration/Mirroring	<ul style="list-style-type: none">• Support CarPlay;• Support CarLife
Voice recognition control system	<ul style="list-style-type: none">• Multimedia system;• Navigation;• Telephone

Body

Body (continued)

Length (mm)	4678
Width (mm)	1806
Height (mm)	1474
Wheelbase (mm)	2688
Front Track (mm)	1546
Rear Track (mm)	1520
Door Opening Type	swing door
Number of Doors	4
Number of Seats	5
Fuel Tank Capacity (L)	51
Trunk volume (L)	510
Drag Coefficient (Cd)	-
Approach Angle (°)	15
Departure Angle (°)	14

Gearbox

Abbreviation	6-speed manual integration
Number of Gears	6
Transmission Type	Automatic Transmission with Manual Mode (AT)

Chassis steering

Drive Type	Front-engine, Front-wheel drive (FF)
Front Suspension Type	MacPherson independent suspension
Rear Suspension Type	Torsion beam non-independent suspension
Power Steering Type	Electric power assistance
Vehicle structure	bearing type

Seat Configuration

Seat Material	<ul style="list-style-type: none">• Imitation leather
Main seat adjustment	<ul style="list-style-type: none">• Front and rear adjustment;• Backrest adjustment;• Height adjustment (2-way)
Co-seat adjustment method	<ul style="list-style-type: none">• Front and rear adjustment;• Backrest adjustment
Electric adjustment of driver's seat and passenger seat	-

Seat Configuration (continued)

Front passenger seat rear adjustable buttons	-
Rear seat folding	• Proportional down
Front/rear center armrest	Front •/Rear •
Rear cup holder	•

Active safety

Anti-lock Braking System (ABS)	•
Electronic Brakeforce Distribution (EBD/CBC)	•
Brake Assist System (EBA/BAS/BA)	•
Traction Control System (ASR/TCS/TRC)	•
Electronic Stability Control (ESC/ESP/DSC)	•
Tire Pressure Monitoring System (TPMS)	• Tire pressure alarm
Seat Belt Reminder	• Front row
ISOFIX Child Seat Anchors	•
Lane Departure Warning System (LDWS)	•
Autonomous Emergency Braking (AEB)	•
Driver Fatigue Detection	-
Forward Collision Warning (FCW)	•

Air conditioning/refrigerator

Air conditioning temperature control method	• Manual air conditioning
Rear Independent Climate Control	-
Rear seat air vents	•
Temperature zone control	-
Car air purifier	-
In-cabin PM2.5 Filter	•

Passive safety

Driver/passenger airbag	Main •/Deputy •
--------------------------------	-----------------

Passive safety (continued)

Front/rear side airbags	Front •/Rear-
Front/rear head airbags (curtain airbags)	Front •/Rear •

Wheel brake

Front Brake Type	Ventilation disc
Rear Brake Type	Disc
Parking brake type	Electronic Parking
Front Tire Size	205/55 R16
Rear Tire Size	205/55 R16
Spare Tire Size	Not full-size
Spare tire placement	In the trunk

Audio/Interior Lighting

Number of speakers	• 6 speakers
Interior ambient lighting	• Monochrome

Driving functions

Navigation traffic information display	•
Lane assist	-
Lane Keeping Assist System	•
Cruise control system	• Cruise control
Satellite navigation system	•
Parking Assist	-

Exterior lighting

Low beam light source	•LED
High beam light source	•LED
LED daytime running lights	•
Adaptive high and low beam	-
Automatic headlights	•
Height-adjustable headlights	•
Headlight Delay Off	•
Turn signal lamp	•

Exterior mirrors

Exterior mirrors (continued)

Exterior mirror function	<ul style="list-style-type: none">•Electric adjustment;•Electric folding;•Rearview mirror heating;•Automatically turn down when reversing;•Automatically fold when locking the car
---------------------------------	--

Appearance/anti-theft

Rim material	<ul style="list-style-type: none">• Aluminum alloy
Electric trunk	-
Electronic engine immobilizer	<ul style="list-style-type: none">•
Central locking system in the car	<ul style="list-style-type: none">•
Key Type	<ul style="list-style-type: none">• Remote key
Keyless start system	<ul style="list-style-type: none">•
Keyless entry function	<ul style="list-style-type: none">• Front row

Skylight/Glass

Sunroof Type	<ul style="list-style-type: none">• Electric sunroof
Front/rear electric windows	Front •/Rear •
One-touch window lifting function	<ul style="list-style-type: none">• Full car
Window anti-pinch function	<ul style="list-style-type: none">•
Car makeup mirror	<ul style="list-style-type: none">• COPILOT
Rear wiper	-
Rain sensor wiper function	<ul style="list-style-type: none">• Rainfall-sensing

Interior and exterior color

Exterior Color	Opening remarks:#FFFFFF; Mysterious Black:#000103; Tianzhen Blue:#94B5C7; Cultural Silver:#C8C8C8
Interior Color	Black/Smoky Rain Green:#000000/#7C8187; Black/Mist Grey:#000000/#899299

Steering wheel/interior mirror

Steering Wheel Material	<ul style="list-style-type: none">• Leather
Steering wheel position adjustment	<ul style="list-style-type: none">• Manual up and down front and rear adjustment
Multi-function steering wheel	<ul style="list-style-type: none">•

Steering wheel/interior mirror (continued)

Heated Steering Wheel	-
Steering wheel memory	-
Trip computer display screen	• Color
Full LCD instrument panel	•
LCD instrument size	• 10.25 inches
Interior rearview mirror function	• Manual anti-glare
Gear shifting	• Mechanical gear shift

Intelligent configuration

Connected Car Services	•
OTA Updates	•
4G/5G Network	•4G
Mobile APP remote function	•
Wi-Fi hotspots	•

Driving Control

Driving mode switch	• Movement
Automatic parking	•
Hill start assist	•
Engine start-stop technology	•

Driving Hardware

Front/rear parking radar	Front-/Rear •
Driving Assistance Camera System	• Reversing image
Number of cameras	• 2
Number of ultrasonic radars	• 4
Millimeter wave radar quantity	• 1

In-car charging

Multimedia/charging port	•USB;•Type-C
Number of USB/Type-C ports	• 2 in the front row/2 in the back row

"●" = Standard equipment

"□" = Not available

"○" = Optional equipment.

Note: These are Chinese market vehicles. Warranty coverage is not available outside of China.