

# Vehicle Detail Report

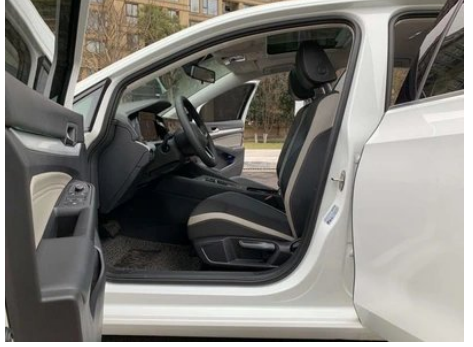
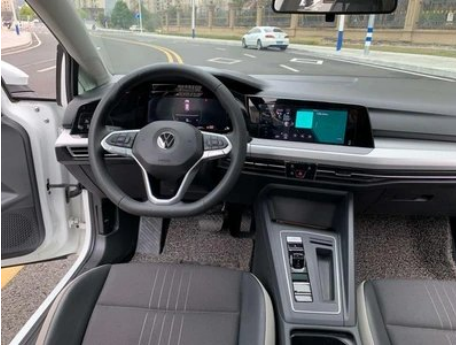
## Volkswagen Golf 2023 280TSI DSG Pro

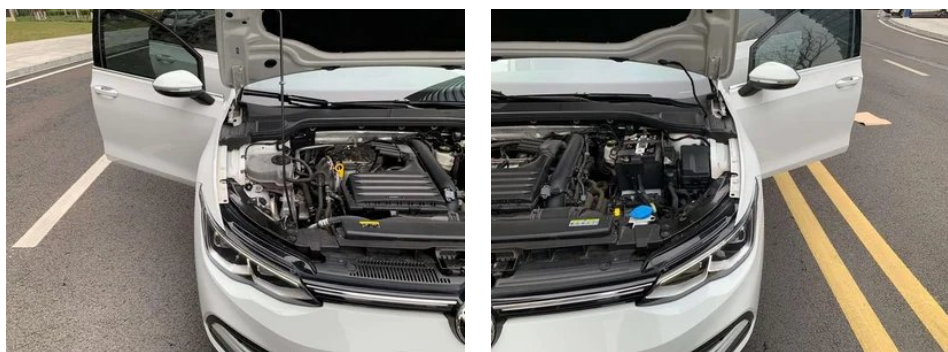
### Basic Information

Brand	Volkswagen
Mileage	14,000 km
Color	White
First Registration	2022-12-01
Transfer Count	0

### Vehicle Images







## Vehicle Condition

1. Right rocker panel, Paint repair. 2. Right rear quarter panel, Paint repair, Body panel repair.

## Configuration Information

### Model Information

<b>Model Name</b>	Volkswagen Golf 2023 280TSI DSG Pro
<b>Launch Date</b>	2022.11

### Basic parameters

<b>Vehicle Class</b>	compact car
<b>Energy Type</b>	Gasoline
<b>Maximum Power (kW)</b>	110
<b>Maximum Torque (N·m)</b>	250
<b>Transmission</b>	7-speed dry dual clutch
<b>Body Type</b>	Hatchback
<b>Engine</b>	1.4L 150 hp L4
<b>Dimensions (L×W×H) (mm)</b>	4296*1788*1471
<b>Official 0-100 km/h Acceleration (s)</b>	8.6
<b>Top Speed (km/h)</b>	200
<b>Curb Weight (kg)</b>	1360
<b>Maximum Gross Weight (kg)</b>	1820
<b>WLTP Combined Fuel Consumption (L/100km)</b>	6.11

### engine

<b>Engine Model</b>	EA211-DJS
<b>Displacement (mL)</b>	1395
<b>Displacement (L)</b>	1.4
<b>Induction Type</b>	Turbocharging
<b>Cylinder Arrangement</b>	L

## engine (continued)

<b>Number of Cylinders</b>	4
<b>Valves per Cylinder</b>	4
<b>Valve Train</b>	DOHC
<b>Maximum Power (PS)</b>	150
<b>Max Power Speed (rpm)</b>	5000-6000
<b>Max Torque Speed (rpm)</b>	1750-3000
<b>Maximum net power (kW)</b>	110
<b>Fuel Grade</b>	95.
<b>Fuel Delivery System</b>	Direct injection
<b>Cylinder Head Material</b>	Aluminum alloy
<b>Cylinder Block Material</b>	Aluminum alloy
<b>Engine layout</b>	Horizontal

## Screen/System

<b>Central control color screen</b>	<ul style="list-style-type: none"><li>• Touch LCD screen</li></ul>
<b>Infotainment Screen Size</b>	<ul style="list-style-type: none"><li>• 8.25 inches; ○ 10 inches</li></ul>
<b>Bluetooth/In-car Phone</b>	<ul style="list-style-type: none"><li>•</li></ul>
<b>Smartphone Integration/Mirroring</b>	<ul style="list-style-type: none"><li>• Support CarPlay</li></ul>
<b>Voice recognition control system</b>	<ul style="list-style-type: none"><li>○ Multimedia system; ○ Navigation; • Telephone; ○ Air conditioning</li></ul>

## Body

<b>Length (mm)</b>	4296
<b>Width (mm)</b>	1788
<b>Height (mm)</b>	1471
<b>Wheelbase (mm)</b>	2631
<b>Front Track (mm)</b>	1535
<b>Rear Track (mm)</b>	1510
<b>Door Opening Type</b>	swing door
<b>Number of Doors</b>	5
<b>Number of Seats</b>	5
<b>Fuel Tank Capacity (L)</b>	51
<b>Trunk volume (L)</b>	380
<b>Drag Coefficient (Cd)</b>	-

## Body (continued)

<b>Approach Angle (°)</b>	17
<b>Departure Angle (°)</b>	23
<b>Minimum Turning Radius (m)</b>	5.35

## Gearbox

<b>Abbreviation</b>	7-speed dry dual clutch
<b>Number of Gears</b>	7
<b>Transmission Type</b>	Dry Dual-Clutch Transmission (DCT)

## Chassis steering

<b>Drive Type</b>	Front-engine, Front-wheel drive (FF)
<b>Front Suspension Type</b>	MacPherson independent suspension
<b>Rear Suspension Type</b>	Multi-link independent suspension
<b>Power Steering Type</b>	Electric power assistance
<b>Vehicle structure</b>	bearing type

## Seat Configuration

<b>Seat Material</b>	• Leather/fabric mix-and-match
<b>Main seat adjustment</b>	• Front-to-back adjustment; • Backrest adjustment; • Height adjustment (2-way); ○ Lumbar support (4-way)
<b>Co-seat adjustment method</b>	• Front and rear adjustment; • Backrest adjustment; • Height adjustment (2-way)
<b>Electric adjustment of driver's seat and passenger seat</b>	Principal ○/Deputy-
<b>Electric seat memory function</b>	○ Driving position
<b>Front passenger seat rear adjustable buttons</b>	-
<b>Rear seat folding</b>	• Proportional down
<b>Front/rear center armrest</b>	Front •/Rear •
<b>Rear cup holder</b>	•

## Active safety

<b>Anti-lock Braking System (ABS)</b>	•
<b>Electronic Brakeforce Distribution (EBD/CBC)</b>	•

## Active safety (continued)

<b>Brake Assist System (EBA/BAS/BA)</b>	•
<b>Traction Control System (ASR/TCS/TRC)</b>	•
<b>Electronic Stability Control (ESC/ESP/DSC)</b>	•
<b>Tire Pressure Monitoring System (TPMS)</b>	• Tire pressure alarm
<b>Seat Belt Reminder</b>	• Full car
<b>ISOFIX Child Seat Anchors</b>	•
<b>Lane Departure Warning System (LDWS)</b>	-
<b>Autonomous Emergency Braking (AEB)</b>	○
<b>Driver Fatigue Detection</b>	•
<b>Forward Collision Warning (FCW)</b>	○

## Air conditioning/refrigerator

<b>Air conditioning temperature control method</b>	• Automatic air conditioning
<b>Rear Independent Climate Control</b>	-
<b>Rear seat air vents</b>	•
<b>Temperature zone control</b>	-
<b>Car air purifier</b>	-
<b>In-cabin PM2.5 Filter</b>	-

## Passive safety

<b>Driver/passenger airbag</b>	Main •/Deputy •
<b>Front/rear side airbags</b>	Front •/Rear-
<b>Front/rear head airbags (curtain airbags)</b>	Front •/Rear •

## Wheel brake

<b>Front Brake Type</b>	Ventilation disc
<b>Rear Brake Type</b>	Disc
<b>Parking brake type</b>	Electronic Parking
<b>Front Tire Size</b>	225/45 R17
<b>Rear Tire Size</b>	225/45 R17

## Wheel brake (continued)

<b>Spare Tire Size</b>	Not full-size
------------------------	---------------

## Audio/Interior Lighting

<b>Number of speakers</b>	• 7 speakers
<b>Interior ambient lighting</b>	• 10 colors
<b>Touch reading light</b>	•

## Driving functions

<b>Navigation traffic information display</b>	○
<b>Lane assist</b>	-
<b>Lane Keeping Assist System</b>	-
<b>Cruise control system</b>	• Cruise control; ○ Full speed adaptive cruise
<b>Satellite navigation system</b>	○
<b>Hands-off detection</b>	○
<b>Parking Assist</b>	-

## Exterior lighting

<b>Low beam light source</b>	•LED
<b>High beam light source</b>	•LED
<b>LED daytime running lights</b>	•
<b>Adaptive high and low beam</b>	-
<b>Automatic headlights</b>	•
<b>Height-adjustable headlights</b>	•
<b>Headlight Delay Off</b>	-
<b>Headlight rain and fog mode</b>	•

## Exterior mirrors

<b>Exterior mirror function</b>	•Electric adjustment; •Electric folding; ○Mirror memory; •Rearview mirror heating; ○Automatically turn down when reversing; •Automatically fold when locking the car
---------------------------------	--

## Appearance/anti-theft

<b>Rim material</b>	• Aluminum alloy
<b>Electric trunk</b>	-

## Appearance/anti-theft (continued)

<b>Electronic engine immobilizer</b>	<ul style="list-style-type: none"><li>•</li></ul>
<b>Central locking system in the car</b>	<ul style="list-style-type: none"><li>•</li></ul>
<b>Key Type</b>	<ul style="list-style-type: none"><li>• Remote key</li></ul>
<b>Keyless start system</b>	<ul style="list-style-type: none"><li>•</li></ul>
<b>Keyless entry function</b>	<ul style="list-style-type: none"><li>• Front row</li></ul>

## Skylight/Glass

<b>Sunroof Type</b>	<ul style="list-style-type: none"><li>• Electric sunroof</li></ul>
<b>Front/rear electric windows</b>	Front •/Rear •
<b>One-touch window lifting function</b>	<ul style="list-style-type: none"><li>• Full car</li></ul>
<b>Window anti-pinch function</b>	<ul style="list-style-type: none"><li>•</li></ul>
<b>Car makeup mirror</b>	<ul style="list-style-type: none"><li>• Main driver's lamp; • co-pilot's lamp</li></ul>
<b>Rear wiper</b>	<ul style="list-style-type: none"><li>•</li></ul>
<b>Rain sensor wiper function</b>	<ul style="list-style-type: none"><li>• Rainfall-sensing</li></ul>
<b>Heated water nozzle</b>	○

## Interior and exterior color

<b>Exterior Color</b>	Moon rock ash:#46494D; Polar white:#FFFFFF; Mayan gold:#564F4B; Manganese stone black:#010101; Ether red:#ED2E24
<b>Interior Color</b>	Black/Grey:#252B2A/#8C8D87; Black:#252B2A; Black/Yellow:#000000/#8F7F4C

## Steering wheel/interior mirror

<b>Steering Wheel Material</b>	<ul style="list-style-type: none"><li>• Cortex</li></ul>
<b>Steering wheel position adjustment</b>	<ul style="list-style-type: none"><li>• Manual up and down front and rear adjustment</li></ul>
<b>Multi-function steering wheel</b>	<ul style="list-style-type: none"><li>•</li></ul>
<b>Heated Steering Wheel</b>	○
<b>Steering wheel memory</b>	-
<b>Trip computer display screen</b>	<ul style="list-style-type: none"><li>• Color</li></ul>
<b>Full LCD instrument panel</b>	<ul style="list-style-type: none"><li>•</li></ul>

## Steering wheel/interior mirror (continued)

<b>LCD instrument size</b>	• 10.25 inches
<b>Interior rearview mirror function</b>	• Manual anti-glare
<b>Gear shifting</b>	• Electronic gear shift
<b>ETC Device</b>	○
<b>Steering Wheel Shift Paddles</b>	○

## Intelligent configuration

<b>Connected Car Services</b>	○
<b>OTA Updates</b>	-
<b>4G/5G Network</b>	○4G
<b>Mobile APP remote function</b>	○

## Driving Control

<b>Driving mode switch</b>	• Movement
<b>Automatic parking</b>	•
<b>Hill start assist</b>	•
<b>Energy recovery system</b>	•
<b>Engine start-stop technology</b>	•

## Driving Hardware

<b>Front/rear parking radar</b>	Front •/Rear •
<b>Driving Assistance Camera System</b>	• Reversing image

## In-car charging

<b>Multimedia/charging port</b>	•USB;•Type-C
<b>Number of USB/Type-C ports</b>	• 2 in the front row/2 in the back row; ○ 3 in the front row/2 in the back row
<b>Mobile phone wireless charging function</b>	• Front row

## Optional Package

## Optional Package (continued)

Optional Package	
	Driving assistance package (USD 0.15; including: ACC 3.0 advanced adaptive cruise system, Front Assist pre-collision safety system (including CEB city emergency braking), steering wheel heating function, steering wheel off-hand monitoring function); Driver electric seat package (USD 0.15; Including: driver's side 10-way electric adjustment seat (including 4-way lumbar support), driver's side seat memory function, passenger's side exterior rearview mirror reversing assist); warm season package (USD 74; Including: steering wheel heating function, front windshield cleaning nozzle heating); Smart interconnection package (USD 735; Including: CNS3.0 intelligent car navigation infotainment system: 10-inch touch color screen, car networking-intelligent joint control car, intelligent navigation, intelligent voice, intelligent entertainment, 10.25-inch high-end full LCD digital instrument (FPK Medium))

---

"●" = Standard equipment

"\_" = Not available

"○" = Optional equipment.

Note: These are Chinese market vehicles. Warranty coverage is not available outside of China.