

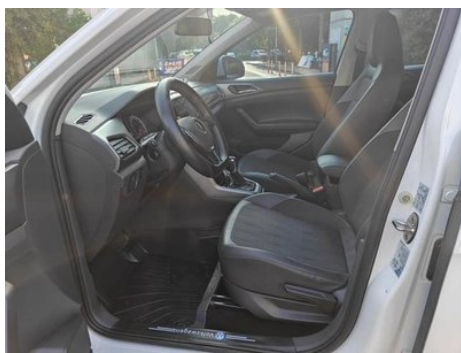
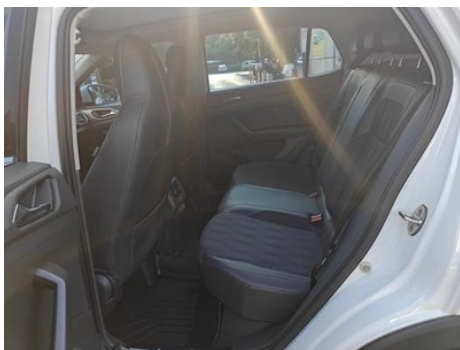
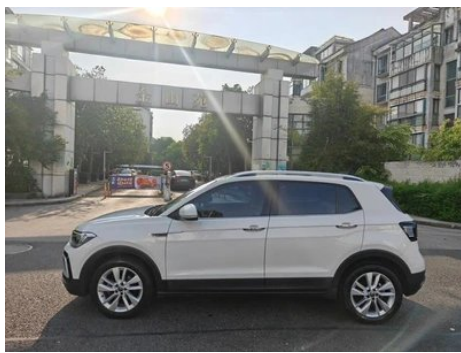
Vehicle Detail Report

Volkswagen T-Cross 2021 280TSI DSG Comfort Edition

Basic Information

| | |
|--------------------|------------|
| Brand | Volkswagen |
| Mileage | 73,000 km |
| Color | White |
| First Registration | 2021-06-01 |
| Transfer Count | 0 |

Vehicle Images





Vehicle Condition

1. Hood, Paint repair. 2. Left front door, Body panel repair. 3. Right front door, Paint repair. 4. Left rear door, Paint repair. 5. Left front fender, Body panel repair. 6. Right front fender, Paint repair.

Configuration Information

Model Information

| | |
|--------------------|--|
| Model Name | Volkswagen T-Cross 2021 280TSI DSG Comfort Edition |
| Launch Date | 2020.11 |

Basic parameters

| | |
|---|-------------------------|
| Vehicle Class | Small SUV |
| Energy Type | Gasoline |
| Maximum Power (kW) | 110 |
| Maximum Torque (N·m) | 250 |
| Transmission | 7-speed dry dual clutch |
| Body Type | SUV |
| Engine | 1.4L 150 hp L4 |
| Dimensions (L×W×H) (mm) | 4218*1760*1599 |
| Official 0-100 km/h Acceleration (s) | 8.8 |
| Top Speed (km/h) | 190 |
| Curb Weight (kg) | - |
| Maximum Gross Weight (kg) | - |
| NEDC Combined Fuel Consumption (L/100km) | 5.7 |

engine

| | |
|--------------------------|---------------|
| Engine Model | EA211-DJS |
| Displacement (mL) | 1395 |
| Displacement (L) | 1.4 |
| Induction Type | Turbocharging |

engine (continued)

| | |
|--------------------------------|------------------|
| Cylinder Arrangement | L |
| Number of Cylinders | 4 |
| Valves per Cylinder | 4 |
| Valve Train | DOHC |
| Maximum Power (PS) | 150 |
| Max Power Speed (rpm) | 5000 |
| Max Torque Speed (rpm) | 1750-3000 |
| Maximum net power (kW) | 110 |
| Fuel Grade | 95. |
| Fuel Delivery System | Direct injection |
| Cylinder Head Material | Aluminum alloy |
| Cylinder Block Material | Aluminum alloy |
| Engine layout | Horizontal |

Screen/System

| | |
|--|--|
| Central control color screen | <ul style="list-style-type: none">• Touch LCD screen |
| Infotainment Screen Size | <ul style="list-style-type: none">•9.2 inches |
| Bluetooth/In-car Phone | <ul style="list-style-type: none">• |
| Smartphone Integration/ Mirroring | <ul style="list-style-type: none">• Apple CarPlay support;• Baidu CarLife support |
| Voice recognition control system | <ul style="list-style-type: none">• Multimedia system;• Navigation;• Telephone |

Body

| | |
|-------------------------------|------------|
| Length (mm) | 4218 |
| Width (mm) | 1760 |
| Height (mm) | 1599 |
| Wheelbase (mm) | 2651 |
| Front Track (mm) | 1533 |
| Rear Track (mm) | 1512 |
| Door Opening Type | swing door |
| Number of Doors | 5 |
| Number of Seats | 5 |
| Fuel Tank Capacity (L) | 42.5 |
| Trunk volume (L) | 329-1319 |
| Drag Coefficient (Cd) | - |

Body (continued)

| | |
|----------------------------|----|
| Approach Angle (°) | 18 |
| Departure Angle (°) | 22 |

Gearbox

| | |
|--------------------------|------------------------------------|
| Abbreviation | 7-speed dry dual clutch |
| Number of Gears | 7 |
| Transmission Type | Dry Dual-Clutch Transmission (DCT) |

Chassis steering

| | |
|------------------------------|---|
| Drive Type | Front-engine, Front-wheel drive (FF) |
| Front Suspension Type | MacPherson independent suspension |
| Rear Suspension Type | Torsion beam non-independent suspension |
| Power Steering Type | Electric power assistance |
| Vehicle structure | bearing type |

Seat Configuration

| | |
|--|---|
| Seat Material | • Leather/fabric mix-and-match |
| Main seat adjustment | • Front and rear adjustment; • Backrest adjustment; • Height adjustment (2-way) |
| Co-seat adjustment method | • Front and rear adjustment; • Backrest adjustment |
| Electric adjustment of driver's seat and passenger seat | - |
| Front passenger seat rear adjustable buttons | - |
| Rear seat folding | • Proportional down |
| Front/rear center armrest | Front •/Rear- |
| Rear cup holder | - |

Active safety

| | |
|---|---|
| Anti-lock Braking System (ABS) | • |
| Electronic Brakeforce Distribution (EBD/CBC) | • |
| Brake Assist System (EBA/BAS/BA) | • |
| Traction Control System (ASR/TCS/TRC) | • |

Active safety (continued)

| | |
|---|-----------------------|
| Electronic Stability Control (ESC/ESP/DSC) | • |
| Tire Pressure Monitoring System (TPMS) | • Tire pressure alarm |
| Seat Belt Reminder | • Full vehicle |
| ISOFIX Child Seat Anchors | • |
| Lane Departure Warning System (LDWS) | - |
| Autonomous Emergency Braking (AEB) | • |
| Driver Fatigue Detection | - |

Air conditioning/refrigerator

| | |
|--|---------------------------|
| Air conditioning temperature control method | • Manual air conditioning |
| Rear Independent Climate Control | - |
| Rear seat air vents | • |
| Temperature zone control | - |
| Car air purifier | - |
| In-cabin PM2.5 Filter | • |

Passive safety

| | |
|--|-----------------|
| Driver/passenger airbag | Main •/Deputy • |
| Front/rear side airbags | Front •/Rear- |
| Front/rear head airbags (curtain airbags) | Front •/Rear • |

Wheel brake

| | |
|---------------------------|------------------|
| Front Brake Type | Ventilation disc |
| Rear Brake Type | Disc |
| Parking brake type | handbrake |
| Front Tire Size | - |
| Rear Tire Size | 205/55 R17 |
| Spare Tire Size | Not full-size |

Audio/Interior Lighting

| | |
|----------------------------------|--------------|
| Number of speakers | • 4 speakers |
| Interior ambient lighting | • Monochrome |

Driving functions

Driving functions (continued)

| | |
|---|--|
| Navigation traffic information display | <ul style="list-style-type: none">• |
| Lane assist | - |
| Lane Keeping Assist System | - |
| Cruise control system | <ul style="list-style-type: none">• Cruise control |
| Satellite navigation system | <ul style="list-style-type: none">• |
| Parking Assist | - |

Exterior lighting

| | |
|-------------------------------------|---|
| Low beam light source | <ul style="list-style-type: none">• LED |
| High beam light source | <ul style="list-style-type: none">• LED |
| LED daytime running lights | <ul style="list-style-type: none">• |
| Adaptive high and low beam | - |
| Automatic headlights | - |
| Front fog lights | <ul style="list-style-type: none">• Halogen |
| Height-adjustable headlights | <ul style="list-style-type: none">• |
| Headlight Delay Off | - |
| Turn signal lamp | <ul style="list-style-type: none">• |

Exterior mirrors

| | |
|---------------------------------|---|
| Exterior mirror function | <ul style="list-style-type: none">• Electric adjustment;• Mirror heating |
|---------------------------------|---|

Appearance/anti-theft

| | |
|--|--|
| Rim material | <ul style="list-style-type: none">• Aluminum alloy |
| Electric trunk | - |
| Electronic engine immobilizer | <ul style="list-style-type: none">• |
| Central locking system in the car | <ul style="list-style-type: none">• |
| Key Type | <ul style="list-style-type: none">• Remote key |
| Keyless start system | <ul style="list-style-type: none">• |
| Keyless entry function | <ul style="list-style-type: none">• Front row |
| Roof rack | <ul style="list-style-type: none">• |

Skylight/Glass

| | |
|---------------------|--|
| Sunroof Type | <ul style="list-style-type: none">• Openable panoramic sunroof |
|---------------------|--|

Skylight/Glass (continued)

| | |
|--|---|
| Front/rear electric windows | Front •/Rear • |
| One-touch window lifting function | • Full vehicle |
| Window anti-pinch function | • |
| Car makeup mirror | • Main driver's lamp; • co-pilot's lamp |
| Rear wiper | • |

Interior and exterior color

| | |
|-----------------------|---|
| Exterior Color | Starry Gray #878787 Roman Red #B91119 Vitality Gold #9F8C30 dream blue #5F86C6 Polar White #FFFFFF |
| Interior Color | dream blue Gray-black #A4C7EF #4C525E Vitality Gold Gray-black #E68508 #555D63 Roman Red Gray-black #B91119 #4C525E Black #000000 Vitality Gold Gray-blue #E68508 #636977 Starry Gray Black #878787 #000000 |

Steering wheel/interior mirror

| | |
|---|--|
| Steering Wheel Material | • Plastic |
| Steering wheel position adjustment | • Manual up and down front and rear adjustment |
| Multi-function steering wheel | • |
| Heated Steering Wheel | - |
| Steering wheel memory | - |
| Trip computer display screen | • Monochrome |
| Full LCD instrument panel | - |
| Interior rearview mirror function | • Manual anti-glare |

Intelligent configuration

| | |
|-------------------------------|---|
| Connected Car Services | • |
| OTA Updates | - |

Driving Control

| | |
|----------------------------|------------|
| Driving mode switch | • Movement |
| Automatic parking | - |
| Hill start assist | • |

Driving Control (continued)

| | |
|-------------------------------------|---|
| Engine start-stop technology | • |
|-------------------------------------|---|

Driving Hardware

| | |
|---|-------------------|
| Front/rear parking radar | Front-/Rear • |
| Driving Assistance Camera System | • Reversing image |

In-car charging

| | |
|-----------------------------------|--|
| Multimedia/charging port | •USB;•Type-C |
| Number of USB/Type-C ports | • 2 in the front row/2 in the back row |

"●" = Standard equipment

"-" = Not available

"○" = Optional equipment.

Note: These are Chinese market vehicles. Warranty coverage is not available outside of China.