

Vehicle Detail Report

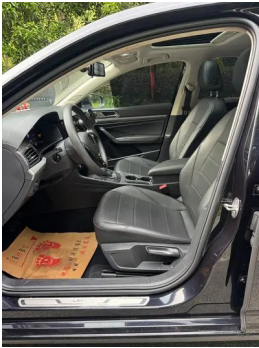
Lavida 2021 1.5L Auto Comfort Edition

Basic Information

Brand	Volkswagen
Mileage	38,900 km
Color	Black
First Registration	2021-08-01
Transfer Count	0

Vehicle Images





Vehicle Condition

1. Left rear fender, Paint repair, Bodywork repair.

Configuration Information

Model Information

Model Name	Lavida 2021 1.5L Auto Comfort Edition
-------------------	---------------------------------------

Model Information (continued)

Launch Date	2020.09
--------------------	---------

Basic parameters

Vehicle Class	compact car
Energy Type	Gasoline
Maximum Power (kW)	83
Maximum Torque (N·m)	145
Transmission	6-speed manual integration
Body Type	Sedan
Engine	1.5L 113 horsepower L4
Dimensions (L×W×H) (mm)	4670*1806*1474
Official 0-100 km/h Acceleration (s)	14
Top Speed (km/h)	190
Curb Weight (kg)	1265
Maximum Gross Weight (kg)	-
NEDC Combined Fuel Consumption (L/100km)	5.5

engine

Engine Model	EA211-DMB
Displacement (mL)	1498
Displacement (L)	1.5
Induction Type	Natural aspiration
Cylinder Arrangement	L
Number of Cylinders	4
Valves per Cylinder	4
Valve Train	DOHC
Maximum Power (PS)	113
Max Power Speed (rpm)	6000
Max Torque Speed (rpm)	3900
Maximum net power (kW)	83
Fuel Grade	92.
Fuel Delivery System	Multi-point EFI
Cylinder Head Material	Aluminum alloy

engine (continued)

Cylinder Block Material	Aluminum alloy
Engine layout	Horizontal

Screen/System

Central control color screen	<ul style="list-style-type: none">• Touch LCD screen
Infotainment Screen Size	<ul style="list-style-type: none">• 8 inches
Bluetooth/In-car Phone	<ul style="list-style-type: none">•
Smartphone Integration/Mirroring	<ul style="list-style-type: none">•
Voice recognition control system	<ul style="list-style-type: none">• Multimedia system;• Telephone

Body

Length (mm)	4670
Width (mm)	1806
Height (mm)	1474
Wheelbase (mm)	2688
Front Track (mm)	-
Rear Track (mm)	-
Door Opening Type	-
Number of Doors	4
Number of Seats	5
Fuel Tank Capacity (L)	51
Trunk volume (L)	510
Drag Coefficient (Cd)	-

Gearbox

Abbreviation	6-speed manual integration
Number of Gears	6
Transmission Type	Automatic Transmission with Manual Mode (AT)

Chassis steering

Drive Type	Front-engine, Front-wheel drive (FF)
Front Suspension Type	MacPherson independent suspension
Rear Suspension Type	Torsion beam non-independent suspension
Power Steering Type	Electric power assistance

Chassis steering (continued)

Vehicle structure	bearing type
--------------------------	--------------

Seat Configuration

Seat Material	<ul style="list-style-type: none">• Imitation leather
Main seat adjustment	<ul style="list-style-type: none">• Front and rear adjustment;• Backrest adjustment;• Height adjustment (2-way)
Co-seat adjustment method	<ul style="list-style-type: none">• Front and rear adjustment;• Backrest adjustment
Electric adjustment of driver's seat and passenger seat	-
Front passenger seat rear adjustable buttons	-
Rear seat folding	<ul style="list-style-type: none">• Proportional down
Front/rear center armrest	Front •/Rear-
Rear cup holder	-

Active safety

Anti-lock Braking System (ABS)	<ul style="list-style-type: none">•
Electronic Brakeforce Distribution (EBD/CBC)	<ul style="list-style-type: none">•
Brake Assist System (EBA/BAS/BA)	<ul style="list-style-type: none">•
Traction Control System (ASR/TCS/TRC)	<ul style="list-style-type: none">•
Electronic Stability Control (ESC/ESP/DSC)	<ul style="list-style-type: none">•
Tire Pressure Monitoring System (TPMS)	<ul style="list-style-type: none">• Tire pressure alarm
Seat Belt Reminder	<ul style="list-style-type: none">• Full car
ISOFIX Child Seat Anchors	<ul style="list-style-type: none">•
Lane Departure Warning System (LDWS)	-
Autonomous Emergency Braking (AEB)	<ul style="list-style-type: none">•
Driver Fatigue Detection	-

Air conditioning/refrigerator

Air conditioning temperature control method	<ul style="list-style-type: none">• Manual air conditioning
--	---

Air conditioning/refrigerator (continued)

Rear Independent Climate Control	-
Rear seat air vents	•
Temperature zone control	-
Car air purifier	-
In-cabin PM2.5 Filter	•

Passive safety

Driver/passenger airbag	Main •/Deputy •
Front/rear side airbags	Front •/Rear-
Front/rear head airbags (curtain airbags)	Front •/Rear •

Wheel brake

Front Brake Type	Ventilation disc
Rear Brake Type	Disc
Parking brake type	Electronic Parking
Front Tire Size	205/55 R16
Rear Tire Size	205/55 R16
Spare Tire Size	Not full-size

Audio/Interior Lighting

Number of speakers	• 6 speakers
---------------------------	--------------

Driving functions

Navigation traffic information display	-
Lane assist	-
Lane Keeping Assist System	-
Satellite navigation system	-
Parking Assist	-

Exterior lighting

Low beam light source	•LED
High beam light source	•LED
LED daytime running lights	•
Adaptive high and low beam	-
Automatic headlights	○

Exterior lighting (continued)

Front fog lights	• Halogen
Height-adjustable headlights	•
Headlight Delay Off	○
Turn signal lamp	•

Exterior mirrors

Exterior mirror function	• Electric adjustment; • Mirror heating, • Reversing, Automatic downturning
---------------------------------	---

Appearance/anti-theft

Rim material	• Aluminum alloy
Electric trunk	-
Electronic engine immobilizer	•
Central locking system in the car	•
Key Type	• Remote key
Keyless start system	-

Skylight/Glass

Sunroof Type	• Electric sunroof
Front/rear electric windows	Front •/Rear •
One-touch window lifting function	• Full car
Window anti-pinch function	•
Car makeup mirror	• COPILOT
Rear wiper	-
Rain sensor wiper function	○ Rainfall-sensing

Interior and exterior color

Exterior Color	Elegant white:#FCFFFF; Elegant gold:#BAA08C; Sharp silver:#EDED; Modesty and purple:#4D3747; Mysterious Black:#000103
Interior Color	Black:#000000, Black, Beige, #1D1E20/#AAABA6, Black, Brown, #1D1D1D/#723D1B

Steering wheel/interior mirror

Steering wheel/interior mirror (continued)

Steering Wheel Material	• Plastic, ○ Cortex
Steering wheel position adjustment	• Manual up and down front and rear adjustment
Multi-function steering wheel	•
Heated Steering Wheel	-
Steering wheel memory	-
Trip computer display screen	• Monochrome; ○ Color
Full LCD instrument panel	-
LCD instrument size	○ 8 inches
Interior rearview mirror function	• Manual anti-glare

Intelligent configuration

Connected Car Services	-
OTA Updates	-

Driving Control

Driving mode switch	• Movement
Automatic parking	•
Hill start assist	•
Engine start-stop technology	•

Driving Hardware

Front/rear parking radar	Front-/Rear •
Driving Assistance Camera System	○ Reversing image

In-car charging

Multimedia/charging port	• USB; • Type-C
Number of USB/Type-C ports	• 1 in the front row/2 in the back row

Optional Package

Optional Package (continued)

Optional Package	Optional package, 2 (1 yuan; Including: parking rear view image system, 16-inch precision car aluminum alloy wheel hub), Optional package, 3 (USD 44; Including: leather kit (steering wheel, shift ball head)), Optional package, 4 (USD 59; Including: 8-inch digital LCD meter, headlight leaving home function, photosensitive automatic opening, rain sensor mute boneless wiper)
-------------------------	--

"●" = Standard equipment

"_" = Not available

"○" = Optional equipment.

Note: These are Chinese market vehicles. Warranty coverage is not available outside of China.