

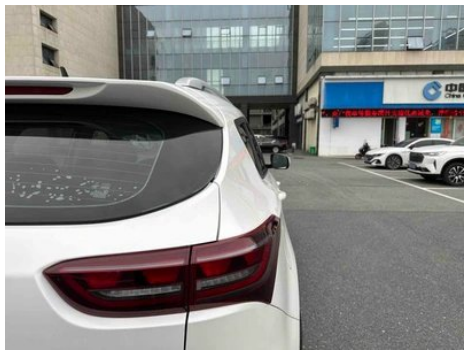
Vehicle Detail Report

Jetour X70M 2020 1.5T Manual Travel Companion Type

Basic Information

Brand	Jetour
Mileage	76,000 km
Color	White
First Registration	2020-07-01
Transfer Count	1

Vehicle Images







Vehicle Condition

1. Right rear frame rail, Corrosion. 2. Hood, Scratch. 3. Front bumper, Paint repair, Replaced, Scrape. 4. Rear bumper, Paint chip, Paint repair, Scratch damage. 5. Left front door, Paint repair. 6. Right front door, Scratch. 7. Left rear door, Scratch. 8. Right rear door, Paint repair, Body panel repair. 9. Left front fender, Paint repair, Body panel repair. 10. Right front fender, Scratch. 11. Left rear quarter panel, Paint repair, Body panel repair. 12. Right rear quarter panel, Scratch. 13. Windshield, Stone chip. 14. Rear windshield, Stone chip. 15. Left rear door glass, Scratch. 16. Left tail light, Scratch. 17. Right tail light, Scratch.

Configuration Information

Model Information

Model Name	Jetour X70M 2020 1.5T Manual Travel Companion Type
Launch Date	2019.12

Basic parameters

Vehicle Class	Mid-size SUV
Energy Type	Gasoline
Maximum Power (kW)	115
Maximum Torque (N·m)	230
Transmission	6-speed manual
Body Type	SUV
Engine	1.5T 156 horsepower L4
Dimensions (L×W×H) (mm)	4755*1885*1710
Official 0-100 km/h Acceleration (s)	-
Top Speed (km/h)	-
Curb Weight (kg)	-
Maximum Gross Weight (kg)	-
NEDC Combined Fuel Consumption (L/100km)	7.5

engine

Engine Model	SQRE4T15C
Displacement (mL)	1498

engine (continued)

Displacement (L)	1.5
Induction Type	Turbocharging
Cylinder Arrangement	L
Number of Cylinders	4
Valves per Cylinder	4
Compression Ratio	9.5
Valve Train	DOHC
Bore (mm)	77
Stroke (mm)	80.5
Maximum Power (PS)	156
Max Power Speed (rpm)	5500
Max Torque Speed (rpm)	1750-4000
Maximum net power (kW)	108
Fuel Grade	92.
Fuel Delivery System	Multi-point EFI
Cylinder Head Material	Aluminum alloy
Cylinder Block Material	Cast iron
Engine layout	Horizontal

Screen/System

Central control color screen	<ul style="list-style-type: none">• Touch LCD screen
Infotainment Screen Size	<ul style="list-style-type: none">• 10.1 inches
Bluetooth/In-car Phone	<ul style="list-style-type: none">•
Smartphone Integration/ Mirroring	<ul style="list-style-type: none">• Baidu CarLife support

Body

Length (mm)	4755
Width (mm)	1885
Height (mm)	1710
Wheelbase (mm)	2745
Front Track (mm)	1608
Rear Track (mm)	1603
Door Opening Type	-
Number of Doors	5

Body (continued)

Number of Seats	5
Fuel Tank Capacity (L)	55
Trunk volume (L)	-
Drag Coefficient (Cd)	-

Gearbox

Abbreviation	6-speed manual
Number of Gears	6
Transmission Type	Manual Transmission (MT)

Chassis steering

Drive Type	Front-engine, Front-wheel drive (FF)
Front Suspension Type	MacPherson independent suspension
Rear Suspension Type	Multi-link independent suspension
Power Steering Type	Electric power assistance
Vehicle structure	bearing type

Seat Configuration

Seat Material	<ul style="list-style-type: none">• Imitation leather
Main seat adjustment	<ul style="list-style-type: none">• Front and rear adjustment;• Backrest adjustment;• Height adjustment (2-way)
Co-seat adjustment method	<ul style="list-style-type: none">• Front and rear adjustment;• Backrest adjustment
Electric adjustment of driver's seat and passenger seat	-
Front passenger seat rear adjustable buttons	-
Second row seat adjustment	<ul style="list-style-type: none">○ Front and rear adjustment;• Backrest adjustment
Rear seat folding	<ul style="list-style-type: none">• Proportional down
Front/rear center armrest	Front •/Rear •
Rear cup holder	<ul style="list-style-type: none">•
Seat Layout	○2-3-2;○2-2-2
Second row independent seats	○

Active safety

Anti-lock Braking System (ABS)	<ul style="list-style-type: none">•
---------------------------------------	---

Active safety (continued)

Electronic Brakeforce Distribution (EBD/CBC)	•
Brake Assist System (EBA/BAS/BA)	•
Traction Control System (ASR/TCS/TRC)	•
Electronic Stability Control (ESC/ESP/DSC)	•
Tire Pressure Monitoring System (TPMS)	• Tire pressure display
Seat Belt Reminder	• Main driving position
ISOFIX Child Seat Anchors	•
Lane Departure Warning System (LDWS)	-
Autonomous Emergency Braking (AEB)	-
Driver Fatigue Detection	-

Air conditioning/refrigerator

Air conditioning temperature control method	• Manual air conditioning
Rear Independent Climate Control	-
Rear seat air vents	•
Temperature zone control	-
Car air purifier	-
In-cabin PM2.5 Filter	-

Passive safety

Driver/passenger airbag	Main •/Deputy •
Front/rear side airbags	-
Front/rear head airbags (curtain airbags)	-

Wheel brake

Front Brake Type	Ventilation disc
Rear Brake Type	Disc
Parking brake type	Electronic Parking
Front Tire Size	235/65 R17
Rear Tire Size	235/65 R17

Wheel brake (continued)

Spare Tire Size	Not full-size
------------------------	---------------

Audio/Interior Lighting

Number of speakers	<ul style="list-style-type: none">• 4 speakers
Interior ambient lighting	<ul style="list-style-type: none">• Monochrome

Driving functions

Navigation traffic information display	-
Lane assist	-
Lane Keeping Assist System	-
Cruise control system	<ul style="list-style-type: none">• Cruise control
Satellite navigation system	-
Parking Assist	-

Exterior lighting

Low beam light source	<ul style="list-style-type: none">• Halogen
High beam light source	<ul style="list-style-type: none">• Halogen
LED daytime running lights	-
Adaptive high and low beam	-
Automatic headlights	-
Height-adjustable headlights	<ul style="list-style-type: none">•
Headlight Delay Off	-

Exterior mirrors

Exterior mirror function	<ul style="list-style-type: none">• Electric adjustment;• Mirror heating
---------------------------------	---

Appearance/anti-theft

Rim material	<ul style="list-style-type: none">• Aluminum alloy
Electric trunk	-
Central locking system in the car	<ul style="list-style-type: none">•
Key Type	<ul style="list-style-type: none">• Remote key
Keyless start system	-
Roof rack	<ul style="list-style-type: none">•

Skylight/Glass

Sunroof Type	<input type="radio"/> Panoramic sunroof available
---------------------	---

Skylight/Glass (continued)

Front/rear electric windows	Front •/Rear •
One-touch window lifting function	• Full vehicle
Window anti-pinch function	•
Rear wiper	•

Interior and exterior color

Exterior Color	Glacier White #F0F0F0 Beach Gold #59492D Starry Black #000000
Interior Color	Black:#000000

Steering wheel/interior mirror

Steering Wheel Material	• Cortex
Steering wheel position adjustment	• Manual up and down adjustment
Multi-function steering wheel	•
Heated Steering Wheel	-
Steering wheel memory	-
Trip computer display screen	• Monochrome
Full LCD instrument panel	-
LCD instrument size	• 4.3-inch
Interior rearview mirror function	• Manual anti-glare

Intelligent configuration

Connected Car Services	-
OTA Updates	-

Driving Control

Automatic parking	•
Hill start assist	•

Driving Hardware

Front/rear parking radar	-
Driving Assistance Camera System	• Reversing image

In-car charging

Multimedia/charging port	•USB
---------------------------------	------

In-car charging (continued)

Number of USB/Type-C ports	• 1 in the front row
Luggage compartment 12V power socket	•

"●" = Standard equipment

"_" = Not available

"○" = Optional equipment.

Note: These are Chinese market vehicles. Warranty coverage is not available outside of China.