

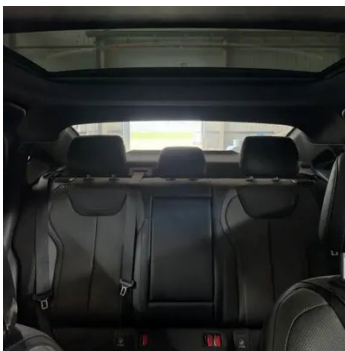
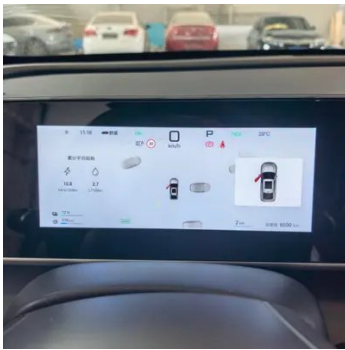
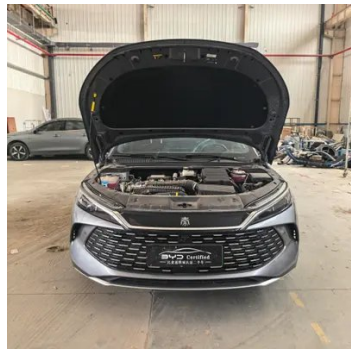
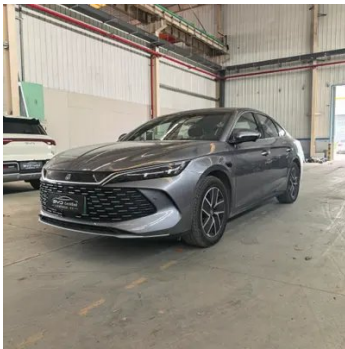
Vehicle Detail Report

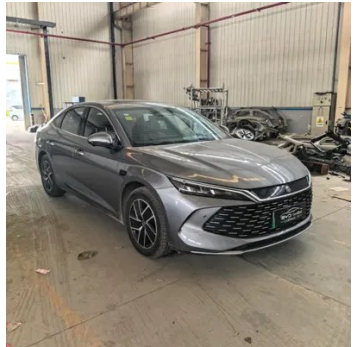
BYD Qin L 2025 Smart Driving Version DM-i 120KM Transcendent

Basic Information

Brand	BYD
Mileage	6,500 km
Color	Dark gray
First Registration	2025-03-01
Transfer Count	0

Vehicle Images





Vehicle Condition

1. Original metal body panels with factory paint.

Configuration Information

Model Information

Model Name	BYD Qin L 2025 DM-i Smart Driving Version 120KM Transcendent
Launch Date	2025.02

Basic parameters

Vehicle Class	Mid-size car
Energy Type	Plug-in Hybrid Electric Vehicle (PHEV)
Maximum Power (kW)	74

Basic parameters (continued)

Maximum Torque (N·m)	126
Transmission	E-CVT continuously variable transmission
Body Type	Sedan
Engine	1.5L 101 hp L4
Dimensions (L×W×H) (mm)	4830*1900*1495
Official 0-100 km/h Acceleration (s)	7.5
Top Speed (km/h)	180
Curb Weight (kg)	1775
Maximum Gross Weight (kg)	2150
Fast Charging Time (h)	0.42
Slow Charging Time (h)	2.5
Electric Motor (PS)	218
Fast Charging Range (%)	30-80
Electricity Consumption in Fuel Equivalent (L/100km)	1.54
WLTC Electric Range (km)	90
WLTP Combined Fuel Consumption (L/100km)	1.11
CLTC Electric Range (km)	120
Battery slow charging capacity range (%)	15-100
Lowest state-of-charge fuel consumption (L/100km) WLTC	3.98
Minimum state of charge fuel consumption (L/100km) NEDC	3.08

engine

Engine Model	BYD472QC
Displacement (mL)	1498
Displacement (L)	1.5
Induction Type	Natural aspiration
Cylinder Arrangement	L
Number of Cylinders	4

engine (continued)

Valves per Cylinder	4
Valve Train	DOHC
Maximum Power (PS)	101
Max Power Speed (rpm)	-
Max Torque Speed (rpm)	-
Maximum net power (kW)	70
Fuel Grade	92.
Fuel Delivery System	Multi-point EFI
Cylinder Head Material	Aluminum alloy
Cylinder Block Material	Aluminum alloy
Engine layout	Horizontal

Electric Motor

Motor Type	Permanent magnet/synchronous
Total Electric Motor Power (kW)	160
Total Electric Motor Torque (N·m)	260
Front Electric Motor Max Power (kW)	160
Front Electric Motor Max Torque (N·m)	260
Number of drive motors	Single motor
Motor Layout	Front-end
Battery Type	Lithium iron phosphate battery
Battery Capacity (kWh)	15.87
Total Electric Motor Power (PS)	218
Battery Cell Brand	Fordy
Battery Cooling System	Direct cooling
Power consumption per 100 kilometers (kWh/100km)	13.6
Fast charging function	Support
Slow charging port location	Rear right side of the car
Warranty policy for first-time owners of Sandian	Lifetime Warranty/Non-operational (Liability Exemption Terms Subject to Official)

Electric Motor (continued)

Fast charging port location	Rear right side of the car
Previous Motor Brand	BYD
Front motor model	TZ210XYC
Fast Charging Power (kW)	23
Battery unique technology	Blade Battery

Screen/System

Central control color screen	<ul style="list-style-type: none">• Touch LCD screen
Infotainment Screen Size	<ul style="list-style-type: none">• 12.8 inches
Bluetooth/In-car Phone	<ul style="list-style-type: none">•
Smartphone Integration/Mirroring	<ul style="list-style-type: none">•
Voice recognition control system	<ul style="list-style-type: none">• Multimedia system;• Navigation;• Telephone;• Air conditioning;• Sunroof
Voice wake-up recognition by region	<ul style="list-style-type: none">• Dual Zone
In-vehicle intelligent system	<ul style="list-style-type: none">•DiLink
App Store	<ul style="list-style-type: none">•
Central control screen type	<ul style="list-style-type: none">•LCD
Voice assistant wake-up word	<ul style="list-style-type: none">• Hello, Xiao Di
Continuous speech recognition	<ul style="list-style-type: none">•
See and Say	<ul style="list-style-type: none">•
Car Intelligent Chip	BYD, D100
Central control LCD screen split screen display	<ul style="list-style-type: none">•

Body

Length (mm)	4830
Width (mm)	1900
Height (mm)	1495
Wheelbase (mm)	2790
Front Track (mm)	1620

Body (continued)

Rear Track (mm)	1620
Door Opening Type	swing door
Number of Doors	4
Number of Seats	5
Fuel Tank Capacity (L)	65
Trunk volume (L)	-
Drag Coefficient (Cd)	0.26
Approach Angle (°)	13
Departure Angle (°)	14
Minimum Turning Radius (m)	5.6

Gearbox

Abbreviation	E-CVT continuously variable transmission
Number of Gears	stepless speed change
Transmission Type	Electronic Continuously Variable Transmission (E-CVT)

Chassis steering

Drive Type	Front-engine, Front-wheel drive (FF)
Front Suspension Type	MacPherson independent suspension
Rear Suspension Type	Multi-link independent suspension
Power Steering Type	Electric power assistance
Vehicle structure	bearing type

Seat Configuration

Seat Material	<ul style="list-style-type: none">• Imitation leather
Main seat adjustment	<ul style="list-style-type: none">• Front and rear adjustment;• Backrest adjustment;• Height adjustment (2-way)
Co-seat adjustment method	<ul style="list-style-type: none">• Front and rear adjustment;• Backrest adjustment
Electric adjustment of driver's seat and passenger seat	Main •/Deputy •
Front seat functions	<ul style="list-style-type: none">• Heating;• Ventilation
Front passenger seat rear adjustable buttons	-
Rear seat folding	<ul style="list-style-type: none">• Proportional down

Seat Configuration (continued)

Front/rear center armrest	Front •/Rear •
Rear cup holder	•

Active safety

Anti-lock Braking System (ABS)	•
Electronic Brakeforce Distribution (EBD/CBC)	•
Brake Assist System (EBA/BAS/BA)	•
Traction Control System (ASR/TCS/TRC)	•
Electronic Stability Control (ESC/ESP/DSC)	•
Tire Pressure Monitoring System (TPMS)	• Tire pressure display
Seat Belt Reminder	• Full car
ISOFIX Child Seat Anchors	•
Lane Departure Warning System (LDWS)	•
Autonomous Emergency Braking (AEB)	•
Driver Fatigue Detection	-
Forward Collision Warning (FCW)	•
Rear Collision Warning	•
Low Speed Alert	•
Emergency Call System (eCall)	•
Built-in Dashcam	•
Door Opening Warning (DOW)	•
Sentry Mode	•

Air conditioning/refrigerator

Air conditioning temperature control method	• Automatic air conditioning
Rear Independent Climate Control	-
Rear seat air vents	•
Temperature zone control	•

Air conditioning/refrigerator (continued)

Car air purifier	-
In-cabin PM2.5 Filter	•

Passive safety

Driver/passenger airbag	Main •/Deputy •
Front/rear side airbags	Front •/Rear-
Front/rear head airbags (curtain airbags)	Front •/Rear •
Front center airbag	•

Wheel brake

Front Brake Type	Ventilation disc
Rear Brake Type	Disc
Parking brake type	Electronic Parking
Front Tire Size	225/55 R17
Rear Tire Size	225/55 R17
Spare Tire Size	Tire repair tools

Audio/Interior Lighting

Number of speakers	• 8 speakers
Touch reading light	•

Driving functions

Navigation traffic information display	•
Lane assist	•
Lane Keeping Assist System	•
Cruise control system	• Full speed adaptive cruise
Satellite navigation system	•
Driving assistance level	•L2
Rear Cross Traffic Alert	•
Lane centering	•
Road traffic sign recognition	•
Map Brand	• Baidu
Remote Parking	•
Driver assistance systems	•DiPilot 100
Hands-off detection	•

Driving functions (continued)

Parking Assist	<ul style="list-style-type: none">•
Lane Change Assist	<ul style="list-style-type: none">•
Automatic Ramp Entry/Exit Assist	<ul style="list-style-type: none">•
Highway sections	<ul style="list-style-type: none">• Expressway section

Exterior lighting

Low beam light source	<ul style="list-style-type: none">•LED
High beam light source	<ul style="list-style-type: none">•LED
LED daytime running lights	<ul style="list-style-type: none">•
Adaptive high and low beam	<ul style="list-style-type: none">•
Automatic headlights	<ul style="list-style-type: none">•
Height-adjustable headlights	<ul style="list-style-type: none">•
Headlight Delay Off	<ul style="list-style-type: none">•

Exterior mirrors

Exterior mirror function	<ul style="list-style-type: none">• Electric adjustment;• Electric folding;• Rearview mirror heating;• Automatic folding when locked
---------------------------------	---

Appearance/anti-theft

Rim material	<ul style="list-style-type: none">• Aluminum alloy
Electric trunk	-
Electronic engine immobilizer	<ul style="list-style-type: none">•
Central locking system in the car	<ul style="list-style-type: none">•
Key Type	<ul style="list-style-type: none">• Remote key;• Bluetooth key;• NFC/RFID key
Keyless start system	<ul style="list-style-type: none">•
Keyless entry function	<ul style="list-style-type: none">• Front row
Remote start function	<ul style="list-style-type: none">•
Battery preheating	<ul style="list-style-type: none">•
Active closed grille	<ul style="list-style-type: none">•
Discharge to the outside	<ul style="list-style-type: none">•

Skylight/Glass

Sunroof Type	<ul style="list-style-type: none">• Openable panoramic sunroof
---------------------	--

Skylight/Glass (continued)

Front/rear electric windows	Front •/Rear •
One-touch window lifting function	• Full car
Window anti-pinch function	•
Car makeup mirror	• Main driver's lamp; • co-pilot's lamp
Rear wiper	-
Rain sensor wiper function	• Rainfall-sensing

Interior and exterior color

Exterior Color	Tea Crystal Ash:#878C9E; Bingpo Green:#A7B4BB; Runyu, White:#FFFFFF, Jianyao Purple:#48364F
Interior Color	Xuanwu, Grey:#B6B8B7, Black, Haoyuemi:#000000/#D1CEC5

Steering wheel/interior mirror

Steering Wheel Material	• Cortex
Steering wheel position adjustment	• Manual up and down front and rear adjustment
Multi-function steering wheel	•
Heated Steering Wheel	-
Steering wheel memory	-
Trip computer display screen	• Color
Full LCD instrument panel	•
LCD instrument size	• 8.8 inches
Interior rearview mirror function	• Manual anti-glare
Gear shifting	• Electronic gear shift
ETC Device	•

Intelligent configuration

Connected Car Services	•
OTA Updates	•
4G/5G Network	•5G

Intelligent configuration (continued)

Mobile APP remote function	<ul style="list-style-type: none">• Door control;• Vehicle start;• Charging management;• Lamp control;• Air conditioning control;• Vehicle condition inquiry/diagnosis;• Vehicle location/car search;• Owner service (find charging piles, gas stations, parking lots, etc.);• Appointment maintenance/repair
Wi-Fi hotspots	<ul style="list-style-type: none">•
Car KTV	<ul style="list-style-type: none">•

Driving Control

Driving mode switch	<ul style="list-style-type: none">• Sport;• Economy;• Standard/Comfort;• Snow
Automatic parking	<ul style="list-style-type: none">•
Hill start assist	<ul style="list-style-type: none">•
Energy recovery system	<ul style="list-style-type: none">•

Driving Hardware

Front/rear parking radar	Front •/Rear •
Driving Assistance Camera System	<ul style="list-style-type: none">• 360-degree panoramic image
Front perception camera	<ul style="list-style-type: none">• Three eyes
Number of cameras	<ul style="list-style-type: none">• 12
Number of ultrasonic radars	<ul style="list-style-type: none">• 12
Transparent chassis/540-degree imaging	<ul style="list-style-type: none">•
Millimeter wave radar quantity	<ul style="list-style-type: none">• 5
Assisted driving chip	<ul style="list-style-type: none">• NVIDIA Orin-N
Total chip computing power	<ul style="list-style-type: none">•84 TOPS
Front perception camera pixels	<ul style="list-style-type: none">•USD 1,176,471

In-car charging

Multimedia/charging port	<ul style="list-style-type: none">•USB;•Type-C
Number of USB/Type-C ports	<ul style="list-style-type: none">• 2 in the front row/2 in the back row
Mobile phone wireless charging function	<ul style="list-style-type: none">• Front row
Mobile phone wireless charging power	<ul style="list-style-type: none">•15W

"●" = Standard equipment

"□" = Not available

"○" = Optional equipment.

Note: These are Chinese market vehicles. Warranty coverage is not available outside of China.