

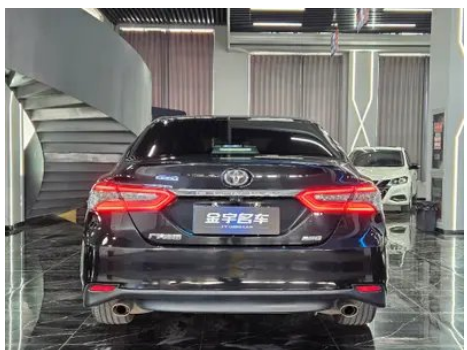
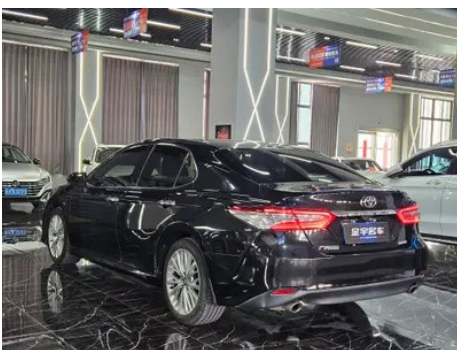
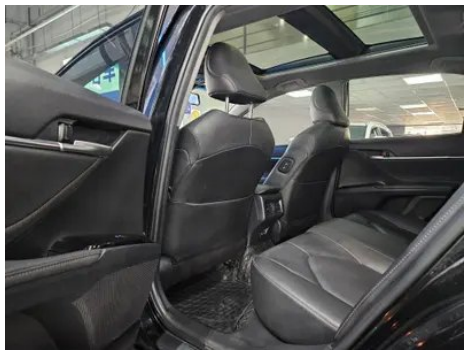
Vehicle Detail Report

Toyota Camry 2019 2.5G Luxury Edition Country VI

Basic Information

Brand	Toyota
Mileage	117,000 km
Color	Black
First Registration	2020-10-01
Transfer Count	1

Vehicle Images





Vehicle Condition

1. Spare wheel well, Soiling. 2. Driver's seat rails and frame, Signs of removal. 3. Front passenger seat rails and frame, Signs of removal. 4. Left rear quarter panel, Paint chip, Scratch, Scrape. 5. Right rear quarter panel, Paint repair, Body panel repair.

Configuration Information

Model Information

Model Name	Toyota Camry 2019 2.5G Luxury Edition Country VI
Launch Date	2019.02

Basic parameters

Vehicle Class	Mid-size car
Energy Type	Gasoline
Maximum Power (kW)	154
Maximum Torque (N·m)	250
Transmission	8-gear manual integration
Body Type	Sedan
Engine	2.5L 209 horsepower L4
Dimensions (L×W×H) (mm)	4885*1840*1455
Official 0-100 km/h Acceleration (s)	-
Top Speed (km/h)	210
Curb Weight (kg)	1585
Maximum Gross Weight (kg)	-
NEDC Combined Fuel Consumption (L/100km)	6

engine

Engine Model	A25A/A25C
Displacement (mL)	2487
Displacement (L)	2.5
Induction Type	Natural aspiration

engine (continued)

Cylinder Arrangement	L
Number of Cylinders	4
Valves per Cylinder	4
Compression Ratio	13
Valve Train	DOHC
Bore (mm)	87.5
Stroke (mm)	103.4
Maximum Power (PS)	209
Max Power Speed (rpm)	6600
Max Torque Speed (rpm)	5000
Maximum net power (kW)	154
Fuel Grade	92.
Fuel Delivery System	Mixed injection
Cylinder Head Material	Aluminum alloy
Cylinder Block Material	Aluminum alloy
Engine layout	Horizontal
Engine-specific technologies	VVT-iE

Screen/System

Central control color screen	<ul style="list-style-type: none">• Touch LCD screen
Infotainment Screen Size	<ul style="list-style-type: none">•9 inches
Bluetooth/In-car Phone	<ul style="list-style-type: none">•
Smartphone Integration/ Mirroring	<ul style="list-style-type: none">• Baidu CarLife support
Voice recognition control system	<ul style="list-style-type: none">• Multimedia system;• Navigation;• Telephone

Body

Length (mm)	4885
Width (mm)	1840
Height (mm)	1455
Wheelbase (mm)	2825
Front Track (mm)	1575
Rear Track (mm)	1585
Door Opening Type	swing door

Body (continued)

Number of Doors	4
Number of Seats	5
Fuel Tank Capacity (L)	60
Trunk volume (L)	-
Drag Coefficient (Cd)	-
Approach Angle (°)	14
Departure Angle (°)	11
Minimum Turning Radius (m)	5.8

Gearbox

Abbreviation	8-gear manual integration
Number of Gears	8
Transmission Type	Automatic Transmission with Manual Mode (AT)

Chassis steering

Drive Type	Front-engine, Front-wheel drive (FF)
Front Suspension Type	MacPherson independent suspension
Rear Suspension Type	E-type multi-link independent suspension
Power Steering Type	Electric power assistance
Vehicle structure	bearing type

Seat Configuration

Seat Material	• Genuine leather; • Faux leather
Main seat adjustment	• Front and rear adjustment; • Backrest adjustment; • Height adjustment (4-way); • Lumbar support (2-way)
Co-seat adjustment method	• Front and rear adjustment; • Backrest adjustment
Electric adjustment of driver's seat and passenger seat	Main •/Deputy •
Front passenger seat rear adjustable buttons	•
Rear seat folding	• Proportional down
Front/rear center armrest	Front •/Rear •
Rear cup holder	•

Active safety

Active safety (continued)

Anti-lock Braking System (ABS)	•
Electronic Brakeforce Distribution (EBD/CBC)	•
Brake Assist System (EBA/BAS/BA)	•
Traction Control System (ASR/TCS/TRC)	•
Electronic Stability Control (ESC/ESP/DSC)	•
Tire Pressure Monitoring System (TPMS)	• Tire pressure display
Seat Belt Reminder	• Full vehicle
ISOFIX Child Seat Anchors	•
Lane Departure Warning System (LDWS)	•
Autonomous Emergency Braking (AEB)	•
Driver Fatigue Detection	-

Air conditioning/refrigerator

Air conditioning temperature control method	• Automatic air conditioning
Rear Independent Climate Control	-
Rear seat air vents	•
Temperature zone control	•
Car air purifier	•
In-cabin PM2.5 Filter	•
Negative ion generator	•

Passive safety

Driver/passenger airbag	Main •/Deputy •
Front/rear side airbags	Front •/Rear •
Front/rear head airbags (curtain airbags)	Front •/Rear •
Knee airbag	• Driver's knee airbag

Wheel brake

Front Brake Type	Ventilation disc
Rear Brake Type	Disc

Wheel brake (continued)

Parking brake type	Electronic Parking
Front Tire Size	235/45 R18
Rear Tire Size	235/45 R18
Spare Tire Size	Not full-size

Audio/Interior Lighting

Number of speakers	• 6 speakers
---------------------------	--------------

Driving functions

Navigation traffic information display	•
Lane assist	-
Lane Keeping Assist System	-
Cruise control system	• Adaptive cruise
Satellite navigation system	•
Parking Assist	-

Exterior lighting

Low beam light source	•LED
High beam light source	•LED
LED daytime running lights	•
Adaptive high and low beam	•
Automatic headlights	•
Front fog lights	•LED
Height-adjustable headlights	•
Headlight Delay Off	-

Exterior mirrors

Exterior mirror function	• Electric adjustment; • Electric folding; • Mirror heating
---------------------------------	---

Appearance/anti-theft

Rim material	• Aluminum alloy
Electronic engine immobilizer	•
Central locking system in the car	•
Key Type	• Remote key

Appearance/anti-theft (continued)

Keyless start system	<ul style="list-style-type: none">•
Keyless entry function	<ul style="list-style-type: none">• Driving position

Skylight/Glass

Sunroof Type	<ul style="list-style-type: none">• Openable panoramic sunroof
Front/rear electric windows	Front •/Rear •
One-touch window lifting function	<ul style="list-style-type: none">• Full vehicle
Window anti-pinch function	<ul style="list-style-type: none">•
Car makeup mirror	<ul style="list-style-type: none">• Main driver's lamp;• co-pilot's lamp
Rear wiper	-
Rain sensor wiper function	<ul style="list-style-type: none">• Rainfall-sensing

Interior and exterior color

Exterior Color	Opal Silver #D0D0D0 Platinum Pearl White #DCE2E0 Tiger Eyes Brown #78504C ink crystal black #000000 Yao Dung Red #9C1F0B
Interior Color	Black:#414544; Black/Beige:#414544/#F8E9D1

Steering wheel/interior mirror

Steering Wheel Material	<ul style="list-style-type: none">• Leather
Steering wheel position adjustment	<ul style="list-style-type: none">• Manual up and down front and rear adjustment
Multi-function steering wheel	<ul style="list-style-type: none">•
Heated Steering Wheel	-
Steering wheel memory	-
Trip computer display screen	<ul style="list-style-type: none">• Color
Full LCD instrument panel	-
LCD instrument size	<ul style="list-style-type: none">• 7 inches
Interior rearview mirror function	<ul style="list-style-type: none">• Manual anti-glare
HUD Head Up Digital Display	<ul style="list-style-type: none">•

Intelligent configuration

Connected Car Services	-
-------------------------------	---

Intelligent configuration (continued)

OTA Updates	-
--------------------	---

Driving Control

Driving mode switch	• Sport; • Economy; • Standard/Comfort
Automatic parking	•
Hill start assist	•
Engine start-stop technology	•

Driving Hardware

Front/rear parking radar	Front •/Rear •
Driving Assistance Camera System	• Reversing image

In-car charging

Multimedia/charging port	•USB;•AUX
Number of USB/Type-C ports	• 1 in the front row/2 in the back row

"●" = Standard equipment

"_" = Not available

"○" = Optional equipment.

Note: These are Chinese market vehicles. Warranty coverage is not available outside of China.