

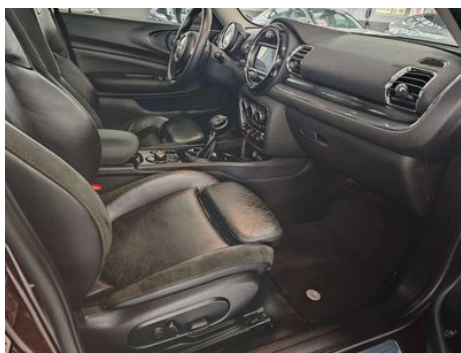
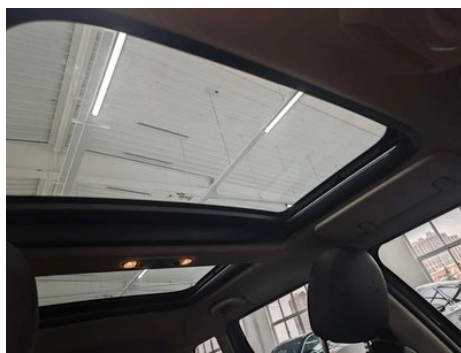
Vehicle Detail Report

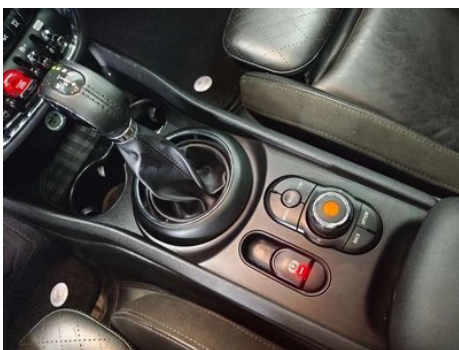
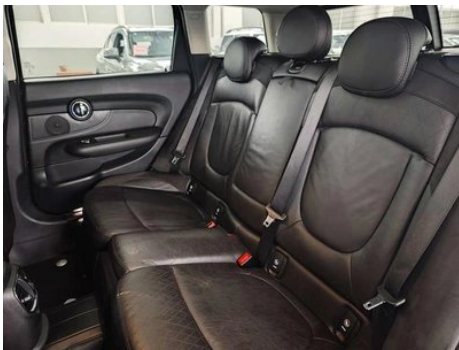
MINI CLUBMAN 2016 Restyling 1.5T COOPER Connoisseur Edition

Basic Information

Brand	MINI
Mileage	70,800 km
Color	Coffee color
First Registration	2018-03-01
Transfer Count	0

Vehicle Images







Vehicle Condition

1. Right rocker panel, Inner side deformation. 2. Inner side of left C-pillar, Scratch. 3. Inner side of right A-pillar, Deformation. 4. Driver seat rails and frame, Signs of disassembly. 5. Passenger seat rails and frame, Signs of disassembly.

Configuration Information

Model Information

Model Name	MINI Clubman 2016 Facelift 1.5T Cooper Connoisseur Edition
Launch Date	2016.04

Basic parameters

Vehicle Class	Small car
Energy Type	Gasoline
Maximum Power (kW)	100
Maximum Torque (N·m)	220
Transmission	6-speed manual integration
Body Type	Hatchback
Engine	1.5L 136 hp L3
Dimensions (L×W×H) (mm)	4263*1800*1479
Official 0-100 km/h Acceleration (s)	9.1
Top Speed (km/h)	205
Curb Weight (kg)	1446
Maximum Gross Weight (kg)	-
NEDC Combined Fuel Consumption (L/100km)	5.8

engine

Engine Model	B38A15A
Displacement (mL)	1499
Displacement (L)	1.5
Induction Type	Turbocharging

engine (continued)

Cylinder Arrangement	L
Number of Cylinders	3
Valves per Cylinder	4
Compression Ratio	11
Valve Train	DOHC
Bore (mm)	82
Stroke (mm)	94.6
Maximum Power (PS)	136
Max Power Speed (rpm)	4500-6000
Max Torque Speed (rpm)	1250-4300
Maximum net power (kW)	-
Fuel Grade	95.
Fuel Delivery System	Direct injection
Cylinder Head Material	Aluminum alloy
Cylinder Block Material	Aluminum alloy
Engine layout	Horizontal

Screen/System

Central control color screen	○
Infotainment Screen Size	○ 6.5 inches; ○ 8.8 inches
Bluetooth/In-car Phone	•

Body

Length (mm)	4263
Width (mm)	1800
Height (mm)	1479
Wheelbase (mm)	2670
Front Track (mm)	1560
Rear Track (mm)	1561
Door Opening Type	swing door
Number of Doors	6
Number of Seats	5
Fuel Tank Capacity (L)	48
Trunk volume (L)	360-1250
Drag Coefficient (Cd)	-

Gearbox

Abbreviation	6-speed manual integration
Number of Gears	6
Transmission Type	Automatic Transmission with Manual Mode (AT)

Chassis steering

Drive Type	Front-engine, Front-wheel drive (FF)
Front Suspension Type	MacPherson independent suspension
Rear Suspension Type	Multi-link independent suspension
Power Steering Type	Electric power assistance
Vehicle structure	bearing type

Seat Configuration

Seat Material	<ul style="list-style-type: none">• Leather
Main seat adjustment	<ul style="list-style-type: none">• Front and rear adjustment;• Backrest adjustment;• Height adjustment (2-way)
Co-seat adjustment method	<ul style="list-style-type: none">• Front and rear adjustment;• Backrest adjustment
Electric adjustment of driver's seat and passenger seat	Main •/Deputy •
Front seat functions	<input type="radio"/> Heating (USD 515)
Electric seat memory function	<ul style="list-style-type: none">•
Front passenger seat rear adjustable buttons	-
Rear seat folding	<ul style="list-style-type: none">• Proportional down
Front/rear center armrest	Front •/Rear •
Rear cup holder	<ul style="list-style-type: none">•

Active safety

Anti-lock Braking System (ABS)	<ul style="list-style-type: none">•
Electronic Brakeforce Distribution (EBD/CBC)	<ul style="list-style-type: none">•
Brake Assist System (EBA/BAS/BA)	<ul style="list-style-type: none">•
Traction Control System (ASR/TCS/TRC)	<ul style="list-style-type: none">•
Electronic Stability Control (ESC/ESP/DSC)	<ul style="list-style-type: none">•

Active safety (continued)

Tire Pressure Monitoring System (TPMS)	•
Seat Belt Reminder	•
ISOFIX Child Seat Anchors	•
Lane Departure Warning System (LDWS)	-
Autonomous Emergency Braking (AEB)	-
Driver Fatigue Detection	-
Emergency Call System (eCall)	○

Air conditioning/refrigerator

Air conditioning temperature control method	• Automatic air conditioning
Rear Independent Climate Control	-
Rear seat air vents	•
Temperature zone control	•
Car air purifier	-
In-cabin PM2.5 Filter	-

Passive safety

Driver/passenger airbag	Main •/Deputy •
Front/rear side airbags	Front •/Rear-
Front/rear head airbags (curtain airbags)	Front •/Rear •
Run-flat tires	•

Wheel brake

Front Brake Type	Ventilation disc
Rear Brake Type	Disc
Parking brake type	Electronic Parking
Front Tire Size	225/40 R18
Rear Tire Size	225/40 R18
Spare Tire Size	None

Audio/Interior Lighting

Speaker Brand Name	○Harman/Kardon (USD 1,176)
Number of speakers	•6-7 speakers; ○10-11 speakers

Audio/Interior Lighting (continued)

Interior ambient lighting	•
---------------------------	---

Driving functions

Navigation traffic information display	-
Lane assist	-
Lane Keeping Assist System	-
Cruise control system	• Cruise control
Satellite navigation system	○
Parking Assist	○

Exterior lighting

Low beam light source	•LED
High beam light source	•LED
LED daytime running lights	•
Adaptive high and low beam	○
Automatic headlights	•
Front fog lights	•
Height-adjustable headlights	•
Headlight Delay Off	-
Turn headlights	○

Exterior mirrors

Exterior mirror function	• Electric adjustment; • Electric folding; • Mirror memory function; • Heated mirrors; ○ Auto-dimming (USD 147)
--------------------------	---

Appearance/anti-theft

Rim material	• Aluminum alloy
Electric trunk	-
Electronic engine immobilizer	•
Central locking system in the car	•
Key Type	• Remote key
Keyless start system	•
Keyless entry function	○

Appearance/anti-theft (continued)

Roof rack	○
-----------	---

Skylight/Glass

Sunroof Type	• Panoramic sunroof
Front/rear electric windows	Front •/Rear •
One-touch window lifting function	• Full car
Window anti-pinch function	•
Car makeup mirror	•
Rear wiper	•
Rain sensor wiper function	•

Interior and exterior color

Exterior Color	Digital blue:#4F8ABE; Burgundy red:#4F0720; Pepper white:#ECE0C1; Gold and stone blue:#000335; Flaming red:#CF181F; Streamer silver:#8F8F85; Deep sea blue:#152C60; British green:#003C1A; Moon gray:#5C5E5F; Midnight black:#020506
Interior Color	Carbon Black:#000000; Black/Magenta:#000000/#3D0016; Black/Indigo:#000000/#38446A; Carbon Black/Star Grey:#000000/#A59B91

Steering wheel/interior mirror

Steering Wheel Material	• Cortex
Steering wheel position adjustment	• Manual up and down front and rear adjustment
Multi-function steering wheel	•
Heated Steering Wheel	-
Steering wheel memory	-
Trip computer display screen	•
Full LCD instrument panel	-
Interior rearview mirror function	• Automatic anti-glare
HUD Head Up Digital Display	○

Intelligent configuration

Connected Car Services	-
OTA Updates	-

Driving Control

Automatic parking	-
Hill start assist	•
Variable suspension function	○ Suspension hardness adjustment (USD 735)
Engine start-stop technology	•

Driving Hardware

Front/rear parking radar	Front ○/Rear •
Driving Assistance Camera System	• Reversing image

In-car charging

Multimedia/charging port	•USB;•AUX
---------------------------------	-----------

"●" = Standard equipment

"-" = Not available

"○" = Optional equipment.

Note: These are Chinese market vehicles. Warranty coverage is not available outside of China.