

Vehicle Detail Report

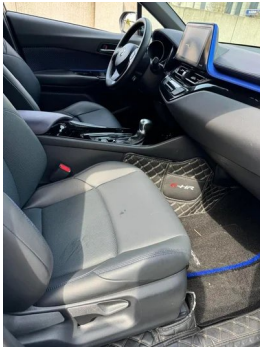
Toyota C-HR 2020 2.0L Leading Edition

Basic Information

Brand	Toyota
Mileage	87,000 km
Color	White
First Registration	2020-07-01
Transfer Count	0

Vehicle Images





Vehicle Condition

1. Deformation.

Configuration Information

Model Information

Model Name	Toyota C-HR 2020 2.0L Leading Edition
Launch Date	2019.11

Basic parameters

Vehicle Class	Small SUV
Energy Type	Gasoline
Maximum Power (kW)	126
Maximum Torque (N·m)	203
Transmission	CVT continuously variable (simulating 10 gears)
Body Type	SUV
Engine	2.0L 171 horsepower L4
Dimensions (L×W×H) (mm)	4405*1795*1565

Basic parameters (continued)

Official 0-100 km/h Acceleration (s)	-
Top Speed (km/h)	185
Curb Weight (kg)	1505
Maximum Gross Weight (kg)	-
NEDC Combined Fuel Consumption (L/100km)	5.7

engine

Engine Model	M20C
Displacement (mL)	1987
Displacement (L)	2.0
Induction Type	Natural aspiration
Cylinder Arrangement	L
Number of Cylinders	4
Valves per Cylinder	4
Compression Ratio	13
Valve Train	DOHC
Bore (mm)	80.5
Stroke (mm)	97.6
Maximum Power (PS)	171
Max Power Speed (rpm)	6600
Max Torque Speed (rpm)	4400-4800
Maximum net power (kW)	126
Fuel Grade	92.
Fuel Delivery System	Mixed injection
Cylinder Head Material	Aluminum alloy
Cylinder Block Material	Aluminum alloy
Engine layout	Horizontal

Screen/System

Central control color screen	<ul style="list-style-type: none">• Touch LCD screen
Infotainment Screen Size	<ul style="list-style-type: none">•9 inches
Bluetooth/In-car Phone	<ul style="list-style-type: none">•
Smartphone Integration/Mirroring	<ul style="list-style-type: none">• Baidu CarLife support

Screen/System (continued)

Voice recognition control system	<ul style="list-style-type: none">• Multimedia system;• Navigation;• Telephone
---	--

Body

Length (mm)	4405
Width (mm)	1795
Height (mm)	1565
Wheelbase (mm)	2640
Front Track (mm)	1550
Rear Track (mm)	1550
Door Opening Type	-
Number of Doors	5
Number of Seats	5
Fuel Tank Capacity (L)	50
Trunk volume (L)	-
Drag Coefficient (Cd)	-

Gearbox

Abbreviation	CVT continuously variable (simulating 10 gears)
Number of Gears	10
Transmission Type	Continuously Variable Transmission (CVT)

Chassis steering

Drive Type	Front-engine, Front-wheel drive (FF)
Front Suspension Type	MacPherson independent suspension
Rear Suspension Type	E-type multi-link independent suspension
Power Steering Type	Electric power assistance
Vehicle structure	bearing type

Seat Configuration

Seat Material	<ul style="list-style-type: none">• Imitation leather
Main seat adjustment	<ul style="list-style-type: none">• Front and rear adjustment;• Backrest adjustment;• Height adjustment (4-way);• Lumbar support (2-way)
Co-seat adjustment method	<ul style="list-style-type: none">• Front and rear adjustment;• Backrest adjustment;• Height adjustment (2-way)

Seat Configuration (continued)

Electric adjustment of driver's seat and passenger seat	Main/Deputy-
Front passenger seat rear adjustable buttons	-
Rear seat folding	• Proportional down
Front/rear center armrest	Front •/Rear-
Rear cup holder	-

Active safety

Anti-lock Braking System (ABS)	•
Electronic Brakeforce Distribution (EBD/CBC)	•
Brake Assist System (EBA/BAS/BA)	•
Traction Control System (ASR/TCS/TRC)	•
Electronic Stability Control (ESC/ESP/DSC)	•
Tire Pressure Monitoring System (TPMS)	• Tire pressure alarm
Seat Belt Reminder	• Full vehicle
ISOFIX Child Seat Anchors	•
Lane Departure Warning System (LDWS)	•
Autonomous Emergency Braking (AEB)	•
Driver Fatigue Detection	-

Air conditioning/refrigerator

Air conditioning temperature control method	• Manual air conditioning
Rear Independent Climate Control	-
Rear seat air vents	-
Temperature zone control	-
Car air purifier	-
In-cabin PM2.5 Filter	•

Passive safety

Driver/passenger airbag	Main •/Deputy •
--------------------------------	-----------------

Passive safety (continued)

Front/rear side airbags	Front •/Rear •
Front/rear head airbags (curtain airbags)	Front •/Rear •
Knee airbag	• Driver's knee airbag
Passenger seat cushion airbag	•

Wheel brake

Front Brake Type	Ventilation disc
Rear Brake Type	Disc
Parking brake type	Electronic Parking
Front Tire Size	215/60 R17
Rear Tire Size	215/60 R17
Spare Tire Size	Not full-size

Audio/Interior Lighting

Number of speakers	• 6 speakers
---------------------------	--------------

Driving functions

Navigation traffic information display	•
Lane assist	-
Lane Keeping Assist System	-
Cruise control system	• Adaptive cruise
Satellite navigation system	•
Parking Assist	-

Exterior lighting

Low beam light source	• Halogen
High beam light source	• Halogen
LED daytime running lights	•
Adaptive high and low beam	•
Automatic headlights	•
Front fog lights	• Halogen
Height-adjustable headlights	•
Headlight Delay Off	-

Exterior mirrors

Exterior mirrors (continued)

Exterior mirror function	<ul style="list-style-type: none">• Electric adjustment
---------------------------------	---

Appearance/anti-theft

Rim material	<ul style="list-style-type: none">• Aluminum alloy
Electric trunk	-
Electronic engine immobilizer	<ul style="list-style-type: none">•
Central locking system in the car	<ul style="list-style-type: none">•
Key Type	<ul style="list-style-type: none">• Remote key
Keyless start system	<ul style="list-style-type: none">•
Keyless entry function	<ul style="list-style-type: none">• Front row

Skylight/Glass

Sunroof Type	<ul style="list-style-type: none">• Electric sunroof
Front/rear electric windows	Front •/Rear •
One-touch window lifting function	<ul style="list-style-type: none">• Full vehicle
Window anti-pinch function	<ul style="list-style-type: none">•
Car makeup mirror	<ul style="list-style-type: none">• Main driving position;• First officer
Rear wiper	<ul style="list-style-type: none">•

Interior and exterior color

Exterior Color	Black Pearl White #000000 #DDE2E0 White Jasper Blue #FFFFFF #00AFCE Pearl White #DDE2E0 dazzle crystal black #030303 Jasper Blue #00AFCE Lemon yellow #EBDA68 Opal Silver #D0D0D0 Coral red #820305 Black Lemon yellow #000000 #EBDA68 Black Coral red #000000 #820305
Interior Color	Black Blue #414544 #7B86BC Black Beige #414544 #F8E9D1

Steering wheel/interior mirror

Steering Wheel Material	<ul style="list-style-type: none">• Plastic
Steering wheel position adjustment	<ul style="list-style-type: none">• Manual up and down front and rear adjustment
Multi-function steering wheel	<ul style="list-style-type: none">•
Heated Steering Wheel	-

Steering wheel/interior mirror (continued)

Steering wheel memory	-
Trip computer display screen	• Color
Full LCD instrument panel	-
LCD instrument size	• 4.2 inches
Interior rearview mirror function	• Manual anti-glare

Intelligent configuration

Connected Car Services	-
OTA Updates	-

Driving Control

Automatic parking	•
Hill start assist	•
Engine start-stop technology	•

Driving Hardware

Front/rear parking radar	-
Driving Assistance Camera System	• Reversing image

In-car charging

Multimedia/charging port	•USB;•AUX
Number of USB/Type-C ports	• 1 in the front row

"●" = Standard equipment

"_" = Not available

"○" = Optional equipment.

Note: These are Chinese market vehicles. Warranty coverage is not available outside of China.