

# Vehicle Detail Report

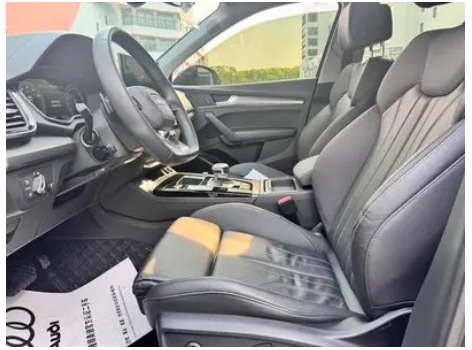
## Audi Q5L 2022 45T Deluxe Dynamic

### Basic Information

Brand	Audi
Mileage	33,000 km
Color	Black
First Registration	2023-06-01
Transfer Count	0

### Vehicle Images







## Vehicle Condition

1. Driver's seat rails and frame, Signs of removal. 2. Front passenger seat rails and frame, Signs of removal.

## Configuration Information

### Model Information

<b>Model Name</b>	Audi Q5L 2022 45T Deluxe Dynamic
<b>Launch Date</b>	2021.10

### Basic parameters

<b>Vehicle Class</b>	Mid-size SUV
<b>Energy Type</b>	Gasoline
<b>Maximum Power (kW)</b>	185
<b>Maximum Torque (N·m)</b>	370
<b>Transmission</b>	7-speed wet dual-clutch
<b>Body Type</b>	SUV
<b>Engine</b>	2.0L 252 hp L4
<b>Dimensions (L×W×H) (mm)</b>	4770*1893*1667
<b>Official 0-100 km/h Acceleration (s)</b>	6.9
<b>Top Speed (km/h)</b>	230
<b>Curb Weight (kg)</b>	1875
<b>Maximum Gross Weight (kg)</b>	2355
<b>NEDC Combined Fuel Consumption (L/100km)</b>	7.5
<b>WLTP Combined Fuel Consumption (L/100km)</b>	7.9

### engine

<b>Engine Model</b>	DKW
<b>Displacement (mL)</b>	1984
<b>Displacement (L)</b>	2.0
<b>Induction Type</b>	Turbocharging

## engine (continued)

<b>Cylinder Arrangement</b>	L
<b>Number of Cylinders</b>	4
<b>Valves per Cylinder</b>	4
<b>Valve Train</b>	DOHC
<b>Maximum Power (PS)</b>	252
<b>Max Power Speed (rpm)</b>	5000-6000
<b>Max Torque Speed (rpm)</b>	1600-4300
<b>Maximum net power (kW)</b>	185
<b>Fuel Grade</b>	95.
<b>Fuel Delivery System</b>	Direct injection
<b>Cylinder Head Material</b>	Aluminum alloy
<b>Cylinder Block Material</b>	Cast iron
<b>Engine layout</b>	Longitudinal

## Screen/System

<b>Central control color screen</b>	<ul style="list-style-type: none"><li>• Touch LCD screen</li></ul>
<b>Infotainment Screen Size</b>	<ul style="list-style-type: none"><li>• 10.1 inches</li></ul>
<b>Bluetooth/In-car Phone</b>	<ul style="list-style-type: none"><li>•</li></ul>
<b>Smartphone Integration/ Mirroring</b>	<ul style="list-style-type: none"><li>• Apple CarPlay support</li></ul>
<b>Voice recognition control system</b>	<ul style="list-style-type: none"><li>• Multimedia system;</li><li>• Navigation;</li><li>• Telephone</li></ul>
<b>Voice wake-up recognition by region</b>	<ul style="list-style-type: none"><li>• Single area</li></ul>
<b>In-vehicle intelligent system</b>	<ul style="list-style-type: none"><li>• Audi Connect</li></ul>
<b>Touch screen vibration feedback</b>	<ul style="list-style-type: none"><li>•</li></ul>
<b>App Store</b>	<ul style="list-style-type: none"><li>•</li></ul>

## Body

<b>Length (mm)</b>	4770
<b>Width (mm)</b>	1893
<b>Height (mm)</b>	1667
<b>Wheelbase (mm)</b>	2907
<b>Front Track (mm)</b>	1616
<b>Rear Track (mm)</b>	1610

## Body (continued)

<b>Ground Clearance (Fully Loaded) (mm)</b>	166
<b>Door Opening Type</b>	swing door
<b>Number of Doors</b>	5
<b>Number of Seats</b>	5
<b>Fuel Tank Capacity (L)</b>	73
<b>Trunk volume (L)</b>	550
<b>Drag Coefficient (Cd)</b>	-
<b>Approach Angle (°)</b>	21
<b>Departure Angle (°)</b>	23
<b>Minimum Turning Radius (m)</b>	5.9

## Gearbox

<b>Abbreviation</b>	7-speed wet dual-clutch
<b>Number of Gears</b>	7
<b>Transmission Type</b>	Wet Dual-Clutch Transmission (DCT)

## Chassis steering

<b>Drive Type</b>	Front-engine, All-wheel drive (F-AWD)
<b>Four-wheel drive</b>	Timely four-wheel drive
<b>Central differential structure</b>	Multi-plate clutch
<b>Front Suspension Type</b>	Five-link independent suspension
<b>Rear Suspension Type</b>	Five-link independent suspension
<b>Power Steering Type</b>	Electric power assistance
<b>Vehicle structure</b>	bearing type

## Seat Configuration

<b>Seat Material</b>	<ul style="list-style-type: none"><li>• Imitation leather</li></ul>
<b>Main seat adjustment</b>	<ul style="list-style-type: none"><li>• Front and rear adjustment;</li><li>• Backrest adjustment;</li><li>• Height adjustment (4-way);</li><li>• Leg rest adjustment;</li><li>• Lumbar support (4-way)</li></ul>
<b>Co-seat adjustment method</b>	<ul style="list-style-type: none"><li>• Front and rear adjustment;</li><li>• Backrest adjustment;</li><li>• Height adjustment (4-way);</li><li>• Leg rest adjustment;</li><li>• Lumbar support (4-way)</li></ul>

## Seat Configuration (continued)

<b>Electric adjustment of driver's seat and passenger seat</b>	Main •/Deputy •
<b>Front seat functions</b>	• Heating; ○ Ventilation (USD 1,456)
<b>Electric seat memory function</b>	• Driving position
<b>Front passenger seat rear adjustable buttons</b>	-
<b>Rear seat folding</b>	• Proportional down
<b>Front/rear center armrest</b>	Front •/Rear •
<b>Rear cup holder</b>	•
<b>Second row seat functions</b>	○ Heating (USD 471)
<b>Sports style seats</b>	•
<b>Heated/cooled cup holder</b>	○ Heating (USD 235)

## Active safety

<b>Anti-lock Braking System (ABS)</b>	•
<b>Electronic Brakeforce Distribution (EBD/CBC)</b>	•
<b>Brake Assist System (EBA/BAS/BA)</b>	•
<b>Traction Control System (ASR/TCS/TRC)</b>	•
<b>Electronic Stability Control (ESC/ESP/DSC)</b>	•
<b>Tire Pressure Monitoring System (TPMS)</b>	• Tire pressure alarm
<b>Seat Belt Reminder</b>	• Front row
<b>ISOFIX Child Seat Anchors</b>	•
<b>Lane Departure Warning System (LDWS)</b>	•
<b>Autonomous Emergency Braking (AEB)</b>	•
<b>Driver Fatigue Detection</b>	-
<b>Emergency Call System (eCall)</b>	•

## Air conditioning/refrigerator

## Air conditioning/refrigerator (continued)

<b>Air conditioning temperature control method</b>	• Automatic air conditioning
<b>Rear Independent Climate Control</b>	•
<b>Rear seat air vents</b>	•
<b>Temperature zone control</b>	•
<b>Car air purifier</b>	-
<b>In-cabin PM2.5 Filter</b>	-

## Passive safety

<b>Driver/passenger airbag</b>	Main •/Deputy •
<b>Front/rear side airbags</b>	Front/rear rear side airbag (USD 235)
<b>Front/rear head airbags (curtain airbags)</b>	Front •/Rear •

## Wheel brake

<b>Front Brake Type</b>	Ventilation disc
<b>Rear Brake Type</b>	Ventilation disc
<b>Parking brake type</b>	Electronic Parking
<b>Front Tire Size</b>	255/45 R20
<b>Rear Tire Size</b>	255/45 R20
<b>Spare Tire Size</b>	None

## Audio/Interior Lighting

<b>Speaker Brand Name</b>	•Bang & Olufsen
<b>Number of speakers</b>	• 19 Horn
<b>Interior ambient lighting</b>	• 30 colors
<b>Touch reading light</b>	•

## Driving functions

<b>Navigation traffic information display</b>	•
<b>Lane assist</b>	○(USD 1,029)
<b>Lane Keeping Assist System</b>	○(USD 647)
<b>Cruise control system</b>	• Constant speed cruise; ○ Adaptive cruise (USD 2,382)
<b>Satellite navigation system</b>	•
<b>Rear Cross Traffic Alert</b>	○(USD 176)

## Driving functions (continued)

<b>Parking Assist</b>	<ul style="list-style-type: none"><li>•</li></ul>
-----------------------	---

## Exterior lighting

<b>Low beam light source</b>	<ul style="list-style-type: none"><li>• LED</li></ul>
<b>High beam light source</b>	<ul style="list-style-type: none"><li>• LED</li></ul>
<b>LED daytime running lights</b>	<ul style="list-style-type: none"><li>•</li></ul>
<b>Adaptive high and low beam</b>	<ul style="list-style-type: none"><li>○ (USD 294)</li></ul>
<b>Automatic headlights</b>	<ul style="list-style-type: none"><li>•</li></ul>
<b>Height-adjustable headlights</b>	<ul style="list-style-type: none"><li>•</li></ul>
<b>Headlight Delay Off</b>	<ul style="list-style-type: none"><li>•</li></ul>
<b>Lighting features</b>	<ul style="list-style-type: none"><li>○ Matrix (USD 1,176)</li></ul>
<b>Turn headlights</b>	<ul style="list-style-type: none"><li>○</li></ul>
<b>Headlight rain and fog mode</b>	<ul style="list-style-type: none"><li>•</li></ul>
<b>Headlight cleaning device</b>	<ul style="list-style-type: none"><li>○ (USD 1,176)</li></ul>

## Exterior mirrors

<b>Exterior mirror function</b>	<ul style="list-style-type: none"><li>• Electric adjustment;</li><li>• Electric folding;</li><li>• Rearview mirror memory;</li><li>• Rearview mirror heating;</li><li>• Automatic downturning when reversing;</li><li>• Automatic folding when locked;</li><li>• Automatic anti-glare</li></ul>
---------------------------------	---

## Appearance/anti-theft

<b>Rim material</b>	<ul style="list-style-type: none"><li>• Aluminum alloy</li></ul>
<b>Electric trunk</b>	<ul style="list-style-type: none"><li>•</li></ul>
<b>Electronic engine immobilizer</b>	<ul style="list-style-type: none"><li>•</li></ul>
<b>Central locking system in the car</b>	<ul style="list-style-type: none"><li>•</li></ul>
<b>Key Type</b>	<ul style="list-style-type: none"><li>• Remote key</li></ul>
<b>Keyless start system</b>	<ul style="list-style-type: none"><li>•</li></ul>
<b>Keyless entry function</b>	<ul style="list-style-type: none"><li>• Full vehicle</li></ul>
<b>Appearance Kit</b>	<ul style="list-style-type: none"><li>• Sports style</li></ul>
<b>Hands-free Trunk</b>	<ul style="list-style-type: none"><li>•</li></ul>
<b>Electric trunk position memory</b>	<ul style="list-style-type: none"><li>•</li></ul>
<b>Roof rack</b>	<ul style="list-style-type: none"><li>•</li></ul>

## Appearance/anti-theft (continued)

<b>Active closed grille</b>	•
<b>Side pedals</b>	○ Fixed (USD 515)

## Skylight/Glass

<b>Sunroof Type</b>	• Openable panoramic sunroof
<b>Front/rear electric windows</b>	Front •/Rear •
<b>One-touch window lifting function</b>	• Full vehicle
<b>Window anti-pinch function</b>	•
<b>Car makeup mirror</b>	• Main driver's lamp; • co-pilot's lamp
<b>Rear wiper</b>	•
<b>Rain sensor wiper function</b>	• Rainfall-sensing
<b>Rear side window sunshades</b>	○ Manual (USD 515)

## Interior and exterior color

<b>Exterior Color</b>	ibis white #F7F6F1 Legendary Black #101010 Matador Red #69091E Rhythmic Blue #143250 Sohu Brown #50463C Tanggula White #E9E9E9 Sky Cloud Gray #646464 Interstellar Blue #053250
<b>Interior Color</b>	Black aras red #000000 #821E22 Black #000000 Black OKapi Brown #000000 #966446 Black Rock lime #000000 #BCBCBC

## Steering wheel/interior mirror

<b>Steering Wheel Material</b>	• Leather
<b>Steering wheel position adjustment</b>	• Manual up and down front and rear adjustment
<b>Multi-function steering wheel</b>	•
<b>Heated Steering Wheel</b>	○(USD 147)
<b>Steering wheel memory</b>	-
<b>Trip computer display screen</b>	• Color
<b>Full LCD instrument panel</b>	•
<b>LCD instrument size</b>	• 12.3 inches

## Steering wheel/interior mirror (continued)

<b>Interior rearview mirror function</b>	• Automatic anti-glare
<b>Gear shifting</b>	• Electronic gear shift
<b>HUD Head Up Digital Display</b>	○(USD 2,632)
<b>Steering Wheel Shift Paddles</b>	•

## Intelligent configuration

<b>Connected Car Services</b>	•
<b>OTA Updates</b>	-
<b>4G/5G Network</b>	•4G
<b>Mobile APP remote function</b>	•
<b>Wi-Fi hotspots</b>	•

## Driving Control

<b>Driving mode switch</b>	•Sport; •Economy; •Standard/Comfort; •Off-Road
<b>Automatic parking</b>	•
<b>Steep slope descent</b>	•
<b>Hill start assist</b>	•
<b>Engine start-stop technology</b>	•

## Driving Hardware

<b>Front/rear parking radar</b>	Front •/Rear •
<b>Driving Assistance Camera System</b>	• Reversing image; ○ 360-degree panoramic image (USD 544)
<b>Front perception camera</b>	• Monocular
<b>Number of cameras</b>	• 2; ○ 5
<b>Number of ultrasonic radars</b>	• 12

## In-car charging

<b>Multimedia/charging port</b>	•USB;•Type-C
<b>Number of USB/Type-C ports</b>	• 2 in the front row/2 in the back row
<b>Luggage compartment 12V power socket</b>	•

---

"●" = Standard equipment

"□" = Not available

"○" = Optional equipment.

Note: These are Chinese market vehicles. Warranty coverage is not available outside of China.