

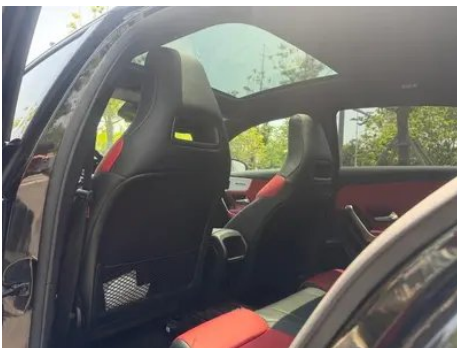
Vehicle Detail Report

Mercedes-Benz Mercedes-AMG A-Class 2022 AMG A 35 4MATIC

Basic Information

Brand	Mercedes-Benz
Mileage	33,000 km
Color	Black
First Registration	2022-07-01
Transfer Count	0

Vehicle Images





Vehicle Condition

1. Left rear quarter panel, Paint repair, Body panel repair.

Configuration Information

Model Information

Model Name	Mercedes-Benz Mercedes-AMG A-Class 2022 AMG A 35 4MATIC
Launch Date	2021.11

Basic parameters

Vehicle Class	compact car
Energy Type	Gasoline
Maximum Power (kW)	225
Maximum Torque (N·m)	400

Basic parameters (continued)

Transmission	7-speed wet dual-clutch
Body Type	Hatchback
Engine	2.0T 306 horsepower L4
Dimensions (L×W×H) (mm)	4439*1796*1403
Official 0-100 km/h Acceleration (s)	4.7
Top Speed (km/h)	250
Curb Weight (kg)	1605
Maximum Gross Weight (kg)	2070
WLTP Combined Fuel Consumption (L/100km)	8.31

engine

Engine Model	260 920
Displacement (mL)	1991
Displacement (L)	2.0
Induction Type	Turbocharging
Cylinder Arrangement	L
Number of Cylinders	4
Valves per Cylinder	4
Valve Train	DOHC
Maximum Power (PS)	306
Max Power Speed (rpm)	5800
Max Torque Speed (rpm)	3000-4000
Maximum net power (kW)	225
Fuel Grade	95.
Fuel Delivery System	Direct injection
Cylinder Head Material	Aluminum alloy
Cylinder Block Material	Aluminum alloy
Engine layout	Horizontal

Screen/System

Central control color screen	<ul style="list-style-type: none">• Touch LCD screen
Infotainment Screen Size	<ul style="list-style-type: none">• 10.25 inches
Bluetooth/In-car Phone	<ul style="list-style-type: none">•

Screen/System (continued)

Smartphone Integration/ Mirroring	• Apple CarPlay support; • Baidu CarLife support
Voice recognition control system	• Multimedia system; • Navigation; • Telephone; • Air conditioning; • Sunroof
In-vehicle intelligent system	•MBUX

Body

Length (mm)	4439
Width (mm)	1796
Height (mm)	1403
Wheelbase (mm)	2729
Front Track (mm)	-
Rear Track (mm)	-
Door Opening Type	swing door
Number of Doors	5
Number of Seats	5
Trunk volume (L)	-
Drag Coefficient (Cd)	-
Approach Angle (°)	12
Departure Angle (°)	16.5

Gearbox

Abbreviation	7-speed wet dual-clutch
Number of Gears	7
Transmission Type	Wet Dual-Clutch Transmission (DCT)

Chassis steering

Drive Type	Front-engine, All-wheel drive (F-AWD)
Four-wheel drive	Timely four-wheel drive
Central differential structure	Multi-plate clutch
Front Suspension Type	MacPherson independent suspension
Rear Suspension Type	Multi-link independent suspension
Power Steering Type	Electric power assistance
Vehicle structure	bearing type

Seat Configuration

Seat Configuration (continued)

Seat Material	• Leather
Main seat adjustment	• Front and rear adjustment; • Backrest adjustment; • Height adjustment (4-way); • Leg rest adjustment; • Lumbar support (4-way)
Co-seat adjustment method	• Front and rear adjustment; • Backrest adjustment; • Height adjustment (4-way); • Leg rest adjustment; • Lumbar support (4-way)
Electric adjustment of driver's seat and passenger seat	Main •/Deputy •
Front seat functions	• Heating
Electric seat memory function	• driving position; • co-pilot position
Front passenger seat rear adjustable buttons	-
Rear seat folding	• Proportional down
Front/rear center armrest	Front •/Rear •
Rear cup holder	•

Active safety

Anti-lock Braking System (ABS)	•
Electronic Brakeforce Distribution (EBD/CBC)	•
Brake Assist System (EBA/BAS/BA)	•
Traction Control System (ASR/TCS/TRC)	•
Electronic Stability Control (ESC/ESP/DSC)	•
Tire Pressure Monitoring System (TPMS)	• Tire pressure display
Seat Belt Reminder	• Front row
ISOFIX Child Seat Anchors	•
Lane Departure Warning System (LDWS)	○
Autonomous Emergency Braking (AEB)	•
Driver Fatigue Detection	•

Active safety (continued)

Forward Collision Warning (FCW)	•
Emergency Call System (eCall)	•
Built-in Dashcam	○

Air conditioning/refrigerator

Air conditioning temperature control method	• Automatic air conditioning
Rear Independent Climate Control	-
Rear seat air vents	-
Temperature zone control	-
Car air purifier	-
In-cabin PM2.5 Filter	-

Passive safety

Driver/passenger airbag	Main •/Deputy •
Front/rear side airbags	Front/rear rear side airbag (USD 500)
Front/rear head airbags (curtain airbags)	Front •/Rear •
Passive pedestrian protection	•

Wheel brake

Front Brake Type	Ventilation disc
Rear Brake Type	Ventilation disc
Parking brake type	Electronic Parking
Front Tire Size	235/35 R19
Rear Tire Size	235/35 R19
Spare Tire Size	None

Audio/Interior Lighting

Speaker Brand Name	○ Voice of Burmester Berlin (USD 838)
Number of speakers	○ 13 horn; • 8-9 horn
Interior ambient lighting	• 64 colors

Driving functions

Navigation traffic information display	•
---	---

Driving functions (continued)

Lane assist	○
Lane Keeping Assist System	○
Cruise control system	• Cruise control; ○ Full speed adaptive cruise
Satellite navigation system	•
Driving assistance level	○L2
Lane centering	○
Map Brand	• Gaud
AR real-time navigation	○(USD 603)
Parking Assist	•

Exterior lighting

Low beam light source	•LED
High beam light source	•LED
LED daytime running lights	•
Adaptive high and low beam	•
Automatic headlights	•
Height-adjustable headlights	•
Headlight Delay Off	•
Lighting features	• MULTIBEAM LED headlights
Turn headlights	•

Exterior mirrors

Exterior mirror function	• Electric adjustment; • Electric folding; • Rearview mirror memory; • Rearview mirror heating; • Automatic downturn when reversing; • Automatic folding when locked; • Automatic anti-glare
---------------------------------	--

Appearance/anti-theft

Rim material	• Aluminum alloy
Electric trunk	-
Electronic engine immobilizer	•
Central locking system in the car	•

Appearance/anti-theft (continued)

Key Type	<ul style="list-style-type: none">• Remote key
Keyless start system	<ul style="list-style-type: none">•
Keyless entry function	<ul style="list-style-type: none">• Full vehicle
Appearance Kit	<ul style="list-style-type: none">• Sports style
Remote start function	<ul style="list-style-type: none">•

Skylight/Glass

Sunroof Type	<ul style="list-style-type: none">• Openable panoramic sunroof
Front/rear electric windows	Front •/Rear •
One-touch window lifting function	<ul style="list-style-type: none">• Full vehicle
Window anti-pinch function	<ul style="list-style-type: none">•
Car makeup mirror	<ul style="list-style-type: none">• Main driver's lamp;• co-pilot's lamp
Rear wiper	<ul style="list-style-type: none">•
Rain sensor wiper function	<ul style="list-style-type: none">• Rainfall-sensing
Rear side privacy glass	<ul style="list-style-type: none">•

Interior and exterior color

Exterior Color	Iridium Silver #B9B9B9 mountain ash #5C5951 Matte Mountain Grey #646460 Chi Xia Huang #D8AA34 dimensional white #DEDEDE Arctic White #FFFFFF Hao Sha Yin #96969B Lava Red #68211F dark night #090605 Cosmic Black #110C0A
Interior Color	Black Classic red #000000 #9B1C29 Black Pearlescent Titanium Grey #000000 #5E5F61

Steering wheel/interior mirror

Steering Wheel Material	<ul style="list-style-type: none">• Leather
Steering wheel position adjustment	<ul style="list-style-type: none">• Manual up and down front and rear adjustment
Multi-function steering wheel	<ul style="list-style-type: none">•
Heated Steering Wheel	-
Steering wheel memory	-
Trip computer display screen	<ul style="list-style-type: none">• Color

Steering wheel/interior mirror (continued)

Full LCD instrument panel	•
LCD instrument size	• 10.25 inches
Interior rearview mirror function	• Automatic anti-glare
Gear shifting	• Electronic gear shift
HUD Head Up Digital Display	○(USD 1,324)
ETC Device	○(USD 441)
Steering Wheel Shift Paddles	•

Intelligent configuration

Connected Car Services	•
OTA Updates	•
4G/5G Network	•4G
Mobile APP remote function	• Door control; • Vehicle start; • Vehicle status check/diagnostics; • Vehicle location / find my car

Driving Control

Driving mode switch	• Sport; • Standard/Comfort; • Customize/Personalize
Automatic parking	•
Hill start assist	•
Variable steering ratio	•
Engine start-stop technology	•

Driving Hardware

Front/rear parking radar	Front •/Rear •
Driving Assistance Camera System	• Rearview camera; ○ 360-degree panoramic view camera (USD 882)

In-car charging

Multimedia/charging port	•Type-C
Number of USB/Type-C ports	• 2 in the First row/1 in the 2nd-row
Mobile phone wireless charging function	○ Front row (USD 294)

"●" = Standard equipment

"□" = Not available

"○" = Optional equipment.

Note: These are Chinese market vehicles. Warranty coverage is not available outside of China.